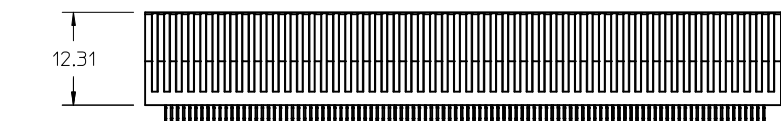


2 BAY EDGE LINE

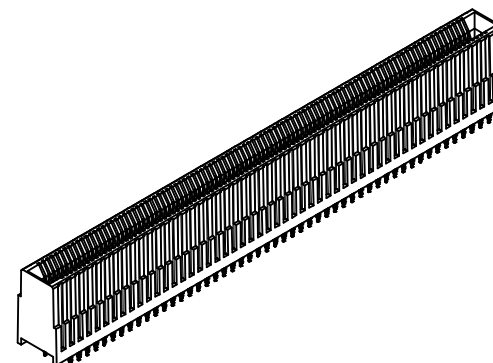
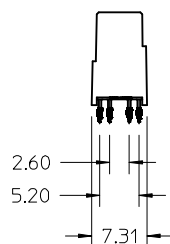


1 BAY EDGE LINE



LAST CIRCUIT

FIRST CIRCUIT

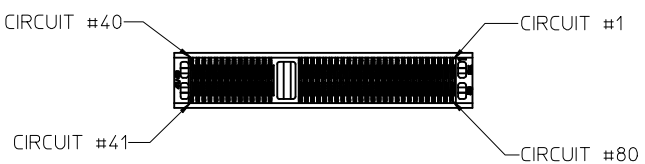
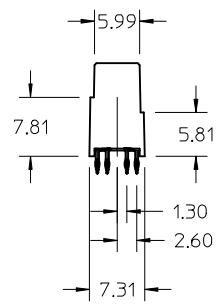
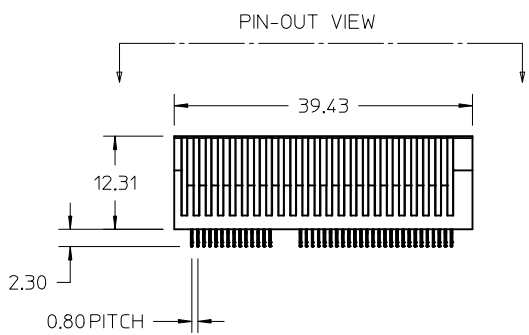
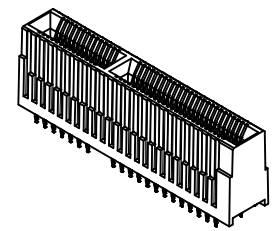
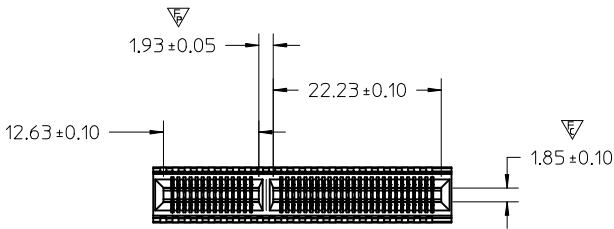


PART NUMBER	VERSION	BAY 1/BAY 2	TOTAL CIRCUITS	DIM A	SALES DRAWING (SEE NOTE 9)
76691-2278	2 BAY	143/132	278	118.63	RSD-76691-2278
76691-1200	1 BAY	200	200	84.20	RSD-76691-1200
76691-2108	2 BAY	86/22	108	50.63	RSD-76691-2108
76691-3108	2 BAY	86/22	108	50.63	RSD-76691-3108
76691-2080	2 BAY	52/28	80	39.43	RSD-76691-111
76691-9046*	1 BAY	46	46	22.60	RSD-76691-109
76691-1046	1 BAY	46	46	22.60	RSD-76691-107

NOTES:

- MATERIAL:
HOUSING - GLASS FILLED THERMOPLASTIC, 94-VO, BLACK
TERMINALS - COPPER ALLOY
- FINISH:
CONTACT AREA: 0.76 MICROMETER MINIMUM HARD GOLD OVER 3.80 MICROMETER NICKEL
COMPLIANT AREA: 0.76-1.52 MICROMETER TIN OVER 1.27 MICROMETER NICKEL
- REFER TO PS-75594-999 PRODUCT SPECIFICATION FOR ALL ELECTRICAL, MECHANICAL AND ENVIROMENTAL SPECIFICATIONS.
- REFER TO PK-76693-900 FOR ALL PACKAGING SPECIFICATIONS.
- PROCESSING: PRESSFIT TO PC BOARD.
- MATING PC BOARD THICKNESS = 1.60±0.16MM OVER CONTACT PADS.
- THIS PART CONFORMS TO CLASS B REQUIREMENTS OF COSMETIC SPEC PS-45499-002
- FOR EDGE CARD AND MOUNTING PCB LAYOUT DETAIL SEE CORRESPONDING SALES DRAWING.

INITIAL RELEASE EC NO: UCP2015-1097 DRWN:RWHIPPLE 2014/09/15 CHKD:MPOFF 2014/09/15 APPR:SMILLER 2014/09/29	DESCRIPTION REV A	QUALITY SYMBOLS	GENERAL TOLERANCES (UNLESS SPECIFIED)	DIMENSION STYLE MM ONLY	SCALE 2:1	DESIGN UNITS METRIC	THIRD ANGLE PROJECTION
		▽=0	mm INCH	DRAWN BY DATE RWHIPPLE 2014/09/15	TITLE EDGE LINE 12.5GB 0.062*PCB 0.8MM PITCH		
		▽=0	4 PLACES ± --- ± ---	CHECKED BY DATE MPOFF 2014/09/15			
		▽=0	3 PLACES ± --- ± ---	APPROVED BY DATE SMILLER 2014/09/29			
	2 PLACES ± 0.13 ± ---	MATERIAL NO.	DOCUMENT NO.				
		1 PLACE ± 0.25 ± ---	ANGULAR ±1/2°	SEE TABLE	RSD-76691-100	SHEET NO. 1 OF 1	
		0 PLACE ± --- ± ---	DRAFT WHERE APPLICABLE MUST REMAIN WITHIN DIMENSIONS	SIZE C	THIS DRAWING CONTAINS INFORMATION THAT IS PROPRIETARY TO MOLEX INCORPORATED AND SHOULD NOT BE USED WITHOUT WRITTEN PERMISSION		

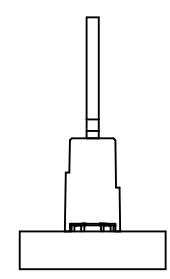
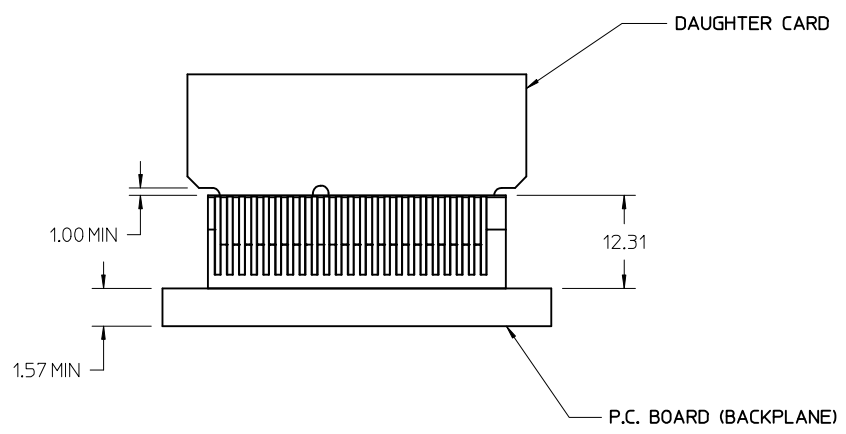
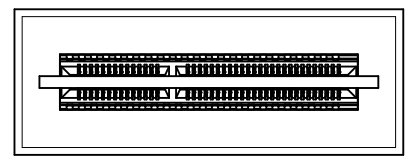


NOTES:

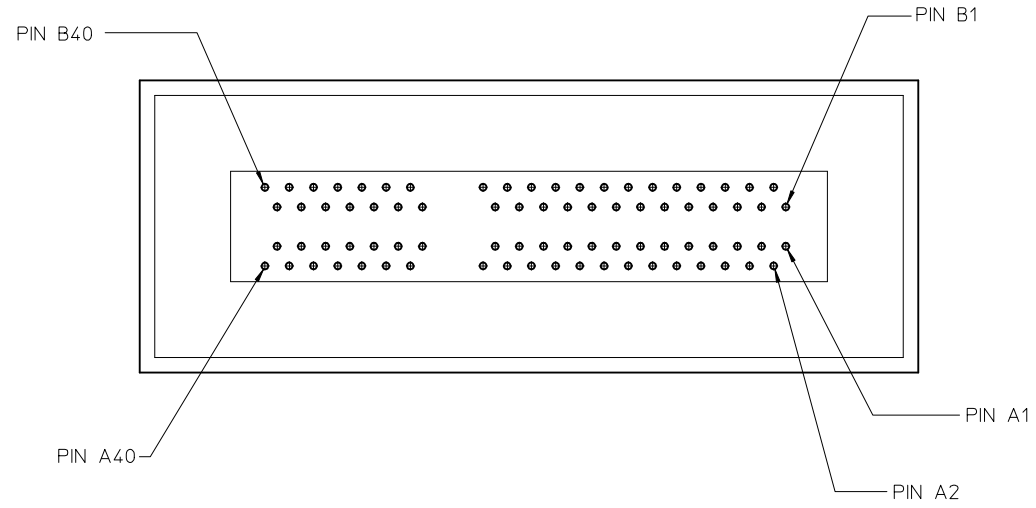
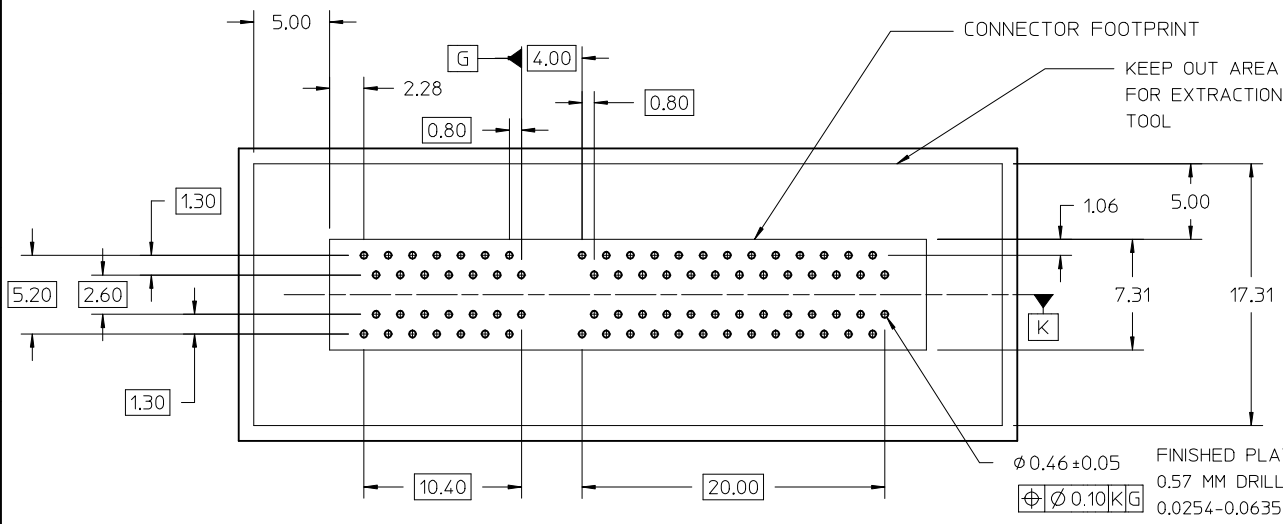
1. MATERIAL:
HOUSING - GLASS FILLED THERMOPLASTIC, 94-V0, BLACK
TERMINALS - COPPER ALLOY
2. FINISH:
CONTACT AREA: HARD GOLD -0.76µm MIN OVER 3.80µm NICKEL
COMPLIANT AREA: TIN - 0.76/1.52µm OVER NICKEL
3. REFER TO PS-76421-001 PRODUCT SPECIFICATION FOR ALL ELECTRICAL, MECHANICAL AND ENVIRONMENTAL SPECIFICATIONS.
4. REFER TO PK-75594-999 FOR ALL PACKAGING SPECIFICATIONS.
5. PROCESSING: PRESSFIT TO PC BOARD.
6. IN ORDER TO PROVIDE OPTIMAL ELECTRICAL PERFORMANCE, THE MATING BOARD MUST MEET REQUIREMENTS OF AMC.0 R2 SPECIFICATION.
7. MATING PC BOARD THICKNESS = 1.60±0.16MM OVER CONTACT PADS.
8. THIS PART CONFORMS TO CLASS B REQUIREMENTS OF COSMETIC SPEC PS-45499-002

INITIAL RELEASE EC NO: UCP2015-1097 DRWR:RWHIPPLE 2014/09/16 CHKD:MPOFF 2014/09/16 APPR:SMILLER 2014/09/29	QUALITY SYMBOLS ▽=0 ▽=1 ▽=1	GENERAL TOLERANCES (UNLESS SPECIFIED)		DIMENSION STYLE MM ONLY	SCALE 2:1	DESIGN UNITS METRIC	THIRD ANGLE PROJECTION	
		4 PLACES ± --- ± ---	DRAWN BY RWHIPPLE	DATE 2014/09/16	TITLE EDGELINE 12.5GB 80CKTS 0.062*PCB 0.8MM PITCH			
		3 PLACES ± --- ± ---	CHECKED BY MPOFF	DATE 2013/09/16	MATERIAL NO. 766912080			
		2 PLACES ± 0.15 ± ---	APPROVED BY SMILLER	DATE 2014/09/29	DOCUMENT NO. RSD-76691-111	SHEET NO. 1 OF 5		
1 PLACE ± 0.25 ± ---	ANGULAR ± 2 °		DRAFT WHERE APPLICABLE MUST REMAIN WITHIN DIMENSIONS					
0 PLACE ± --- ± ---	SIZE C		THIS DRAWING CONTAINS INFORMATION THAT IS PROPRIETARY TO MOLEX INCORPORATED AND SHOULD NOT BE USED WITHOUT WRITTEN PERMISSION					

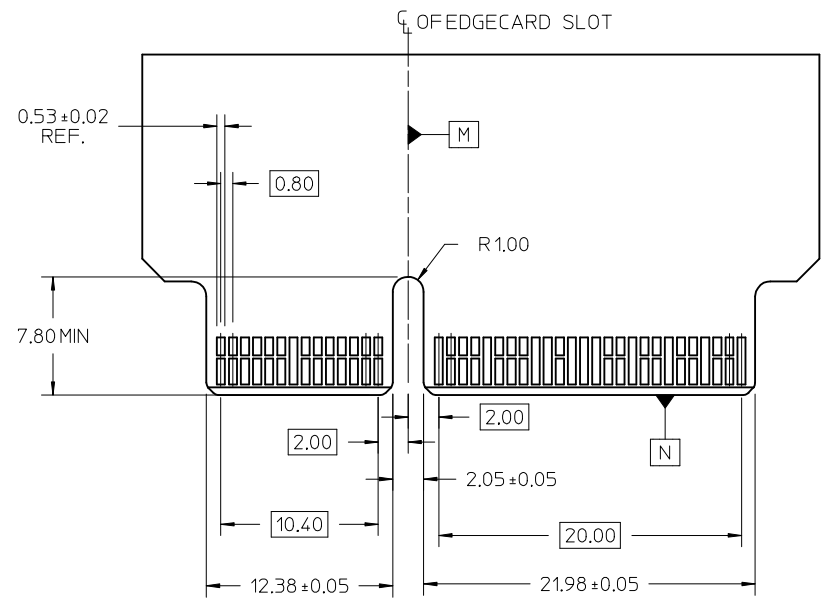
P.C. BOARD MOUNTING



SEE SHEET 1 EC NO: UCP2015-1097 DRWN:RWHPPL 2014/09/16 CHKD:MPOFF 2014/09/16 APPR:SMILLER 2014/09/29	DESCRIPTION REV A	QUALITY SYMBOLS ▽=0 ▽=0 ▽=0	GENERAL TOLERANCES (UNLESS SPECIFIED)		DIMENSION STYLE MM ONLY		SCALE 2:1	DESIGN UNITS METRIC	THIRD ANGLE PROJECTION			
			mm	INCH	DRAWN BY RWHPPL	DATE 2014/09/16	TITLE EDGE LINE 12.5GB 80CKTS 0.062"PCB 0.8MM PITCH					
			4 PLACES ± ---	± ---	CHECKED BY MPOFF	DATE 2013/09/16						
			3 PLACES ± ---	± ---	APPROVED BY SMILLER	DATE 2014/09/29	MATERIAL NO.		DOCUMENT NO.		SHEET NO.	
2 PLACES ± 0.15	± ---	SEE SHEET 1		RSD-76691-111		2 OF 5						
1 PLACE ± 0.25	± ---	DRAFT WHERE APPLICABLE MUST REMAIN WITHIN DIMENSIONS		ANGULAR ± 2 °		THIS DRAWING CONTAINS INFORMATION THAT IS PROPRIETARY TO MOLEX INCORPORATED AND SHOULD NOT BE USED WITHOUT WRITTEN PERMISSION						
0 PLACE ± ---	± ---											



MOTHER BOARD HOLE LAYOUT
(COMPONENT SIDE)



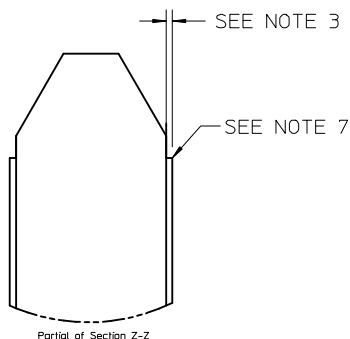
DAUGHTER CARD

SEE SHEET 1 EC NO: UCP2015-1097 DRWNR: RWHIPPLE 2014/09/16 CHKD: MPOFF 2014/09/16 APPR: SMILLER 2014/09/29 REV: A	QUALITY SYMBOLS $\nabla = 0$ $\nabla = 0$ $\nabla = 0$	GENERAL TOLERANCES (UNLESS SPECIFIED) <table border="1"> <thead> <tr> <th></th> <th>mm</th> <th>INCH</th> </tr> </thead> <tbody> <tr> <td>4 PLACES</td> <td>± ---</td> <td>± ---</td> </tr> <tr> <td>3 PLACES</td> <td>± ---</td> <td>± ---</td> </tr> <tr> <td>2 PLACES</td> <td>± 0.15</td> <td>± ---</td> </tr> <tr> <td>1 PLACE</td> <td>± 0.25</td> <td>± ---</td> </tr> <tr> <td>0 PLACE</td> <td>± ---</td> <td>± ---</td> </tr> </tbody> </table>		mm	INCH	4 PLACES	± ---	± ---	3 PLACES	± ---	± ---	2 PLACES	± 0.15	± ---	1 PLACE	± 0.25	± ---	0 PLACE	± ---	± ---	DIMENSION STYLE MM ONLY	SCALE 4:1	DESIGN UNITS METRIC	THIRD ANGLE PROJECTION
		mm	INCH																					
	4 PLACES	± ---	± ---																					
	3 PLACES	± ---	± ---																					
	2 PLACES	± 0.15	± ---																					
1 PLACE	± 0.25	± ---																						
0 PLACE	± ---	± ---																						
DRAWN BY: RWHIPPLE 2014/09/16 CHECKED BY: MPOFF 2013/09/16 APPROVED BY: SMILLER 2014/09/29		MATERIAL NO.		DOCUMENT NO.		SHEET NO.																		
DRAFT WHERE APPLICABLE MUST REMAIN WITHIN DIMENSIONS		SEE SHEET 1		EDGELINE 12.5GB 80CKTS 0.062"PCB 0.8MM PITCH		3 OF 5																		
THIS DRAWING CONTAINS INFORMATION THAT IS PROPRIETARY TO MOLEX INCORPORATED AND SHOULD NOT BE USED WITHOUT WRITTEN PERMISSION																								

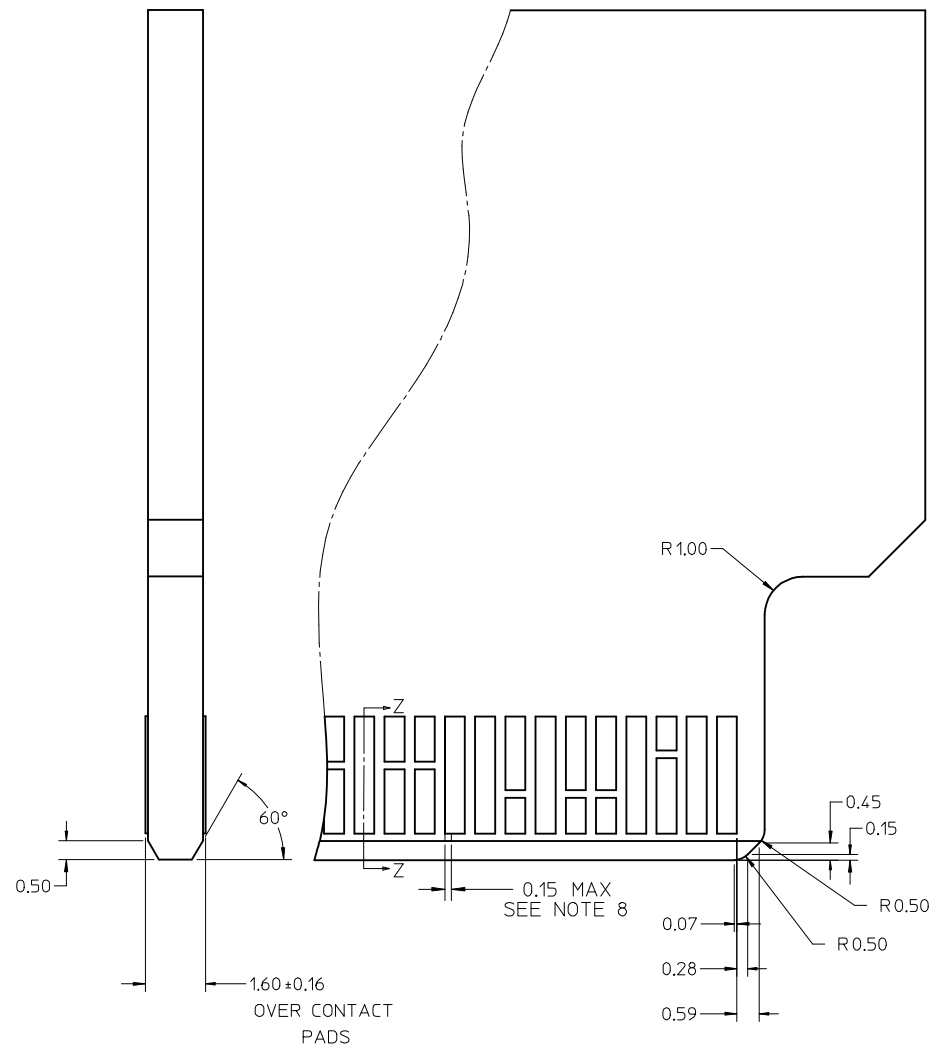
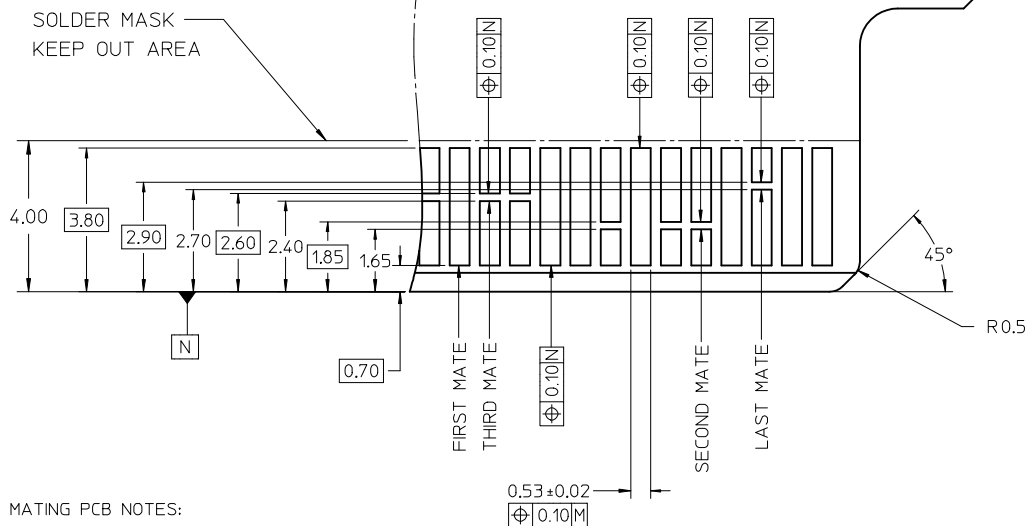
MODULE EDGE CARD CONTACT DETAIL

Note:

These are generic details that describe the configuration of various PCB design elements. The customer must determine where and when to use each element to accommodate their specific application.*



SIDE 1



MATING PCB NOTES:

1. CONNECTOR LAND CONDITIONS SHALL MEET THE MOST CURRENT REVISION OF PCB SPECIFICATION IPC-6012C-2010 SECTION 3.5.4.4.
2. DIMENSIONS APPLY TO LANDS ON BOTH SIDES OF THE BOARD.
3. THE THICKNESS OF THE OUTER METAL LAYERS, INCLUDING FOIL, COPPER PLATING, AND THE PROTECTIVE SURFACE FINISH, SHALL BE 0.066mm MAX.
4. CHAMFER ROUGHNESS NOT TO EXCEED 3.17 MICROMETERS.
5. CHAMFER PROCESS SHALL NOT DAMAGE THE GOLD EDGE LANDS.
6. EDGE CARD CHAMFER NOT TO GO THRU GOLD LANDS.
7. 0.03mm MAX PLATING OVERHANG ON ALL GOLD LAND EDGES.
8. MOLEX RECOMMENDS NO TIE-BARS ON THE LEADING EDGE OF THE GOLD LAND. IF TIE-BARS ARE USED, THEY SHALL BE PLACED TO ONE SIDE OF THE GOLD LAND. APPLIES TO ALL GOLD LANDS.

SEE SHEET 1 EC NO: UCP2015-1097 DRW:RWHIPPLE 2014/09/16 CHKD:MPOFF 2014/09/16 APPR:SMILLER 2014/09/29	QUALITY SYMBOLS	GENERAL TOLERANCES (UNLESS SPECIFIED)	DIMENSION STYLE	SCALE	DESIGN UNITS	THIRD ANGLE PROJECTION
	▽=0	mm INCH	MM ONLY	10:1	METRIC	
	▽=0	4 PLACES ± --- ± ---	DRAWN BY DATE			TITLE
	▽=0	3 PLACES ± --- ± ---	RWHIPPLE 2014/09/16			EDGELINE 12.5GB 80CKTS 0.062"PCB 0.8MM PITCH
		2 PLACES ± 0.15 ± ---	CHECKED BY DATE			
		1 PLACE ± 0.25 ± ---	MPOFF 2013/09/16			
		0 PLACE ± --- ± ---	APPROVED BY DATE			
		ANGULAR ± 2 °	SMILLER 2014/09/29			
		DRAFT WHERE APPLICABLE MUST REMAIN WITHIN DIMENSIONS	MATERIAL NO.		DOCUMENT NO.	SHEET NO.
			SEE SHEET 1		RSD-76691-111	4 OF 5
			SIZE C	THIS DRAWING CONTAINS INFORMATION THAT IS PROPRIETARY TO MOLEX INCORPORATED AND SHOULD NOT BE USED WITHOUT WRITTEN PERMISSION		

molex

76691-2080 LEGEND 80 CIRCUITS / 0.062"PCB

COMPONENT SIDE 1

COMPONENT SIDE 2

PIN NO.	SIGNAL	ALLEGRO PIN NO.				SIGNAL	PIN NO.
B1	GND		○		○	GND	A1
B2	B_TP+	○			○	A_TP+	A2
B3	B_TP-		○		○	A_TP-	A3
B4	GND	○			○	GND	A4
B5	GND		○		○	GND	A5
B6	B_RP+	○			○	A_RP+	A6
B7	B_RP-		○		○	A_RP-	A7
B8	GND	○			○	GND	A8
B9	GND		○		○	GND	A9
B10	B_TS+	○			○	A_TS+	A10
B11	B_TS-		○		○	A_TS-	A11
B12	GND	○			○	GND	A12
B13	GND		○		○	GND	A13
B14	B_RS+	○			○	A_RS+	A14
B15	B_RS-		○		○	A_RS-	A15
B16	GND	○			○	GND	A16
B17	GND		○		○	GND	A17
B18	B_PRSNT	○			○	A_PRSNT	A18
B19	GND		○		○	GND	A19
B20	B_RDY	○			○	A_RDY	A20
B21	GND		○		○	GND	A21
B22	B_5V_PRE	○			○	A_5V_PRE	A22
B23	B_5V		○		○	A_5V	A23
B24	B_5V	○			○	A_5V	A24
B25	B_5V		○		○	A_5V	A25
B26	B_5V	○			○	A_5V	A26

POLARIZATION KEY

B27	GND		○		○	GND	A27
B28	GND	○			○	GND	A28
B29	GND		○		○	GND	A29
B30	GND	○			○	GND	A30
B31	B_12V_PRE		○		○	A_12V_PRE	A31
B32	B_12V	○			○	A_12V	A32
B33	B_12V		○		○	A_12V	A33
B34	B_12V	○			○	A_12V	A34
B35	B_12V		○		○	A_12V	A35
B36	GND	○			○	GND	A36
B37	GND		○		○	GND	A37
B38	GND	○			○	GND	A38
B39	GND		○		○	GND	A39
B40	GND	○			○	GND	A40

SEE SHEET 1 EC NO: UCP2015-1097 DRWNR:RWHIPPLE 2014/09/16 CHKD:MPOFF 2014/09/16 APPR:SMILLER 2014/09/29	REV DESCRIPTION A	QUALITY SYMBOLS	GENERAL TOLERANCES (UNLESS SPECIFIED)	DIMENSION STYLE	SCALE	DESIGN UNITS	THIRD ANGLE PROJECTION
		▽=0 ▽=0 ▽=0	mm INCH 4 PLACES ± --- ± --- 3 PLACES ± --- ± --- 2 PLACES ± 0.15 ± --- 1 PLACE ± 0.25 ± --- 0 PLACE ± --- ± ---	MM ONLY DRAWN BY DATE RWHIPPLE 2014/09/16 CHECKED BY DATE MPOFF 2013/09/16 APPROVED BY DATE SMILLER 2014/09/29	2:1	METRIC	EDGELINE 12.5GB 80CKTS 0.062"PCB 0.8MM PITCH
		ANGULAR ± 2 ° DRAFT WHERE APPLICABLE MUST REMAIN WITHIN DIMENSIONS	MATERIAL NO. SEE SHEET 1	DOCUMENT NO. RSD-76691-111	SHEET NO. 5 OF 5		
		THIS DRAWING CONTAINS INFORMATION THAT IS PROPRIETARY TO MOLEX INCORPORATED AND SHOULD NOT BE USED WITHOUT WRITTEN PERMISSION					