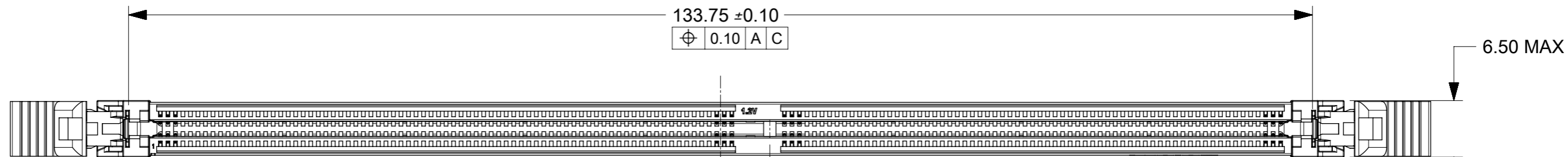


NOTES:

1. MATERIAL : HOUSING - HALOGEN FREE HIGH TEMP POLYAMIDE, GLASS FILLED, UL94V-0.
COLOUR : SEE TABLE ON SHEET 5.
LATCH - HALOGEN FREE HIGH TEMP POLYAMIDE, GLASS FILLED, UL94V-0.
COLOUR : SEE TABLE ON SHEET 5.
TERMINAL : COPPER ALLOY.
FORKLOCK: COPPER ALLOY.
2. FINISHES - SEE TABLE ON SHEET 5.
3. PRODUCT SPECIFICATION : SEE TABLE ON SHEET 5.
4. PACKAGING SPECIFICATION: PRODUCT SHALL BE PACKED IN TRAY, SEE SHEET 5
5. CARD SLOT ACCEPTS 1.40±0.10MM MODULE THICKNESS (MEASURED OVER P.C. PADS).
6. MOLEX LOGO, DATE & PART NO. INDICATED ON HOUSING.
7. MODULE SEATING PLANE.
8. KEEP OUT ZONE RESERVED FOR LATCH.
9. KEEP OUT AREA IS THE AREA WHERE THE CONNECTOR (INCLUDES LATCHES IN OPENING POSITION) IS MOUNTED ON THE PCB.
- 10.REFER TO AS-78726-001 FOR CONNECTOR APPLICATION GUIDELINE.
- 11.REFER TO AS-78726-002 FOR PCB ROUTING RECOMMENDATIONS.

DETAIL 5 : BUMPER ZONE

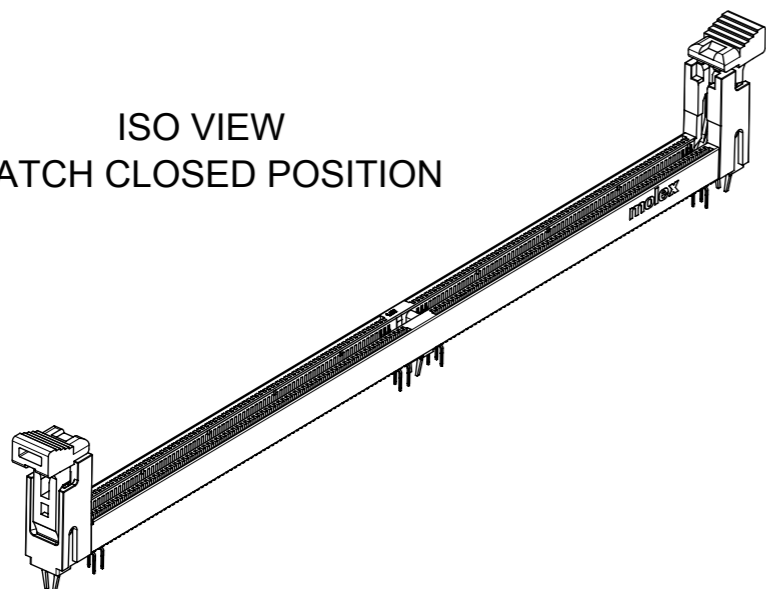
THIS DRAWING CONTAINS INFORMATION THAT IS PROPRIETARY TO MOLEX ELECTRONIC TECHNOLOGIES, LLC AND SHOULD NOT BE USED WITHOUT WRITTEN PERMISSION		CURRENT REV DESC: ADD PART NUMBERS		molex	
DIMENSION UNITS	SCALE				
mm	NTS			DDR4 DIMM, 0.85MM PITCH 288CKTS, VERTICAL TH	
GENERAL TOLERANCES (UNLESS SPECIFIED)		EC NO: 632438		PRODUCT CUSTOMER DRAWING	
ANGULAR TOL	± 3.0°	DRWN: CCHEN103	2020/02/11	DOCUMENT NUMBER	
4 PLACES	±	CHK'D: JKACHLIC	2020/02/27	SD-78726-002	
3 PLACES	±	APPR: JKACHLIC	2020/02/27	DOC TYPE	DOC PART
2 PLACES	± 0.2	INITIAL REVISION:		PSD	000
1 PLACE	±	DRWN: VNANDAM	2016/08/03	REVISION	
0 PLACES	±	APPR: SHLENI	2017/01/04	A5	
DRAFT WHERE APPLICABLE MUST REMAIN WITHIN DIMENSIONS	THIRD ANGLE PROJECTION	DRAWING	SERIES	MATERIAL NUMBER	CUSTOMER
		A3-SIZE	78726		GENERAL MARKET
DOCUMENT STATUS		P1		RELEASE DATE	2020/02/27 05:19:52
SHEET NUMBER		1 OF 6			



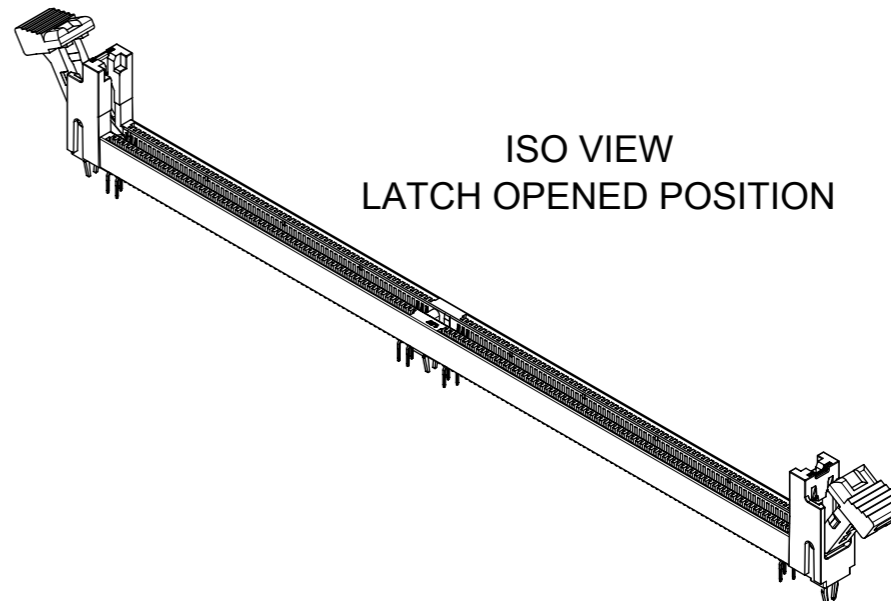
CENTRE LINE OF
133.75 FEATURE

TOP VIEW
LATCH OPENING POSITION

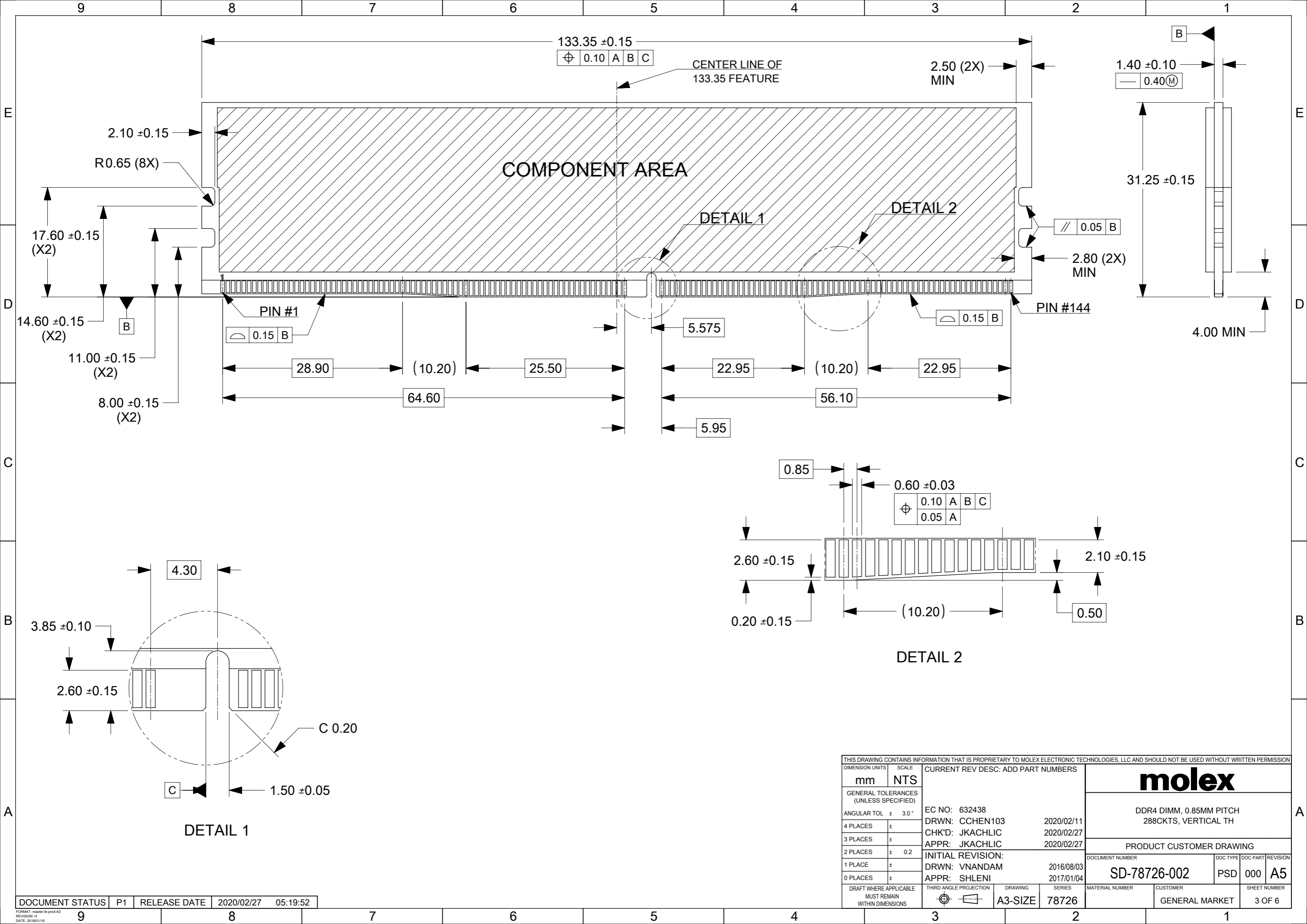
ISO VIEW
LATCH CLOSED POSITION



ISO VIEW
LATCH OPENED POSITION



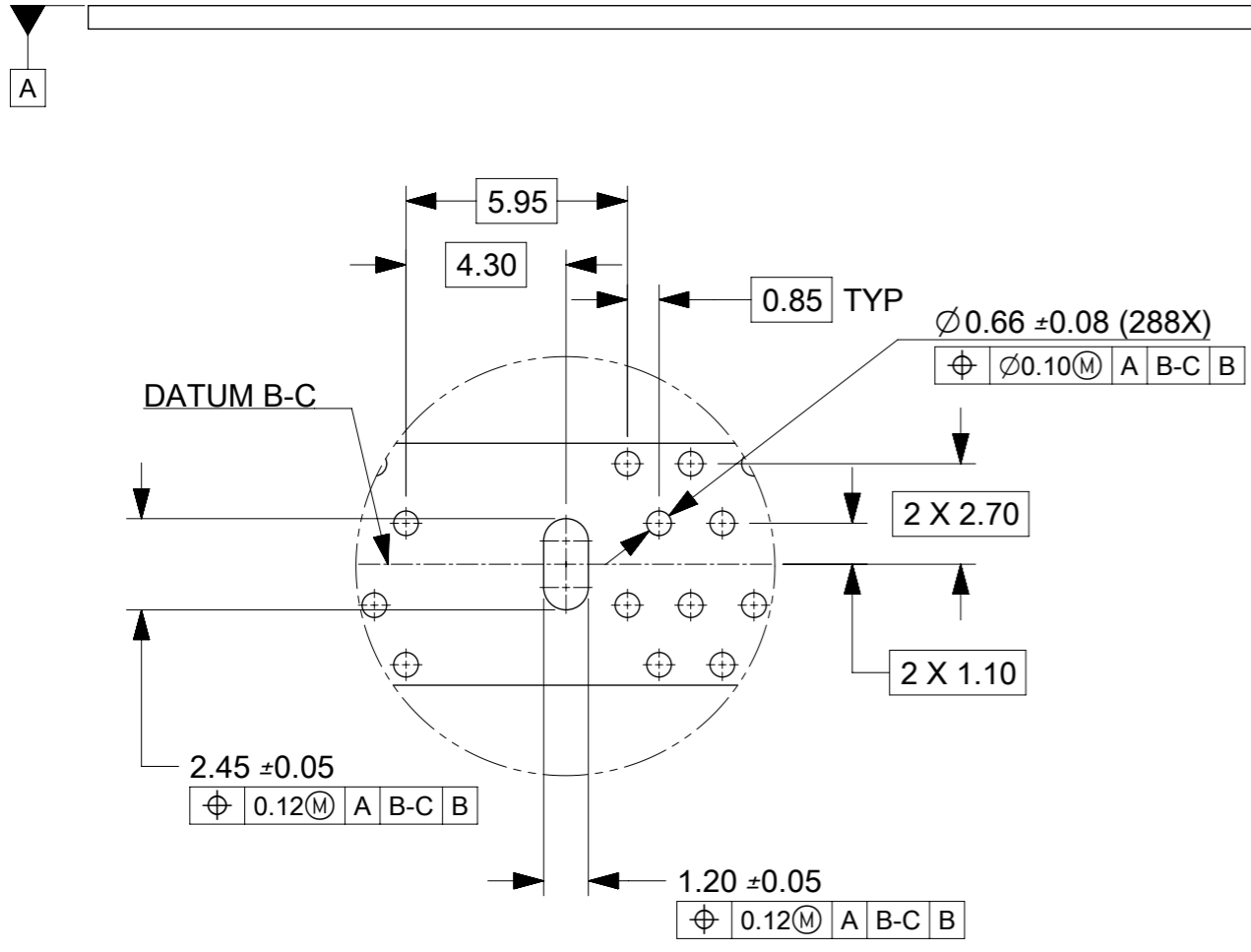
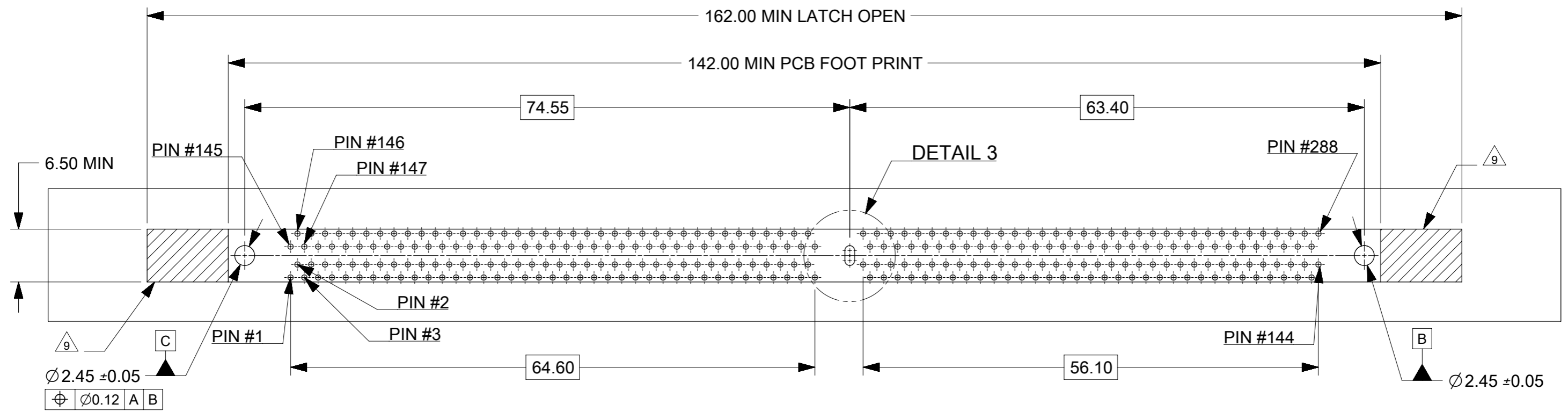
THIS DRAWING CONTAINS INFORMATION THAT IS PROPRIETARY TO MOLEX ELECTRONIC TECHNOLOGIES, LLC AND SHOULD NOT BE USED WITHOUT WRITTEN PERMISSION									
DIMENSION UNITS		SCALE		CURRENT REV DESC: ADD PART NUMBERS				molex	
mm		NTS							
GENERAL TOLERANCES (UNLESS SPECIFIED)									
ANGULAR TOL ± 3.0 °									
4 PLACES ±									
3 PLACES ±									
2 PLACES ± 0.2									
1 PLACE ±									
0 PLACES ±									
DRAFT WHERE APPLICABLE MUST REMAIN WITHIN DIMENSIONS				THIRD ANGLE PROJECTION		DRAWING		SERIES	
						A3-SIZE		78726	
EC NO: 632438 DRWN: CCHEN103 2020/02/11 CHK'D: JKACHLIC 2020/02/27 APPR: JKACHLIC 2020/02/27								INITIAL REVISION: DRWN: VNANDAM 2016/08/03 APPR: SHLENI 2017/01/04	
DOCUMENT NUMBER						DOC TYPE		DOC PART	
SD-78726-002						PSD		000	
MATERIAL NUMBER						CUSTOMER		REVISION	
						GENERAL MARKET		A5	
SHEET NUMBER						SHEET NUMBER		SHEET NUMBER	
2 OF 6						2 OF 6		2 OF 6	



THIS DRAWING CONTAINS INFORMATION THAT IS PROPRIETARY TO MOLEX ELECTRONIC TECHNOLOGIES, LLC AND SHOULD NOT BE USED WITHOUT WRITTEN PERMISSION		CURRENT REV DESC: ADD PART NUMBERS		molex	
DIMENSION UNITS mm	SCALE NTS	EC NO: 632438			
GENERAL TOLERANCES (UNLESS SPECIFIED)		DRWN: CCHEN103		2020/02/11	
ANGULAR TOL ± 3.0°		CHK'D: JKACHLIC		2020/02/27	
4 PLACES ±		APPR: JKACHLIC		2020/02/27	
3 PLACES ±		INITIAL REVISION:		DOCUMENT NUMBER	
2 PLACES ± 0.2		DRWN: VNANDAM		SD-78726-002	
1 PLACE ±		APPR: SHLENI		DOC TYPE DOC PART REVISION	
0 PLACES ±		THIRD ANGLE PROJECTION		PSD 000 A5	
DRAFT WHERE APPLICABLE MUST REMAIN WITHIN DIMENSIONS		DRAWING A3-SIZE		SERIES 78726	
		MATERIAL NUMBER		CUSTOMER	
				GENERAL MARKET	
				SHEET NUMBER 3 OF 6	

DOCUMENT STATUS	P1	RELEASE DATE	2020/02/27	05:19:52
-----------------	----	--------------	------------	----------

FORMAT: master-ib-prod-A3
REVISION: 11
DATE: 2018/01/18



THIS DRAWING CONTAINS INFORMATION THAT IS PROPRIETARY TO MOLEX ELECTRONIC TECHNOLOGIES, LLC AND SHOULD NOT BE USED WITHOUT WRITTEN PERMISSION															
DIMENSION UNITS		SCALE		CURRENT REV DESC: ADD PART NUMBERS											
mm		NTS													
GENERAL TOLERANCES (UNLESS SPECIFIED)										DDR4 DIMM, 0.85MM PITCH 288CKTS, VERTICAL TH					
ANGULAR TOL ± 3.0°										PRODUCT CUSTOMER DRAWING					
4 PLACES ±										EC NO: 632438		2020/02/11		DOCUMENT NUMBER	
3 PLACES ±										DRWN: CCHEN103		2020/02/27		SD-78726-002	
2 PLACES ± 0.2				CHK'D: JKACHLIC		2020/02/27		DOC TYPE							
1 PLACE ±				APPR: JKACHLIC		2020/02/27		DOC PART							
0 PLACES ±				INITIAL REVISION:		2016/08/03		REVISION							
DRAFT WHERE APPLICABLE MUST REMAIN WITHIN DIMENSIONS				DRWN: VNANDAM		2017/01/04		A5							
THIRD ANGLE PROJECTION		DRAWING		SERIES		MATERIAL NUMBER		CUSTOMER							
		A3-SIZE		78726		GENERAL MARKET		SHEET NUMBER							
								4 OF 6							

DOCUMENT STATUS	P1	RELEASE DATE	2020/02/27	05:19:52
-----------------	----	--------------	------------	----------

CKT SIZE	ASSEMBLY PART NO.	HOUSING COLOR	LATCH COLOR	DIM "P"	RECOMMENDED PCB THICKNESS	PLATING OPTION		PRODUCT SPEC. NO.	PACKAGING SPEC. NO.
						TERMINAL	FORKLOCK		
288	78726-1051	BLACK	BLACK	2.10	1.57	0.76 MICROMETER (30 MICROINCH) MIN GOLD ON CONTACT	1 MICROMETER (40 MICROINCH) MIN TIN OVERALL (PRE-PLATED)	PS-78726-001	PK-78726-001
	78726-1039			2.40	1.57				
	78726-1002			2.67	1.57				
	78726-1003			3.18	2.36				
	78726-1026			3.50	3.00				
	78726-1052	BLACK	WHITE	2.10	1.57				
	78726-1040			2.40	1.57				
	78726-1004			2.67	1.57				
	78726-1005			3.18	2.36				
	78726-1027			3.50	3.00				
	78726-1053	WHITE	BLACK	2.10	1.57				
	78726-1041			2.40	1.57				
	78726-1006			2.67	1.57				
	78726-1007			3.18	2.36				
	78726-1028			3.50	3.00				
	78726-1054	WHITE	WHITE	2.10	1.57				
	78726-1042			2.40	1.57				
	78726-1008			2.67	1.57				
	78726-1009			3.18	2.36				
	78726-1029			3.50	3.00				
	78726-1055	BLUE	BLUE	2.10	1.57				
	78726-1043			2.40	1.57				
	78726-1010			2.67	1.57				
	78726-1011			3.18	2.36				
	78726-1030			3.50	3.00				
	78726-1056	BLUE	WHITE	2.10	1.57				
	78726-1044			2.40	1.57				
	78726-1022			2.67	1.57				
	78726-1023			3.18	2.36				
	78726-1031			3.50	3.00				
78726-1063	YELLOW	WHITE	2.10	1.57					
78726-1064			2.40	1.57					
78726-1065			2.67	1.57					
78726-1066			3.18	2.36					
78726-1067			3.50	3.00					
78726-3005	BLACK	WHITE	3.18	2.36					
78726-3052			2.10	1.57					

THIS DRAWING CONTAINS INFORMATION THAT IS PROPRIETARY TO MOLEX ELECTRONIC TECHNOLOGIES, LLC AND SHOULD NOT BE USED WITHOUT WRITTEN PERMISSION

DIMENSION UNITS	SCALE	CURRENT REV DESC: ADD PART NUMBERS		molex		
mm	NTS					
GENERAL TOLERANCES (UNLESS SPECIFIED)		EC NO: 632438		DDR4 DIMM, 0.85MM PITCH		
ANGULAR TOL	± 3.0°	DRWN: CCHEN103	2020/02/11	288CKTS, VERTICAL TH		
4 PLACES	±	CHK'D: JKACHLIC	2020/02/27			
3 PLACES	±	APPR: JKACHLIC	2020/02/27			
2 PLACES	± 0.2	INITIAL REVISION:		PRODUCT CUSTOMER DRAWING		
1 PLACE	±	DRWN: VNANDAM	2016/08/03	DOCUMENT NUMBER	DOC TYPE	DOC PART
0 PLACES	±	APPR: SHLENI	2017/01/04	SD-78726-002	PSD	000
DRAFT WHERE APPLICABLE MUST REMAIN WITHIN DIMENSIONS		THIRD ANGLE PROJECTION	DRAWING	SERIES	MATERIAL NUMBER	CUSTOMER
			A3-SIZE	78726		GENERAL MARKET
						SHEET NUMBER
						5 OF 6

CKT SIZE	ASSEMBLY PART NO.	HOUSING COLOR	LATCH COLOR	DIM "P"	RECOMMENDED PCB THICKNESS	PLATING OPTION		PRODUCT SPEC. NO.	PACKAGING SPEC. NO.
						TERMINAL	FORKLOCK		
288	78726-1057	BLACK	BLACK	2.10	1.57	0.38 MICROMETER (15 MICROINCH) MIN GOLD ON CONTACT	1 MICROMETER (40 MICROINCH) MIN TIN OVERALL (PRE-PLATED)	PS-78726-002	PK-78726-001
	78726-1045			2.40	1.57				
	78726-1012			2.67	1.57				
	78726-1013			3.18	2.36				
	78726-1032			3.50	3.00				
	78726-1058	BLACK	WHITE	2.10	1.57				
	78726-1046			2.40	1.57				
	78726-1014			2.67	1.57				
	78726-1015			3.18	2.36				
	78726-1033			3.50	3.00				
	78726-1059	WHITE	BLACK	2.10	1.57				
	78726-1047			2.40	1.57				
	78726-1016			2.67	1.57				
	78726-1017			3.18	2.36				
	78726-1034			3.50	3.00				
	78726-1060	WHITE	WHITE	2.10	1.57				
	78726-1048			2.40	1.57				
	78726-1018			2.67	1.57				
	78726-1019			3.18	2.36				
	78726-1035			3.50	3.00				
	78726-1061	BLUE	BLUE	2.10	1.57				
	78726-1049			2.40	1.57				
	78726-1020			2.67	1.57				
	78726-1021			3.18	2.36				
	78726-1036			3.50	3.00				
	78726-1062	BLUE	WHITE	2.10	1.57				
	78726-1050			2.40	1.57				
	78726-1024			2.67	1.57				
	78726-1025			3.18	2.36				
	78726-1037			3.50	3.00				
	78726-1068	YELLOW	WHITE	2.10	1.57				
	78726-1069			2.40	1.57				
	78726-1070			2.67	1.57				
	78726-1071			3.18	2.36				
	78726-1072			3.50	3.00				
	78726-3012	BLACK	BLACK	2.67	1.57				
78726-3032	3.50			3.00					
78726-3020	BLUE	BLUE	2.67	1.57					
78726-3036			3.50	3.00					

0.38 MICROMETER (15 MICROINCH) MIN GOLD ON CONTACT

2.54 MICROMETER (100 MICROINCH) MIN TIN ON SOLDER TAILS

1.27 MICROMETER (50 MICROINCH) MIN NICKEL UNDERPLATE

THIS DRAWING CONTAINS INFORMATION THAT IS PROPRIETARY TO MOLEX ELECTRONIC TECHNOLOGIES, LLC AND SHOULD NOT BE USED WITHOUT WRITTEN PERMISSION

DIMENSION UNITS	SCALE	CURRENT REV DESC: ADD PART NUMBERS		molex		
mm	NTS					
GENERAL TOLERANCES (UNLESS SPECIFIED)		EC NO: 632438		DDR4 DIMM, 0.85MM PITCH		
ANGULAR TOL	± 3.0°	DRWN: CCHEN103	2020/02/11	288CKTS, VERTICAL TH		
4 PLACES	±	CHK'D: JKACHLIC	2020/02/27			
3 PLACES	±	APPR: JKACHLIC	2020/02/27			
2 PLACES	± 0.2	INITIAL REVISION:		PRODUCT CUSTOMER DRAWING		
1 PLACE	±	DRWN: VNANDAM	2016/08/03	DOCUMENT NUMBER	DOC TYPE	DOC PART
0 PLACES	±	APPR: SHLENI	2017/01/04	SD-78726-002	PSD	000
DRAFT WHERE APPLICABLE MUST REMAIN WITHIN DIMENSIONS		THIRD ANGLE PROJECTION	DRAWING	SERIES	MATERIAL NUMBER	CUSTOMER
			A3-SIZE	78726		GENERAL MARKET
						SHEET NUMBER
						6 OF 6