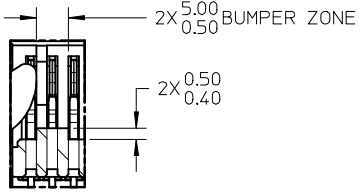


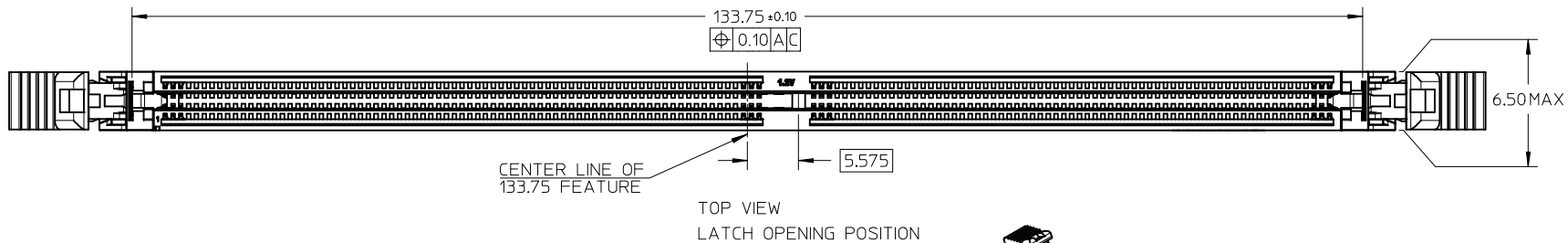
- NOTES:
- MATERIAL : HOUSING - HALOGEN FREE HIGH TEMP POLYAMIDE, GLASS FILLED, UL94V-0, COLOUR : SEE TABLE ON SHEET 5. LATCH - HALOGEN FREE HIGH TEMP POLYAMIDE, GLASS FILLED, UL94V-0, COLOUR : SEE TABLE ON SHEET 5. TERMINAL : COPPER ALLOY. METALTAB: COPPER ALLOY.
 - FINISHES - SEE TABLE ON SHEET 5.
 - PRODUCT SPECIFICATION : SEE TABLE ON SHEET 5.
 - PACKAGING SPECIFICATION: PRODUCT SHALL BE PACKED IN TRAY, SEE SHEET 5
 - CARD SLOT ACCEPTS 1.40 \pm 0.10MM MODULE THICKNESS (MEASURED OVER P.C. PADS).
 - MOLEX LOGO, DATE & PART NO. INDICATED ON HOUSING.
 - MODULE SEATING PLANE.
 - KEEP OUT ZONE RESERVED FOR LATCH.
 - KEEP OUT AREA IS THE AREA WHERE THE CONNECTOR (INCLUDES LATCHES IN OPENING POSITION) IS MOUNTED ON THE PCB.
 - REFER TO AS-78730-001 FOR CONNECTOR APPLICATION GUIDELINE.
 - REFER TO AS-78730-002 FOR PCB ROUTING RECOMMENDATIONS.



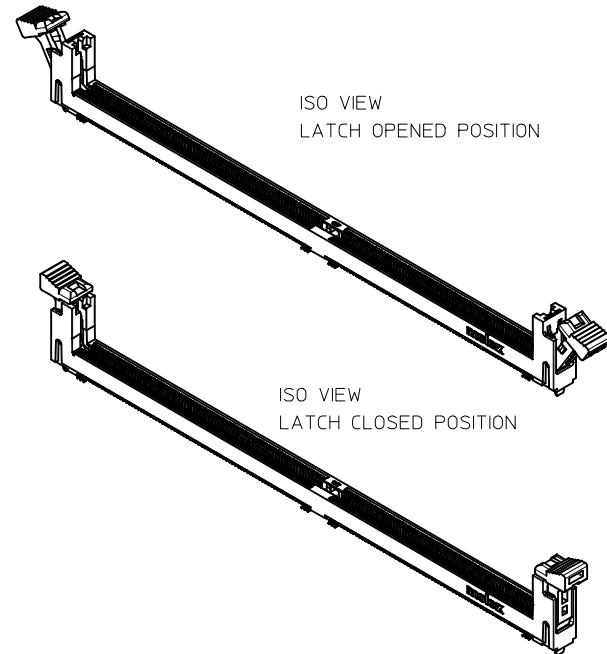
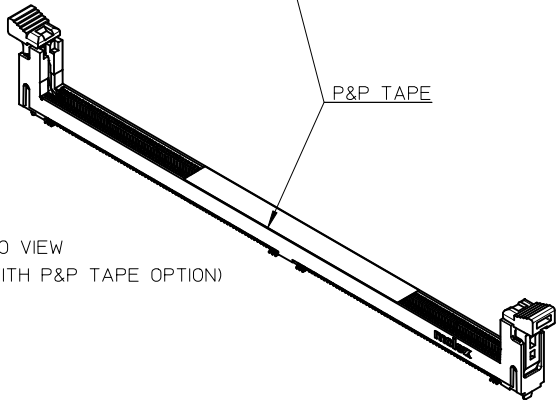
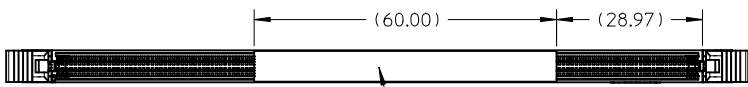
DETAIL1: BUMPER ZONE

THIS DESIGN IS BASED ON DESIGN OBJECTIVES AND IS STRICTLY TENTATIVE. IT MAY CHANGE BASED ON RESULTS OF ADDITIONAL DESIGN REVIEWS AND VERIFICATIONS.

| | | | | | | | | | | | |
|--|---|--|---------|----------------------------|---|--|------------------------|------------------------|--|--|--|
| ADD NEW PN EC NO: S2017-0584 DRW:EKSOH 2017/05/03 CHKD:CGTAN 2017/05/19 APPR:SHLENI 2017/05/19 | QUALITY SYMBOLS $\nabla_A = 0$ $\nabla_C = 0$ $\nabla_B = 0$ | GENERAL TOLERANCES (UNLESS SPECIFIED) | | DIMENSION STYLE MM ONLY | | SCALE NTS | DESIGN UNITS METRIC | THIRD ANGLE PROJECTION | | | |
| | | 4 PLACES \pm --- \pm --- | mm INCH | DRAWN BY EKSOH | DATE 2014/10/29 | TITLE DDR4 DIMM, 0.85MM PITCH 288CKTS, VERT. SMT (TAB) | | | | | |
| | | 3 PLACES \pm --- \pm --- | mm INCH | CHECKED BY CGTAN | DATE 2014/12/18 | MATERIAL NO. SEE TABLE | | | | | |
| | | 2 PLACES ± 0.20 \pm --- | mm INCH | APPROVED BY SHLENI | DATE 2014/12/18 | DOCUMENT NO. SD-78730-003 | | | | | |
| 1 PLACE \pm --- \pm --- | mm INCH | DRAFT WHERE APPLICABLE MUST REMAIN WITHIN DIMENSIONS | | SIZE A3 | THIS DRAWING CONTAINS INFORMATION THAT IS PROPRIETARY TO MOLEX INCORPORATED AND SHOULD NOT BE USED WITHOUT WRITTEN PERMISSION | | | | | | |
| 0 PLACE \pm --- \pm --- | mm INCH | ANGULAR $\pm 3^\circ$ | | SHEET NO. 1 OF 5 | | | | | | | |

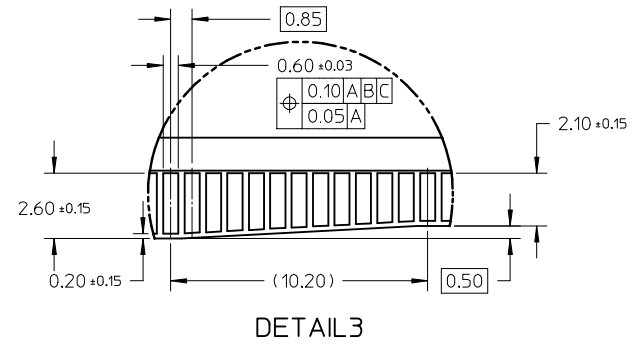
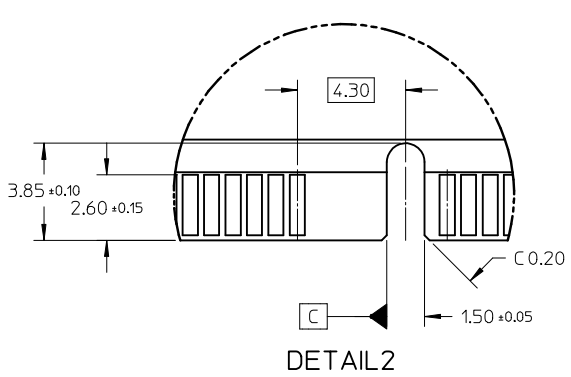
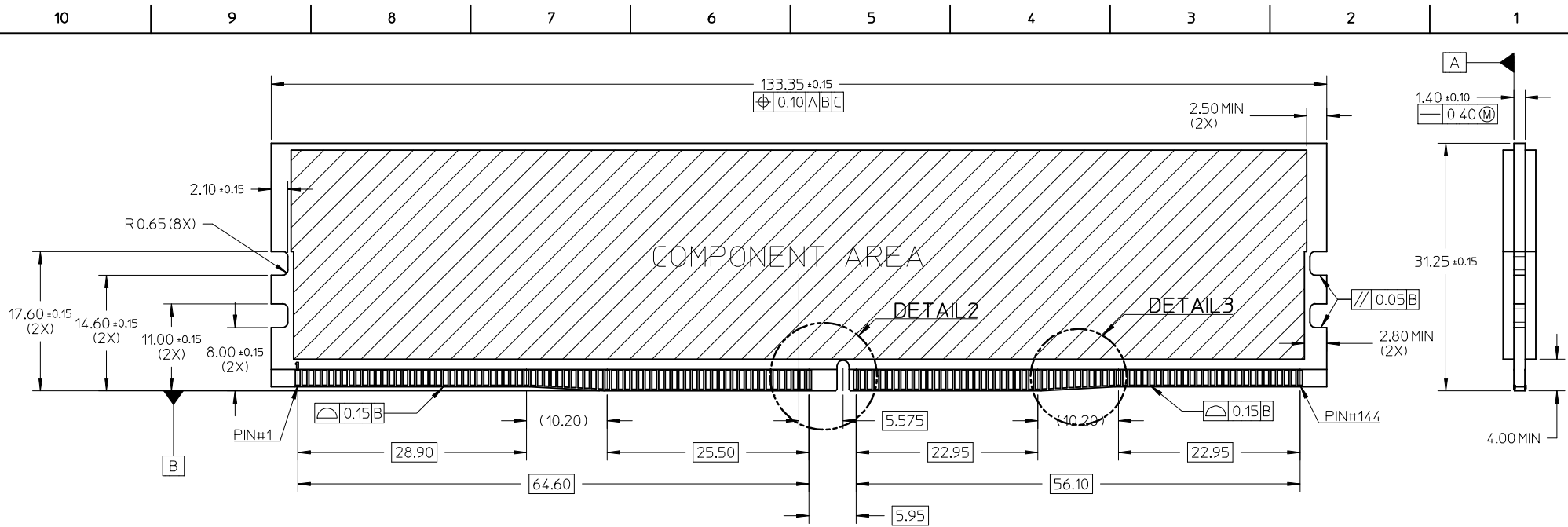


VIEWS WITH P&P TAPE OPTION



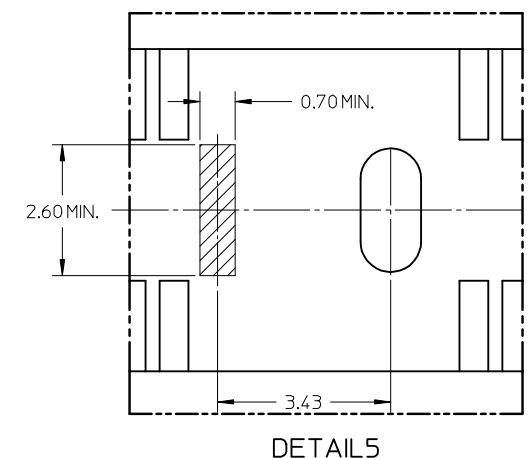
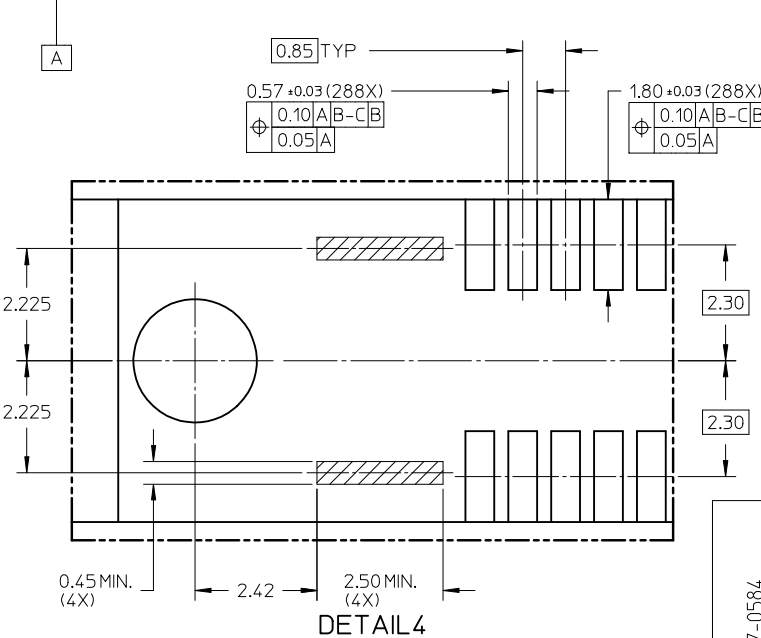
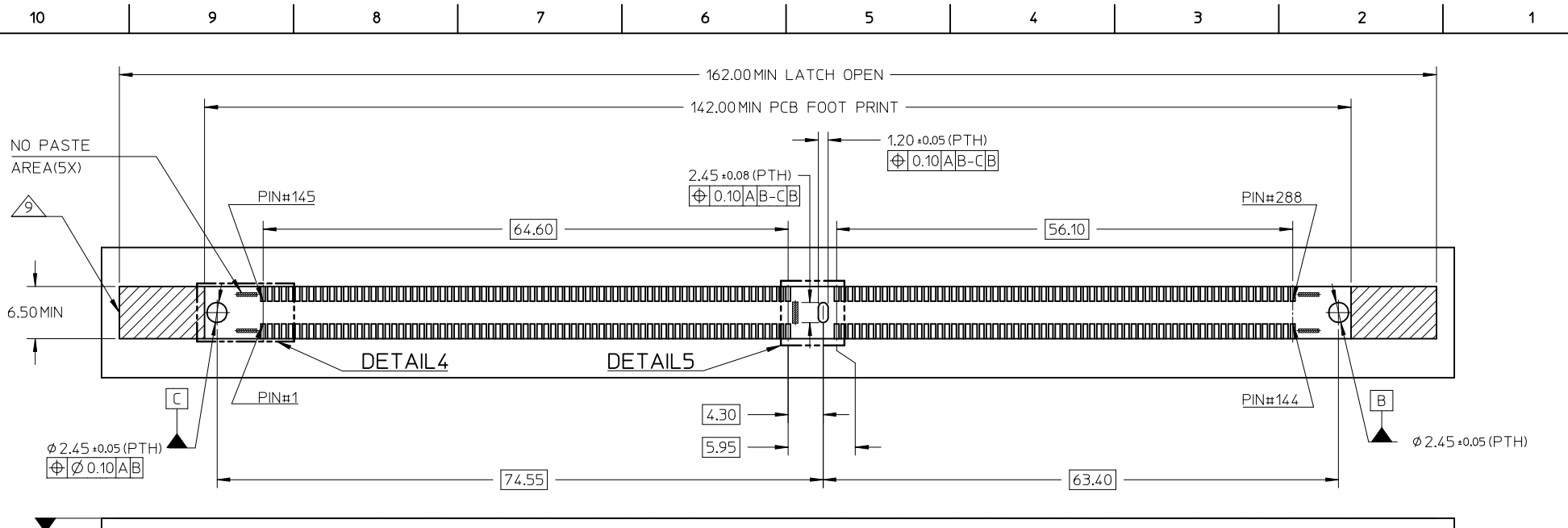
THIS DESIGN IS BASED ON DESIGN OBJECTIVES AND IS STRICTLY TENTATIVE. IT MAY CHANGE BASED ON RESULTS OF ADDITIONAL DESIGN REVIEWS AND VERIFICATIONS.

| | | | | | | | | | |
|--|-----------------|--|--------|----------------------------|-------------|--|---|------------------------|--|
| ADD NEW PN EC NO: S2017-0584 DRW:EKSOH 2017/05/03 CHKD:CGTAN 2017/05/19 APPR:SHLENI 2017/05/19 | QUALITY SYMBOLS | GENERAL TOLERANCES (UNLESS SPECIFIED) | | DIMENSION STYLE MM ONLY | | SCALE NTS | DESIGN UNITS METRIC | THIRD ANGLE PROJECTION | |
| | $\nabla_A = 0$ | 4 PLACES | ± --- | ± --- | DRAWN BY | DATE | TITLE | | |
| | $\nabla_C = 0$ | 3 PLACES | ± --- | ± --- | EKSOH | 2014/10/29 | DDR4 DIMM, 0.85MM PITCH 288CKTS, VERT. SMT (TAB) | | |
| | $\nabla_B = 0$ | 2 PLACES | ± 0.20 | ± --- | CHECKED BY | DATE | molex | | |
| | | 1 PLACE | ± --- | ± --- | CGTAN | 2014/12/18 | SD-78730-003 | | |
| | | 0 PLACE | ± --- | ± --- | APPROVED BY | DATE | SHEET NO. 2 OF 5 | | |
| | | ANGULAR ± 3 ° | | SHLENI | 2014/12/18 | DOCUMENT NO. SD-78730-003 | | | |
| | | DRAFT WHERE APPLICABLE MUST REMAIN WITHIN DIMENSIONS | | MATERIAL NO. SEE TABLE | | THIS DRAWING CONTAINS INFORMATION THAT IS PROPRIETARY TO MOLEX INCORPORATED AND SHOULD NOT BE USED WITHOUT WRITTEN PERMISSION | | | |



THIS DESIGN IS BASED ON DESIGN OBJECTIVES AND IS STRICTLY TENTATIVE. IT MAY CHANGE BASED ON RESULTS OF ADDITIONAL DESIGN REVIEWS AND VERIFICATIONS.

| ADD NEW PN EC NO: S2017-0584 DRW: EKSOH 2017/05/03 CHKD: CGTAN 2017/05/19 APPR: SHLENI 2017/05/19 | QUALITY SYMBOLS $\nabla_A = 0$ $\nabla_C = 0$ $\nabla_B = 0$ | GENERAL TOLERANCES (UNLESS SPECIFIED) <table border="1"> <thead> <tr> <th></th> <th>mm</th> <th>INCH</th> </tr> </thead> <tbody> <tr> <td>4 PLACES</td> <td>± ---</td> <td>± ---</td> </tr> <tr> <td>3 PLACES</td> <td>± ---</td> <td>± ---</td> </tr> <tr> <td>2 PLACES</td> <td>± 0.20</td> <td>± ---</td> </tr> <tr> <td>1 PLACE</td> <td>± ---</td> <td>± ---</td> </tr> <tr> <td>0 PLACE</td> <td>± ---</td> <td>± ---</td> </tr> </tbody> </table> | | mm | INCH | 4 PLACES | ± --- | ± --- | 3 PLACES | ± --- | ± --- | 2 PLACES | ± 0.20 | ± --- | 1 PLACE | ± --- | ± --- | 0 PLACE | ± --- | ± --- | DIMENSION STYLE MM ONLY DRAWN BY: EKSOH DATE: 2014/10/29 CHECKED BY: CGTAN DATE: 2014/12/18 APPROVED BY: SHLENI DATE: 2014/12/18 | SCALE: NTS DESIGN UNITS: METRIC THIRD ANGLE PROJECTION |
|--|---|---|---|--------------|------|----------|-------|-------|----------|-------|-------|----------|--------|-------|---------|-------|-------|---------|-------|-------|--|--|
| | | mm | INCH | | | | | | | | | | | | | | | | | | | |
| | 4 PLACES | ± --- | ± --- | | | | | | | | | | | | | | | | | | | |
| | 3 PLACES | ± --- | ± --- | | | | | | | | | | | | | | | | | | | |
| 2 PLACES | ± 0.20 | ± --- | | | | | | | | | | | | | | | | | | | | |
| 1 PLACE | ± --- | ± --- | | | | | | | | | | | | | | | | | | | | |
| 0 PLACE | ± --- | ± --- | | | | | | | | | | | | | | | | | | | | |
| MATERIAL NO. | DRAFT WHERE APPLICABLE MUST REMAIN WITHIN DIMENSIONS | SEE TABLE | TITLE: DDR4 DIMM, 0.85MM PITCH 288CKTS, VERT. SMT (TAB) | molex | | | | | | | | | | | | | | | | | | |
| DOCUMENT NO. SD-78730-003 | SHEET NO. 3 OF 5 | THIS DRAWING CONTAINS INFORMATION THAT IS PROPRIETARY TO MOLEX INCORPORATED AND SHOULD NOT BE USED WITHOUT WRITTEN PERMISSION | | | | | | | | | | | | | | | | | | | | |
| SIZE: A3 | | | | | | | | | | | | | | | | | | | | | | |




RECOMMENDED PCB THICKNESS: 1.57MM TO 3.18MM

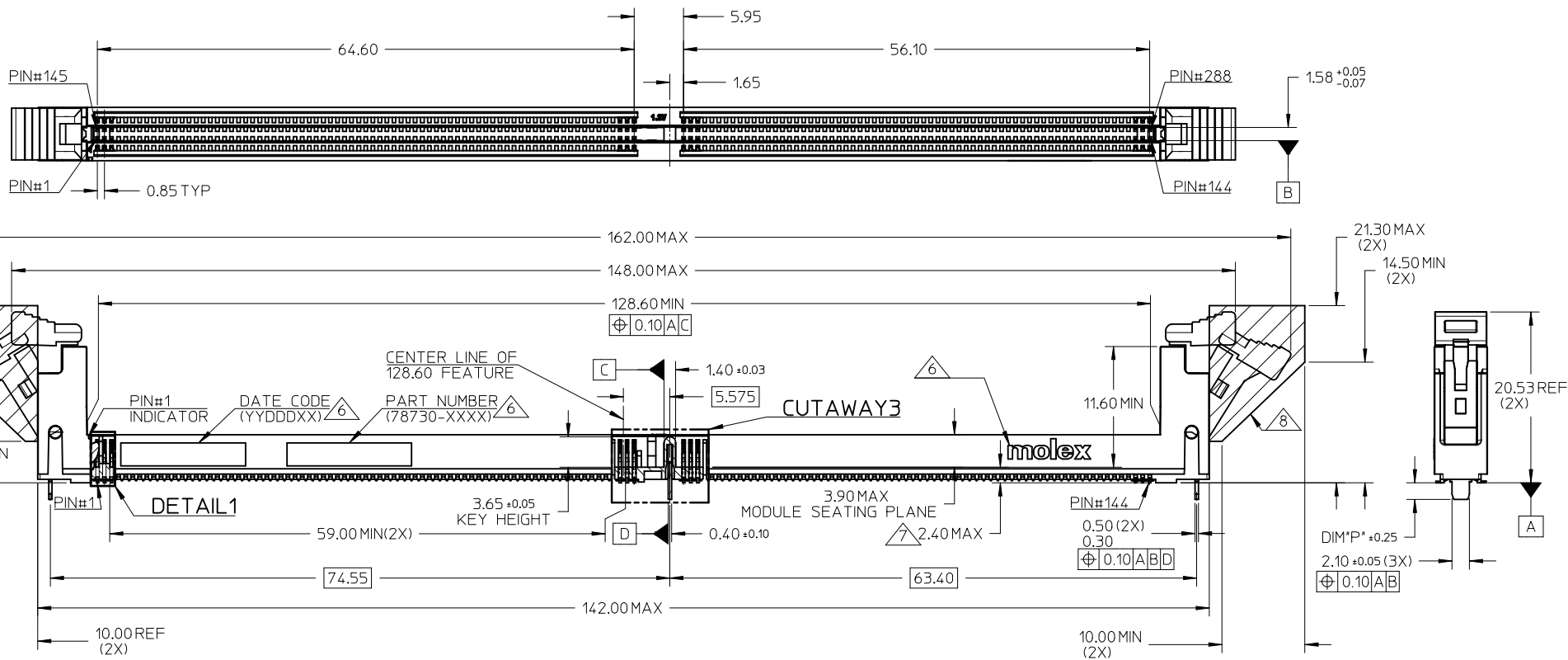
THIS DESIGN IS BASED ON DESIGN OBJECTIVES AND IS STRICTLY TENTATIVE. IT MAY CHANGE BASED ON RESULTS OF ADDITIONAL DESIGN REVIEWS AND VERIFICATIONS.

| | | | | | | | | | |
|--|---|---|--|--|--------------------|---|-------------------------------|-------------------------------|--|
| ADD NEW PN EC NO: S2017-0584 DRW: EKS0H 2017/05/03 CHKD: CGTAN 2017/05/19 APPR: SHLENI 2017/05/19 | QUALITY SYMBOLS $F_A=0$ $F_G=0$ $F_P=0$ | GENERAL TOLERANCES (UNLESS SPECIFIED) | | DIMENSION STYLE MM ONLY | | SCALE NTS | DESIGN UNITS METRIC | THIRD ANGLE PROJECTION | |
| | | 4 PLACES ± --- ± --- 3 PLACES ± --- ± --- 2 PLACES ± 0.20 ± --- 1 PLACE ± --- ± --- 0 PLACE ± --- ± --- | mm INCH ± --- ± --- ± 0.20 ± --- ± --- ± --- ± --- ± --- | DRAWN BY EKS0H | DATE 2014/10/29 | TITLE DDR4 DIMM, 0.85MM PITCH 288CKTS, VERT. SMT (TAB) | | | |
| | | DRAFT WHERE APPLICABLE MUST REMAIN WITHIN DIMENSIONS | | CHECKED BY CGTAN | DATE 2014/12/18 | | | | |
| | | | | APPROVED BY SHLENI | DATE 2014/12/18 | MATERIAL NO. SEE TABLE | DOCUMENT NO. SD-78730-003 | SHEET NO. 4 OF 5 | |

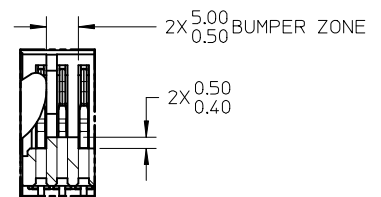
| CKT SIZE | ASSEMBLY PART NO. | HOUSING COLOUR | LATCH COLOUR | P&P OPTION | DIM*P* | PLATING OPTION | | PRODUCT SPEC. NO. | PACKAGING SPEC. NO. | |
|------------|-------------------|----------------|--------------|------------|--------|--|--|-------------------|---------------------|-----|
| | | | | | | TERMINAL | METAL TAB | | | |
| 288 | 78730-1502 | BLACK | BLACK | NO | 2.00 | 0.76 MICROMETER (30 MICROINCH) MIN GOLD ON CONTACT 2.54 MICROMETER (100 MICROINCH) MIN TIN ON SOLDER TAILS | 1 MICROMETER (40 MICROINCH) MIN TIN OVERALL (PRE-PLATED) | PS-78730-001 | | |
| | 78730-1503 | | OFF-WHITE | | | | | | | |
| | 78730-1504 | OFF-WHITE | BLACK | | | | | | | |
| | 78730-1505 | | OFF-WHITE | | | | | | | |
| | 78730-1506 | BLUE | BLACK | | | | | | | |
| | 78730-1507 | | OFF-WHITE | | | | | | | |
| | 78730-2502 | BLACK | BLACK | YES | 1.50 | 0.38 MICROMETER (15 MICROINCH) MIN GOLD ON CONTACT 2.54 MICROMETER (100 MICROINCH) MIN TIN ON SOLDER TAILS | 1 MICROMETER (40 MICROINCH) MIN TIN OVERALL (PRE-PLATED) | PS-78730-002 | | |
| | 78730-2503 | | OFF-WHITE | | | | | | | |
| | 78730-2504 | OFF-WHITE | BLACK | | | | | | | |
| | 78730-2505 | | OFF-WHITE | | | | | | | |
| | 78730-2506 | BLUE | BLACK | YES | 2.00 | 1.27 MICROMETER (50 MICROINCH) MIN NICKEL UNDERPLATE | 1 MICROMETER (40 MICROINCH) MIN TIN OVERALL (PRE-PLATED) | PS-78730-002 | PK-78730-001 | |
| | 78730-2507 | | OFF-WHITE | | | | | | | |
| | 78730-1853 | BLACK | OFF-WHITE | | | | | | | NO |
| | 78730-1857 | BLUE | | | | | | | | YES |
| | 78730-2853 | BLACK | | | | | | | | NO |
| | 78730-2857 | BLUE | | | | | | | | YES |
| | 78730-1653 | BLACK | | NO | 2.00 | | | | | |
| | 78730-2653 | | | YES | 2.00 | | | | | |
| | 78730-1658 | YELLOW | NO | 1.50 | | | | | | |
| | 78730-1858 | | 2.00 | | | | | | | |
| 78730-2658 | 1.50 | | | | | | | | | |
| 78730-2858 | 2.00 | | | | | | | | | |
| 78730-3653 | BLACK | YES | 1.50 | | | | | | | |
| 78730-3658 | YELLOW | YES | 2.00 | | | | | | | |

THIS DESIGN IS BASED ON DESIGN OBJECTIVES AND IS STRICTLY TENTATIVE. IT MAY CHANGE BASED ON RESULTS OF ADDITIONAL DESIGN REVIEWS AND VERIFICATIONS.

| | | | | | | | | | | | |
|---|--|---------------------------------------|--|----------------------------|---|--------------------|---|------------------------|-----------|--|--|
| ADD NEW PN EC NO: S2017-0584 DRW: EKSOH 2017/05/03 CHKD: CGTAN 2017/05/19 APPR: SHLENI 2017/05/19 | QUALITY SYMBOLS $F_A=0$ $F_G=0$ $F_P=0$ | GENERAL TOLERANCES (UNLESS SPECIFIED) | | DIMENSION STYLE MM ONLY | | SCALE NTS | DESIGN UNITS METRIC | THIRD ANGLE PROJECTION | | | |
| | | | mm | INCH | DRAWN BY EKSOH | DATE 2014/10/29 | TITLE DDR4 DIMM, 0.85MM PITCH 288CKTS, VERT. SMT (TAB) | | | | |
| | | 4 PLACES | ± --- | ± --- | CHECKED BY CGTAN | DATE 2014/12/18 |  | | | | |
| | | 3 PLACES | ± --- | ± --- | APPROVED BY SHLENI | DATE 2014/12/18 | | | | | |
| | | 2 PLACES | ± 0.20 | ± --- | MATERIAL NO. | | DOCUMENT NO. | | SHEET NO. | | |
| | | 1 PLACE | ± --- | ± --- | SEE TABLE | | SD-78730-003 | | 5 OF 5 | | |
| 0 PLACE | ± --- | ± --- | DRAFT WHERE APPLICABLE MUST REMAIN WITHIN DIMENSIONS | | THIS DRAWING CONTAINS INFORMATION THAT IS PROPRIETARY TO MOLEX INCORPORATED AND SHOULD NOT BE USED WITHOUT WRITTEN PERMISSION | | | | | | |

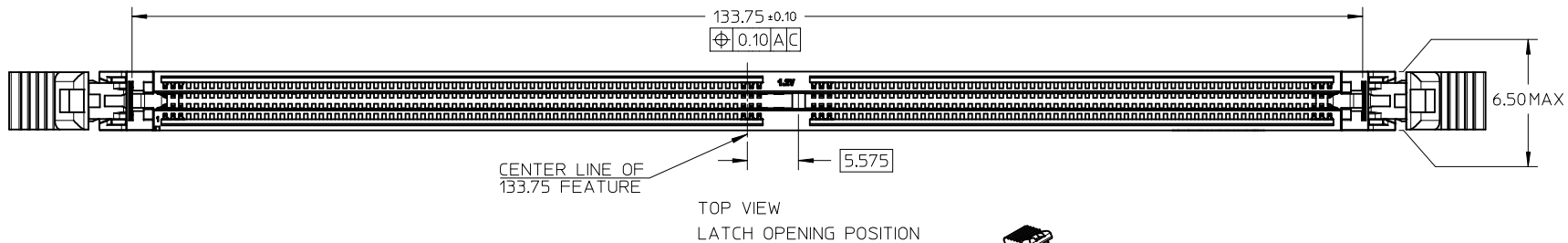


- NOTES:
- MATERIAL : HOUSING - HALOGEN FREE HIGH TEMP POLYAMIDE, GLASS FILLED, UL94V-0, COLOUR : SEE TABLE ON SHEET 5. LATCH - HALOGEN FREE HIGH TEMP POLYAMIDE, GLASS FILLED, UL94V-0, COLOUR : SEE TABLE ON SHEET 5. TERMINAL : COPPER ALLOY. METALTAB: COPPER ALLOY.
 - FINISHES - SEE TABLE ON SHEET 5.
 - PRODUCT SPECIFICATION : SEE TABLE ON SHEET 5.
 - PACKAGING SPECIFICATION: PRODUCT SHALL BE PACKED IN TRAY, SEE SHEET 5
 - CARD SLOT ACCEPTS 1.40 \pm 0.10MM MODULE THICKNESS (MEASURED OVER P.C. PADS).
 - MOLEX LOGO, DATE & PART NO. INDICATED ON HOUSING.
 - MODULE SEATING PLANE.
 - KEEP OUT ZONE RESERVED FOR LATCH.
 - KEEP OUT AREA IS THE AREA WHERE THE CONNECTOR (INCLUDES LATCHES IN OPENING POSITION) IS MOUNTED ON THE PCB.
 - REFER TO AS-78730-001 FOR CONNECTOR APPLICATION GUIDELINE.
 - REFER TO AS-78730-002 FOR PCB ROUTING RECOMMENDATIONS.

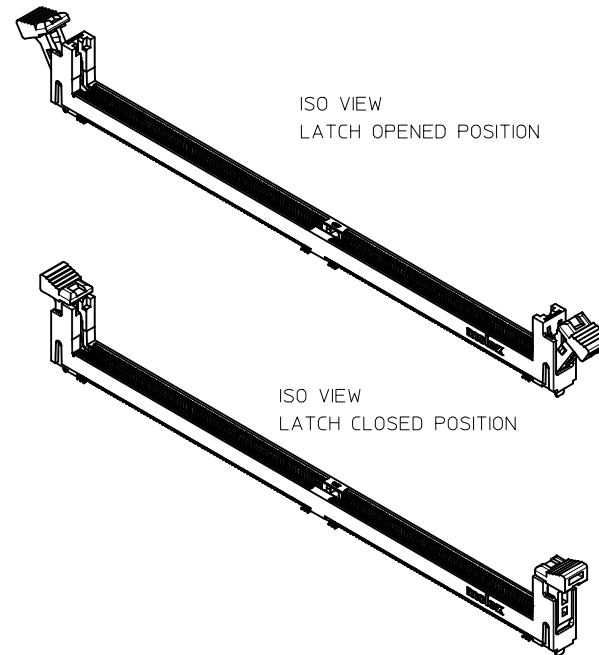
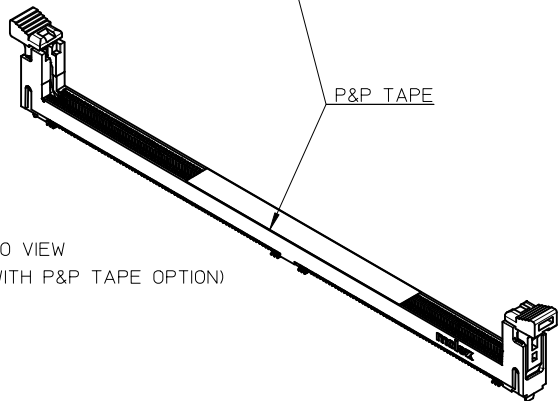
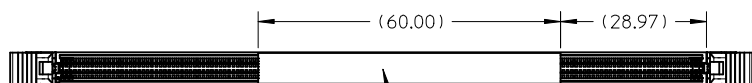


THIS DESIGN IS BASED ON DESIGN OBJECTIVES AND IS STRICTLY TENTATIVE. IT MAY CHANGE BASED ON RESULTS OF ADDITIONAL DESIGN REVIEWS AND VERIFICATIONS.

| | | | | | | | | | | |
|--|--|--|-----------|---|--------------------|---|------------------------|------------------------|--|--|
| ADD NEW PN EC NO: S2017-0584 DRW:EKSOH 2017/05/03 CHKD:CGTAN 2017/05/19 APPR:SHLENI 2017/05/19 | QUALITY SYMBOLS $F_A=0$ $F_C=0$ $F_B=0$ | GENERAL TOLERANCES (UNLESS SPECIFIED) | | DIMENSION STYLE MM ONLY | | SCALE NTS | DESIGN UNITS METRIC | THIRD ANGLE PROJECTION | | |
| | | mm | INCH | DRAWN BY EKSOH | DATE 2014/10/29 | TITLE DDR4 DIMM, 0.85MM PITCH 288CKTS,VERT.SMT (TAB) | | | | |
| | | 4 PLACES \pm --- | \pm --- | CHECKED BY CGTAN | DATE 2014/12/18 | molex DOCUMENT NO. SD-78730-003 SHEET NO. 1 OF 5 | | | | |
| | | 3 PLACES \pm --- | \pm --- | APPROVED BY SHLENI | DATE 2014/12/18 | | | | | |
| 2 PLACES ± 0.20 | \pm --- | MATERIAL NO. | | SEE TABLE | | | | | | |
| 1 PLACE \pm --- | \pm --- | ANGULAR $\pm 3^\circ$ | | THIS DRAWING CONTAINS INFORMATION THAT IS PROPRIETARY TO MOLEX INCORPORATED AND SHOULD NOT BE USED WITHOUT WRITTEN PERMISSION | | | | | | |
| 0 PLACE \pm --- | \pm --- | DRAFT WHERE APPLICABLE MUST REMAIN WITHIN DIMENSIONS | | SIZE A3 | | | | | | |

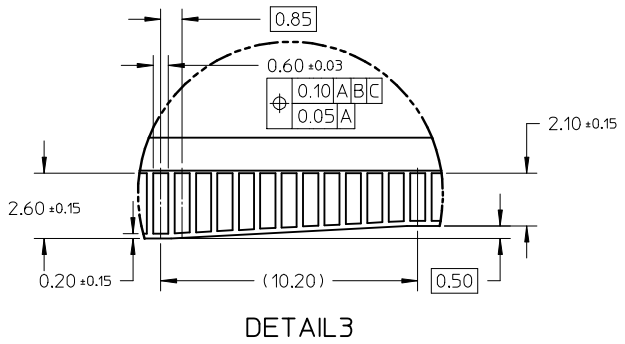
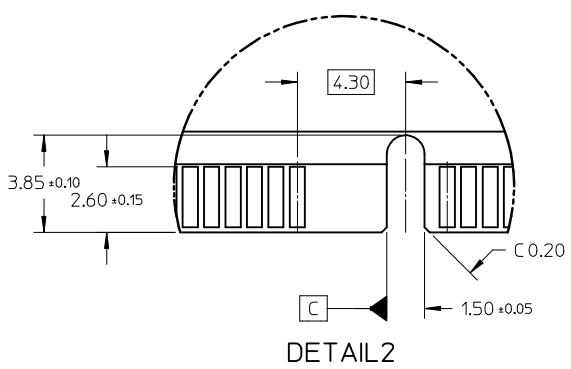
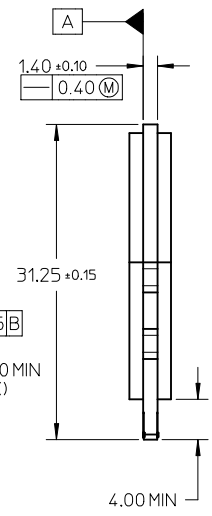
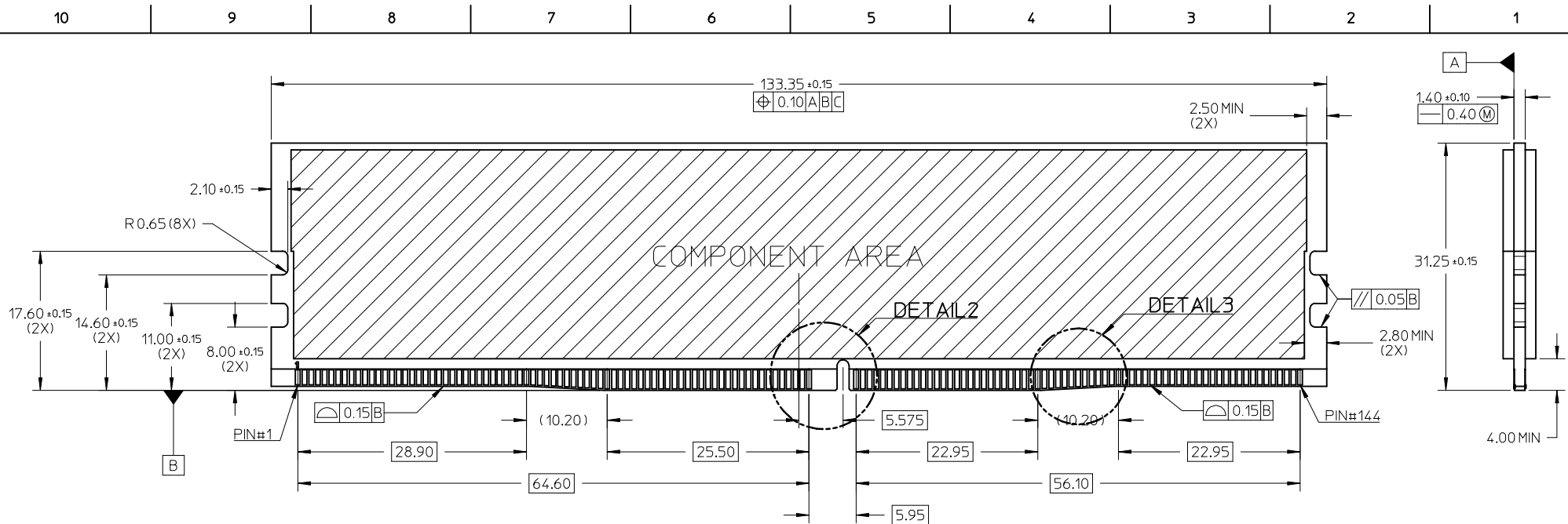


VIEWS WITH P&P TAPE OPTION



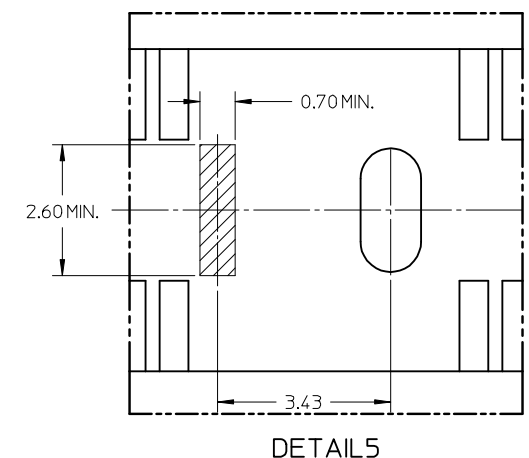
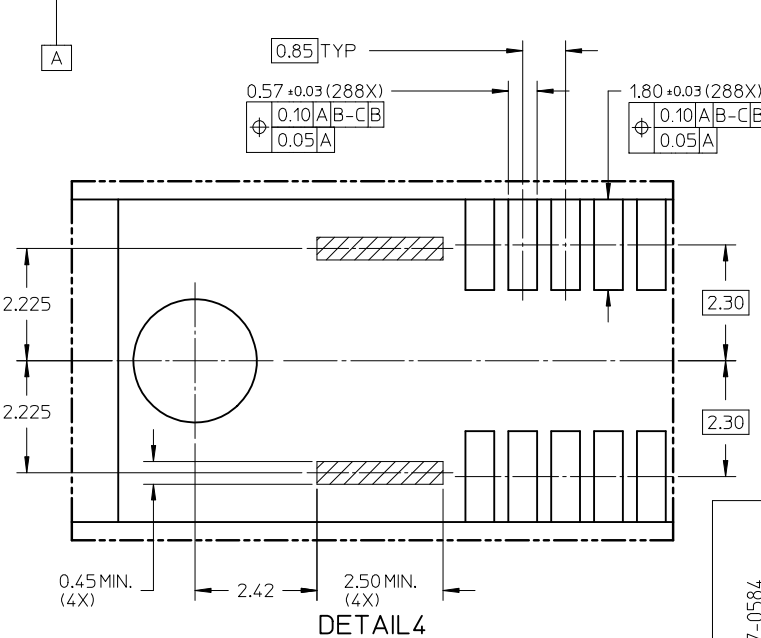
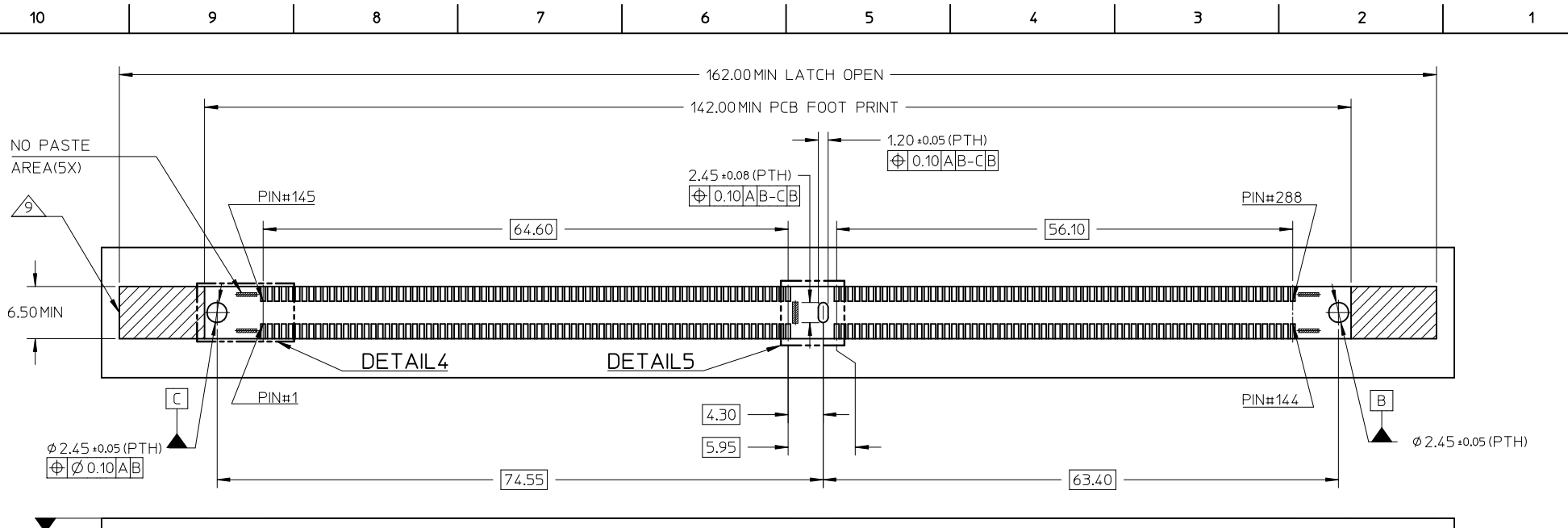
THIS DESIGN IS BASED ON DESIGN OBJECTIVES AND IS STRICTLY TENTATIVE. IT MAY CHANGE BASED ON RESULTS OF ADDITIONAL DESIGN REVIEWS AND VERIFICATIONS.

| | | | | | | | | | | |
|--|---|--|--------------|----------------------------|--------------------|---|------------------------|------------------------|--|--|
| ADD NEW PN EC NO: S2017-0584 DRW:EKSOH 2017/05/03 CHKD:CGTAN 2017/05/19 APPR:SHLENI 2017/05/19 | QUALITY SYMBOLS $\nabla_A=0$ $\nabla_C=0$ $\nabla_P=0$ | GENERAL TOLERANCES (UNLESS SPECIFIED) | | DIMENSION STYLE MM ONLY | | SCALE NTS | DESIGN UNITS METRIC | THIRD ANGLE PROJECTION | | |
| | | 4 PLACES ± --- ± --- | mm INCH | DRAWN BY EKSOH | DATE 2014/10/29 | TITLE DDR4 DIMM, 0.85MM PITCH 288CKTS,VERT.SMT (TAB) | | | | |
| | | 3 PLACES ± --- ± --- | ± 0.20 ± --- | CHECKED BY CGTAN | DATE 2014/12/18 | DOCUMENT NO. SD-78730-003 | | | | |
| | | 2 PLACES ± --- ± --- | ± --- ± --- | APPROVED BY SHLENI | DATE 2014/12/18 | SHEET NO. 2 OF 5 | | | | |
| 1 PLACE ± --- ± --- | ± --- ± --- | MATERIAL NO. | | SEE TABLE | | THIS DRAWING CONTAINS INFORMATION THAT IS PROPRIETARY TO MOLEX INCORPORATED AND SHOULD NOT BE USED WITHOUT WRITTEN PERMISSION | | | | |
| 0 PLACE ± --- ± --- | ANGULAR ± 3 ° | DRAFT WHERE APPLICABLE MUST REMAIN WITHIN DIMENSIONS | | | | | | | | |



THIS DESIGN IS BASED ON DESIGN OBJECTIVES AND IS STRICTLY TENTATIVE. IT MAY CHANGE BASED ON RESULTS OF ADDITIONAL DESIGN REVIEWS AND VERIFICATIONS.

| ADD NEW PN EC NO: S2017-0584 DRW: EKSOH 2017/05/03 CHKD: CGTAN 2017/05/19 APPR: SHLENI 2017/05/19 | QUALITY SYMBOLS $\nabla_A = 0$ $\nabla_C = 0$ $\nabla_B = 0$ | GENERAL TOLERANCES (UNLESS SPECIFIED) <table border="1"> <thead> <tr> <th></th> <th>mm</th> <th>INCH</th> </tr> </thead> <tbody> <tr> <td>4 PLACES</td> <td>± ---</td> <td>± ---</td> </tr> <tr> <td>3 PLACES</td> <td>± ---</td> <td>± ---</td> </tr> <tr> <td>2 PLACES</td> <td>± 0.20</td> <td>± ---</td> </tr> <tr> <td>1 PLACE</td> <td>± ---</td> <td>± ---</td> </tr> <tr> <td>0 PLACE</td> <td>± ---</td> <td>± ---</td> </tr> </tbody> </table> | | mm | INCH | 4 PLACES | ± --- | ± --- | 3 PLACES | ± --- | ± --- | 2 PLACES | ± 0.20 | ± --- | 1 PLACE | ± --- | ± --- | 0 PLACE | ± --- | ± --- | DIMENSION STYLE MM ONLY DRAWN BY: EKSOH DATE: 2014/10/29 CHECKED BY: CGTAN DATE: 2014/12/18 APPROVED BY: SHLENI DATE: 2014/12/18 | SCALE: NTS DESIGN UNITS: METRIC THIRD ANGLE PROJECTION |
|--|---|---|--------------|--------------------------------------|------|----------|-------|-------|----------|-------|-------|----------|--------|-------|---------|-------|-------|---------|-------|-------|--|--|
| | | mm | INCH | | | | | | | | | | | | | | | | | | | |
| | 4 PLACES | ± --- | ± --- | | | | | | | | | | | | | | | | | | | |
| | 3 PLACES | ± --- | ± --- | | | | | | | | | | | | | | | | | | | |
| 2 PLACES | ± 0.20 | ± --- | | | | | | | | | | | | | | | | | | | | |
| 1 PLACE | ± --- | ± --- | | | | | | | | | | | | | | | | | | | | |
| 0 PLACE | ± --- | ± --- | | | | | | | | | | | | | | | | | | | | |
| MATERIAL NO.: SEE TABLE | DRAFT WHERE APPLICABLE MUST REMAIN WITHIN DIMENSIONS | TITLE: DDR4 DIMM, 0.85MM PITCH 288CKTS, VERT. SMT (TAB) | molex | DOCUMENT NO.: SD-78730-003 | | | | | | | | | | | | | | | | | | |
| SIZE: A3 | THIS DRAWING CONTAINS INFORMATION THAT IS PROPRIETARY TO MOLEX INCORPORATED AND SHOULD NOT BE USED WITHOUT WRITTEN PERMISSION | SHEET NO.: 3 OF 5 | | | | | | | | | | | | | | | | | | | | |
| REV: 6 | | | | | | | | | | | | | | | | | | | | | | |




RECOMMENDED PCB THICKNESS: 1.57MM TO 3.18MM

THIS DESIGN IS BASED ON DESIGN OBJECTIVES AND IS STRICTLY TENTATIVE. IT MAY CHANGE BASED ON RESULTS OF ADDITIONAL DESIGN REVIEWS AND VERIFICATIONS.

| ADD NEW PN EC NO: S2017-0584 DRW: EKS0H 2017/05/03 CHKD: CGTAN 2017/05/19 APPR: SHLENI 2017/05/19 | QUALITY SYMBOLS $F_A=0$ $F_G=0$ $F_P=0$ | GENERAL TOLERANCES (UNLESS SPECIFIED) | | DIMENSION STYLE MM ONLY | | SCALE NTS | DESIGN UNITS METRIC | THIRD ANGLE PROJECTION | | | | | | | | | | | | | | | | | | | |
|--|---|--|--------------------|--|--------------------|------------------------------|-------------------------------|-------------------------------|-------|----------|-------|-------|----------|--------|-------|---------|-------|-------|---------|-------|-------|-------------------|--------------------|---|--|--|--|
| | | <table border="1"> <thead> <tr> <th></th> <th>mm</th> <th>INCH</th> </tr> </thead> <tbody> <tr> <td>4 PLACES</td> <td>± ---</td> <td>± ---</td> </tr> <tr> <td>3 PLACES</td> <td>± ---</td> <td>± ---</td> </tr> <tr> <td>2 PLACES</td> <td>± 0.20</td> <td>± ---</td> </tr> <tr> <td>1 PLACE</td> <td>± ---</td> <td>± ---</td> </tr> <tr> <td>0 PLACE</td> <td>± ---</td> <td>± ---</td> </tr> </tbody> </table> | | | mm | INCH | 4 PLACES | ± --- | ± --- | 3 PLACES | ± --- | ± --- | 2 PLACES | ± 0.20 | ± --- | 1 PLACE | ± --- | ± --- | 0 PLACE | ± --- | ± --- | DRAWN BY EKS0H | DATE 2014/10/29 | TITLE DDR4 DIMM, 0.85MM PITCH 288CKTS, VERT. SMT (TAB) | | | |
| | | | mm | INCH | | | | | | | | | | | | | | | | | | | | | | | |
| | | 4 PLACES | ± --- | ± --- | | | | | | | | | | | | | | | | | | | | | | | |
| 3 PLACES | ± --- | ± --- | | | | | | | | | | | | | | | | | | | | | | | | | |
| 2 PLACES | ± 0.20 | ± --- | | | | | | | | | | | | | | | | | | | | | | | | | |
| 1 PLACE | ± --- | ± --- | | | | | | | | | | | | | | | | | | | | | | | | | |
| 0 PLACE | ± --- | ± --- | | | | | | | | | | | | | | | | | | | | | | | | | |
| DRAFT WHERE APPLICABLE MUST REMAIN WITHIN DIMENSIONS | | CHECKED BY CGTAN | DATE 2014/12/18 | | | | | | | | | | | | | | | | | | | | | | | | |
| REV 6 | DESCRIPTION ADD NEW PN | MATERIAL NO. SEE TABLE | | APPROVED BY SHLENI | DATE 2014/12/18 | DOCUMENT NO. SD-78730-003 | SHEET NO. 4 OF 5 | | | | | | | | | | | | | | | | | | | | |

| CKT SIZE | ASSEMBLY PART NO. | HOUSING COLOUR | LATCH COLOUR | P&P OPTION | DIM*P* | PLATING OPTION | | PRODUCT SPEC. NO. | PACKAGING SPEC. NO. | |
|------------|-------------------|----------------|--------------|------------|--------|--|--|-------------------|---------------------|-----|
| | | | | | | TERMINAL | METAL TAB | | | |
| 288 | 78730-1502 | BLACK | BLACK | NO | 2.00 | 0.76 MICROMETER (30 MICROINCH) MIN GOLD ON CONTACT 2.54 MICROMETER (100 MICROINCH) MIN TIN ON SOLDER TAILS | 1 MICROMETER (40 MICROINCH) MIN TIN OVERALL (PRE-PLATED) | PS-78730-001 | PK-78730-001 | |
| | 78730-1503 | | OFF-WHITE | | | | | | | |
| | 78730-1504 | OFF-WHITE | BLACK | | | | | | | |
| | 78730-1505 | | OFF-WHITE | | | | | | | |
| | 78730-1506 | BLUE | BLACK | | | | | | | |
| | 78730-1507 | | OFF-WHITE | | | | | | | |
| | 78730-2502 | BLACK | BLACK | YES | 1.50 | 0.38 MICROMETER (15 MICROINCH) MIN GOLD ON CONTACT 2.54 MICROMETER (100 MICROINCH) MIN TIN ON SOLDER TAILS | 1 MICROMETER (40 MICROINCH) MIN TIN OVERALL (PRE-PLATED) | PS-78730-002 | PK-78730-002 | |
| | 78730-2503 | | OFF-WHITE | | | | | | | |
| | 78730-2504 | OFF-WHITE | BLACK | | | | | | | |
| | 78730-2505 | | OFF-WHITE | | | | | | | |
| | 78730-2506 | BLUE | BLACK | YES | 2.00 | 1.27 MICROMETER (50 MICROINCH) MIN NICKEL UNDERPLATE | 1 MICROMETER (40 MICROINCH) MIN TIN OVERALL (PRE-PLATED) | PS-78730-002 | PK-78730-002 | |
| | 78730-2507 | | OFF-WHITE | | | | | | | |
| | 78730-1853 | BLACK | OFF-WHITE | | | | | | | NO |
| | 78730-1857 | BLUE | | | | | | | | YES |
| | 78730-2853 | BLACK | | | | | | | | NO |
| | 78730-2857 | BLUE | | | | | | | | YES |
| | 78730-1653 | BLACK | | NO | | | | | | |
| | 78730-2653 | | | YES | | | | | | |
| | 78730-1658 | YELLOW | NO | | | | | | | |
| | 78730-1858 | | 1.50 | | | | | | | |
| 78730-2658 | 2.00 | | | | | | | | | |
| 78730-2858 | 1.50 | | | | | | | | | |
| 78730-3653 | BLACK | YELLOW | YES | 2.00 | | | | | | |
| 78730-3658 | YELLOW | | | | | | | | | |

THIS DESIGN IS BASED ON DESIGN OBJECTIVES AND IS STRICTLY TENTATIVE. IT MAY CHANGE BASED ON RESULTS OF ADDITIONAL DESIGN REVIEWS AND VERIFICATIONS.

| | | | | | | | | | | | |
|---|--|---------------------------------------|--|----------------------------|---|--------------------|---|------------------------|-----------|--|--|
| ADD NEW PN EC NO: S2017-0584 DRW: EKSOH 2017/05/03 CHKD: CGTAN 2017/05/19 APPR: SHLENI 2017/05/19 | QUALITY SYMBOLS $F_A=0$ $F_G=0$ $F_P=0$ | GENERAL TOLERANCES (UNLESS SPECIFIED) | | DIMENSION STYLE MM ONLY | | SCALE NTS | DESIGN UNITS METRIC | THIRD ANGLE PROJECTION | | | |
| | | | mm | INCH | DRAWN BY EKSOH | DATE 2014/10/29 | TITLE DDR4 DIMM, 0.85MM PITCH 288CKTS, VERT. SMT (TAB) | | | | |
| | | 4 PLACES | ± --- | ± --- | CHECKED BY CGTAN | DATE 2014/12/18 |  | | | | |
| | | 3 PLACES | ± --- | ± --- | APPROVED BY SHLENI | DATE 2014/12/18 | | | | | |
| | | 2 PLACES | ± 0.20 | ± --- | MATERIAL NO. | | DOCUMENT NO. | | SHEET NO. | | |
| | | 1 PLACE | ± --- | ± --- | SEE TABLE | | SD-78730-003 | | 5 OF 5 | | |
| 0 PLACE | ± --- | ± --- | DRAFT WHERE APPLICABLE MUST REMAIN WITHIN DIMENSIONS | | THIS DRAWING CONTAINS INFORMATION THAT IS PROPRIETARY TO MOLEX INCORPORATED AND SHOULD NOT BE USED WITHOUT WRITTEN PERMISSION | | | | | | |