

Distributed by:

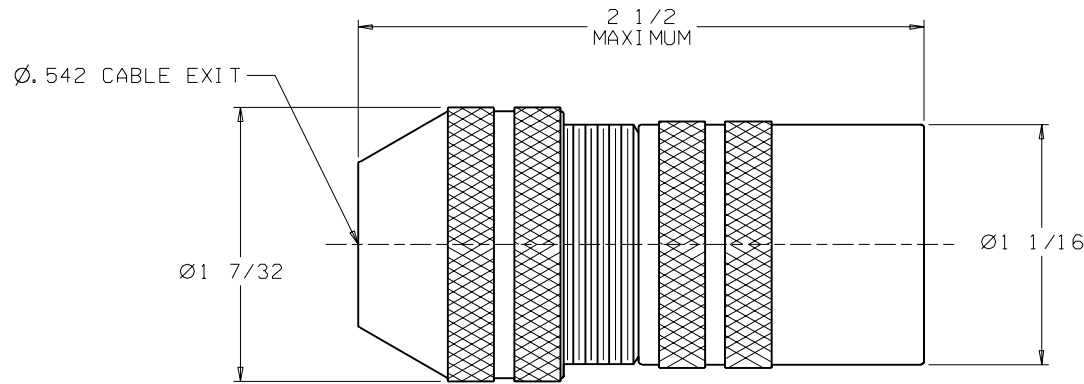
JAMECO[®]
ELECTRONICS

www.Jameco.com ♦ 1-800-831-4242

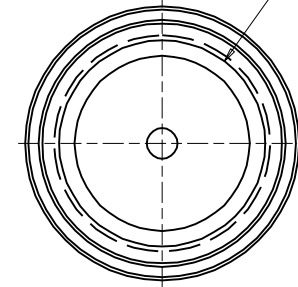
The content and copyrights of the attached
material are the property of its owner.

Jameco Part Number 803014

REV	DATE	ECN NO.	APPVD BY	REL BY
G	12-28-98	UM9-0238 UPDATED REVISION	FVW	
H	11-3-99	UM2000-0319 REFORMATTED		



15/16-20 UNEF-2B

1.0 RECOGNIZED AGENCY APPROVALS:

CSA CERTIFICATION AND UL RECOGNITION IS PLANNED.

2.0 MECHANICAL SPECIFICATIONS:MATERIAL:BACKSHELL, COMPRESSION NUT, AND CONE: GLASS REINFORCED NYLON
SEALS: RUBBER3.0 CABLE SECUREMENT

- 3.1 EACH CABLE BACKSHELL WHEN ASSEMBLED WITH THE SMALLEST DIAMETER CABLE IN THE SPECIFIED RANGE WILL BE CAPABLE OF SURVIVING A DEAD WEIGHT PULL OF 35 LBS. FOR 1 MINUTE PER UL-STD-514.
- 3.2 EACH CABLE BACKSHELL WHEN ASSEMBLED WITH MIDPOINT OF THE RANGE CABLE WILL BE CAPABLE OF A DEAD WEIGHT PULL OF 50 LBS. FOR 1 MINUTE PER UL-STD-514.

4.0 ENVIRONMENTAL SPECIFICATIONS:

- 4.1 RAIN TIGHT: THE BACKSHELL WHEN ASSEMBLED WITH THE PROPER CABLE AND CONNECTOR WILL MEET THE RAIN TEST REQUIREMENT DEFINED IN UL-STD-514.

TEMPERATURE RATING: -40 DEGREES C TO +90 DEGREES C.

- 4.2 SALT SPRAY: 500 HOUR SALT SPRAY PER MIL-STD-1344 METHOD 1001.

QUALITY SYMBOLS MAJOR ▼ = CRITICAL ▽ = SPC S =	UNLESS SPECIFIED: ALL DIMENSIONS IN INCHES	SCALE 2:1	DWG SIZE B	THIRD ANGLE PROJECTION	REVISE ON CAD ONLY
	GENERAL TOLERANCES: 3 PLACE ±.005 2 PLACE ±.01 ANGULAR ±2°	DRAWN BY & DATE CLC 8-18-92	CHECKED BY & DATE DW 8-18-92	APPROVED BY & DATE DW 8-18-92	TITLE: CABLE BACKSHELL, 15/16"-20 UNEF, .300/.525
	Util-Mate CAGE CODE 58967			Molex PART NO. 849700010	MOLEX INCORPORATED Orange, CA 92868 DRAWING NO. SD-84970-0010 SHEET NO. 1 OF 1
		THIS DRAWING CONTAINS INFORMATION THAT IS PROPRIETARY TO MOLEX INCORPORATED AND SHOULD NOT BE USED WITHOUT WRITTEN PERMISSION.			REV H