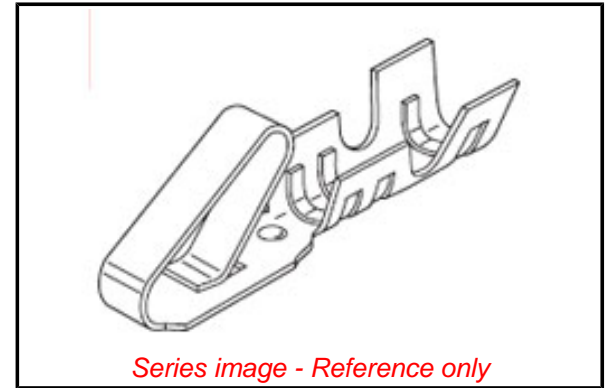


**Part Number:** [0008500114](#)  
**Status:** **Active**  
**Overview:** [KK®](#)  
**Description:** [KK® Crimp Terminal, 22-30 AWG, Bag, Hot Tin \(Sn\) Dip, Nickel \(Ni\) Under Plating](#)



#### General

Product Family	Crimp Terminals
Series	<a href="#">2759</a>
Overview	<a href="#">KK®</a>
Product Name	KK®

#### Physical

Gender	Female
Material - Metal	Brass
Material - Plating Mating	Tin
Material - Plating Termination	Tin
Packaging Type	Bag
Plating min: Mating (µin)	100
Plating min: Mating (µm)	2.50
Plating min: Termination (µin)	100
Plating min: Termination (µm)	2.50
Termination Interface: Style	Crimp or Compression
Wire Insulation Diameter	1.57mm (.062") max.
Wire Size AWG	22
Wire Size AWG	24
Wire Size AWG	26
Wire Size AWG	28
Wire Size AWG	30
Wire Size mm²	N/A

#### Material Info

Old Part Number	2759-(P909)L
-----------------	--------------

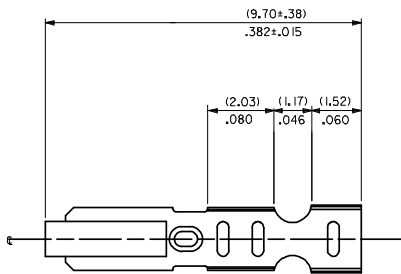
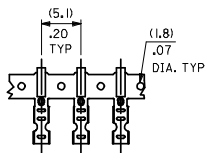
#### EU RoHS

**ELV and RoHS  
Compliant**

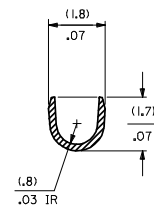
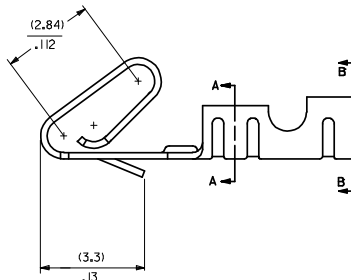
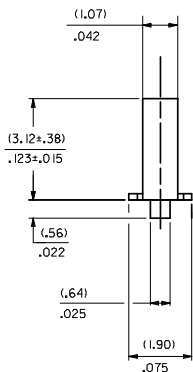
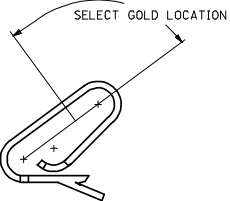
#### China RoHS



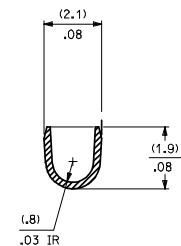
CARRIER VIEW



- NOTES
- MATERIAL  
(0.203±0.010)/.0080±.0004 THICK BRASS
  - FINISH  
102 - OVERALL TIN: (0.00508)/.000200 MIN. TIN OVER (0.00254)/.000100 MIN. COPPER  
122 - OVERALL TIN: (0.00381)/.000150 MIN. TIN OVER (0.00076)/.000030 MIN. NICKEL  
#P909 - OVERALL HOT TIN DIP (0.00254)/.000100 MIN.  
550 - SELECT GOLD (0.00038)/.000015 MIN. OVERALL GOLD FLASH (0.00005)/.000002 MIN. OVERALL NICKEL UNDERPLATE: (0.00076)/.000030 MIN.  
555- SELECT GOLD (0.00038)/.000015 MIN. OVERALL NICKEL UNDERPLATE: (0.00076)/.000030  
558 - SELECT GOLD: (0.00076)/.000030 MIN. OVERALL GOLD FLASH (0.00005)/.000002 MIN. OVERALL NICKEL UNDERPLATE: (0.00127)/.000050 MIN.  
\*THE PRIMARY SHIPPING CARTON WILL BE LABELED "COMPLIANT TO RoHS DIRECTIVE 2002/95/EC AND ELV ANNEX II OF DIRECTIVE 2000/53/EC." CARTONS WITHOUT THIS LABEL MAY CONTAIN PRODUCT WITH TIN-LEAD PLATING.
  - PRODUCT SPEC: PS-10-07
  - PACKAGING SPECIFICATION: NONE
  - CRIMP IS FOR 22-30 GA WIRE WITH (1.57)/.062 DIA INSULATION MAX.
  - INSERTION FORCE OF TERMINAL INTO (2.54)/.100 CENTERLINE CONNECTOR IS 2.5 LBS. MAX
  - TERMINALS WILL RETAIN 8 LBS PULL FOR 1 MIN. IN A (2.54)/.100 CENTERLINE HOUSING.
  - DIMENSIONS GIVEN ACROSS CENTERLINES ARE SYMMETRICAL ABOUT THOSE CENTERLINES WITHIN HALF THE TOTAL TOLERANCE.
  - CODE LETTER PRECEDING PART NO. DESIGNATES MANUFACTURING LOCATION.  
I=IRELAND
  - THIS PART CONFORMS TO CLASS B REQUIREMENTS OF COSMETIC SPECIFICATION PS-45499-002.

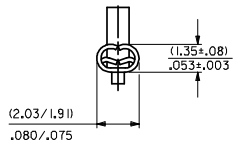


SECTION A-A  
BACKGROUND OMITTED

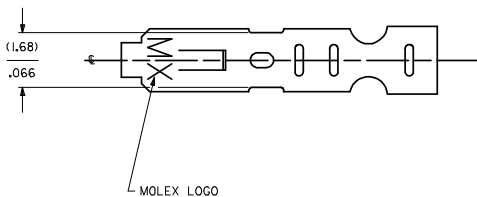


SECTION B-B  
BACKGROUND OMITTED

CRIMP DETAIL



CRIMPED TERMINAL 2759-(P90)LC IS USED WITHOUT WIRE AND IS INSERTED INTO HOUSING TO PROVIDE TENSION WHEN ASSEMBLED TO HEADERS DURING SHIPMENT.



- 2759-(\*\*\*)\*
- FORM
  - L=LOOSE
  - C=LOOSE CRIMPED
  - A=CHAIN PER ES-339-A
  - B=CHAIN PER ES-339-B
- PLATING  
SEE NOTE 2

SH	REV
1	AS3
2	AS4

DATE	DESCRIPTION
2008/03/17	UPDATE DIMS
2008/03/17	DEC NO: UCP-2008-2190
2008/03/18	DRM:WADERR
2008/03/18	CHKD:LSCHMIT
2008/03/18	APPR:LSCHMIT

QUALITY SYMBOLS	GENERAL TOLERANCES (UNLESS SPECIFIED)
▽=0	mm INCH
▽=0	4 PLACES ± --- ± ---
	3 PLACES ± --- ± .010
	2 PLACES ± 0.25 ± .014
	1 PLACE ± 0.36 ± ---
	ANGULAR ± 1/2°

DIMENSION STYLE	SCALE	DESIGN UNITS	THIRD ANGLE PROJECTION
MM/IN	---	INCH	☐

DRAWN BY	DATE	TITLE
SAMIEC	07/28/87	CRIMP TERMINAL 22-30 GA WIRE
CHECKED BY	DATE	
PATEL	07/28/87	
APPROVED BY	DATE	
LENZ	07/28/87	
MATERIAL NO.	DOCUMENT NO.	
SEE CHART	SD-2759	
SHEET NO.		
1 OF 2		

DRAFT WHERE APPLICABLE MUST REMAIN WITHIN DIMENSIONS

THIS DRAWING CONTAINS INFORMATION THAT IS PROPRIETARY TO MOLEX INCORPORATED AND SHOULD NOT BE USED WITHOUT WRITTEN PERMISSION

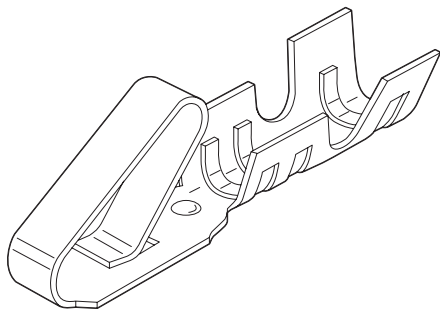
2759-\*\*\*)\*

PART NO.	ENG. NO.	PART NO.	ENG. NO.	PART NO.	ENG. NO.	PART NO.	ENG. NO.
08-55-0101	2759-(555)B						
08-55-0102	2759-(555)L						
08-55-0126	2759-(555)A						
08-56-0109	2759-(550)B						
08-56-0110	2759-(550)L						
08-50-0113	2759-(P909)B						
08-50-0114	2759-(P909)L						
08-50-0124	2759-(P909)C						
08-51-0108	2759-(122)B						
	2759-(122)L						
I 08-50-0274	2759-(P909)B						
I 08-50-0275	2759-(P909)L						
I 08-50-0273	2759-(P909)A						
08-55-0130	2759-(558)B						
08-55-0131	2759-(558)L						
08-50-0160	2759-(102)L						
08-50-0159	2759-(102)						

REMOVE *999 PARTS EC NO: UCP2008-0722 DRAWN BY: 2007/08/02 CHKD: JRELL 2007/08/02 APPR: ESM: JH 2007/08/03 AS4 REV DESCRIPTION	QUALITY SYMBOLS	GENERAL TOLERANCES (UNLESS SPECIFIED)	DIMENSION STYLE	SCALE	DESIGN UNITS	THIRD ANGLE PROJECTION	
	▽=0 ▽=0	mm INCH 4 PLACES ± --- ± --- 3 PLACES ± --- ± --- 2 PLACES ± --- ± --- 1 PLACE ± --- ± --- ANGULAR ±1/2°	MM/IN	---	INCH	DRAWN BY: SAMIEC DATE: 07/28/87 CHECKED BY: DATE: 07/28/87 APPROVED BY: LENZ DATE: 07/28/87	TITLE: CRIMP TERMINAL 22-30 GA WIRE MOLEX MOLEX INCORPORATED
		DRAFT WHERE APPLICABLE MUST REMAIN WITHIN DIMENSIONS	SEE CHART	MATERIAL NO.	DOCUMENT NO.	SHEET NO.	
			SIZE D		SD-2759	2 OF 2	

## 2.54mm (.100") Pitch KK® Crimp Terminal

2759/6459



### Features and Benefits

- Standard cantilever terminal
- Cantilever design provides high contact pressure
- Wiping action cleans oxides when connector is mated
- 2759 Series is Brass
- 6459 Series is Phosphor Bronze

### Reference Information

Product Specification: PS-10-07  
Packaging: Reel or bag  
Tooling Information: See crimp tooling section  
UL File No.: E29179  
CSA File No.: LR19980  
Use With: 2695, 5051 and 6745 housings  
Designed In: Inches

### Electrical

Voltage: 250V  
Current: 6459—4.0A  
2759—2.5A  
Contact Resistance: 20 milliohms max.  
Dielectric Withstanding Voltage: 1500V  
Insulation Resistance: 50K Megohms min.

### Mechanical

Wire Pull-Out Force:

Wire Gauge (AWG)	22	24	26	28	30
Pull-Out Force (lb)	10	8	6	4	3

Mating Force: 255g max.  
Unmating Force: 50g min.  
Normal Force: 200g min.

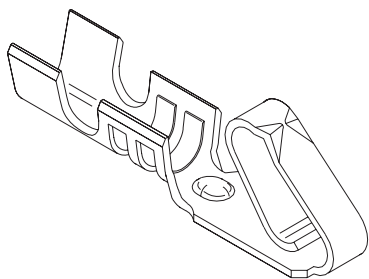
### Physical

Contact: 6459—Phosphor Bronze; 2759—Brass  
Plating: See Table  
Wire Accommodation: 22 to 30 AWG  
Insulation Range: 1.58mm (.062") diameter max.

Contact	Order No.						Wire Gauge (AWG)	Insulation OD	Lead-free
	Tin Plating		15µm Gold Plating		15µm Selective Gold Plating				
	Reel	Bag	Reel	Bag	Reel	Bag			
Brass	<a href="#">08-50-0113</a>	<a href="#">08-50-0114</a>	<a href="#">08-56-0109</a>	<a href="#">08-56-0110</a>	<a href="#">08-55-0101</a>	<a href="#">08-55-0102</a>	22-30	1.57 (.062)	Yes
Phosphor Bronze	<a href="#">08-52-0101</a>	<a href="#">08-52-0123</a>	<a href="#">08-65-0813</a>	<a href="#">08-65-0814</a>	<a href="#">08-65-0815</a>	<a href="#">08-65-0816</a>			

## 2.54mm (.100") Pitch KK® Cat Ear Terminal

5159



### Features and Benefits

- Similar to 2759/6459 Series with cat ears
- Cat ears provide 2 high pressure points of contact
- Suitable for high vibrational requirements

### Reference Information

Product Specification: PS-10-07  
Packaging: Bag or reel  
Tooling Information: See crimp tooling section  
UL File No.: E29179  
CSA File No.: LR19980  
Use With: 2695, 5051 and 6471  
Designed In: Inches

### Electrical

Voltage: 250V  
Current: 3.0A  
Contact Resistance: 20 milliohms max.  
Dielectric Withstanding Voltage: 1000V AC  
Insulation Resistance: 1000 Megohms min.

### Physical

Contact: Phosphor Bronze and Brass  
Plating: Tin  
Wire Accommodation: 22 to 30 AWG

Order No.				Lead-free
Phosphor Bronze		Brass		
Bag	Reel	Bag	Reel	
<a href="#">08-70-0049</a>	<a href="#">08-70-0048</a>	<a href="#">08-70-0069</a>	<a href="#">08-70-0064</a>	Yes

Preferred version in the Far East