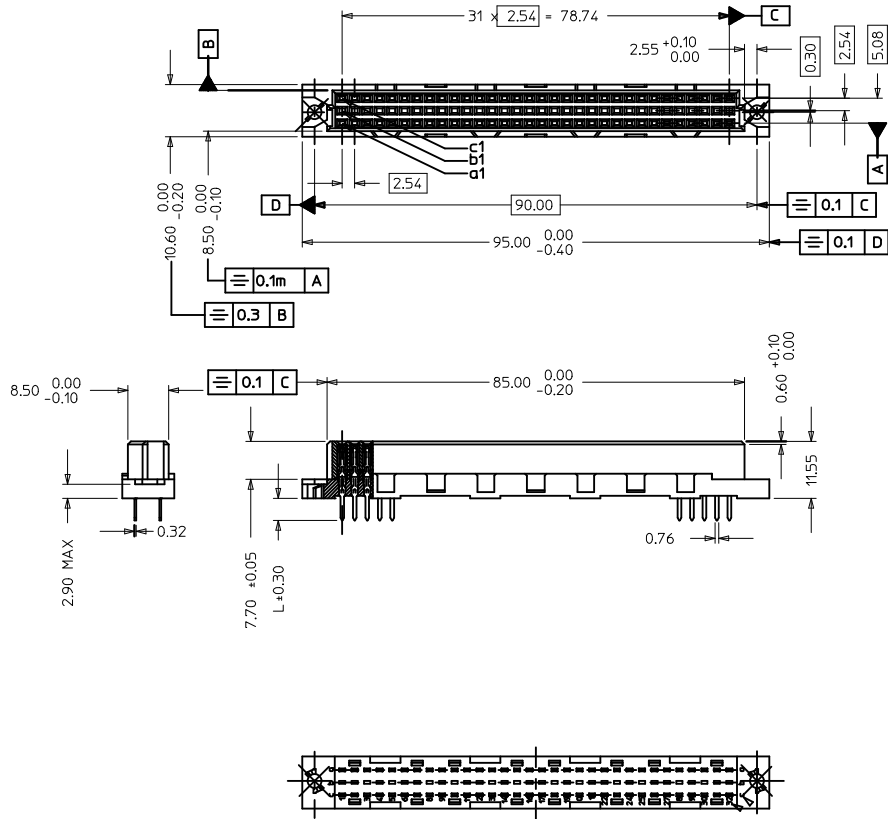
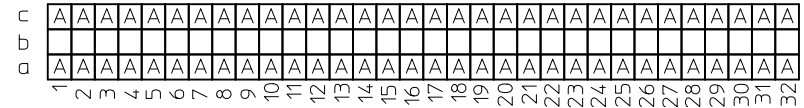


MATERIAL No	PERFORMANCE LEVEL	PLATING	CONTACT SEQUENCE/ROW	DIM "L" mm	HOUSING TOP NO.	QTY	HOUSING BOTTOM NO.	QTY	CONTACT NO	QTY	MOUNTING CLIP NO.	QTY	FLUX PROOF	FLUX PROOF	MARKING
850420268	G2/0=CONTACT AREA LEVEL 2/TERMINATION TIN	Au+Ni	1,2,3...32 a+c	2.9	365220001	1	365220003	1	365230014	64	NO	-	NO	NO	STANDARD
850429026	G4/0=CONTACT AREA LEVEL 4/TERMINATION TIN	Au+Ni	1,2,3...32 a+c	2.9	365220001	1	365220003	1	365230031	64	NO	-	NO	NO	STANDARD

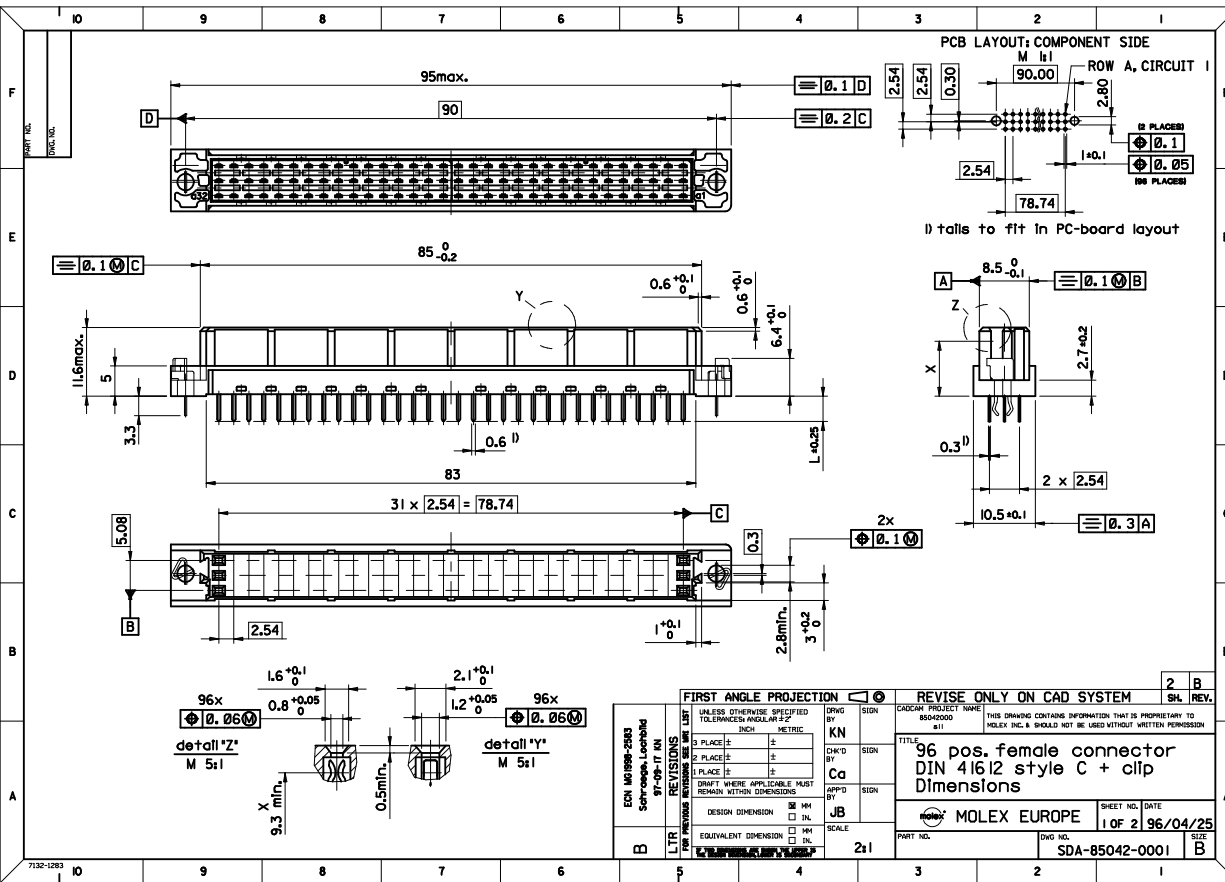
VIEW ON MATING SIDE



NOTES :-

- 1) MATERIALS: POLYESTER (PBT), 30% GLASS FILLED, UL94V-0.
COLOUR: PEBBLE GREY RAL 7032
OR ENGINEERING APPROVED EQUIVALENT
- 2) PRODUCT SPECIFICATION : PS-85042-0001

ENTER DESCRIPTION EC NO: 2010-0404 2010/02/09 DRWN: SNG01 CHKD: KPRASAD 2010/02/15 APPR: KPRASAD 2010/02/16	QUALITY SYMBOLS ▽=0 ▽=0	GENERAL TOLERANCES (UNLESS SPECIFIED)		DIMENSION STYLE MM ONLY		SCALE 1:1	DESIGN UNITS METRIC	THIRD ANGLE PROJECTION	
		4 PLACES ± --- ± ---	mm INCH	DRAWN BY HARSHA MR	DATE 2009/10/07	TITLE ASSEMBLY, DIN 41612, C FEMALE, 64 POS 1.0MM PCB DIA			
		3 PLACES ± 0.01 ± ---		CHECKED BY KPRASAD	DATE 2009/10/07	MOLEX INCORPORATED			
		2 PLACES ± 0.08 ± ---		APPROVED BY KPRASAD	DATE 2009/10/07	MATERIAL NO. SEE CHART			
		1 PLACE ± 0.1 ± ---		ANGULAR ± 2 °		DOCUMENT NO. SD-85042-268		SHEET NO. 1 OF 2	
DRAFT WHERE APPLICABLE MUST REMAIN WITHIN DIMENSIONS		THIS DRAWING CONTAINS INFORMATION THAT IS PROPRIETARY TO MOLEX INCORPORATED AND SHOULD NOT BE USED WITHOUT WRITTEN PERMISSION							



SHT. 1 OF		MRI -			
MODIFICATION RECORD INDEX					
ECN	ISS.	DATE	INIT.	SHTS. AFFECTED	DESCRIPTION OF MOD.
2213	A	96.04.26	KN	1 / 2	first release
2253	AI	96.10.01	KN	1	Kontur ueber Rastfenster
2583	B	97.09.17	KN	1	Schraege Im Flanschbereich Lochbild

MOLEX EUROPE		REVISE ONLY ON CAD SYSTEM	
THIS DRAWING CONTAINS INFORMATION THAT IS PROPRIETARY TO MOLEX INC. & SHOULD NOT BE USED WITHOUT WRITTEN PERMISSION		CAD/CAM FILENAME	
MF0028		ISSUE	

LEVEL CHART

1	17	33	49
2	18	34	50
3	19	35	51 LEVEL INDEX
4	20	36	52 RESERVED
5	21	37	53 RESERVED
6	22	38	54 Inspection Balloons
7	23	39	55 DIMENSIONS
8	24	40	56 TABLES/CHARTS
9	25	41	57 REVISION TEXT & MRI
10	26	42	58 Notes/text - English
11	27	43	59 Bill of materials
12	28	44	60 notes/text - german
13	29	45	61
14	30	46	62 notes/text - french
15	31	47	63 RESERVED
16	32	48	

VIEW ON MATING SIDE

∩	A	A	A	A	A	A	A	A	A	A	A	A	A	A	A	A	A	A	A	A	A	A	A	A	A	A	A
∩																											
∩	A	A	A	A	A	A	A	A	A	A	A	A	A	A	A	A	A	A	A	A	A	A	A	A	A	A	A

1 2 3 4 5 6 7 8 9 10 11 12 13 14 15 16 17 18 19 20 21 22 23 24 25 26 27 28 29 30

A - 64 STANDARD CONTACTS L-2,9

Marking	Standard
Performance level	G2/0 = Contact area level2 / Termination tin
Flux proof	no
Fixing clip	no
Dimensions	SDA-85042-0001 sht.1
Technical Data	PS-85042-0001

A
 Contact symbol
 G2/0 a1-32 c1-32
 Perform. level
 Contact position number

first release see ECN No. 2154	REVISIONS		FOR PREVIOUS REVISIONS SEE MRI LIST	
	LTR	∇		
	UNLESS OTHERWISE SPECIFIED TOLERANCES: ANGULAR ± 2° INCH METRIC			
3 PLACE ± .	±	DRWG BY	Cd	SIGN
2 PLACE ± .	±	CHK'D BY	KN	SIGN
1 PLACE ± .	±	APPD BY		SIGN
DRAFT WHERE APPLICABLE MUST REMAIN WITHIN DIMENSIONS				
DESIGN DIMENSION		<input type="checkbox"/> MM	<input type="checkbox"/> IN.	SCALE
EQUIVALENT DIMENSION		<input type="checkbox"/> MM	<input type="checkbox"/> IN.	
IF TWO DIMENSIONS ARE SHOWN, THE UPPER IS THE DESIGN DIMENSION, LOWER IS SECONDARY				
REVISE ONLY ON CAD SYSTEM SH. REV. THIS DRAWING CONTAINS INFORMATION THAT IS PROPRIETARY TO MOLEX INC. & SHOULD NOT BE USED WITHOUT WRITTEN PERMISSION				
TITLE 96 pos. female connector acc. DIN 41612 style C contacts arrangement		SHEET NO.		DATE
		1 OF 1		96/05/28
MOLEX EUROPE		DWG NO.		SIZE
		SDA-85042-0268		A