

## FEATURES AND SPECIFICATIONS

### Features and Benefits

- 4-point contact
- Anti-fishhooking contact design

### Reference Information

Packaging: Reel or bag

Tooling Information: See end of section

Use With: 5195-N, 5196-N, 5197-N, 5198-N,  
5199-N and 43061 housings

Designed In: Millimeters

### Electrical

Voltage: 250V

Current:

5194—7.0A max. (Brass) or 5.0A (Phosphor Bronze)

5225—4.0A max.

Contact Resistance: 10mΩ max.

Dielectric Withstanding Voltage: 1500V AC/1 min.

Insulation Resistance: 1000 MΩ min.

### Physical

Contact: 5194—Brass and Phosphor Bronze

5225—Brass

Plating: Tin

Temperature: -40 to +105°C

Wire Accommodation: 5194—18 to 24 AWG

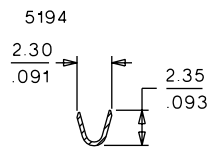
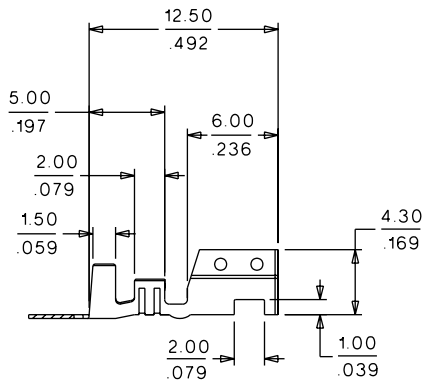
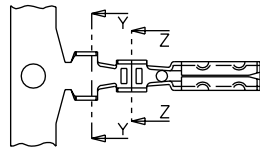
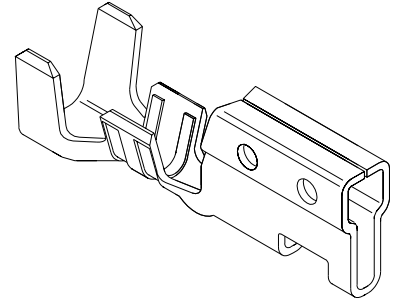
5225—22 to 28 AWG

Strip Length: 3.0 to 3.5mm

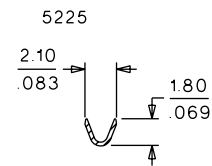
# molex® 3.96mm (.156") Pitch SPOX™ Crimp Terminal

## 5194/5225

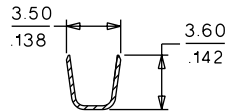
## Spring Box



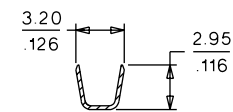
SECTION Z-Z



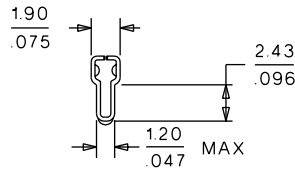
SECTION Z-Z



SECTION Y-Y



SECTION Y-Y



## ORDERING INFORMATION AND DIMENSIONS

Order No.	Terminal	Wire Gauge AWG	Insulation Diameter	Contact Material
08-70-1031	Reel	18-24	1.30-3.20mm	Tin-Plated Brass
08-70-1030	Bag			
39-00-0021	Reel			Tin-Plated Phosphor Bronze
39-00-0022	Bag			
08-70-1029	Reel	22-28	1.20-2.60mm	Tin-Plated Brass
08-70-1028	Bag			

Recommended wire range assumes stranded wire