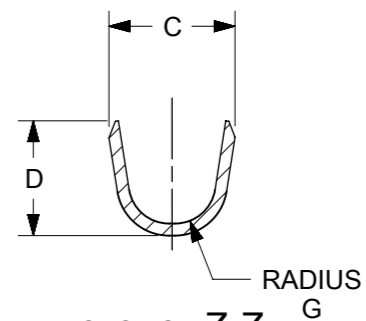
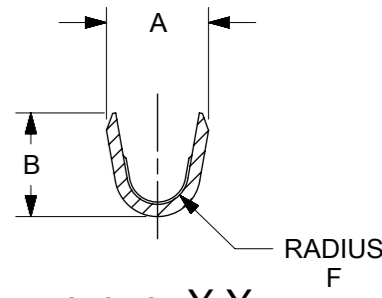


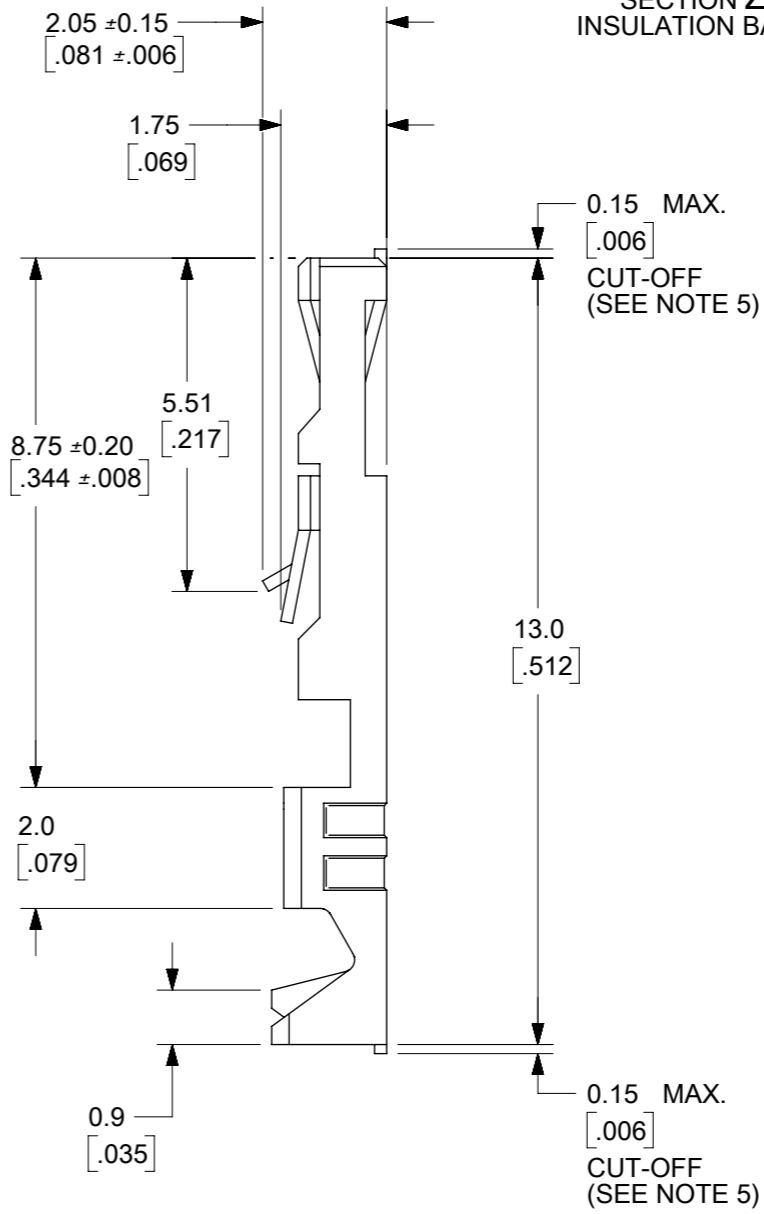
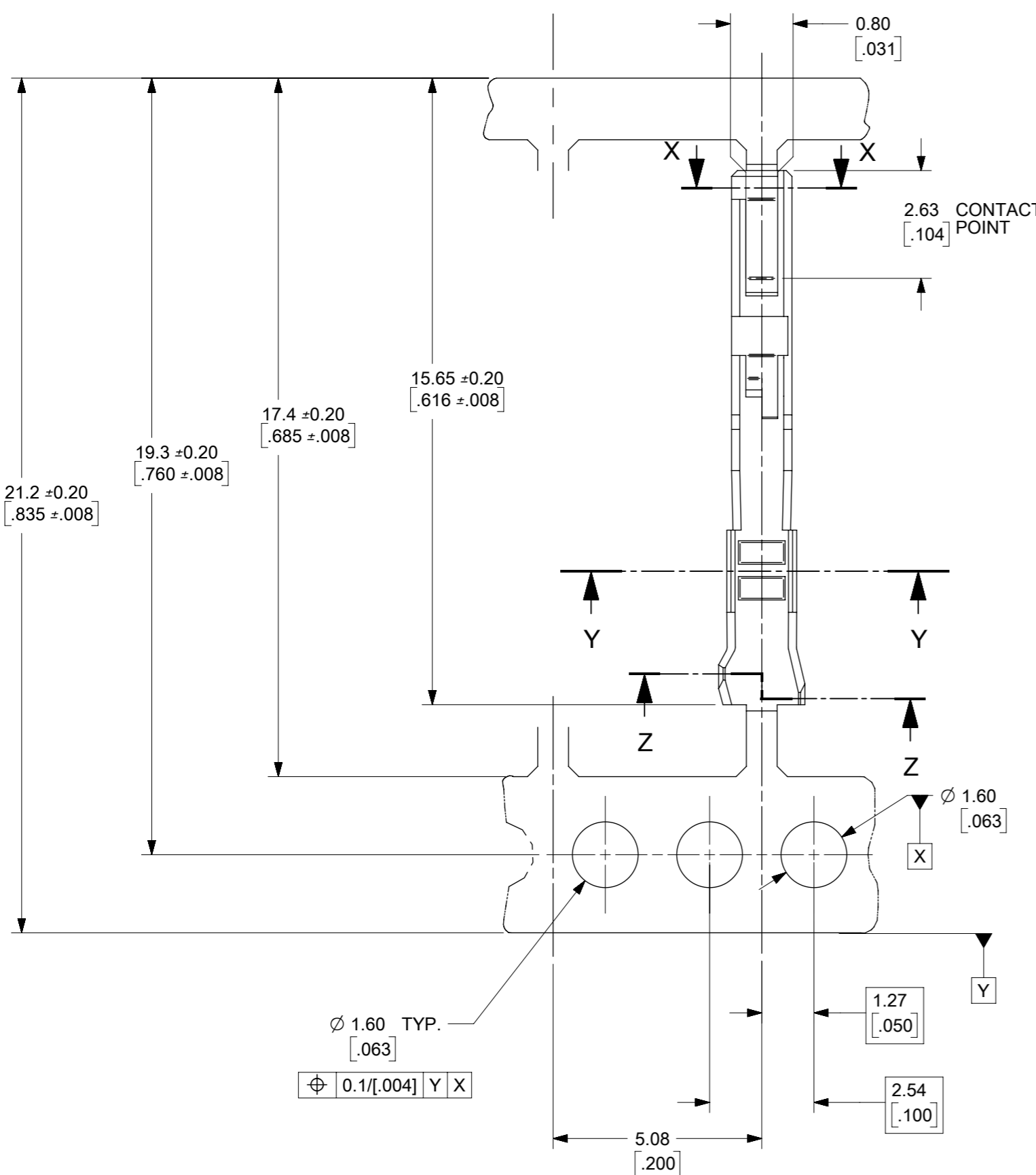
SECTION X-X



SECTION Z-Z  
INSULATION BARREL



SECTION Y-Y  
WIRE BARREL



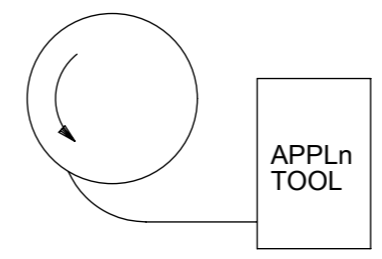
**NOTES:**

1. MATERIAL -  
PHOSPHOR BRONZE CDA 521  
THICKNESS : 0.200/[.008]  
TENSILE STRENGTH = 655 ~ 760 N/mm<sup>2</sup>  
PLATING - SEE SHEET 2
2. FOR DIMENSION A,B,C,D,F & G  
SEE SHEET 2
3. FOR WIRE SIZE & INSULATION DIA  
SEE SHEET 2
4. THIS TERMINAL TO MATE WITH  
0.635 / [.025] SQUARE PIN
5. MAX BURR AFTER CUT-OFF  
0.025 / [.001]

THIS DRAWING CONTAINS INFORMATION THAT IS PROPRIETARY TO MOLEX ELECTRONIC TECHNOLOGIES, LLC AND SHOULD NOT BE USED WITHOUT WRITTEN PERMISSION		CURRENT REV DESC: DATUM ADD FOR TP		<b>molex</b>	
DIMENSION UNITS mm/[in]		SCALE NTS			
GENERAL TOLERANCES (UNLESS SPECIFIED)		EC NO: 607190		C-GRID III FEMALE CRIMP TERMINAL	
4 PLACES ±		DRWN: RMV02 2018/11/02		DOCUMENT NUMBER	
3 PLACES ± 0.004		CHK'D: GJEEVANSURES 2019/04/01		SD-90119	
2 PLACES ± 0.1		APPR: ISHWARG 2019/04/02		DOC TYPE DOC PART REVISION	
1 PLACE ± 0.2		INITIAL REVISION:		PSD 001 M	
0 PLACES ±		DRWN: NPC 1987/08/27		MATERIAL NUMBER	
ANGULAR TOL ± 0.5°		APPR: MLOMG 2011/07/04		CUSTOMER	
DRAFT WHERE APPLICABLE MUST REMAIN WITHIN DIMENSIONS		THIRD ANGLE PROJECTION		SHEET NUMBER	
		DRAWING A3-SIZE		1 OF 2	
		SERIES 90119		SEE TABLE	
		GENERAL MARKET			

					CRIMP DIMENSION					
					WIRE BARREL			INSULATION BARREL		
PART No	PLATING	REELING	WIRE SIZE (AWG)	INSULATION RANGE	A ±0.15 ±[.006]	B ±0.15 ±[.006]	F ±0.15 ±[.006]	C ±0.15 ±[.006]	D ±0.15 ±[.006]	G ±0.15 ±[.006]
90119-0109	A	L.H FEED	22,24	1.02 ~ 1.47 [.040 ~ .058]	1.70 [.067]	1.70 [.067]	0.51 [.020]	2.10 [.083]	1.90 [.075]	0.70 [.028]
90119-0110	E									
90119-0111	F									
90119-0112	D									
90119-0120	A									
90119-0121	E									
90119-0122	F	LOOSE PIECE PARTS	26,28	0.76 ~ 1.22 [.030 ~ .048]	1.37 [.054]	1.37 [.054]	0.28 [.011]	2.00 [.079]	1.70 [.067]	0.60 [.024]
90119-0123	D									
90119-2109	A									
90119-2110	E									
90119-2111	F									
90119-2112	D									
90119-2120	A	LOOSE PIECE PARTS	26,28	0.76 ~ 1.22 [.030 ~ .048]	1.37 [.054]	1.37 [.054]	0.28 [.011]	2.00 [.079]	1.70 [.067]	0.60 [.024]
90119-2121	E									
90119-2122	F									
90119-2123	D									

TYPE	PLATING
A	PRE-PLATED HOT DIP TIN 1.0 TO 2.5 μm / [.00004 TO .0001 μin]
E	1.27 TO 1.78 μm / [.00005 TO .00007 μin] NICKEL OVERALL. 0.38 TO 0.64 μm / [.000015 TO .000025 μin] GOLD ON CONTACT AREA. 3.0 TO 5.0 μm / [.00012 to .0002 μin] TIN ON TERMINATION AREA.
F	1.27 TO 1.78 μm / [.00005 TO .00007 μin] NICKEL OVERALL. 0.38 TO 0.64 μm [.000015 TO .000025 μin] GOLD ON CONTACT AREA. 3.0 TO 5.0 μm / [.00012 TO .0002 μin] TIN ON TERMINATION AREA.
D	1.25 μm MIN NICKEL OVERALL. 0.05 μm ~ 0.10 μm GOLD FLASH ON CONTACT AREA 2.50 μm MIN TIN ON CRIMP AREA



L.H FEED

THIS DRAWING CONTAINS INFORMATION THAT IS PROPRIETARY TO MOLEX ELECTRONIC TECHNOLOGIES, LLC AND SHOULD NOT BE USED WITHOUT WRITTEN PERMISSION											
DIMENSION UNITS		SCALE		CURRENT REV DESC: DATUM ADD FOR TP						<b>molex</b>	
mm/[in]		NTS									
GENERAL TOLERANCES (UNLESS SPECIFIED)				EC NO: 607190		DRWN: RMV02		2018/11/02		C-GRID III FEMALE CRIMP TERMINAL	
				CHK'D: GJEEVANSURES		2019/04/01		APPR: ISHWARG			
				INITIAL REVISION:		DRWN: NPC		1987/08/27		DOCUMENT NUMBER	
				APPR: MLOMG		2011/07/04		SD-90119		DOC TYPE	
DRAFT WHERE APPLICABLE MUST REMAIN WITHIN DIMENSIONS				THIRD ANGLE PROJECTION		DRAWING		SERIES		MATERIAL NUMBER	
				A3-SIZE		90119		SEE TABLE		CUSTOMER	
				GENERAL MARKET		SHEET NUMBER		2 OF 2			

DOCUMENT STATUS	P1	RELEASE DATE	2019/04/02	04:31:41
-----------------	----	--------------	------------	----------