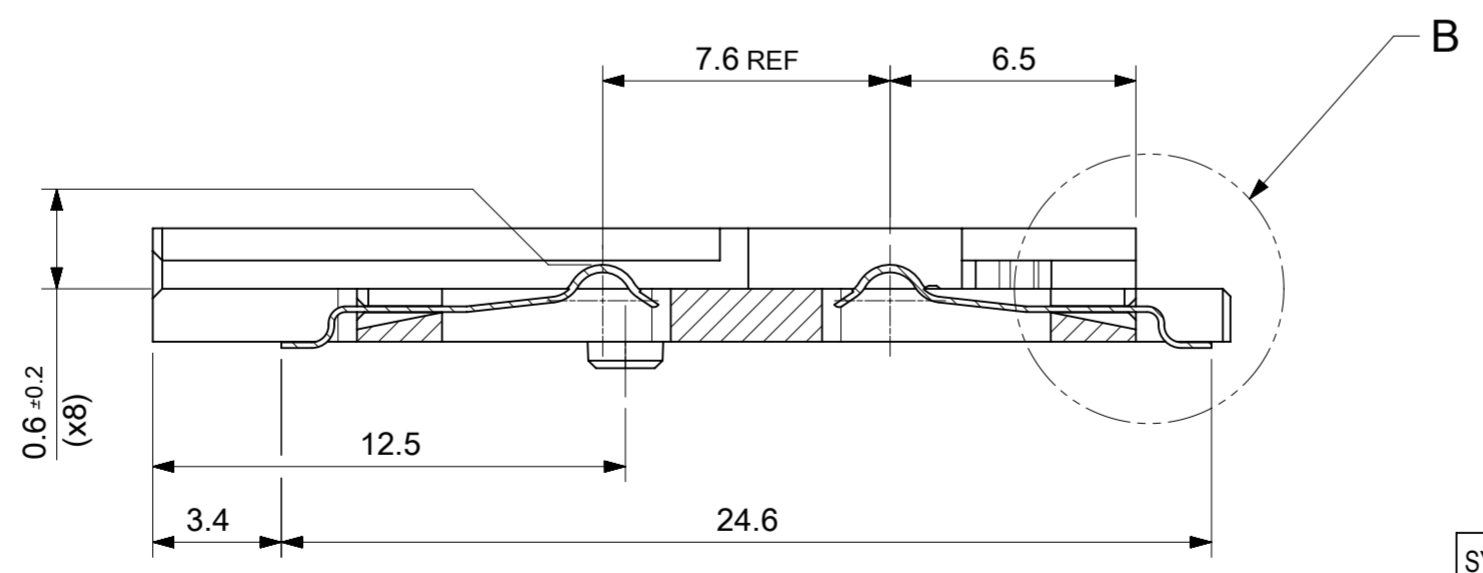
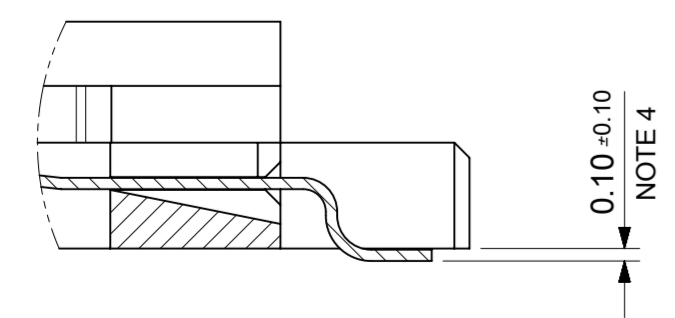


RECOMMENDED PCB LAYOUT

- NOTES:
1. PACKAGING: PARTS TO BE PACKAGED IN TAPE & REEL, SEE DRAWING SD-91915-003.
 2. SEE PRODUCT SPECIFICATION PS-91915-001.
 3. ✧ THIS IS A CUSTOMER SPECIFIC SYMBOL.
 4. TAILS ON EACH SIDE OF CONNECTOR TO LIE WITHIN 0.12mm OF EACH OTHER.



SECTION A-A

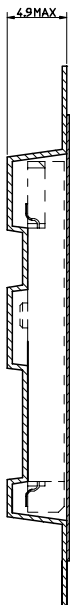
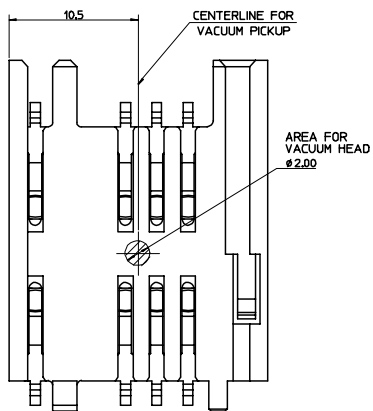


COPLANARITY
DETAIL B
SCALE 10:1

ITEM	COMPONENT	QTY	MATERIAL
1	HOUSING	1	LCP E130i UL-94 V-0, COLOUR BLACK RoHS & LEAD FREE COMPLIANT
2	TERMINAL	8	0.15 PHOSPHOR BRONZE Au FLASH OVER Pd/Ni Sn ON SMT TAILS

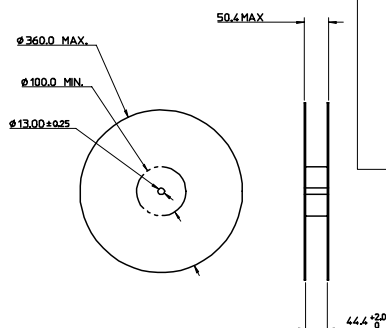
SYMBOLS		THIS DRAWING CONTAINS INFORMATION THAT IS PROPRIETARY TO MOLEX ELECTRONIC TECHNOLOGIES, LLC AND SHOULD NOT BE USED WITHOUT WRITTEN PERMISSION	
▽ = 0	DIMENSION UNITS	SCALE	CURRENT REV DESC:
▽ = 0	mm	5:1	
▽ = 0	GENERAL TOLERANCES (UNLESS SPECIFIED)		
▽ = 0	ANGULAR TOL ± 2.0°		
▽ = 3	4 PLACES ±	EC NO: 625545	2019/09/13
▽ = 0	3 PLACES ±	DRWN: AKABADI	2019/11/13
▽ = 0	2 PLACES ± 0.05	CHK'D: MMEANEY	2019/11/13
▽ = 0	1 PLACE ± 0.1	APPR: MMEANEY	2019/11/13
□ = 0	0 PLACES ±	INITIAL REVISION:	
■ = 0	DRAFT WHERE APPLICABLE MUST REMAIN WITHIN DIMENSIONS	DRWN: DCARTON	2007/02/14
▽ = 0	THIRD ANGLE PROJECTION	APPR: EFOLAN	2007/02/23
		DRAWING	SERIES
		A2-SIZE	91915
		MATERIAL NUMBER	CUSTOMER
		919150001	
		DOCUMENT NUMBER	DOC TYPE DOC PART REVISION
		SD-91915-001	PSD 001 B
		SHEET NUMBER	1 OF 1

COMPONENT PICK UP DETAIL



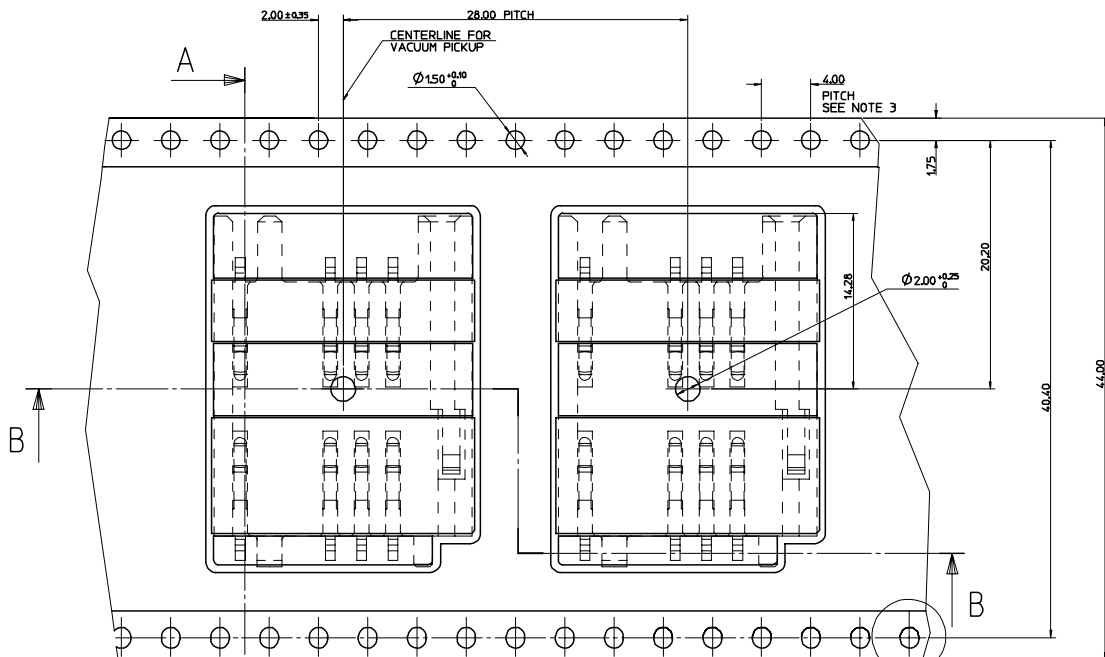
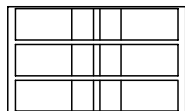
A-A

REFERENCE ONLY

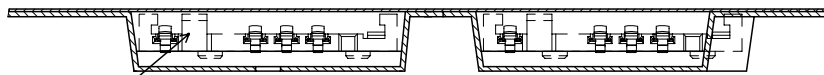


REEL DIMENSIONS
NOT TO SCALE

15001 PIECES ON A REEL
(3) REELS / CARDBOARD BOX
(15001) PIECES / CARDBOARD BOX - SUBJECT TO CHANGE

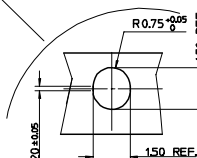


DIRECTION OF UNREELING →



B-B

NOTE 4



SCALE 10:1

NOTES:

- MATERIAL:
CARRIER TAPE: VOLUME CONDUCTIVE POLYSTYRENE, 0.40 REF THICK, BLACK
COVER TAPE: COLD SEAL POLYESTER, 0.06 REF THICK, TRANSPARENT
- PEEL FORCE OF THE COVER TAPE IS 0.1N TO 1.0N
AT MAXIMUM PEEL SPEED OF 300mm/min. ±10%
- PITCH TOLERANCE OVER ANY 10 PITCHES ±0.2
- TAPE & REEL PACKAGING FOR PART NUMBERS 919150001 & 919150002.

TO CUSTOMER ASSEMBLY MACHINE →



MOLEX REEL

ORIGINAL RELEASE EC NO: E2006-1110 DRAWING/CARTON 2007/02/14 CHKD: APPR:	QUALITY SYMBOLS ▼ - 0 ∇ - 0	GENERAL TOLERANCES (UNLESS SPECIFIED)		SCALE 4:1	DESIGN UNITS METRIC	THIRD ANGLE PROJECTION REVISE ON CAD ONLY BLISTER PACKAGING SIM CONNECTOR
				MM ONLY		
		4 PLACES ± --- ± --- 3 PLACES ± --- ± --- 2 PLACES ± 0.10 ± --- 1 PLACE ± 0.2 ± ---		DRAWN BY DATE DMAHER 2006/11/28 CHECKED BY DATE FDUGGAN 2006/11/28		
		ANGULAR ± 2 ° DRAFT WHERE APPLICABLE MUST REMAIN WITHIN DIMENSIONS		APPROVED BY DATE EFOLAN 2006/11/28		
				Molex MOLEX INCORPORATED MATERIAL NO. NOTE 4 DOCUMENT NO. SD-91915-003 SHEET NO. 1 OF 1		
				THIS DRAWING CONTAINS INFORMATION THAT IS PROPRIETARY TO MOLEX INCORPORATED AND SHOULD NOT BE USED WITHOUT WRITTEN PERMISSION		