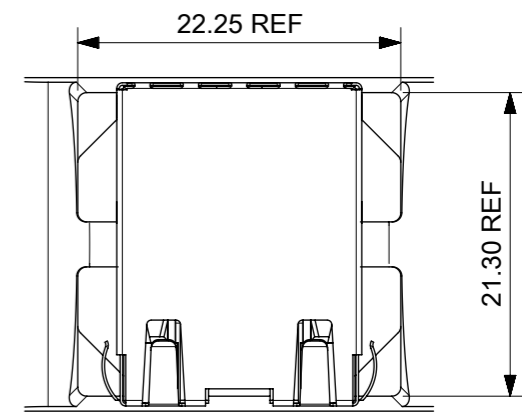
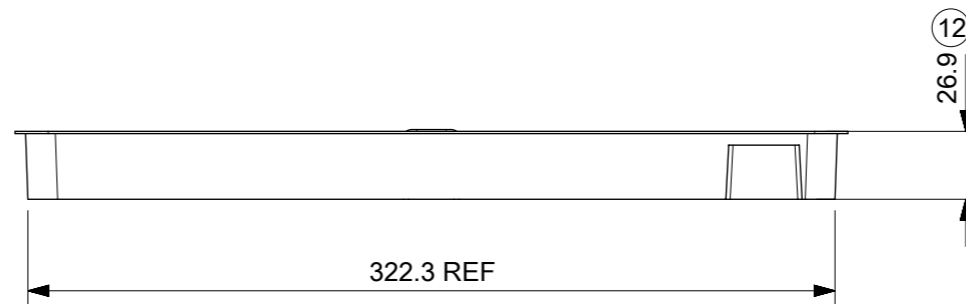
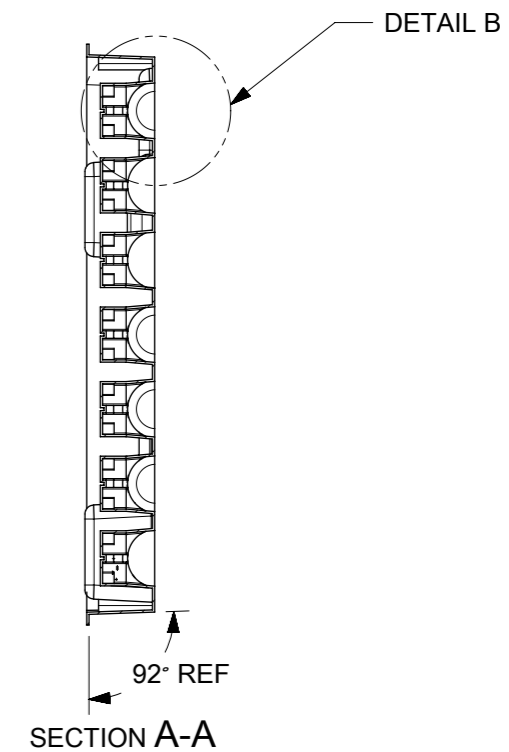
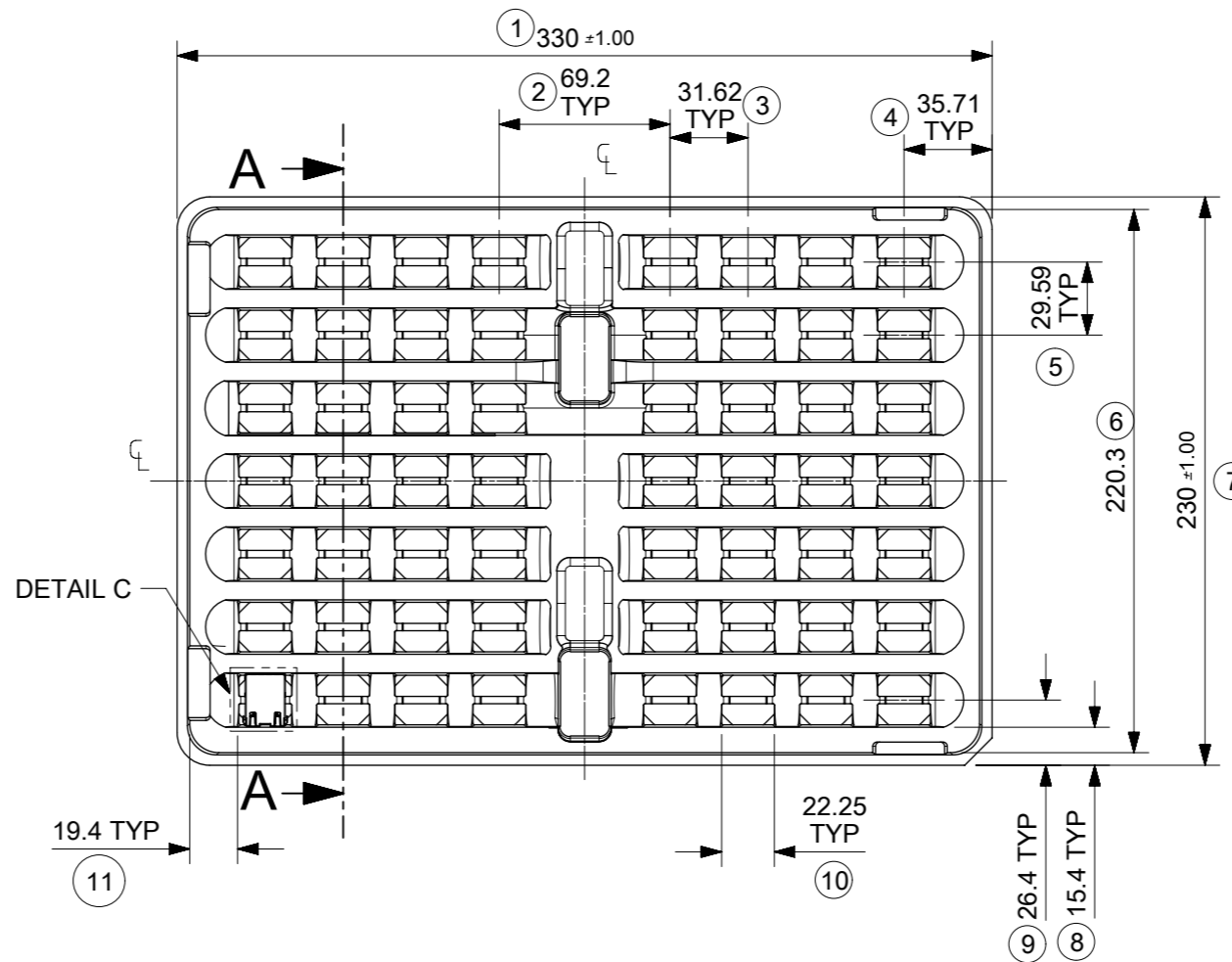


DETAIL B



DETAIL C
SCALE 2:1



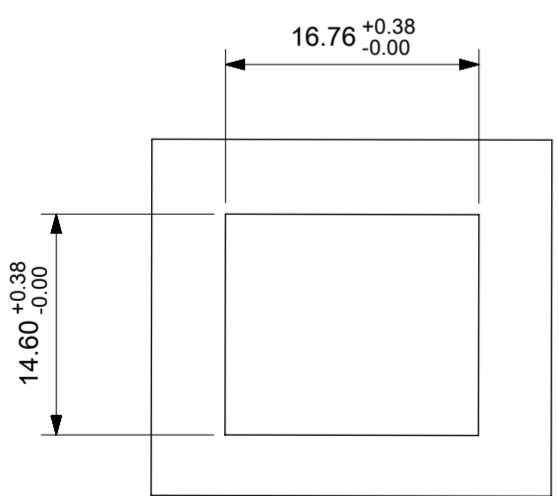
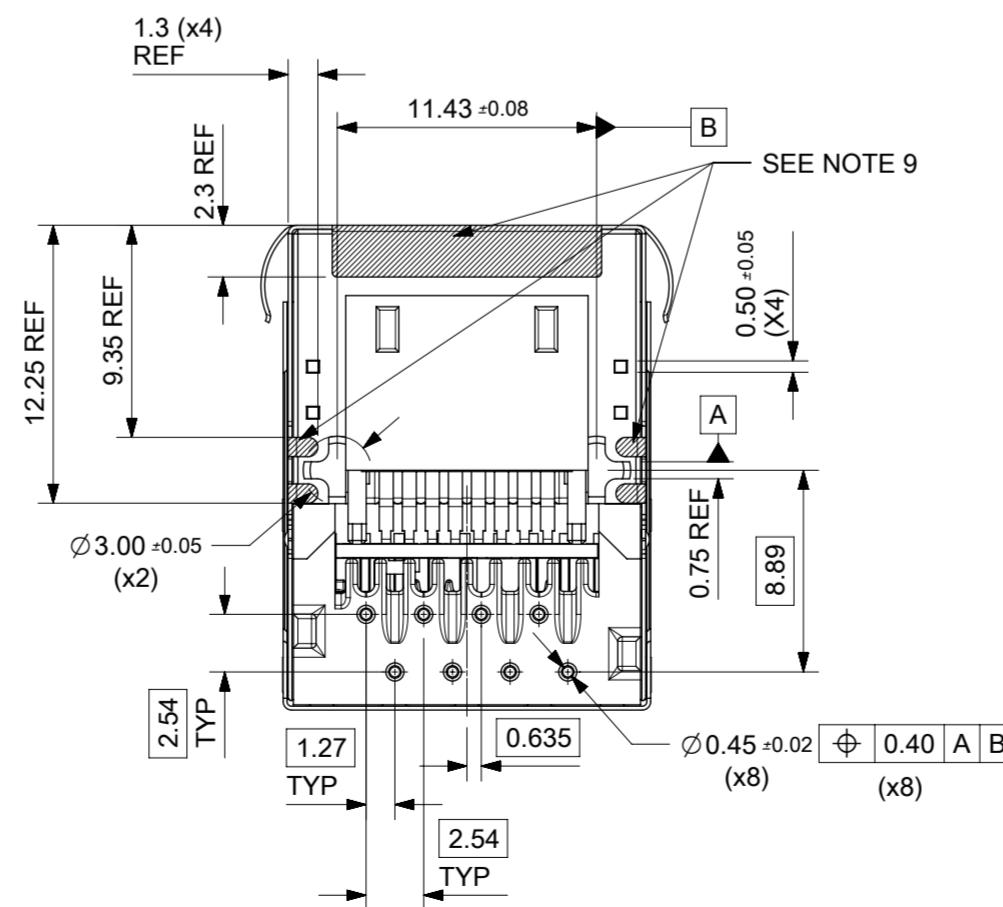
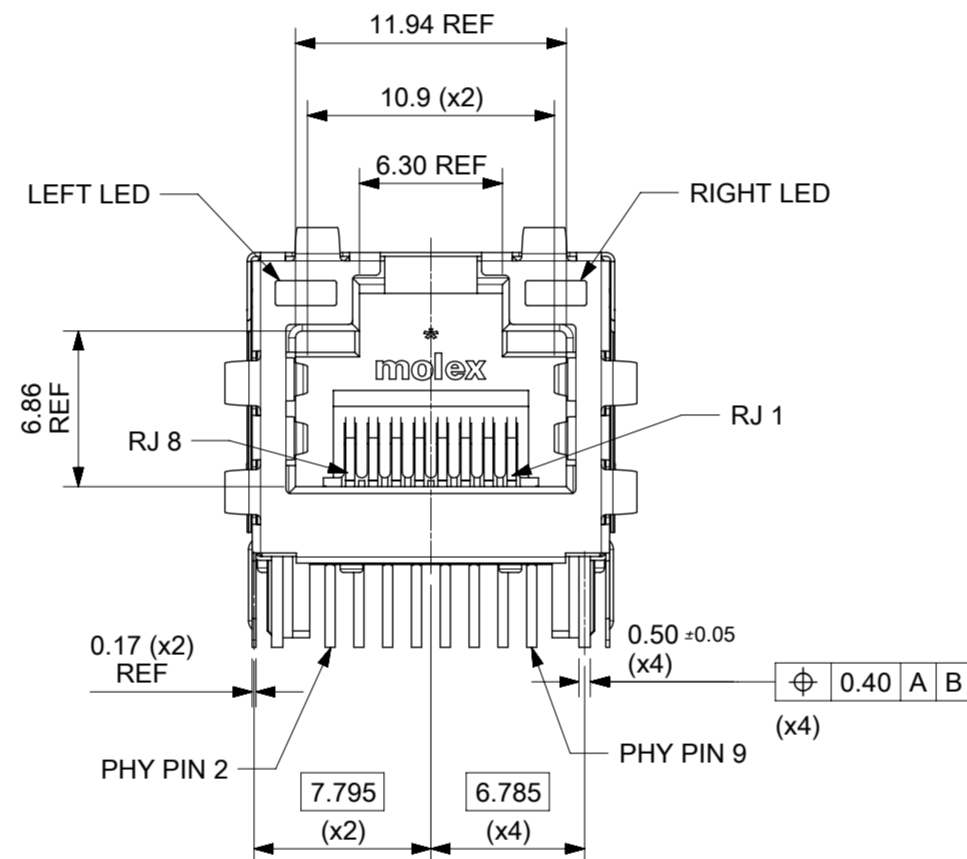
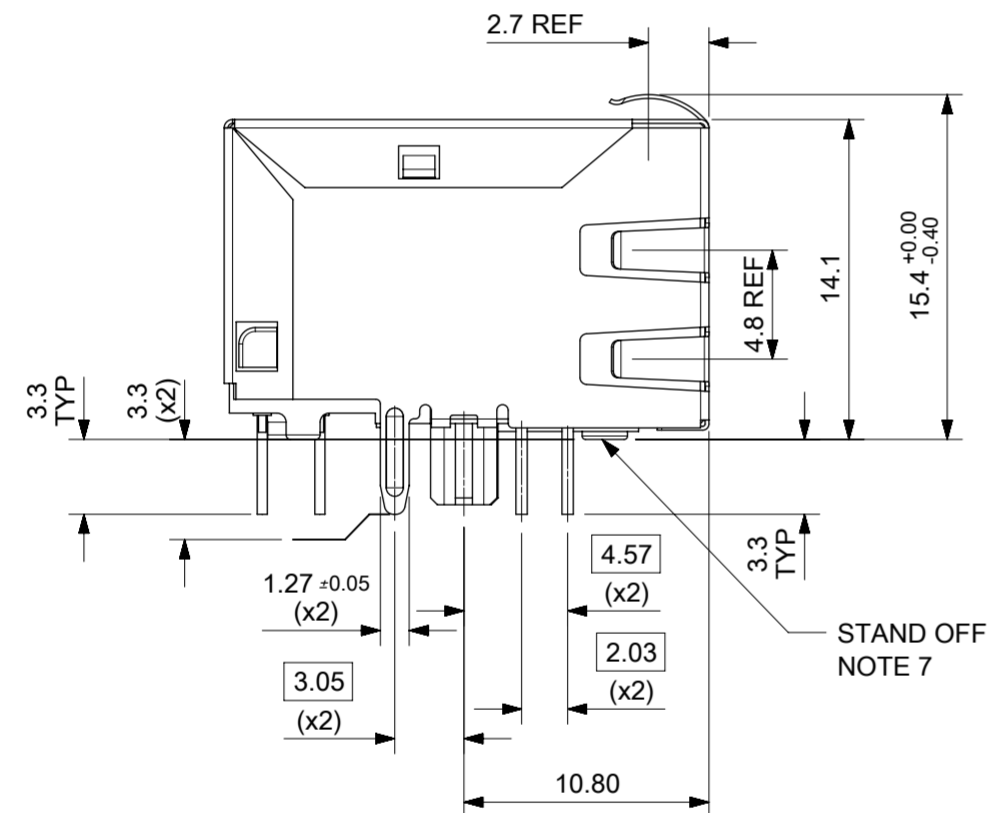
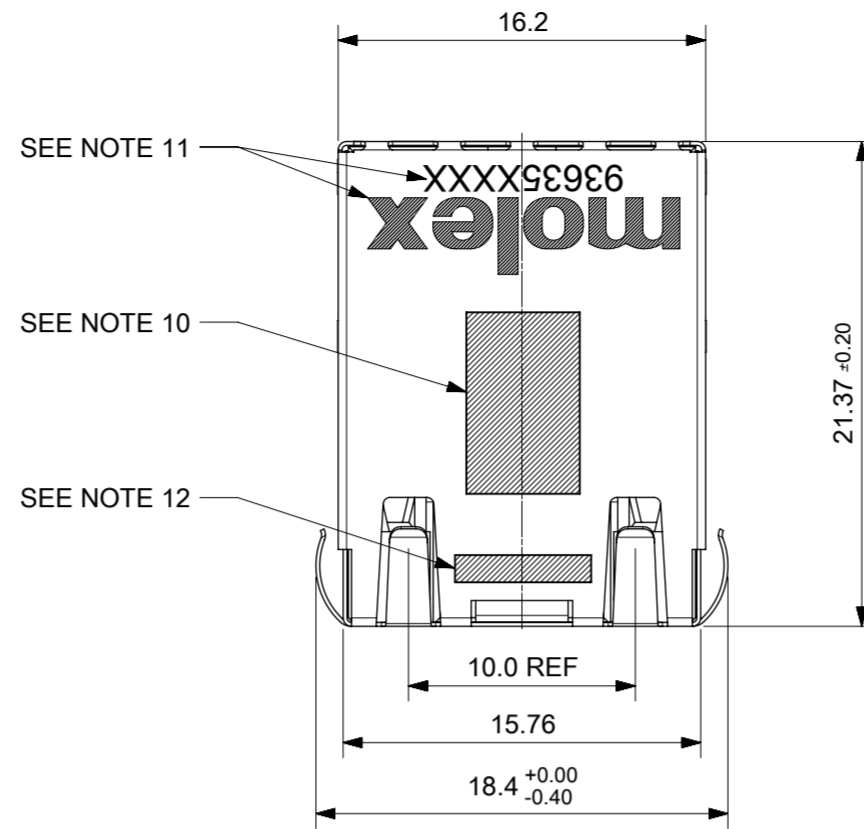
NOTES:

1. MATERIAL: PETA ANTISTATIC
2. THICKNESS: 0.9 mm ± 0.05 mm
3. COLOUR: CLEAR
4. BOW 2 mm MAXIMUM PER 330 mm
5. TWIST 2 mm MAXIMUM PER 330 mm
6. TRAY PART NO. AND RECYCLE LOGO TO BE CLEARLY MARKED ON TRAY
RECYCLE LOGO SHOULD BE APPROPRIATE TO MATERIAL USED
7. WHERE RELEVANT, DIMENSIONS SHOULD BE SYMMETRICAL ABOUT THE CENTRELINE
8. GENERAL PROFILE TOLERANCE $\overline{\cup}$ 0.40 ON NON DIMENSIONED FEATURES

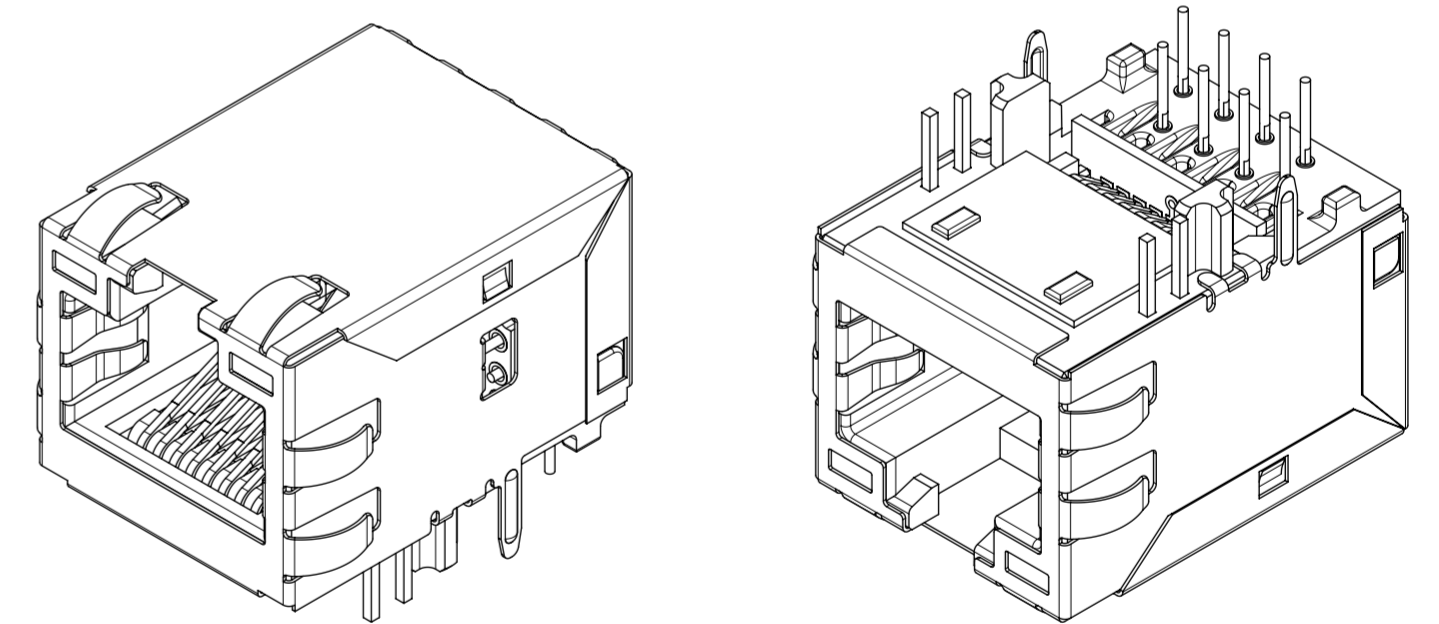
LAST INSPECTION NUMBER USED: 12

THIS DRAWING CONTAINS INFORMATION THAT IS PROPRIETARY TO MOLEX ELECTRONIC TECHNOLOGIES, LLC AND SHOULD NOT BE USED WITHOUT WRITTEN PERMISSION											
DIMENSION UNITS		SCALE		CURRENT REV DESC: REMOVED REFERENCE TO QUANTITY OF TRAYS PER STACK				molex			
mm		1:3									
GENERAL TOLERANCES (UNLESS SPECIFIED)											
ANGULAR TOL				± 1.0°							
4 PLACES				±							
3 PLACES				±							
2 PLACES				± 0.2							
1 PLACE				± 0.5							
0 PLACES				±							
DRAFT WHERE APPLICABLE MUST REMAIN WITHIN DIMENSIONS				THIRD ANGLE PROJECTION		DRAWING		SERIES		MATERIAL NUMBER	
						A3-SIZE		93462		990250150	
						2018/09/07		2019/01/25		2016/05/06	
						2019/01/25		2019/01/25		2016/12/07	
						EC NO: 602124		DRWN: DSHEA		2018/09/07	
						CHK'D: DBYRNES		APPR: DBYRNES		2019/01/25	
						INITIAL REVISION:		DRWN: KREILLY		2016/05/06	
						APPR: STGRIFFIN		2016/12/07			
						DOCUMENT NUMBER		DOC TYPE		DOC PART	
						934620003		PSD		K B	
						CUSTOMER		GENERAL MARKET		SHEET NUMBER	
										1 OF 1	

INVERTED PROFILE MAGNETIC JACK
FAST ETHERNET W/SHIELD TABS



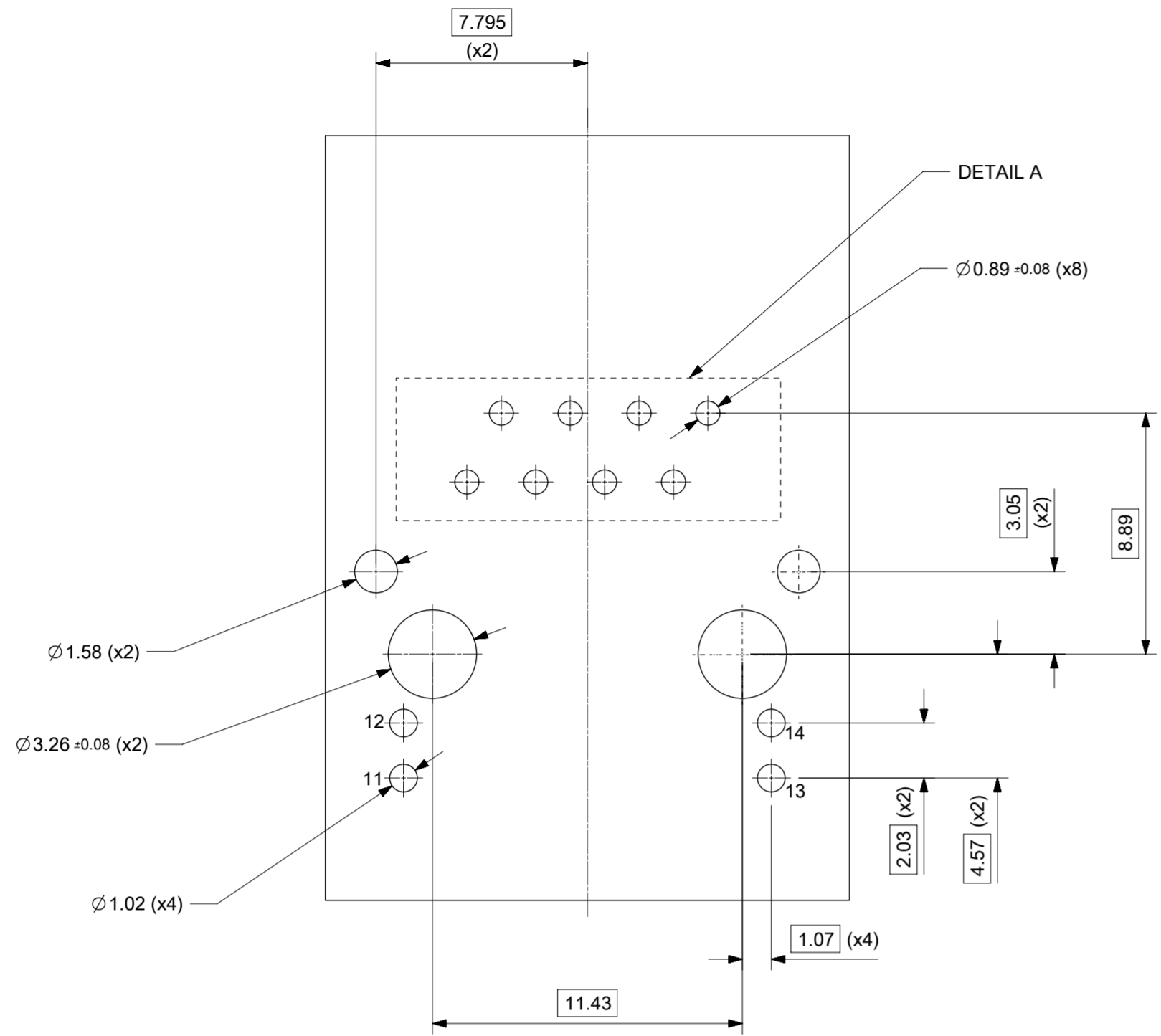
SUGGESTED PANEL CUT-OUT



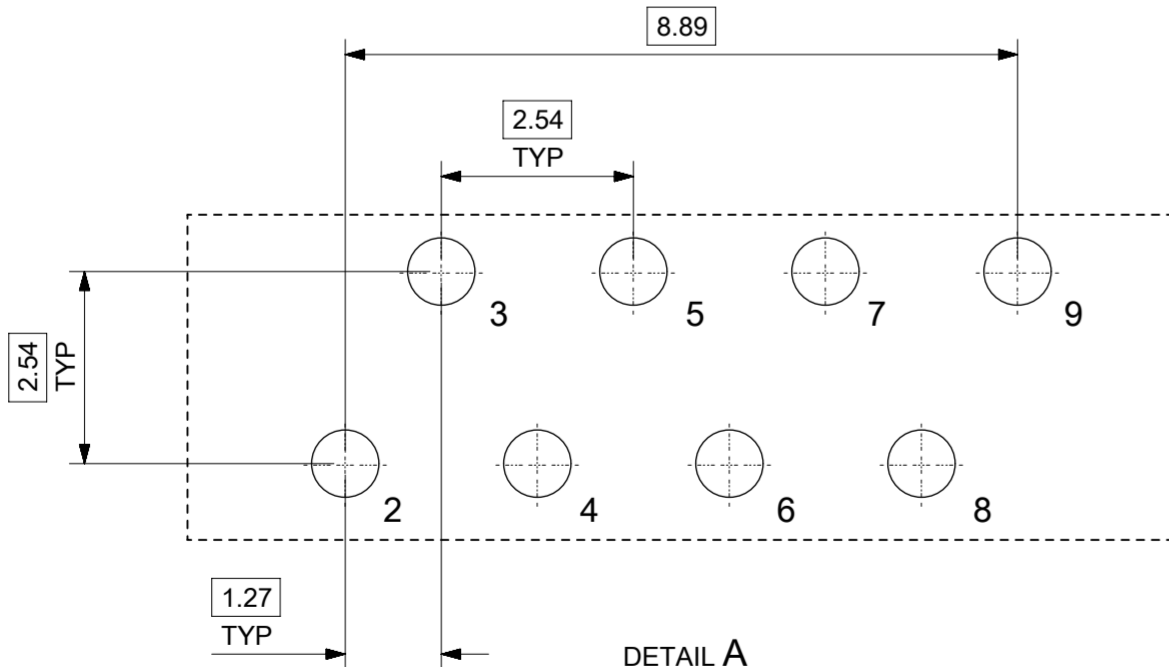
- NOTES:
- SHIELD MATERIAL: 0.17 mm THICK BRASS PRE-PLATED WITH NICKEL
SOLDER TABS POST DIPPED WITH MIN 1.27 μm TIN
 - HOUSING MATERIAL: LCP, BLACK, UL 94V-0
 - TERMINALS MATERIAL: PHOSPHOR BRONZE
RJ45 CONTACTS PLATING: BASE NICKEL PLATED WITH GOLD
FLASH OVER PALLADIUM NICKEL. REFER TO 934620001 PSP
PHY SOLDER TAILS: COPPER ALLOY
 - MATING INTERFACE ACCORDING TO IEC 60603-7 & TIA-1096-A
 - PRODUCT SPECIFICATION: 934620001 PSP
 - PACKAGING SPECIFICATION: 934620001 PSK - TRAY
 - STAND OFF TO SYSTEM BOARD 0.30 mm MIN
 - RECOMMENDED PCB THICKNESS: 1.57 mm
 - SHIELD: AVOID ROUTING TRACES
OR PLACING ANY VIAS BELOW THESE AREAS
 - AREA FOR PICK AND PLACE: 5.0 mm X 8.0 mm
 - INSCRIPTION MARKED BY LASER:
1st : MOLEX
2nd : P/N (SEE BOM)
 - INSCRIPTION MARKED BY LASER:
DATE CODE(DAY/WEEK/YEAR)
 - MATERIAL COMPLIANT TO RoHS DIRECTIVE 2002/95/EC

THIS DRAWING CONTAINS INFORMATION THAT IS PROPRIETARY TO MOLEX ELECTRONIC TECHNOLOGIES, LLC AND SHOULD NOT BE USED WITHOUT WRITTEN PERMISSION

REVISED EC NO: 116686 DRWN: KREILLY CHKD: DSHEA APPR: DBYRNES	2017/05/09	2017/09/12	2017/09/26	GENERAL TOLERANCES (UNLESS SPECIFIED)	DIMENSION UNITS	SCALE			
				ANGULAR TOL ± 2.0 °	mm	3:1			
	4 PLACES	±		KREILLY	DATE	2015/10/02			
	3 PLACES	±		CHK'D BY	DATE				
	2 PLACES	± 0.1		DBYRNES	DATE	2013/09/12	INV MX-MAG 6 CORE FE W/SHIELD		
	1 PLACE	± 0.2		STGRIFFIN	DATE	2015/11/19			
	0 PLACES	±							
DRAFT WHERE APPLICABLE MUST REMAIN WITHIN DIMENSIONS				DRAWING SIZE	THIRD ANGLE PROJECTION	PRODUCT CUSTOMER DRAWING			
				A2		SERIES	MATERIAL NUMBER	CUSTOMER	
						93635	SEE TABLE ON SHEET 2	GENERAL MARKET	
						DOCUMENT NUMBER	DOC TYPE	DOC PART	SHEET NUMBER
						936350001	PSD	000	1 OF 3



SUGGESTED BOARD LAYOUT
GIGABIT VERSION
COMPONENT SIDE
ALL DIMS REFERENCE DIMS



DETAIL A
SCALE 10:1

PIN CONFIGURATION
FOR FAST ETHERNET VERSION

PART NUMBER	LEFT LED	RIGHT LED
93635-8314	YELLOW	GREEN

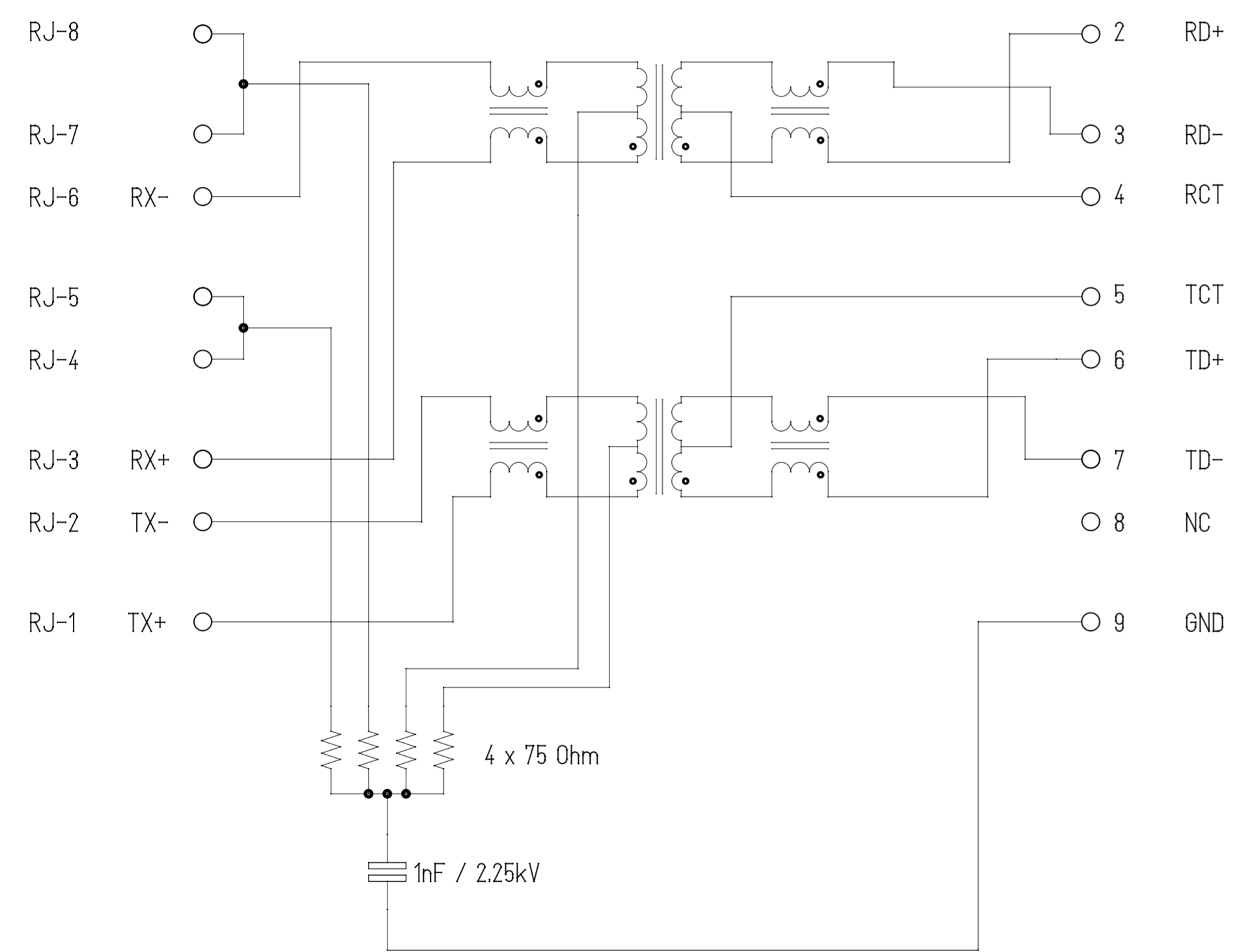
THIS DRAWING CONTAINS INFORMATION THAT IS PROPRIETARY TO MOLEX ELECTRONIC TECHNOLOGIES, LLC AND SHOULD NOT BE USED WITHOUT WRITTEN PERMISSION												
REVISED	EC NO: 116686	2017/05/09	GENERAL TOLERANCES (UNLESS SPECIFIED)	DIMENSION UNITS	SCALE	molex INV MX-MAG 6 CORE FE W/SHIELD						
	DRWN: KREILLY	2017/09/12	ANGULAR TOL ± 2.0 °	mm	5:1							
	CHKD: DSHEA	2017/09/26	4 PLACES ±	DRWN BY	DATE	PRODUCT CUSTOMER DRAWING						
	APPR: DBYRNES		3 PLACES ±	KREILLY	2015/10/02	SERIES MATERIAL NUMBER CUSTOMER						
			2 PLACES ± 0.1	CHK'D BY	DATE	93635 SEE TABLE GENERAL MARKET						
		1 PLACE ± 0.2	DBYRNES	2015/09/12	DOCUMENT NUMBER DOC TYPE DOC PART SHEET NUMBER							
		0 PLACES ±	APPR BY	DATE	936350001 PSD 000 2 OF 3							
		DRAFT WHERE APPLICABLE MUST REMAIN WITHIN DIMENSIONS	STGRIFFIN	2015/11/19	DRAWING SIZE	THIRD ANGLE PROJECTION						
B			A2									

RJ-45 CONTACTS

WIRE-SIDE / RJ-45

ETHERNET MAGNETICS

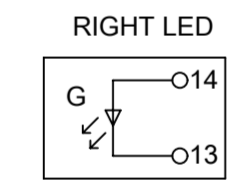
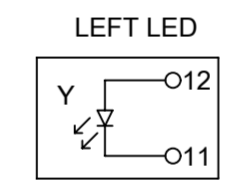
PHY-SIDE / PCB SIDE



Shield

ETHERNET TERMINALS

Description	Value	
OCL @100 kHz, 0.1 V 8 mA DC bias (-40°C to +85°C)	350 µH min.	
Turns ratio	1CT:1CT	
Transmission characteristics @ 25°C, all four pairs		
Insertion Loss		
Frequency f, (MHz)	Limits (dB max.)	Typical Values (dB max.)
1.0-9.9	0.4+0.1*log(f)	0.5 @ 10 MHz
10-49.9	0.5+0.3*log(f/10)	0.7 @ 50 MHz
50-79.9	1+1.4*log(f/80)	1.0 @ 80 MHz
80-100	1.3+3*log(f/100)	1.3 @ 100 MHz
Return Loss		
Frequency f, (MHz)	Limits (dB min.)	Typical Values (dB min.)
1.0-39.9	18	18 @ 40 MHz
40-100	12-20*log(f/80)	10 @ 100 MHz
CMR		
Frequency f, (MHz)	Limits (dB min.)	Typical Values (dB min.)
1.0-100	30	30 @ 100 MHz
Next		
Frequency f, (MHz)	Limits (dB min.)	Typical Values (dB min.)
1.0-39.9	35	35 @ 40 MHz
40-100	33-20*log(f/50)	27 @ 100 MHz
Isolation PHY to wire side	2.25 kVDC/60sec	



THIS DRAWING CONTAINS INFORMATION THAT IS PROPRIETARY TO MOLEX ELECTRONIC TECHNOLOGIES, LLC AND SHOULD NOT BE USED WITHOUT WRITTEN PERMISSION

REVISED EC NO: 116686 DRWN: KREILLY CHKD: DSHEA REV APPR: DBYRNES	2017/05/09	GENERAL TOLERANCES (UNLESS SPECIFIED)	DIMENSION UNITS	SCALE	molex INV MX-MAG 6 CORE FE W/SHIELD		
	2017/09/12	(UNLESS SPECIFIED)	mm	1:1			
	2017/09/26	ANGULAR TOL ± 2.0 °	DRWN BY	DATE	PRODUCT CUSTOMER DRAWING		
		4 PLACES ±	KREILLY	2015/10/02			
		3 PLACES ±	CHK'D BY	DATE	SERIES MATERIAL NUMBER CUSTOMER 93635 SEE TABLE ON SHEET 2 GENERAL MARKET		
	2 PLACES ± 0.1	DBYRNES	2015/09/17				
	1 PLACE ± 0.2	APPR BY	DATE	DOCUMENT NUMBER DOC TYPE DOC PART SHEET NUMBER 936350001 PSD 000 3 OF 3			
	0 PLACES ±	STGRIFFIN	2015/11/19				
	DRAFT WHERE APPLICABLE MUST REMAIN WITHIN DIMENSIONS	DRAWING SIZE	THIRD ANGLE PROJECTION				
B		A2					