

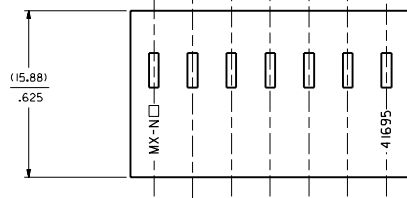
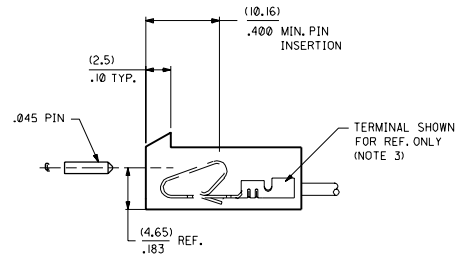
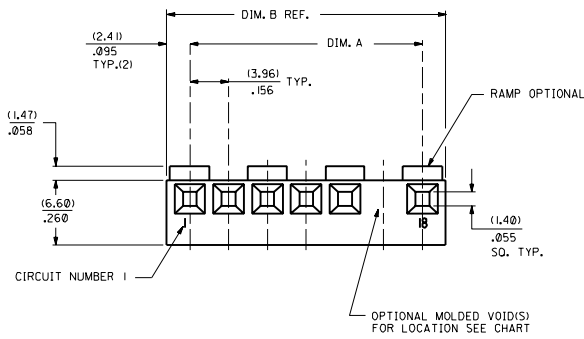
Distributed by:

JAMECO[®]
ELECTRONICS

www.Jameco.com ♦ 1-800-831-4242

The content and copyrights of the attached
material are the property of its owner.

Jameco Part Number 481422



NOTES:

- MATERIAL: GLASS FILLED POLYESTER, 94V-0, MOLDED NATURAL.
- MATES WITH .156 CENTER HEADERS AND .045 SQ. OR RD. PIN.
- HOUSING ACCEPTS STANDARD TERMINAL NOS.:
 2478 (18-24 AWG) WITH (2.79)/.110 MAX. INSULATION DIA.
 2578 (22-26 AWG) WITH (1.65)/.065 MAX. INSULATION DIA.
 OR TRIFURCON TERMINAL NOS.:
 6438 (18-24 AWG) WITH (2.79)/.110 MAX. INSULATION DIA.
 6838 (18-24 AWG) WITH (2.79)/.110 MAX. INSULATION DIA.
 7258 (22-26 AWG) WITH (1.65)/.065 MAX. INSULATION DIA.
- BOW .006 IN/IN.
- THIS PART CONFORMS TO PRODUCT SPEC. 08-50 & 40-02.
- .005 MAX. FLASH ALLOWED ALONG DIMENSION B AND IN LOCKING WINDOW.

41695 - * - * N - ## - * *

COLOR CODE
 N=MOLDED NATURAL
 B=BLACK

PEG LOCATION
 A=CKT NO. 1
 B=CKT NO 2 ETC

VOID CODE

BLANK=NO VOIDS
 NO.=NO. CORRESPONDS TO CKT. NO. VOIDED
 MULT. VOIDS=START WITH 51

NO. OF CKTS.

OPTION CODE

CODE	RAMP	POLARIZE	PACKAGING	RIB	PEG
A	NO	NO	BULK PER PK-41695-001	NO	NO
B	YES	NO	BULK PER PK-41695-002	NO	NO
D	YES	YES	BULK PER PK-41695-003	NO	NO
E	YES	NO	BULK PER PK-41695-002	YES	NO
F	NO	NO	TBD	NO	YES
G	END RAMP ONLY	YES	BULK PER PK-41695-003	NO	NO

NO. OF CKTS	DIM. A	DIM. B
1	NOT AVAILABLE	
2	(3.96+.05)	(8.79)
	.156+.002	.346
3	(7.92+.05)	(12.75)
	.312+.002	.502
4	(11.89+.05)	(16.71)
	.468+.002	.658
5	(15.85+.08)	(20.67)
	.624+.003	.814
6	(19.81+.08)	(24.64)
	.780+.003	.970
7	(23.77+.10)	(28.60)
	.936+.004	1.126
8	(27.74+.10)	(32.56)
	1.092+.004	1.282
9	(31.70+.10)	(36.53)
	1.248+.004	1.438
10	(35.66+.15)	(40.49)
	1.404+.006	1.594
11	(39.62+.15)	(44.45)
	1.560+.006	1.750
12	(43.59+.15)	(48.41)
	1.716+.006	1.906
13	(47.55+.15)	(52.37)
	1.872+.006	2.062
14	(51.51+.18)	(56.34)
	2.028+.007	2.218
15	(55.47+.18)	(60.30)
	2.184+.007	2.374
16	(59.44+.20)	(64.26)
	2.340+.008	2.530
17	(63.40+.20)	(68.22)
	2.496+.008	2.686
18	(67.36+.23)	(72.19)
	2.652+.009	2.842
19	(71.32+.20)	(76.15)
	2.808+.008	2.998
20	(75.28+.23)	(80.11)
	2.964+.009	3.154

REVISIONS ONLY ON CAD SYSTEM

MOLEX INCORPORATED

SEE CHART SD-41695

DATE: 04/05/86

SCALE: 1:1

REV. LTR. REVISIONS

ADD PACK SPEC UCR20011-8956 4-16-81 SAMTEC

REL. NO. 19-20 UCR2000-0644 7-5-80 SAMTEC

E1 E

3 E1

2 D9

E E REV.-NG TO PART UCR2000-0007 7-1-80

MFG. SH. REV. LTR. REVISIONS

DIMENSIONS SHOWN UNLESS NOTED INCH

FRONT VIEW

SCALE: 1:1

DATE: 04/05/86

SCALE: 1:1

REV. LTR. REVISIONS

ADD PACK SPEC UCR20011-8956 4-16-81 SAMTEC

REL. NO. 19-20 UCR2000-0644 7-5-80 SAMTEC

E1 E

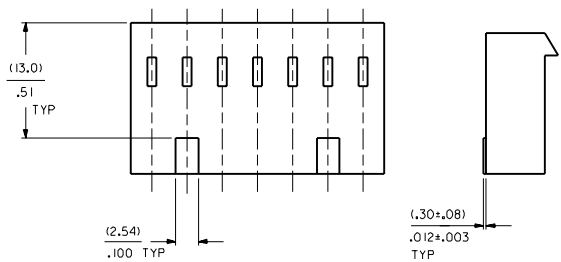
3 E1

2 D9

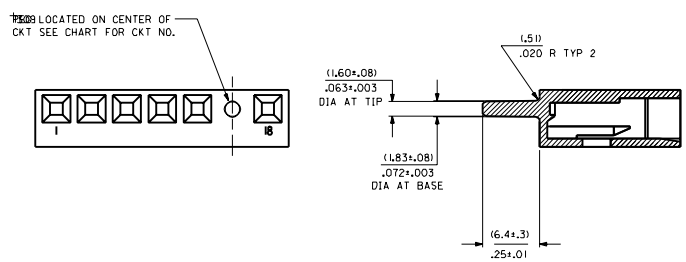
E E REV.-NG TO PART UCR2000-0007 7-1-80

MFG. SH. REV. LTR. REVISIONS

OPTION CODE E
RAMP WITH RIBS FOR OVER MOLDING



OPTION CODE F
PEG OPTION



41695-N-DN-*			41695-N-EN-*			41695-N-FN-***			
PART NO.	ENG. NO.	VOIDS	PART NO.	ENG. NO.	VOIDS	PART NO.	ENG. NO.	PEG	VOIDS
	NOT AVAILABLE			NOT AVAILABLE					
09-50-8023	41695-N-D2		09-50-8024	41695-N-E2			41695-N-FF-D	4	
09-50-8033	41695-N-D3			41695-N-E3			41695-N-FF-E	5	
09-50-8043	41695-N-D4			41695-N-E4					
09-50-8053	41695-N-D5			41695-N-E5					
09-50-8063	41695-N-D6		09-50-8064	41695-N-E6					
09-50-8073	41695-N-D7			41695-N-E7					
09-50-8083	41695-N-D8			41695-N-E8					
09-50-8093	41695-N-D9			41695-N-E9					
09-50-8103	41695-N-D10			41695-N-E10					
09-50-8113	41695-N-D11			41695-N-E11					
09-50-8123	41695-N-D12			41695-N-E12					
09-50-8133	41695-N-D13			41695-N-E13					
09-50-8143	41695-N-D14			41695-N-E14					
09-50-8153	41695-N-D15			41695-N-E15					
09-50-8163	41695-N-D16			41695-N-E16					
09-50-8173	41695-N-D17			41695-N-E17					
09-50-8183	41695-N-D18			41695-N-E18					
09-50-8193	41695-N-D19			41695-N-E19					
09-50-8203	41695-N-D20			41695-N-E20					
	41695-N-D15-12	12	09-50-9032	41695-N-E3-2	2				
09-50-9053	41695-N-D5-2	2	09-50-9042	41695-N-E4-2	2				
09-50-9094	41695-N-D9-3	3	09-50-9062	41695-N-E6-2	2				
09-50-9033	41695-N-D3-2	2	09-50-9072	41695-N-E7-2	2				
09-50-9043	41695-N-D4-2	2							
09-50-9063	41695-N-D6-2	2							
09-50-9073	41695-N-D7-2	2							
09-50-9044	41695-N-D4-3	3							

SEE SHEET 1	C5	SEE SHEET 1	SEE SHEET 1	SEE SHEET 1	SEE SHEET 1	SEE SHEET 1	SEE SHEET 1	SEE SHEET 1	SEE SHEET 1
SEE SHEET 1	C4	SEE SHEET 1	SEE SHEET 1	SEE SHEET 1	SEE SHEET 1	SEE SHEET 1	SEE SHEET 1	SEE SHEET 1	SEE SHEET 1
SEE SHEET 1	C3	SEE SHEET 1	SEE SHEET 1	SEE SHEET 1	SEE SHEET 1	SEE SHEET 1	SEE SHEET 1	SEE SHEET 1	SEE SHEET 1
SEE SHEET 1	B16	SEE SHEET 1	SEE SHEET 1	SEE SHEET 1	SEE SHEET 1	SEE SHEET 1	SEE SHEET 1	SEE SHEET 1	SEE SHEET 1
SEE SHEET 1	B15	SEE SHEET 1	SEE SHEET 1	SEE SHEET 1	SEE SHEET 1	SEE SHEET 1	SEE SHEET 1	SEE SHEET 1	SEE SHEET 1
E1	SEE SHEET 1	B13	SEE SHEET 1	SEE SHEET 1	SEE SHEET 1	SEE SHEET 1	SEE SHEET 1	SEE SHEET 1	SEE SHEET 1
CB	SEE SHEET 1	B11	SEE SHEET 1	SEE SHEET 1	SEE SHEET 1	SEE SHEET 1	SEE SHEET 1	SEE SHEET 1	SEE SHEET 1
LTR.	REVISIONS	LTR.	REVISIONS	LTR.	REVISIONS	LTR.	REVISIONS	LTR.	REVISIONS

ENGINEERING DRAWING CHECKED BY: DATE:

DESIGNED BY: DATE:

DRAWN BY: DATE:

CHECKED BY: DATE:

DATE:

SCALE:

APP:

LENZ

REVISE ONLY ON CAD SYSTEM

(3,961) / 1566 CONNECTOR HOUSING FOR KK CRIMP TYPE TERMINALS (2139 & 6442 IN POLYESTER)

MOLEX INCORPORATED SHEET NO. 3 DATE 09/01/87

SEE CHARTS **SD-41695**

FILE NO. 541695X3 MULTIPLE SHEETS BEING USED IN THIS DRAWING

APP. LTR. DATE SCALE 2