

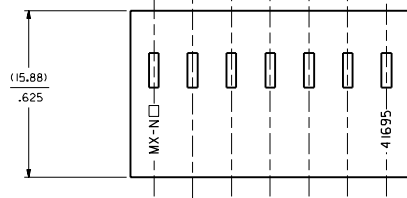
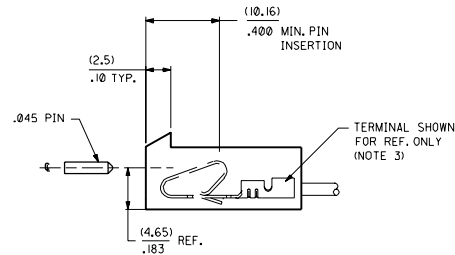
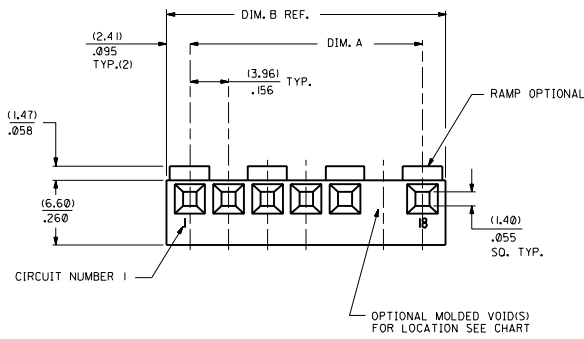
Distributed by:

JAMECO[®]
ELECTRONICS

www.Jameco.com ♦ 1-800-831-4242

The content and copyrights of the attached
material are the property of its owner.

Jameco Part Number 481481



NOTES:

- MATERIAL: GLASS FILLED POLYESTER, 94V-0, MOLDED NATURAL.
- MATES WITH .156 CENTER HEADERS AND .045 SQ. OR RD. PIN.
- HOUSING ACCEPTS STANDARD TERMINAL NOS.:
 2478 (18-24 AWG) WITH (2.79)/.110 MAX. INSULATION DIA.
 2578 (22-26 AWG) WITH (1.65)/.065 MAX. INSULATION DIA.
 OR TRIFURCON TERMINAL NOS.:
 6438 (18-24 AWG) WITH (2.79)/.110 MAX. INSULATION DIA.
 6838 (18-24 AWG) WITH (2.79)/.110 MAX. INSULATION DIA.
 7258 (22-26 AWG) WITH (1.65)/.065 MAX. INSULATION DIA.
- BOW .006 IN/IN.
- THIS PART CONFORMS TO PRODUCT SPEC. 08-50 & 40-02.
- .005 MAX. FLASH ALLOWED ALONG DIMENSION B AND IN LOCKING WINDOW.

41695 - * - * N - ## - * *

COLOR CODE
 N=MOLDED NATURAL
 B=BLACK

PEG LOCATION
 A=CKT NO. 1
 B=CKT NO 2 ETC

VOID CODE

BLANK=NO VOIDS
 NO.=NO. CORRESPONDS TO CKT. NO. VOIDED
 MULT. VOIDS=START WITH 51

NO. OF CKTS.

OPTION CODE

CODE	RAMP	POLARIZE	PACKAGING	RIB	PEG
A	NO	NO	BULK PER PK-41695-001	NO	NO
B	YES	NO	BULK PER PK-41695-002	NO	NO
D	YES	YES	BULK PER PK-41695-003	NO	NO
E	YES	NO	BULK PER PK-41695-002	YES	NO
F	NO	NO	TBD	NO	YES
G	END RAMP ONLY	YES	BULK PER PK-41695-003	NO	NO

NO. OF CKTS	DIM. A	DIM. B
1	NOT AVAILABLE	
2	(3.96+.05)	(8.79)
	.156+.002	.346
3	(7.92+.05)	(12.75)
	.312+.002	.502
4	(11.89+.05)	(16.71)
	.468+.002	.658
5	(15.85+.08)	(20.67)
	.624+.003	.814
6	(19.81+.08)	(24.64)
	.780+.003	.970
7	(23.77+.10)	(28.60)
	.936+.004	1.126
8	(27.74+.10)	(32.56)
	1.092+.004	1.282
9	(31.70+.10)	(36.53)
	1.248+.004	1.438
10	(35.66+.15)	(40.49)
	1.404+.006	1.594
11	(39.62+.15)	(44.45)
	1.560+.006	1.750
12	(43.59+.15)	(48.41)
	1.716+.006	1.906
13	(47.55+.15)	(52.37)
	1.872+.006	2.062
14	(51.51+.18)	(56.34)
	2.028+.007	2.218
15	(55.47+.18)	(60.30)
	2.184+.007	2.374
16	(59.44+.20)	(64.26)
	2.340+.008	2.530
17	(63.40+.20)	(68.22)
	2.496+.008	2.686
18	(67.36+.23)	(72.19)
	2.652+.009	2.842
19	(71.32+.20)	(76.15)
	2.808+.008	2.998
20	(75.28+.23)	(80.11)
	2.964+.009	3.154

ADD PACK SPEC UCR20011-8956 4-16-01 SAMTEC

REL. NO. 19-20 UCR2000-0644 7-5-00 SAMTEC

3 E1 E REV. -NC TO PART UCR2000-0007 7-1-00

1 F

MFG. SH. REV. LTR. REVISIONS

DIMENSIONS SHOWN UNLESS NOTED INCH

PREC. TOLERANCE UNLESS NOTED OTHERWISE UNLESS OTHERWISE SPECIFIED

PLATE	±	INCH	METRIC
1	±	0.10	
2	±	0.14	± 0.25
1	±	0.36	

DRIFT: THESE APPLICABLE MUST REMAIN WITH DIMENSIONS

DATE: 04/05/86

DESIGN: MOLEX INCORPORATED

SCALE: 1:1

REV. 4

SEE CHART SD-41695

NO. OF CKTS: 20

NO. OF DIMENSIONS: 10

NO. OF PARTS: 1

NO. OF DRAWINGS: 1

NO. OF SHEETS: 1

NO. OF FIGURES: 1

NO. OF TABLES: 1

NO. OF NOTES: 1

NO. OF DIMENSIONS: 10

NO. OF PARTS: 1

NO. OF DRAWINGS: 1

NO. OF SHEETS: 1

NO. OF FIGURES: 1

NO. OF TABLES: 1

NO. OF NOTES: 1

