

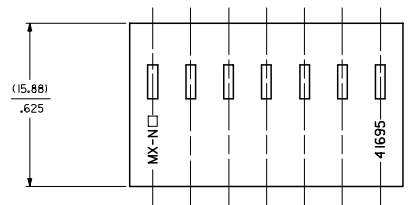
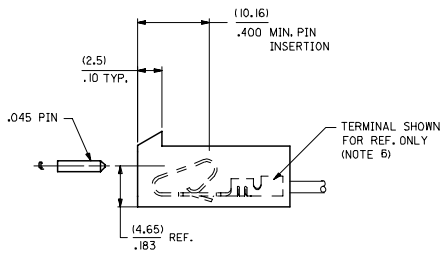
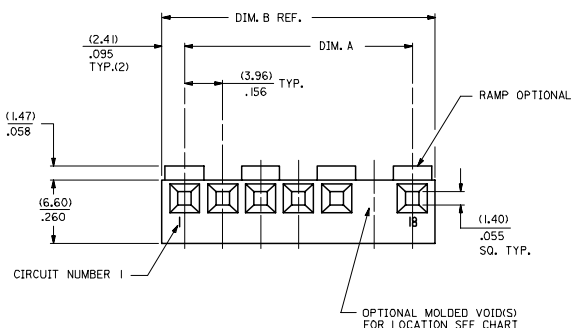
Distributed by:

JAMECO[®]
ELECTRONICS

www.Jameco.com ♦ 1-800-831-4242

The content and copyrights of the attached
material are the property of its owner.

Jameco Part Number 481481



NO. OF CKTS	DIM. A	DIM. B
1	NOT AVAILABLE	
2	(3.96+.05) .156+.002	(8.79) .346
3	(7.92+.05) .312+.002	(12.75) .502
4	(11.89+.05) .468+.002	(16.71) .658
5	(15.85+.08) .624+.003	(20.67) .814
6	(19.81+.08) .780+.003	(24.64) .970
7	(23.77+.10) .936+.004	(28.60) 1.126
8	(27.74+.10) 1.092+.004	(32.56) 1.282
9	(31.70+.10) 1.248+.004	(36.53) 1.438
10	(35.66+.15) 1.404+.006	(40.49) 1.594
11	(39.62+.15) 1.560+.006	(44.45) 1.750
12	(43.59+.15) 1.716+.006	(48.41) 1.906
13	(47.55+.15) 1.872+.006	(52.37) 2.062
14	(51.51+.18) 2.028+.007	(56.34) 2.218
15	(55.47+.18) 2.184+.007	(60.30) 2.374
16	(59.44+.20) 2.340+.008	(64.26) 2.530
17	(63.40+.20) 2.496+.008	(68.22) 2.686
18	(67.36+.23) 2.652+.009	(72.19) 2.842
19	(71.32+.20) 2.808+.008	(76.15) 2.998
20	(75.28+.23) 2.964+.009	(80.11) 3.154

41695 - * - * N - ## - * *

COLOR CODE
N=MOLDED NATURAL
B=BLACK

PEG LOCATION
A=CKT NO. 1
B=CKT NO 2 ETC

VOID CODE
BLANK=NO VOIDS
NO.=NO. CORRESPONDS TO CKT. NO. VOIDED
MULT. VOIDS=START WITH 51

NO. OF CKTS.

CODE	RAMP	POLARIZE	PACKAGING	RIB	PEG
A	NO	NO	BULK PER PK-41695-001	NO	NO
B	YES	NO	BULK PER PK-41695-002	NO	NO
D	YES	YES	BULK PER PK-41695-003	NO	NO
E	YES	NO	BULK PER PK-41695-002	YES	NO
F	NO	NO	TBD	NO	YES
G	END RAMP ONLY	YES	BULK PER PK-41695-003	NO	NO

- NOTES:
1. MATERIAL: GLASS FILLED POLYESTER, 94V-0, MOLDED NATURAL.
 2. FINISH: SEE TERMINAL DRAWINGS
 3. PRODUCT SPECIFICATION: PS-08-50 AND PS-40-02
 4. PACKAGING INFORMATION: SEE LEGEND
 5. MATES WITH (3.96)/.156 CENTER HEADERS AND (1.14)/.045 SQUARE OR ROUND PINS
 6. HOUSING ACCEPTS STANDARD TERMINAL NOS.:
2478 (18-24 AWG) WITH (2.79)/.110 MAX. INSULATION DIA.
2578 (22-26 AWG) WITH (1.65)/.065 MAX. INSULATION DIA.
OR TRIFURCON TERMINAL NOS.:
6438 (18-22 AWG) WITH (2.79)/.110 MAX. INSULATION DIA.
6838 (18-24 AWG) WITH (2.79)/.110 MAX. INSULATION DIA.
7258 (22-26 AWG) WITH (1.65)/.065 MAX. INSULATION DIA.
 7. BOW (.006 MM/MM) / .006 IN./IN.
 8. (0.13)/.005 MAX. FLASH ALLOWED ALONG DIMENSION B AND N LOCKING WINDOW.

4	LET
3	LET
2	E
1	LET
	SHT/REV

REVISE NOTES DEC NO: UCP2006-0162 DRAWN: JUNE 2005/07/29 CHKD: ADRI APPROV: SM TH 2005/08/01	QUALITY SYMBOLS ▽=0 ▽=0	GENERAL TOLERANCES (UNLESS SPECIFIED) <table border="1"> <tr><th></th><th>mm</th><th>INCH</th></tr> <tr><td>4 PLACES ±</td><td>---</td><td>±---</td></tr> <tr><td>3 PLACES ±</td><td>---</td><td>±.010</td></tr> <tr><td>2 PLACES ±</td><td>0.25</td><td>±.014</td></tr> <tr><td>1 PLACE ±</td><td>0.36</td><td>±---</td></tr> </table>		mm	INCH	4 PLACES ±	---	±---	3 PLACES ±	---	±.010	2 PLACES ±	0.25	±.014	1 PLACE ±	0.36	±---	DIMENSION STYLE MM/IN	SCALE ---	DESIGN UNITS INCH	THIRD ANGLE PROJECTION
		mm	INCH																		
	4 PLACES ±	---	±---																		
	3 PLACES ±	---	±.010																		
2 PLACES ±	0.25	±.014																			
1 PLACE ±	0.36	±---																			
DESCRIPTION (3.96)/.156 CENTERLINE CONNECTOR HOUSING FOR KK CRIMP TERMINALS	DRAWN BY SKOWRONSKI	DATE 04/05/86	TITLE (3.96)/.156 CENTERLINE CONNECTOR HOUSING FOR KK CRIMP TERMINALS	APPROVED BY PATEL	DATE 04/05/86	MOLEX INCORPORATED															
DRAFT WHERE APPLICABLE MUST REMAIN WITHIN DIMENSIONS	SEE CHART	SD-41695	INCORPORATED AND SHOULD NOT BE USED WITHOUT WRITTEN PERMISSION	DOCUMENT NO. SD-41695	SHEET NO. 1 OF 4																

M

L

K

J

I

H

G

F

E

D

C

B

A

M

L

K

J

I

H

G

F

E

D

C

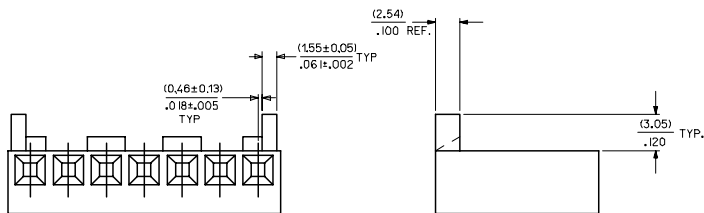
B

A

41695-N-AN**			41695-N-BN**					
PART NO.	ENG. NO.	VOIDS	PART NO.	ENG. NO.	VOIDS	PART NO.	ENG. NO.	VOIDS
	NOT AVAILABLE			NOT AVAILABLE				
09-50-8020	41695-N-A2		09-50-8021	41695-N-B2				
09-50-8030	41695-N-A3		09-50-8031	41695-N-B3				
09-50-8040	41695-N-A4		09-50-8041	41695-N-B4				
09-50-8050	41695-N-A5		09-50-8051	41695-N-B5				
09-50-8060	41695-N-A6		09-50-8061	41695-N-B6				
09-50-8070	41695-N-A7		09-50-8071	41695-N-B7				
09-50-8080	41695-N-A8		09-50-8081	41695-N-B8				
09-50-8090	41695-N-A9		09-50-8091	41695-N-B9				
09-50-8100	41695-N-A10		09-50-8101	41695-N-B10				
09-50-8110	41695-N-A11		09-50-8111	41695-N-B11				
09-50-8120	41695-N-A12		09-50-8121	41695-N-B12				
09-50-8130	41695-N-A13		09-50-8131	41695-N-B13				
09-50-8140	41695-N-A14		09-50-8141	41695-N-B14				
09-50-8150	41695-N-A15		09-50-8151	41695-N-B15				
09-50-8160	41695-N-A16		09-50-8161	41695-N-B16				
09-50-8170	41695-N-A17		09-50-8171	41695-N-B17				
09-50-8180	41695-N-A18		09-50-8181	41695-N-B18				
09-50-8190	41695-N-A19		09-50-8191	41695-N-B19				
09-50-8200	41695-N-A20		09-50-8201	41695-N-B20				
09-50-9085	41695-N-A8-2	2	09-50-9030	41695-N-B3-2	2			
41695-0001	41695-N-A6-3	3		41695-N-B5-2	2			
				41695-N-B9-2	2			
				41695-N-B11-2	2			
				09-50-9121	41695-N-B12-2	2		
					41695-N-B14-2	2		
				09-50-9150	41695-N-B15-14	14		
				09-50-9060	41695-N-B6-5	5		
				09-50-9070	41695-N-B7-6	6		
				09-50-9071	41695-N-B7-2	2		
				09-50-9040	41695-N-B4-3	3		
				09-50-9090	41695-N-B9-7	7		
					41695-N-B14-13	13		
				09-50-9136	41695-N-B13-5	5		
				09-50-9137	41695-N-B13-8	8		
				09-50-9050	41695-N-B5-51	2,4		
				09-50-9061	41695-N-B6-3	3		
				09-50-9080	41695-N-B8-2	2		

OPTION CODE D

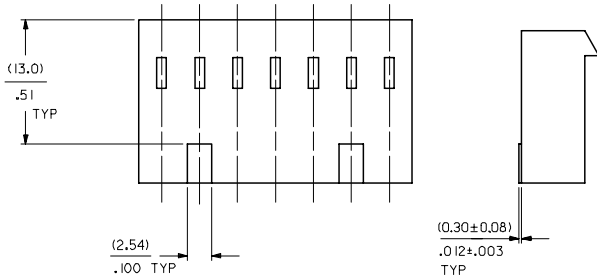
RAMP WITH POLARIZING PEGS (RIBS)



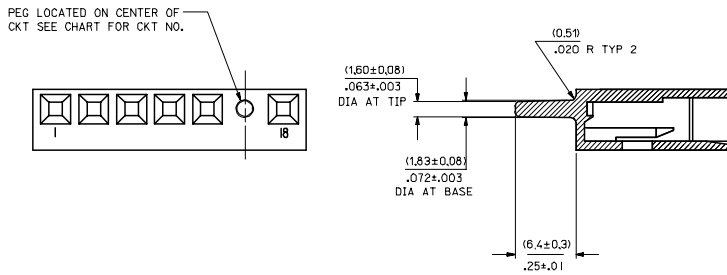
WHEN MATING WITH BREAKAWAY HEADERS THE FRICTION LOCK WALL MUST BE REMOVED

REVISE DIMENSIONS EC NO: UCP2006-0162 2005/07/29 MDRWIN:JLONE CHKCAD:RR 2005/07/29 APPROV:SM:TH 2005/08/01	QUALITY SYMBOLS ▽=0 ▽=0	GENERAL TOLERANCES (UNLESS SPECIFIED) mm INCH		DIMENSION STYLE MM/IN		SCALE ---	DESIGN UNITS INCH	THIRD ANGLE PROJECTION
		4 PLACES ± --- ± --- 3 PLACES ± --- ± --- 2 PLACES ± --- ± --- 1 PLACE ± --- ± ---	DRAWN BY SAMIEC DATE 09/22/86	TITLE (3.96)/156 CENTERLINE CONNECTOR HOUSING FOR KK CRIMP TERMINAL				
		ANGULAR ±1/2°	CHECKED BY PATEL DATE 09/22/86	MOLEX INCORPORATED				
		DRAFT WHERE APPLICABLE MUST REMAIN WITHIN DIMENSIONS	APPROVED BY LENZ DATE 09/22/86	MATERIAL NO. SEE CHART	DOCUMENT NO. SD-41695	SHEET NO. 2 OF 4		

OPTION CODE E
RAMP WITH RIBS FOR OVER MOLDING



OPTION CODE F
PEG OPTION



41695-N-DN**

PART NO.	ENG. NO.	VOIDS
	NOT AVAILABLE	
09-50-8023	41695-N-D2	
09-50-8033	41695-N-D3	
09-50-8043	41695-N-D4	
09-50-8053	41695-N-D5	
09-50-8063	41695-N-D6	
09-50-8073	41695-N-D7	
09-50-8083	41695-N-D8	
09-50-8093	41695-N-D9	
09-50-8103	41695-N-D10	
09-50-8113	41695-N-D11	
09-50-8123	41695-N-D12	
09-50-8133	41695-N-D13	
09-50-8143	41695-N-D14	
09-50-8153	41695-N-D15	
09-50-8163	41695-N-D16	
09-50-8173	41695-N-D17	
09-50-8183	41695-N-D18	
09-50-8193	41695-N-D19	
09-50-8203	41695-N-D20	
	41695-N-D15-12	12
09-50-9053	41695-N-D5-2	2
09-50-9094	41695-N-D9-3	3
09-50-9033	41695-N-D3-2	2
09-50-9043	41695-N-D4-2	2
09-50-9063	41695-N-D6-2	2
09-50-9073	41695-N-D7-2	2
09-50-9044	41695-N-D4-3	3

41695-N-EN**

PART NO.	ENG. NO.	VOIDS
	NOT AVAILABLE	
09-50-8024	41695-N-E2	
	41695-N-E3	
	41695-N-E4	
	41695-N-E5	
09-50-8064	41695-N-E6	
	41695-N-E7	
	41695-N-E8	
	41695-N-E9	
	41695-N-E10	
	41695-N-E11	
	41695-N-E12	
	41695-N-E13	
	41695-N-E14	
	41695-N-E15	
	41695-N-E16	
	41695-N-E17	
	41695-N-E18	
	41695-N-E19	
	41695-N-E20	
09-50-9032	41695-N-E3-2	2
09-50-9042	41695-N-E4-2	2
09-50-9062	41695-N-E6-2	2
09-50-9072	41695-N-E7-2	2

41695-N-FN***

PART NO.	ENG. NO.	PEG	VOIDS
	41695-N-F7-D	4	
	41695-N-F7-E	5	

UPDATE TITLE BLOCK DEC NO: UCP2006-0162 DRAWN BY: JUNE 2005/07/29 CHECKED BY: CHIKADARR 2005/07/29 APPROVED BY: TH 2005/08/01	QUALITY SYMBOLS ▽=0 ▽=0	GENERAL TOLERANCES (UNLESS SPECIFIED) mm INCH 4 PLACES ± --- ± --- 3 PLACES ± --- ± --- 2 PLACES ± --- ± --- 1 PLACE ± --- ± --- ANGULAR ±1/2°	DIMENSION STYLE MM/IN DRAWN BY: SAMIEC DATE: 09/01/87 CHECKED BY: DATE: 09/01/87 APPROVED BY: LENZ DATE: 09/01/87	SCALE: --- DESIGN UNITS: INCH THIRD ANGLE PROJECTION	TITLE: (3.96)/156 CENTERLINE CONNECTOR HOUSING FOR KK CRIMP TERMINAL MOLEX INCORPORATED	
	MATERIAL NO. SEE CHART	DOCUMENT NO. SD-41695	SHEET NO. 3 OF 4			
	DRAFT WHERE APPLICABLE MUST REMAIN WITHIN DIMENSIONS			THIS DRAWING CONTAINS INFORMATION THAT IS PROPRIETARY TO MOLEX INCORPORATED AND SHOULD NOT BE USED WITHOUT WRITTEN PERMISSION		
	SIZE D			SIZE D		