

FEATURES AND SPECIFICATIONS

Features and Benefits

- Sizes 2 to 20 circuits
- Locking ramp feature available
- Polarizing rib feature available for side-to-side polarization
- Offset pin entry holes provide 180° polarization
- Accepts entire line of .156" contacts
- Optional voids available

Reference Information

Product Specification: PS-08-50

Packaging: Bag

UL File No.: E29179

CSA File No.: LR19980

Mates With: Molex KK 3.96mm (.156") pitch headers or 1.14mm (.045") pins

Use With: [2478](#), [2578](#), [6438](#), [6838](#), [7258](#) and

[8818](#) terminals

Designed In: Inches

Electrical

Voltage: 250V AC max.

Current: Phosphor Bronze—7.0A max.

Brass—5.0A max.

Contact Resistance: 6mΩ max.

Dielectric Withstanding Voltage: 1500V AC

Insulation Resistance: 500K MΩ min.

Mechanical

Contact Insertion Force: 1.8kg (4 lb) max.

Contact Retention to Housing: 3.6kg (8 lb) min.

Mating Force: Square pin—2.25 lb max.

Round pin—1.60 lb max.

Unmating Force: Square pin—0.84 lb min.

Round pin—0.60 lb min.

Normal Force: 0.75kg (1.65 lb)

Durability: 25 cycles max.

Physical

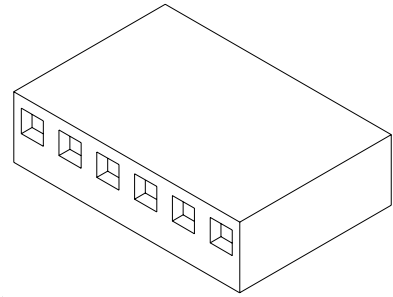
Housing: Polyester, UL 94V-0

Operating Temperature: 0 to +75°C



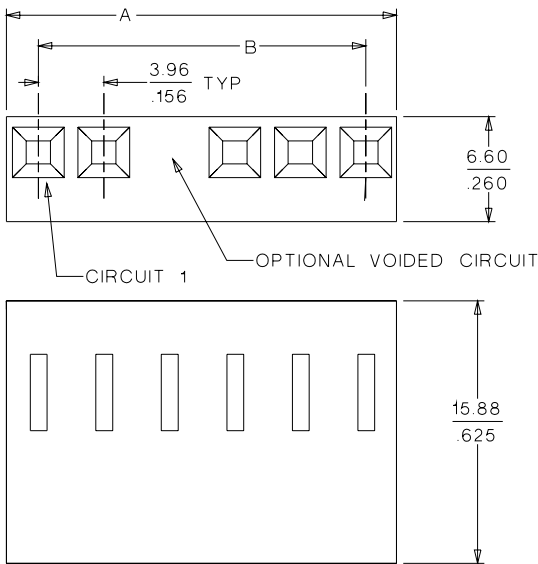
3.96mm (.156") Pitch KK[®] Crimp Terminal Housing

41695

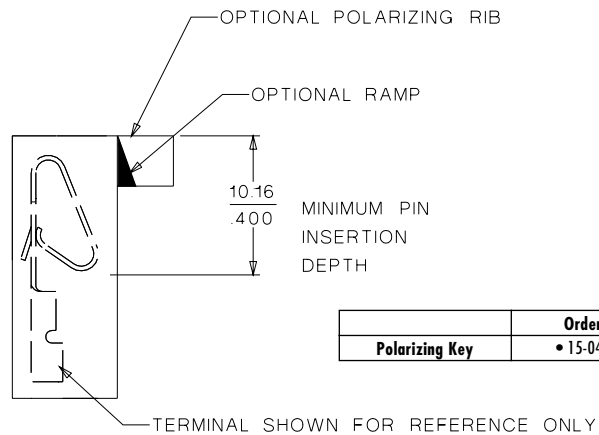


D
3.00 to 7.92mm (.118 to .312") Pitch

CATALOG DRAWING (FOR REFERENCE ONLY)



Note: When mating polarizing rib version with breakaway friction lock header or polarizing wall series, the end friction lock or polarizing wall of header must be removed.



ORDERING INFORMATION AND DIMENSIONS

Circuits	Order No.			Dimension	
	With Locking Ramp and Polarizing Ribs	Without Locking Ramp or Polarizing Ribs	With Locking Ramp Only	A	B
2	• 09-50-8023	• 09-50-8020	• 09-50-8021	8.79 (.346)	3.96 (.156)
3	• 09-50-8033	• 09-50-8030	• 09-50-8031	12.75 (.502)	7.92 (.312)
4	• 09-50-8043	• 09-50-8040	• 09-50-8041	16.71 (.658)	11.89 (.468)
5	• 09-50-8053	• 09-50-8050	• 09-50-8051	20.67 (.814)	15.85 (.624)
6	• 09-50-8063	• 09-50-8060	• 09-50-8061	24.64 (.970)	19.81 (.780)
7	• 09-50-8073	• 09-50-8070	• 09-50-8071	28.60 (1.126)	23.77 (.936)
8	• 09-50-8083	• 09-50-8080	• 09-50-8081	32.56 (1.282)	27.74 (1.092)
9	• 09-50-8093	• 09-50-8090	• 09-50-8091	36.53 (1.438)	31.70 (1.248)
10	• 09-50-8103	• 09-50-8100	• 09-50-8101	40.49 (1.594)	35.66 (1.404)
11	• 09-50-8113	• 09-50-8110	• 09-50-8111	44.45 (1.750)	39.62 (1.560)

• US Standard Product, available through Molex franchised distributors

Circuits	Order No.			Dimension	
	With Locking Ramp and Polarizing Ribs	Without Locking Ramp or Polarizing Ribs	With Locking Ramp Only	A	B
12	• 09-50-8123	• 09-50-8120	• 09-50-8121	48.41 (1.906)	43.59 (1.716)
13	• 09-50-8133	• 09-50-8130	• 09-50-8131	52.37 (2.062)	47.55 (1.872)
14	• 09-50-8143	• 09-50-8140	• 09-50-8141	56.34 (2.218)	51.51 (2.028)
15	• 09-50-8153	• 09-50-8150	• 09-50-8151	60.30 (2.374)	55.47 (2.184)
16	• 09-50-8163	• 09-50-8160	• 09-50-8161	64.26 (2.530)	59.44 (2.340)
17	• 09-50-8173	• 09-50-8170	• 09-50-8171	68.22 (2.686)	63.40 (2.496)
18	• 09-50-8183	• 09-50-8180	• 09-50-8181	72.19 (2.842)	67.36 (2.652)
19	• 09-50-8193	• 09-50-8190	• 09-50-8191	76.15 (2.998)	71.32 (2.808)
20	• 09-50-8203	• 09-50-8200	• 09-50-8201	80.11 (3.154)	75.28 (2.964)