

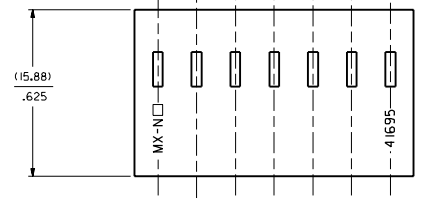
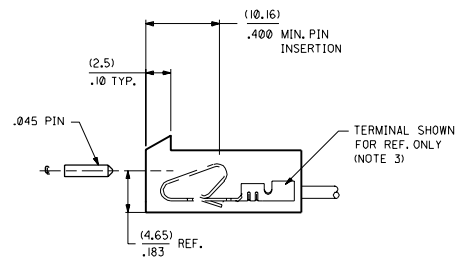
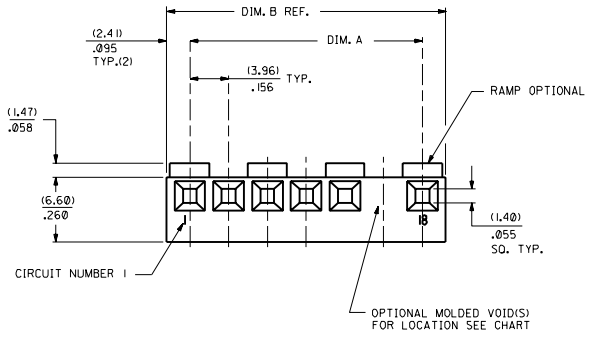
Distributed by:

JAMECO[®]
ELECTRONICS

www.Jameco.com ♦ 1-800-831-4242

The content and copyrights of the attached
material are the property of its owner.

Jameco Part Number 481490



NO. OF CKTS	DIM. A	DIM. B
1	NOT AVAILABLE	
2	(3.96+.05)	(8.79)
3	(7.92+.05)	(12.75)
4	(11.89+.05)	(16.71)
5	(15.85+.08)	(20.67)
6	(19.81+.08)	(24.64)
7	(23.77+.10)	(28.60)
8	(27.74+.10)	(32.56)
9	(31.70+.10)	(36.53)
10	(35.66+.15)	(40.49)
11	(39.62+.15)	(44.45)
12	(43.59+.15)	(48.41)
13	(47.55+.15)	(52.37)
14	(51.51+.18)	(56.34)
15	(55.47+.18)	(60.30)
16	(59.44+.20)	(64.26)
17	(63.40+.20)	(68.22)
18	(67.36+.23)	(72.19)
19	(71.32+.20)	(76.15)
20	(75.28+.23)	(80.11)
	2.964+.009	3.154

- NOTES:
- MATERIAL: GLASS FILLED POLYESTER, 94V-0, MOLDED NATURAL.
 - MATES WITH .156 CENTER HEADERS AND .045 SQ. OR RD. PIN.
 - HOUSING ACCEPTS STANDARD TERMINAL NOS.:
 - 2478 (18-24 AWG) WITH (2.79)/.110 MAX. INSULATION DIA.
 - 2578 (22-26 AWG) WITH (1.65)/.065 MAX. INSULATION DIA. OR TRIFURCON TERMINAL NOS.:
 - 6438 (18-24 AWG) WITH (2.79)/.110 MAX. INSULATION DIA.
 - 6838 (18-24 AWG) WITH (2.79)/.110 MAX. INSULATION DIA.
 - 7258 (22-26 AWG) WITH (1.65)/.065 MAX. INSULATION DIA.
 - BOW .006 IN/IN.
 - THIS PART CONFORMS TO PRODUCT SPEC. 08-50 & 40-02.
 - .005 MAX. FLASH ALLOWED ALONG DIMENSION B AND IN LOCKING WINDOW.

41695 - * - * N - ## - * *

COLOR CODE
N=MOLDED NATURAL
B=BLACK

PEG LOCATION
A=CKT NO. 1
B=CKT NO 2 ETC

OPTION CODE

CODE	RAMP	POLARIZE	PACKAGING	RIB	PEG
A	NO	NO	BULK PER PK-41695-001	NO	NO
B	YES	NO	BULK PER PK-41695-002	NO	NO
D	YES	YES	BULK PER PK-41695-003	NO	NO
E	YES	NO	BULK PER PK-41695-002	YES	NO
F	NO	NO	TBD	NO	YES
G	END RAMP ONLY	YES	BULK PER PK-41695-003	NO	NO

VOID CODE
BLANK=NO VOIDS
NO.-NO. CORRESPONDS TO CKT. NO. VOIDED
MULT. VOIDS=START WITH 51

NO. OF CKTS.

F	ADD PACK SPEC
4 E	REL. NO. 19-20
3 E I	UCR2000-0644
2 D 9	7-5-00 SAMEC.
1 E	REV. -NG TO PART UCR2000-0007
	7-1-00

MOLEX INCORPORATED

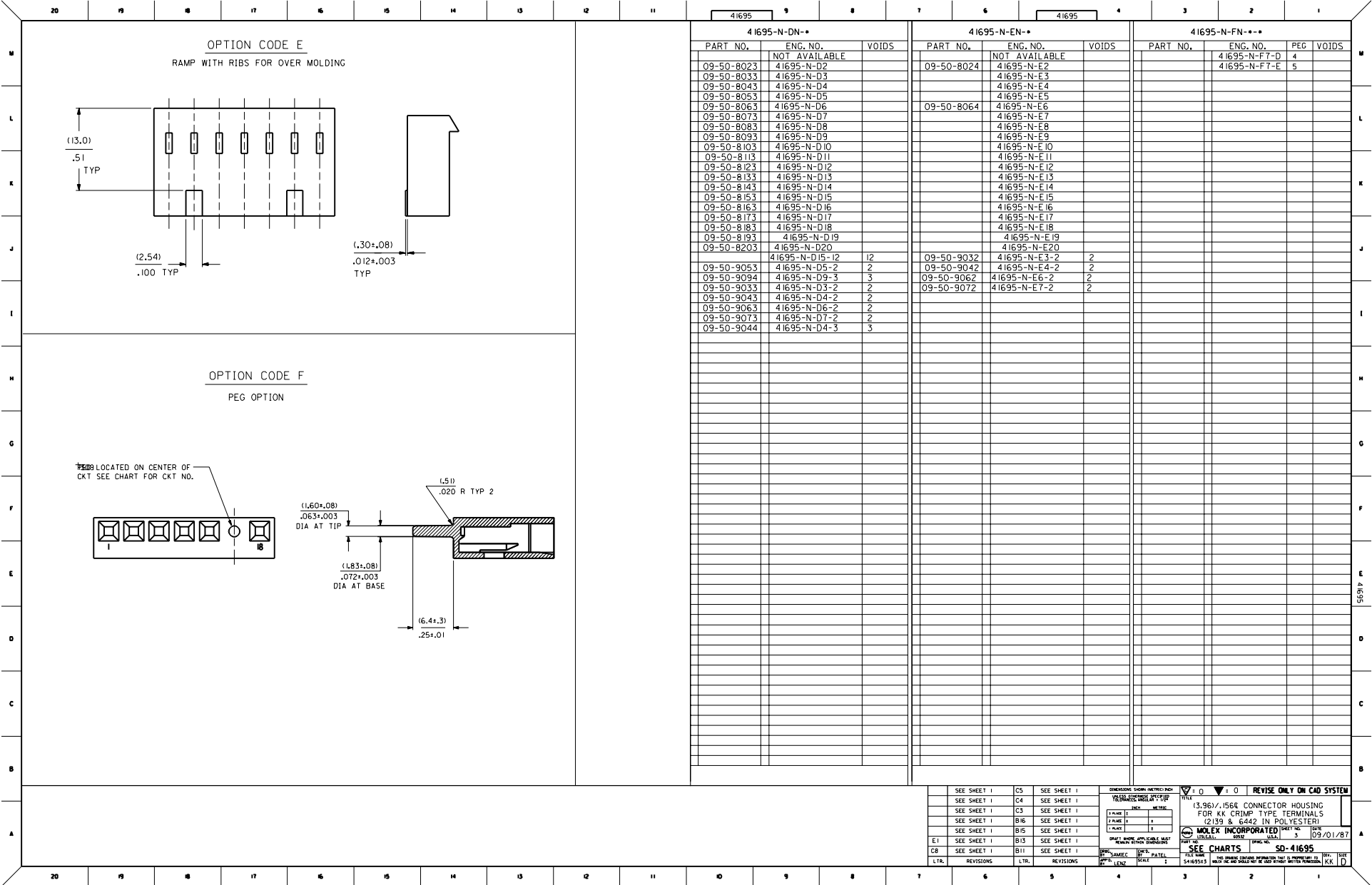
SEE CHART SD-41695

REVISIONS ONLY ON CAD SYSTEM

REVISIONS

DATE: 04/05/86

SCALE: --:--



SEE SHEET I	C5	SEE SHEET I	SEE SHEET I	REVISIONS ONLY ON CAD SYSTEM
SEE SHEET I	C4	SEE SHEET I		
SEE SHEET I	C3	SEE SHEET I		
SEE SHEET I	B16	SEE SHEET I		
SEE SHEET I	B15	SEE SHEET I		
SEE SHEET I	B13	SEE SHEET I		
SEE SHEET I	B11	SEE SHEET I		
LTR.	REVISIONS	LTR.	REVISIONS	

MOLEX INCORPORATED

(3,961/1566) CONNECTOR HOUSING FOR KK CRIMP TYPE TERMINALS (2139 & 6442 IN POLYESTER)

SEE CHARTS SD-41695

DATE: 09/01/87

SCALE: 2

SHEET NO. 3

REV. 1

APP. LENZ

CHK. DATE

DATE

SCALE

541695X3

MULTI-HOLE HOUSING FOR KK CRIMP TYPE TERMINALS

REV. 1

SHEET NO. 3