

NO. OF CKTS	DIM. A	DIM. B
1	NOT AVAILABLE	
2	(6.79) .346	(3.96±.05) .156±.002
3	(12.75) .502	(7.92±.08) .312±.003
4	(16.71) .658	(11.89±.08) .468±.003
5	(20.67) .814	(15.85±.08) .624±.003
6	(24.64) .970	(19.81±.10) .780±.004
7	(28.60) 1.126	(23.77±.10) .936±.004
8	(32.56) 1.282	(27.74±.10) 1.092±.004
9	(36.53) 1.438	(31.70±.10) 1.248±.004
10	(40.49) 1.594	(35.66±.15) 1.404±.006
11	(44.45) 1.750	(39.62±.15) 1.560±.006
12	(48.41) 1.906	(43.59±.15) 1.716±.006
13	(52.37) 2.062	(47.55±.15) 1.872±.006
14	(56.34) 2.218	(51.51±.19) 2.028±.007
15	(60.30) 2.374	(55.47±.18) 2.184±.007
16	(64.26) 2.530	(59.44±.20) 2.340±.008
17	(68.22) 2.686	(63.40±.20) 2.496±.008
18	(72.19) 2.842	(67.36±.23) 2.652±.009
19	(76.15) 2.998	(71.32±.23) 2.808±.009
20	(80.11) 3.154	(75.28±.23) 2.964±.009

- NOTES:
- MATERIAL: N - GLASS FILLED POLYESTER, UL94V-0, MOLDED NATURAL
B - GLASS FILLED POLYESTER, UL94V-0, MOLDED BLACK
G - UL94V-0 PA6 NYLON, IEC 60335-1, 4th EDITION GLOW WIRE CAPABLE, COLOR: BLACK
 - FINISH: SEE TERMINAL DRAWINGS
 - PRODUCT SPECIFICATION: PS-08-50 AND PS-40-02
 - PACKAGING INFORMATION: SEE LEGEND
 - MATES WITH (3.96)/.156 CENTER HEADERS AND (1.41)/.045 SQUARE OR ROUND PINS
 - HOUSING ACCEPTS STANDARD TERMINAL NOS.:
2478 (18-24 AWG) WITH (2.79)/.110 MAX. INSULATION DIA.
2578 (22-26 AWG) WITH (1.85)/.065 MAX. INSULATION DIA.
OR TRIFURCON TERMINAL NOS.:
6438 (18-22 AWG) WITH (2.79)/.110 MAX. INSULATION DIA.
6638 (18-24 AWG) WITH (2.79)/.110 MAX. INSULATION DIA.
7258 (22-26 AWG) WITH (1.85)/.065 MAX. INSULATION DIA.
 - BOW (.006 MM/MM) / .006 IN./IN.
 - (0.13)/.005 MAX, FLASH ALLOWED ALONG DIMENSION B AND N LOCKING WINDOW.
 - THIS PART CONFORMS TO CLASS B REQUIREMENTS OF COSMETIC SPECIFICATION PS-45499-002.

41695 - * - * N - ## - * *

MATERIAL CODE
N-MOLDED NATURAL
B-BLACK
G-GLOW WIRE

PEG LOCATION
A=CKT NO. 1
B=CKT NO 2 ETC

VOID CODE
BLANK=NO VOIDS
NO.=NO. CORRESPONDS TO CKT. NO. VOIDED
MULT. VOIDS=START WITH 51

NO. OF CKTS.

OPTION CODE

CODE	RAMP	POLARIZE	PACKAGING	RIB	PEG
A	NO	NO	BULK PER PK-41695-001	NO	NO
B	YES	NO	BULK PER PK-41695-002	NO	NO
D	YES	YES	BULK PER PK-41695-003	NO	NO
E	YES	NO	BULK PER PK-41695-002	YES	NO
F	NO	NO	TBD	NO	YES
G	END RAMP ONLY	YES	BULK PER PK-41695-003	NO	NO

4	G
3	E2
2	G
1	01
SHT/REV	

UPDATE NOTE 1 IEC NO: UCP2007-2949 2007/05/24 DRAWN BY: SKOWRONSKI CHECKED BY: PATEL APPROVED BY: LENZ APPR:ESH/TH 2007/05/22 2007/05/23	QUALITY SYMBOLS	GENERAL TOLERANCES (UNLESS SPECIFIED)	DIMENSION STYLE	SCALE	DESIGN UNITS	THIRD ANGLE PROJECTION	TITLE	DATE
	$\nabla=0$ $\nabla=0$	mm INCH 4 PLACES ± --- ± --- 3 PLACES ± --- ± .010 2 PLACES ± 0.25 ± .014 1 PLACE ± 0.36 ± --- ANGULAR ±1/2°	MM/IN	---	INCH	INCH	(3.96)/.156 CENTERLINE CONNECTOR HOUSING FOR KK CRIMP TERMINALS MOLEX INCORPORATED	04/05/86
								04/05/86
								04/05/86
	DRAFT WHERE APPLICABLE MUST REMAIN WITHIN DIMENSIONS	SEE CHART					SD-41695	

THIS DRAWING CONTAINS INFORMATION THAT IS PROPRIETARY TO MOLEX INCORPORATED AND SHOULD NOT BE USED WITHOUT WRITTEN PERMISSION

M

L

K

J

I

H

G

F

E

D

C

B

A

M

L

K

J

I

H

G

F

E

D

C

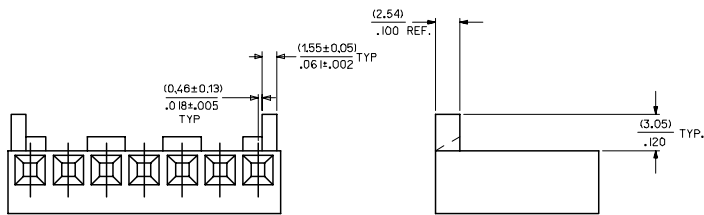
B

A

41695-N-AN**			41695-N-BN**			41695-G-BN**		
PART NO.	ENG. NO.	VOIDS	PART NO.	ENG. NO.	VOIDS	PART NO.	ENG. NO.	VOIDS
	NOT AVAILABLE			NOT AVAILABLE				
09-50-8020	41695-N-A2		09-50-8021	41695-N-B2				
09-50-8030	41695-N-A3		09-50-8031	41695-N-B3				
09-50-8040	41695-N-A4		09-50-8041	41695-N-B4		41695-2002	41695-G-B4	
09-50-8050	41695-N-A5		09-50-8051	41695-N-B5				
09-50-8060	41695-N-A6		09-50-8061	41695-N-B6				
09-50-8070	41695-N-A7		09-50-8071	41695-N-B7				
09-50-8080	41695-N-A8		09-50-8081	41695-N-B8				
09-50-8090	41695-N-A9		09-50-8091	41695-N-B9				
09-50-8100	41695-N-A10		09-50-8101	41695-N-B10				
09-50-8110	41695-N-A11		09-50-8111	41695-N-B11				
09-50-8120	41695-N-A12		09-50-8121	41695-N-B12				
09-50-8130	41695-N-A13		09-50-8131	41695-N-B13				
09-50-8140	41695-N-A14		09-50-8141	41695-N-B14				
09-50-8150	41695-N-A15		09-50-8151	41695-N-B15				
09-50-8160	41695-N-A16		09-50-8161	41695-N-B16				
09-50-8170	41695-N-A17		09-50-8171	41695-N-B17				
09-50-8180	41695-N-A18		09-50-8181	41695-N-B18				
09-50-8190	41695-N-A19		09-50-8191	41695-N-B19				
09-50-8200	41695-N-A20		09-50-8201	41695-N-B20				
09-50-9085	41695-N-A8-2	2	09-50-9030	41695-N-B3-2	2			
41695-0001	41695-N-A6-3	3		41695-N-B5-2	2			
				41695-N-B9-2	2			
				41695-N-B11-2	2			
				09-50-9121	41695-N-B12-2	2		
					41695-N-B14-2	2		
				09-50-9150	41695-N-B15-14	14		
				09-50-9060	41695-N-B6-5	5		
				09-50-9070	41695-N-B7-6	6		
				09-50-9071	41695-N-B7-2	2		
				09-50-9040	41695-N-B4-3	3		
				09-50-9090	41695-N-B9-7	7		
					41695-N-B14-13	13		
				09-50-9136	41695-N-B13-5	5		
				09-50-9137	41695-N-B13-8	8		
				09-50-9050	41695-N-B5-51	2,4		
				09-50-9061	41695-N-B6-3	3		
				09-50-9080	41695-N-B8-2	2		

OPTION CODE D

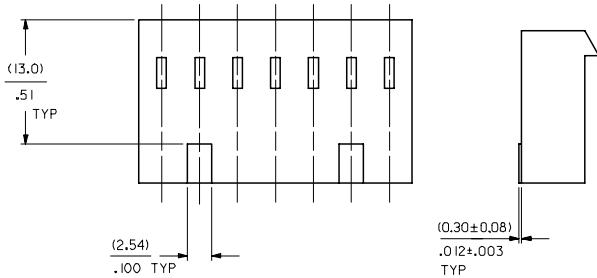
RAMP WITH POLARIZING PEGS (RIBS)



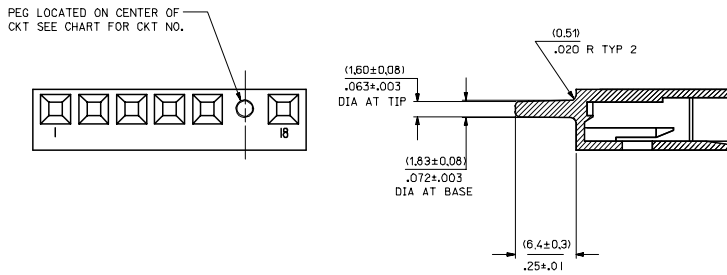
WHEN MATING WITH BREAKAWAY HEADERS THE FRICTION LOCK WALL MUST BE REMOVED

ADD 41695-2002 EC NO: UCP2007-2650 2007/04/26 G DRAWN/ADR CHK/CLS/HR/DT 2007/04/26 APPR/ESH/TH 2007/04/26 REV DESCRIPTION	QUALITY SYMBOLS	GENERAL TOLERANCES (UNLESS SPECIFIED)	DIMENSION STYLE	SCALE	DESIGN UNITS	THIRD ANGLE PROJECTION
	▽=0 ▽=0	mm INCH 4 PLACES ± --- ± --- 3 PLACES ± --- ± --- 2 PLACES ± --- ± --- 1 PLACE ± --- ± --- ANGULAR ±1/2°	MM/IN DRAWN BY DATE SAM/EC 09/22/86 CHECKED BY DATE PATEL 09/22/86 APPROVED BY DATE LENZ 09/22/86	---	INCH	THIRD ANGLE PROJECTION
	DRAFT WHERE APPLICABLE MUST REMAIN WITHIN DIMENSIONS	SEE CHART	MATERIAL NO. SD-41695	DOCUMENT NO. SD-41695	TITLE (3.96)/156 CENTERLINE CONNECTOR HOUSING FOR KK CRIMP TERMINAL MOLEX INCORPORATED	SHEET NO. 2 OF 4
	THIS DRAWING CONTAINS INFORMATION THAT IS PROPRIETARY TO MOLEX INCORPORATED AND SHOULD NOT BE USED WITHOUT WRITTEN PERMISSION					

OPTION CODE E
RAMP WITH RIBS FOR OVER MOLDING



OPTION CODE F
PEG OPTION



41695-N-DN**

PART NO.	ENG. NO.	VOIDS
	NOT AVAILABLE	
09-50-8023	41695-N-D2	
09-50-8033	41695-N-D3	
09-50-8043	41695-N-D4	
09-50-8053	41695-N-D5	
09-50-8063	41695-N-D6	
09-50-8073	41695-N-D7	
09-50-8083	41695-N-D8	
09-50-8093	41695-N-D9	
09-50-8103	41695-N-D10	
09-50-8113	41695-N-D11	
09-50-8123	41695-N-D12	
09-50-8133	41695-N-D13	
09-50-8143	41695-N-D14	
09-50-8153	41695-N-D15	
09-50-8163	41695-N-D16	
09-50-8173	41695-N-D17	
09-50-8183	41695-N-D18	
09-50-8193	41695-N-D19	
09-50-8203	41695-N-D20	
	41695-N-D15-12	12
09-50-9053	41695-N-D5-2	2
09-50-9094	41695-N-D9-3	3
09-50-9033	41695-N-D3-2	2
09-50-9043	41695-N-D4-2	2
09-50-9063	41695-N-D6-2	2
09-50-9073	41695-N-D7-2	2
09-50-9044	41695-N-D4-3	3

41695-N-EN**

PART NO.	ENG. NO.	VOIDS
	NOT AVAILABLE	
09-50-8024	41695-N-E2	
	41695-N-E3	
	41695-N-E4	
	41695-N-E5	
09-50-8064	41695-N-E6	
	41695-N-E7	
	41695-N-E8	
	41695-N-E9	
	41695-N-E10	
	41695-N-E11	
	41695-N-E12	
	41695-N-E13	
	41695-N-E14	
	41695-N-E15	
	41695-N-E16	
	41695-N-E17	
	41695-N-E18	
	41695-N-E19	
	41695-N-E20	
09-50-9032	41695-N-E3-2	2
09-50-9042	41695-N-E4-2	2
09-50-9062	41695-N-E6-2	2
09-50-9072	41695-N-E7-2	2

41695-N-FN***

PART NO.	ENG. NO.	PEG	VOIDS
	41695-N-F7-D	4	
	41695-N-F7-E	5	

UPDATE TITLE BLOCK DEC NO: UCP2006-0162 DRAWN BY: JUNE 2005/07/29 CHECKED BY: CHICKADARR 2005/07/29 APPROVED BY: TH 2005/08/01	QUALITY SYMBOLS ▽=0 ▽=0	GENERAL TOLERANCES (UNLESS SPECIFIED) mm INCH 4 PLACES ± --- ± --- 3 PLACES ± --- ± --- 2 PLACES ± --- ± --- 1 PLACE ± --- ± --- ANGULAR ±1/2°	DIMENSION STYLE MM/IN DRAWN BY: SAMIEC DATE: 09/01/87 CHECKED BY: DATE: 09/01/87 APPROVED BY: LENZ DATE: 09/01/87	SCALE: --- DESIGN UNITS: INCH THIRD ANGLE PROJECTION	TITLE: (3.96)/156 CENTERLINE CONNECTOR HOUSING FOR KK CRIMP TERMINAL MOLEX INCORPORATED	
	DRAFT WHERE APPLICABLE MUST REMAIN WITHIN DIMENSIONS	MATERIAL NO.: SEE CHART DOCUMENT NO.: SD-41695 SHEET NO.: 3 OF 4	THIS DRAWING CONTAINS INFORMATION THAT IS PROPRIETARY TO MOLEX INCORPORATED AND SHOULD NOT BE USED WITHOUT WRITTEN PERMISSION			