

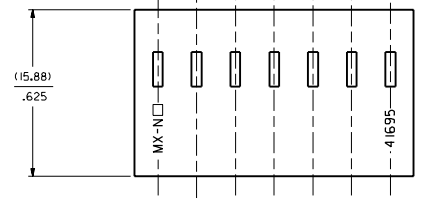
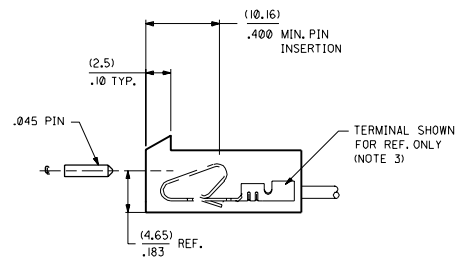
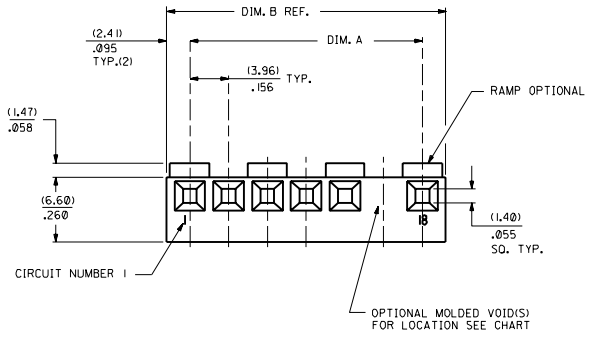
Distributed by:

JAMECO[®]
ELECTRONICS

www.Jameco.com ♦ 1-800-831-4242

The content and copyrights of the attached
material are the property of its owner.

Jameco Part Number 481351



NO. OF CKTS	DIM. A	DIM. B
1	NOT AVAILABLE	
2	(3.96+.05)	(8.79)
3	(7.92+.05)	(12.75)
4	(11.89+.05)	(16.71)
5	(15.85+.08)	(20.67)
6	(19.81+.08)	(24.64)
7	(23.77+.10)	(28.60)
8	(27.74+.10)	(32.56)
9	(31.70+.10)	(36.53)
10	(35.66+.15)	(40.49)
11	(39.62+.15)	(44.45)
12	(43.59+.15)	(48.41)
13	(47.55+.15)	(52.37)
14	(51.51+.18)	(56.34)
15	(55.47+.18)	(60.30)
16	(59.44+.20)	(64.26)
17	(63.40+.20)	(68.22)
18	(67.36+.23)	(72.19)
19	(71.32+.20)	(76.15)
20	(75.28+.23)	(80.11)
	2.964+.009	3.154

- NOTES:
- MATERIAL: GLASS FILLED POLYESTER, 94V-0, MOLDED NATURAL.
 - MATES WITH .156 CENTER HEADERS AND .045 SQ. OR RD. PIN.
 - HOUSING ACCEPTS STANDARD TERMINAL NOS.:
 - 2478 (18-24 AWG) WITH (2.79)/.110 MAX. INSULATION DIA.
 - 2578 (22-26 AWG) WITH (1.65)/.065 MAX. INSULATION DIA. OR TRIFURCON TERMINAL NOS.:
 - 6438 (18-24 AWG) WITH (2.79)/.110 MAX. INSULATION DIA.
 - 6838 (18-24 AWG) WITH (2.79)/.110 MAX. INSULATION DIA.
 - 7258 (22-26 AWG) WITH (1.65)/.065 MAX. INSULATION DIA.
 - BOW .006 IN/IN.
 - THIS PART CONFORMS TO PRODUCT SPEC. 08-50 & 40-02.
 - .005 MAX. FLASH ALLOWED ALONG DIMENSION B AND IN LOCKING WINDOW.

41695 - * - * N - ## - * *

COLOR CODE
N=MOLDED NATURAL
B=BLACK

PEG LOCATION
A=CKT NO. 1
B=CKT NO 2 ETC

OPTION CODE

CODE	RAMP	POLARIZE	PACKAGING	RIB	PEG
A	NO	NO	BULK PER PK-41695-001	NO	NO
B	YES	NO	BULK PER PK-41695-002	NO	NO
D	YES	YES	BULK PER PK-41695-003	NO	NO
E	YES	NO	BULK PER PK-41695-002	YES	NO
F	NO	NO	TBD	NO	YES
G	END RAMP ONLY	YES	BULK PER PK-41695-003	NO	NO

VOID CODE
BLANK=NO VOIDS
NO.=NO. CORRESPONDS TO CKT. NO. VOIDED
MULT. VOIDS=START WITH 51

NO. OF CKTS.

F	EI	E
	ADD PACK SPEC UCR2001-8956 4-16-01 SAMTEC	REL. NO. 19-20 UCR2000-0644 7-5-00 SAMTEC
4	E	EI
3	EI	E
2	DV	E
1	E	E

MOLEX INCORPORATED

SEE CHART SD-41695

REVISIONS ONLY ON CAD SYSTEM

REVISIONS: 4 E, 3 E I, 2 DV, 1 E

DATE: 04/05/86

SCALE: 1:1

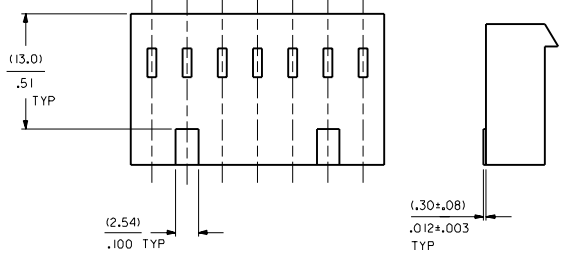
MOLEX INCORPORATED

SEE CHART SD-41695

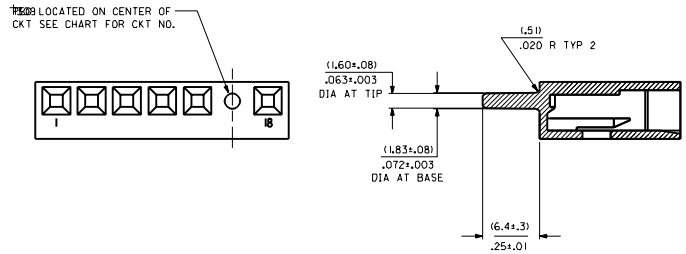
DATE: 04/05/86

SCALE: 1:1

OPTION CODE E
RAMP WITH RIBS FOR OVER MOLDING



OPTION CODE F
PEG OPTION



41695-N-DN-*				41695-N-EN-*				41695-N-FN-***			
PART NO.	ENG. NO.	VOIDS		PART NO.	ENG. NO.	VOIDS		PART NO.	ENG. NO.	PEG	VOIDS
	NOT AVAILABLE				NOT AVAILABLE						
09-50-8023	41695-N-D2			09-50-8024	41695-N-E2				41695-N-FF-D	4	
09-50-8033	41695-N-D3				41695-N-E3				41695-N-FF-E	5	
09-50-8043	41695-N-D4				41695-N-E4						
09-50-8053	41695-N-D5				41695-N-E5						
09-50-8063	41695-N-D6			09-50-8064	41695-N-E6						
09-50-8073	41695-N-D7				41695-N-E7						
09-50-8083	41695-N-D8				41695-N-E8						
09-50-8093	41695-N-D9				41695-N-E9						
09-50-8103	41695-N-D10				41695-N-E10						
09-50-8113	41695-N-D11				41695-N-E11						
09-50-8123	41695-N-D12				41695-N-E12						
09-50-8133	41695-N-D13				41695-N-E13						
09-50-8143	41695-N-D14				41695-N-E14						
09-50-8153	41695-N-D15				41695-N-E15						
09-50-8163	41695-N-D16				41695-N-E16						
09-50-8173	41695-N-D17				41695-N-E17						
09-50-8183	41695-N-D18				41695-N-E18						
09-50-8193	41695-N-D19				41695-N-E19						
09-50-8203	41695-N-D20				41695-N-E20						
	41695-N-D15-12	12		09-50-9032	41695-N-E3-2	2					
09-50-9053	41695-N-D5-2	2		09-50-9042	41695-N-E4-2	2					
09-50-9094	41695-N-D9-3	3		09-50-9062	41695-N-E6-2	2					
09-50-9033	41695-N-D3-2	2		09-50-9072	41695-N-E7-2	2					
09-50-9043	41695-N-D4-2	2									
09-50-9063	41695-N-D6-2	2									
09-50-9073	41695-N-D7-2	2									
09-50-9044	41695-N-D4-3	3									

SEE SHEET I C5	SEE SHEET I C4	SEE SHEET I C3	SEE SHEET I B16	SEE SHEET I B15	SEE SHEET I B13	SEE SHEET I B11	SEE SHEET I LTR.	REVISIONS	SEE SHEET I C5	SEE SHEET I C4	SEE SHEET I C3	SEE SHEET I B16	SEE SHEET I B15	SEE SHEET I B13	SEE SHEET I B11	SEE SHEET I LTR.	REVISIONS
----------------	----------------	----------------	-----------------	-----------------	-----------------	-----------------	------------------	-----------	----------------	----------------	----------------	-----------------	-----------------	-----------------	-----------------	------------------	-----------

DATE: 09/01/87

SCALE: 1

DRAWN BY: LTR.

CHECKED BY: LTR.

APPROVED BY: LTR.

MOLEX INCORPORATED

3.961 / 1566 CONNECTOR HOUSING FOR KK CRIMP TYPE TERMINALS (2139 & 6442 IN POLYESTER)

SEE CHARTS SD-41695

41695-001

REVISIONS ONLY ON CAD SYSTEM

1.0