

Distributed by:

JAMECO[®]
ELECTRONICS

www.Jameco.com ♦ 1-800-831-4242

The content and copyrights of the attached
material are the property of its owner.

Jameco Part Number 523397

FEATURES AND SPECIFICATIONS

Features and Benefits

- Sizes 2 to 15 circuits
- Available without locking ramp or hook
- Polarizing key available
- Various tail lengths available
- Available with kinked tail option or single beam for low insertion force
- See 6365 for Trifurcon™ equivalent (contact Molex)

Reference Information

Packaging: Bag

UL File No.: E29179

CSA File No.: LR19980

Mates With: Molex KK 3.96mm (.156") locking headers or

1.14mm (.045") stacked pins

Designed In: Inches

Electrical

Voltage: 250V

Current: 5.0A max.*

Contact Resistance: 6mΩ max.

Dielectric Withstanding Voltage: 1500V AC

Insulation Resistance: 50K MΩ min.

Physical

Housing: Nylon, UL 94V-2

(see 41815 for polyester, UL 94V-0)

Contact: Brass or Phosphor Bronze

Plating: See Table

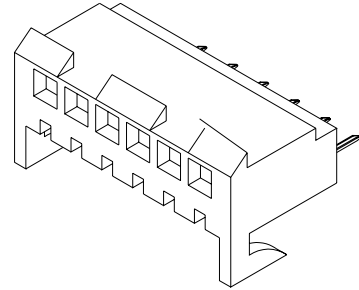
Operating Temperature: 0 to +75°C

molex® **3.96mm (.156") Pitch**
KK®

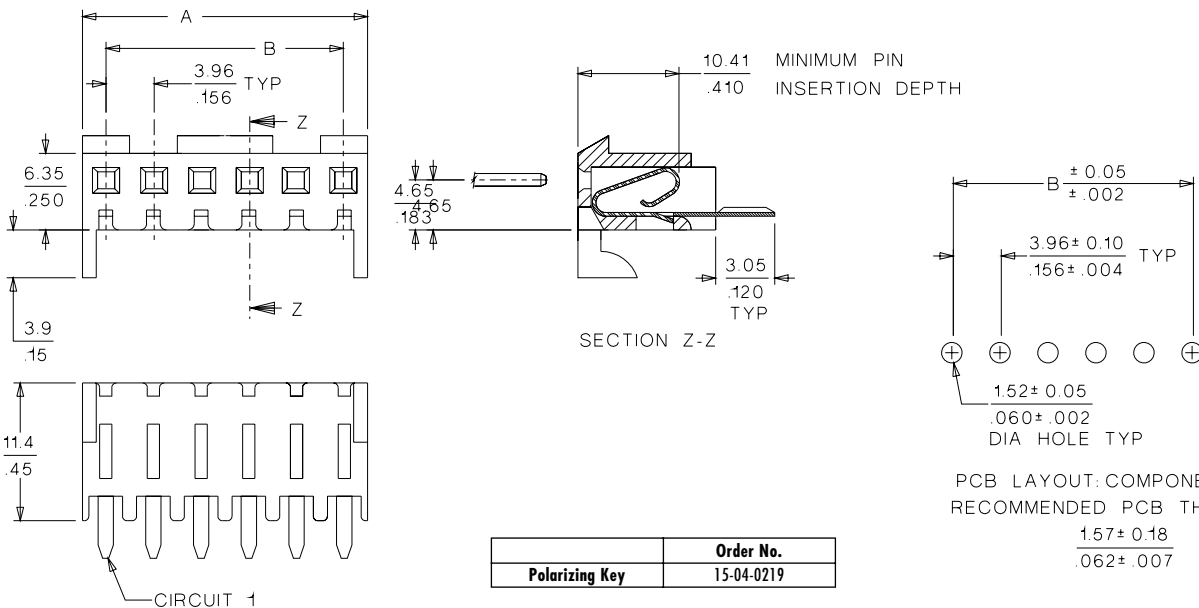
PC Board Connector

2145/3215

Top Entry



CATALOG DRAWING (FOR REFERENCE ONLY)



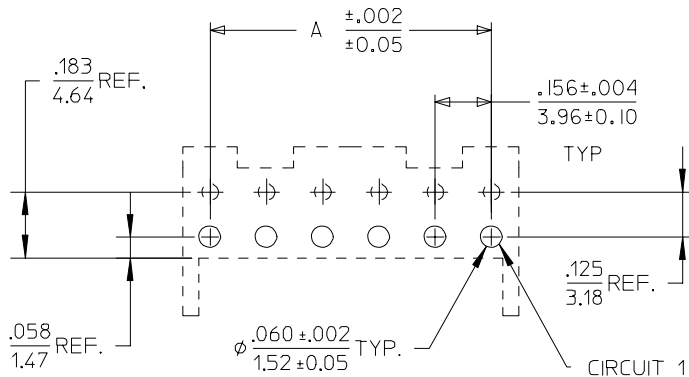
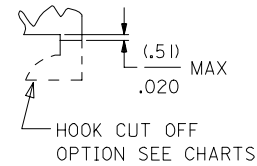
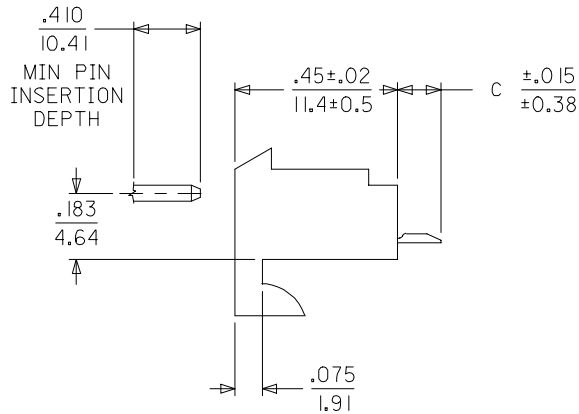
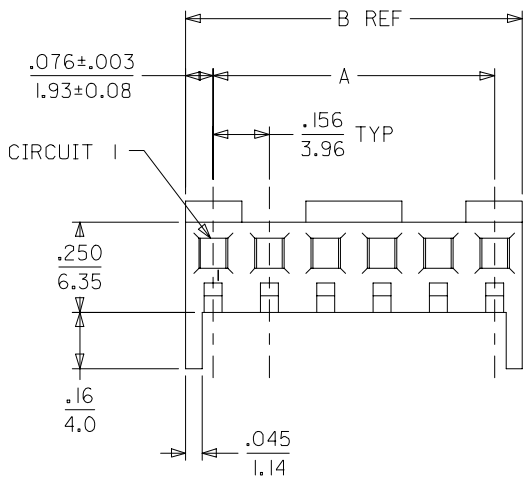
ORDERING INFORMATION AND DIMENSIONS

Circuits	Order No.				Dimension		Center Hook(s) Location
	2145		3215 [†]		A	B	
	Tin	Select Gold	Tin	Select Gold			
2	• 09-62-6025	• 09-62-3023			7.82 (.308)	3.96 (.156)	
3	• 09-62-6035	• 09-62-3033	26-11-2033	26-30-1033	11.79 (.464)	7.92 (.312)	
4	• 09-62-6045	• 09-62-3043	26-11-2043	26-30-1043	15.75 (.620)	11.89 (.468)	
5	• 09-62-6055	• 09-62-3053	26-11-2053	26-30-1053	19.71 (.776)	15.85 (.624)	
6	• 09-62-6065	• 09-62-3063	26-11-2063	26-30-1063	23.07 (.932)	19.81 (.780)	
7	• 09-62-6075	• 09-62-3073	26-11-2073	26-30-1073	27.64 (1.088)	23.77 (.936)	
8	• 09-62-6085	• 09-62-3083	26-11-2083	26-30-1083	31.60 (1.244)	27.74 (1.092)	(1) between circuits 4-5
9	• 09-62-6095	• 09-62-3093	26-11-2093	26-30-1093	35.56 (1.400)	31.70 (1.248)	(1) between circuits 4-5
10	• 09-62-6105	• 09-62-3103	26-11-2103	26-30-1103	39.52 (1.556)	35.66 (1.404)	(1) between circuits 5-6
11	• 09-62-6115	• 09-62-3113	26-11-2113	26-30-1113	43.48 (1.712)	39.62 (1.560)	
12	• 09-62-6125	• 09-62-3123	26-11-2123	26-30-1123	47.45 (1.868)	43.59 (1.716)	(2) between circuits 4-5 and 8-9
13	• 09-62-6135	• 09-62-3133	26-11-2133	26-30-1133	51.41 (2.024)	47.55 (1.872)	
14	• 09-62-6145	• 09-62-3143	23-11-2143	26-30-1143	55.37 (2.180)	51.51 (2.028)	
15	• 09-62-6155	• 09-62-3153	26-11-2153	26-30-1153	59.33 (2.336)	55.47 (2.184)	(2) between circuits 5-6 and 10-11

* US Standard Product, available through Molex franchised distributors

* Dependent upon PC board

[†] Preferred version in Europe and the Far East



NOTES:

- HOUSING MATERIAL: NYLON, UL 94V-2
- CATALOG PLATINGS:
 (102) = OVERALL TIN: .000200/0.00508 MIN.
 OVERALL COPPER UNDERPLATE: .000100/0.00254 MIN.
 (208) = SELECT GOLD: .000015/0.00038 MIN.
 SELECT TIN: .000100/0.00254 MIN.
 OVERALL NICKEL UNDERPLATE: .000050/0.00127 MIN.
- PRODUCT SPECIFICATION: PS-08-50
- SOLDERABILITY SPECIFICATION: SMES-152
- RIGHT ANGLE OPTIONS SEE DRAWING SDA-2145-001
- BOTTOM ENTRY OPTIONS SEE DRAWING SDA-2145-003

PCB LAYOUT: COMPONENT SIDE
 RECOMMENDED PCB THICKNESS: .062/1.57

CKT	A	B
02	.156±.002 3.96±0.13	.308 7.82
03	.312±.005 7.92±0.13	.464 11.79
04	.468±.005 11.89±0.13	.620 15.75
05	.624±.005 15.85±0.13	.776 19.71
06	.780±.005 19.81±0.13	.932 23.67
07	.936±.010 23.77±0.25	1.088 27.64
08	1.092±.010 27.74±0.25	1.244 31.60
09	1.248±.010 31.70±0.25	1.400 35.56
10	1.404±.010 35.66±0.25	1.556 39.52
11	1.560±.010 39.62±0.25	1.712 43.48
12	1.716±.010 43.59±0.25	1.868 47.45
13	1.872±.010 47.55±0.25	2.024 51.41
14	2.028±.014 51.51±0.36	2.180 55.37
15	2.184±.014 55.47±0.36	2.336 59.33

2-4	Y1
1	Y2
SHT.	REV.

QUALITY SYMBOLS	GENERAL TOLERANCES (UNLESS SPECIFIED)		DIMENSION STYLE IN/MM		SCALE	DESIGN UNITS	THIRD ANGLE PROJECTION
	mm	INCH	DRAWN BY	DATE	---	INCH	
▽=0	4 PLACES ± ---	± ---	SAMIEC	2003/01/16	TITLE KK 156 HOUSING ASSY PC TAIL TOP ENTRY	MOLEX INCORPORATED	SHEET NO. 1 OF 4
▽=0	3 PLACES ± ---	± .010	CHECKED BY	DATE			
	2 PLACES ± 0.25	± .014	SAMIEC	2003/01/16			
	1 PLACE ± 0.36	± ---	APPROVED BY	DATE			
	ANGULAR ± 1/2°		MARGULIS	2003/01/16	DOCUMENT NO. SDA-2145-002		
	DRAFT WHERE APPLICABLE MUST REMAIN WITHIN DIMENSIONS		MATERIAL NO. SEE CHART				
			SIZE	THIS DRAWING CONTAINS INFORMATION THAT IS PROPRIETARY TO MOLEX INCORPORATED AND SHOULD NOT BE USED WITHOUT WRITTEN PERMISSION			



KK 156 PCB ASSY 2-15 CKT

2145 TOP ENTRY SERIES

CATALOG PRODUCTS

OPTIONS	RAMPS	YES	RAMPS	YES
	HOOKS:	YES	HOOKS:	YES
	COLOR:	WHITE	COLOR:	WHITE
	MOLD VOID:	NONE	MOLD VOID:	NONE
	TERM MATL:	PHOS BRONZE	TERM MATL:	PHOS BRONZE
	CONTACT:	STANDARD	CONTACT:	STANDARD
	PC TAIL (C):	.120 / 3.05	PC TAIL (C):	.120 / 3.05
	PLT CODE:	102 – TIN	PLT CODE:	208 – 15 GOLD
	TERM VOID:	NONE	TERM VOID:	NONE
	PACKAGING:	TRAY PK-2145-001	PACKAGING:	TRAY PK-2145-001
Ckt	Material No	Material No		
2	09-62-6025	09-62-4029		
3	09-62-6035	09-62-4039		
4	09-62-6045	09-62-4049		
5	09-62-6055	09-62-4059		
6	09-62-6065	09-62-4069		
7	09-62-6075	09-62-4079		
8	09-62-6085	09-62-4089		
9	09-62-6095	09-62-4099		
10	09-62-6105	09-62-4109		
11	09-62-6115	09-62-4119		
12	09-62-6125	09-62-4129		
13	09-62-6135	09-62-4139		
14	09-62-6145	09-62-4149		
15	09-62-6155	09-62-4159		

REV: Y1	ADDA-2145-FANA501 UCP2005-0149 7/20/2004 SCHAFFER	TITLE: KK 156 PCB ASSY 2145 TOP ENTRY SERIES	SHEET No. - 2 -
DOCUMENT NUMBER: SDA-2145-002	CREATED / REVISED BY: SAMIEC	CHECKED BY: SAMIEC	APPROVED BY: MARGULIS



KK 156 PCB ASSY 2-15 CKT

2145 TOP ENTRY SERIES

CUSTOM PRODUCTS

OPTIONS	RAMPS	YES	RAMPS	YES	RAMPS	YES	RAMPS	YES
	HOOKS:	YES	HOOKS:	YES	HOOKS:	CUT OFF	HOOKS:	YES
	COLOR:	WHITE	COLOR:	WHITE	COLOR:	WHITE	COLOR:	WHITE
	MOLD VOID:	NONE	MOLD VOID:	NONE	MOLD VOID:	NONE	MOLD VOID:	NONE
	TERM MATL:	BRASS	TERM MATL:	BRASS	TERM MATL:	BRASS	TERM MATL:	BRASS
	CONTACT:	STANDARD	CONTACT:	STANDARD	CONTACT:	STANDARD	CONTACT:	STANDARD
	PC TAIL (C):	.120 / 3.05	PC TAIL (C):	.189 / 4.80	PC TAIL (C):	.120 / 3.05	PC TAIL (C):	.120 / 3.05
	PLT CODE:	102 – TIN	PLT CODE:	P909 – TIN	PLT CODE:	P909 – TIN	PLT CODE:	P909 – TIN
	TERM VOID:	NONE	TERM VOID:	NONE	TERM VOID:	NONE	TERM VOID:	NONE
	PACKAGING:	TRAY PK-2145-001	PACKAGING:	TRAY PK-2145-001	PACKAGING:	TRAY PK-2145-001	PACKAGING:	TRAY PK-2145-001
Ckt	Material No		Material No		Material No		Material No	
2	09-52-1023		09-52-1029				09-52-3023	
3	09-52-1033		09-52-1039		09-52-3034		09-52-3033	
4	09-52-1043		09-52-1049		09-52-3044		09-52-3043	
5	09-52-1053		09-52-1059		09-52-3054		09-52-3053	
6	09-52-1063		09-52-1069		09-52-3064		09-52-3063	
7	09-52-1073		09-52-1079				09-52-3073	
8	09-52-1083		09-52-1089		09-52-3089		09-52-3083	
9	09-52-1093		09-52-1099		09-52-3094		09-52-3093	
10	09-52-1103		09-52-1109				09-52-3103	
11	09-52-1113		09-52-1119				09-52-3113	
12	09-52-1123		09-52-1129				09-52-3123	
13	09-52-1133		09-52-1139				09-52-3133	
14	09-52-1143		09-52-1149				09-52-3143	
15	09-52-1153		09-52-1159				09-52-3153	

REV:	Y1	ADDA-2145-FANA501 UCP2005-0149 7/20/2004 SCHAFFER	TITLE:	KK 156 PCB ASSY 2145 TOP ENTRY SERIES	SHEET No.	- 3 -
DOCUMENT NUMBER:		CREATED / REVISED BY:		CHECKED BY:		APPROVED BY:
SDA-2145-002		SAMIEC		SAMIEC		MARGULIS



KK 156 PCB ASSY 2-15 CKT

2145 TOP ENTRY SERIES

CUSTOM PRODUCTS

OPTIONS	RAMPS	NO	RAMPS	YES	RAMPS	YES	RAMPS	YES
	HOOKS:	CUT OFF	HOOKS:	YES	HOOKS:	YES	HOOKS:	CUT OFF
	COLOR:	WHITE	COLOR:	WHITE	COLOR:	WHITE	COLOR:	WHITE
	MOLD VOID:	NONE	MOLD VOID:	NONE	MOLD VOID:	NONE	MOLD VOID:	NONE
	TERM MATL:	BRASS	TERM MATL:	BRASS	TERM MATL:	PHOS BRONZE	TERM MATL:	BRASS
	CONTACT:	STANDARD	CONTACT:	STANDARD	CONTACT:	STANDARD	CONTACT:	STANDARD
	PC TAIL (C):	.120 / 3.05	PC TAIL (C):	.120 / 3.05	PC TAIL (C):	.120 / 3.05	PC TAIL (C):	.120 / 3.05
	PLT CODE:	P909 – TIN	PLT CODE:	208 – 15 GOLD	PLT CODE:	P909 – TIN	PLT CODE:	501-20 GOLD
	TERM VOID:	NONE	TERM VOID:	NONE	TERM VOID:	NONE	TERM VOID:	NONE
	PACKAGING:	TRAY PK-2145-001	PACKAGING:	TRAY PK-2145-001	PACKAGING:	TRAY PK-2145-001	PACKAGING:	TRAY PK-2145-001
Ckt	Material No		Material No		Material No		Material No	
2	09-52-1025		09-62-3023		09-52-2029			
3	09-52-1035		09-62-3033		09-52-2039			
4	09-52-1045		09-62-3043		09-52-2049			
5	09-52-1055		09-62-3053		09-52-2059			
6	09-52-1065		09-62-3063		09-52-2069		50-29-1694	
7	09-52-1075		09-62-3073		09-52-2079			
8	09-52-1085		09-62-3083		09-52-2089			
9	09-52-1095		09-62-3093		09-52-2099			
10	09-52-1105		09-62-3103		09-52-2109			
11	09-52-1115		09-62-3113		09-52-2119			
12	09-52-1125		09-62-3123		09-52-2129			
13	09-52-1135		09-62-3133		09-52-2139			
14	09-52-1145		09-62-3143		09-52-2149			
15	09-52-1155		09-62-3153		09-52-2159			

REV: Y1	ADDA-2145-FANA501 UCP2005-0149 7/20/2004 SCHAFFER	TITLE: KK 156 PCB ASSY 2145 TOP ENTRY SERIES	SHEET No. - 4 -
DOCUMENT NUMBER: SDA-2145-002		CREATED / REVISED BY: SAMIEC	CHECKED BY: SAMIEC
		APPROVED BY: MARGULIS	