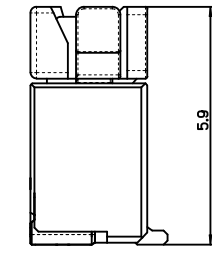
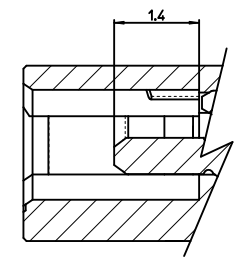
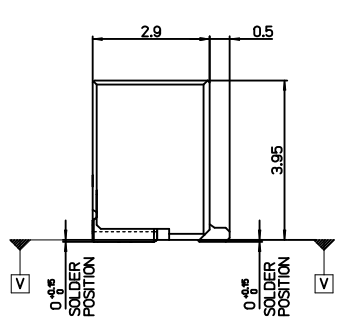
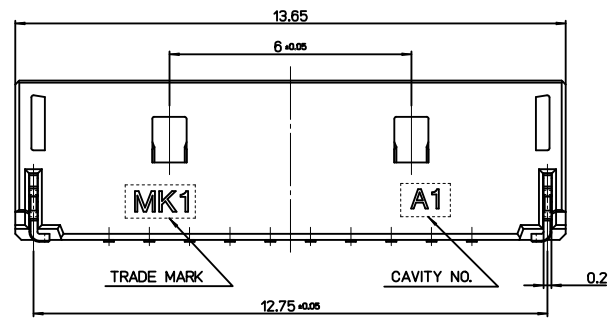


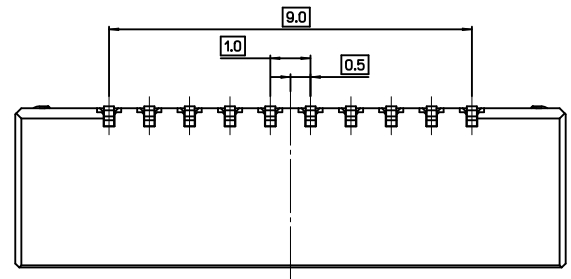
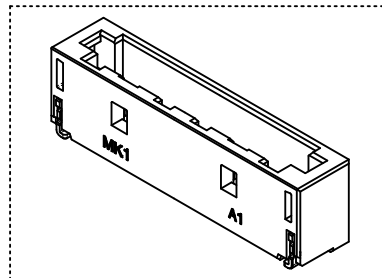
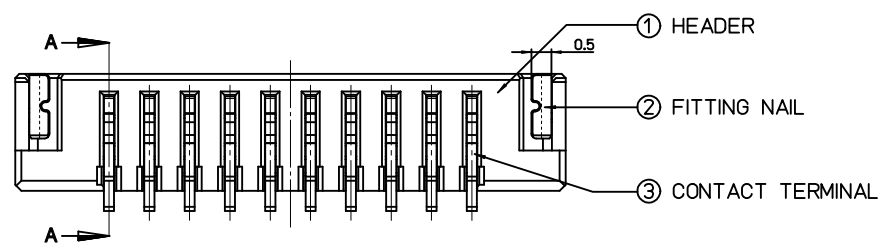
RECOMMENDED PCB LAY OUT  
[GENERAL TOLERANCE ±0.05]



MATED CONDITION(REF.)



SECTION A-A



NOTES.

1. MATED WITH : 104142-1000
2. MATERIALS.
  - HEADER : LCP E130i, GLASS FILLED, UL 94V-0 HALOGEN FREE, COLOR OF NATURAL
  - CONTACT TERMINAL : PHOSPHOR BRONZE, 0.25mm Thickness
  - FITTING NAIL : PHOSPHOR BRONZE, 0.2mm Thickness
3. FINISHES.
  - CONTACT TERMINAL : PURE-TIN PLATING ON OVERALL. THICKNESS : 3.0µm~5.0µm UNDER PLATING Ni OVERALL. THICKNESS : 1.25µm~3.75µm
  - FITTING NAIL : PURE-TIN PLATING ON OVERALL. THICKNESS : 3.0µm~5.0µm UNDER PLATING Ni OVERALL. THICKNESS : 1.25µm~3.75µm
4. COPLANALITY OF SOLDER TAIL (PEAK TEMP. : 260°C) BEFORE & AFTER REFLOW : 0.08MAX

ORDER NUMBER	104141-1010
--------------	-------------

DESIGN UNITS	METRIC	THIRD ANGLE PROJECTION
--------------	--------	------------------------

1.0MM W-T-B CONN.  
HEADER ASS'Y-10P(S/T)

**molex** MOLEX INCORPORATED

MATERIAL NO.	1041411010	DOCUMENT NO.	SD-104141-001	SHEET NO.	1 OF 01
--------------	------------	--------------	---------------	-----------	---------

GENERAL TOLERANCES (UNLESS SPECIFIED)		DIMENSION STYLE		SCALE
		MM ONLY		8:1

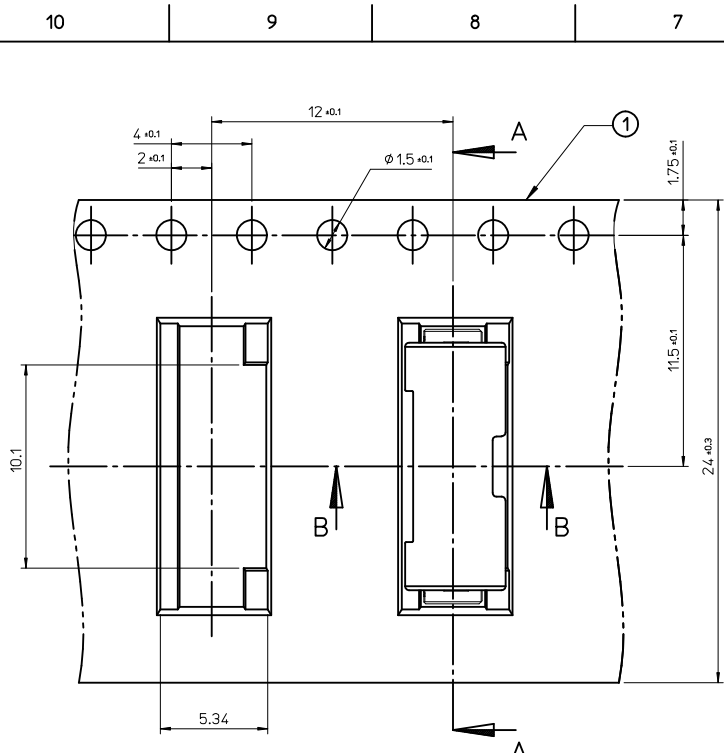
PLACES	mm	INCH
4 PLACES	± ---	± ---
3 PLACES	± ---	± ---
2 PLACES	± 0.15	± ---
1 PLACE	± 0.15	± ---

ANGULAR ± 1 °  
DRAFT WHERE APPLICABLE  
MUST REMAIN  
WITHIN DIMENSIONS

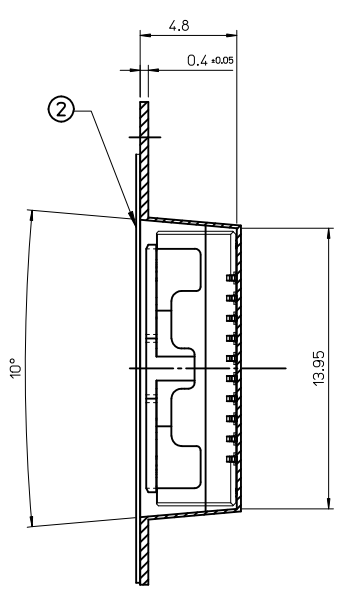
DRAWN BY	DATE	TITLE
CBCHIN	2011/12/19	
CHECKED BY	DATE	
SHCHU	2011/12/19	
APPROVED BY	DATE	
YUNSIKKIM	2011/12/22	

SIZE	A3
THIS DRAWING CONTAINS INFORMATION THAT IS PROPRIETARY TO MOLEX INCORPORATED AND SHOULD NOT BE USED WITHOUT WRITTEN PERMISSION	

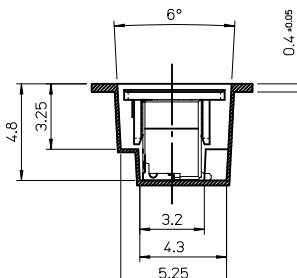
NEW RELEASED	EC NO: KOR2012-0057	2011/12/19
DRWN:CBCHIN	CHKD:SHCHU	2011/12/19
APPR:YUNSIKKIM		2011/12/22
REV	DESCRIPTION	
A		



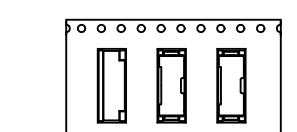
PULL OUT DIRECTION



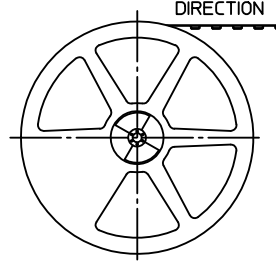
SECTION A-A



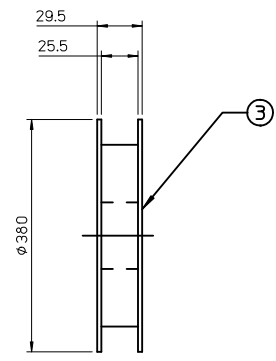
SECTION B-B



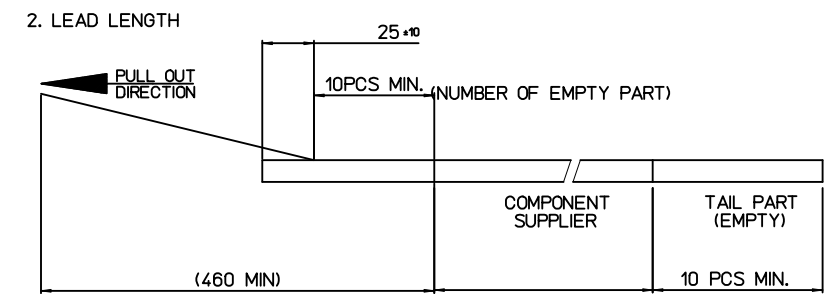
PULL OUT DIRECTION



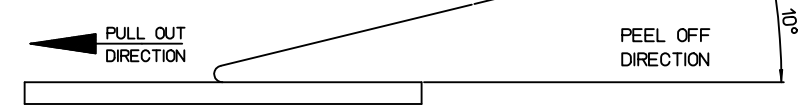
PLASTIC BOBBIN



NOTES  
1. QUANTITY OF CONNECTORS : 1500 PCS/REEL



3. PEELING OFF FORCE OF COVER TAPE : 0.1N~0.59N(10.2GF~60GF)  
(PEELING DIRECTION AS SHOW IN FOLLOW FIG.)  
PEELING OFF SPEED : 300mm/Min.(Ref.)



4. FLASH IN ANY PORTION SHOULD BE LESS THAN 0.20mm MAX.  
5. UNLESS OTHERWISE SPECIFIED INNER R0.2 MAX  
6. DRAFT ANGLE 3°MAX

3	PLASTIC BOBBIN	HI P.S	WHITE
2	COVER TAPE	PET ANTISTATIC	21.3m
1	CARRIER (EMBOSSED) TAPE	PET ANTISTATIC	
NO.	DESCRIPTION	MATERIAL	REMARK

ORDER NUMBER	104141-1010
DESIGN UNITS	METRIC
THIRD ANGLE PROJECTION	

NEW RELEASED	EC NO: KOR2012-0057
DRWN:CBCHIN	2011/12/19
CHKD:SHCHU	2011/12/19
APPR:YUNSIKKIM	2011/12/22
REV	DESCRIPTION
A	

QUALITY SYMBOLS	GENERAL TOLERANCES (UNLESS SPECIFIED)
▽=0	4 PLACES ± --- ± ---
▽=0	3 PLACES ± --- ± ---
	2 PLACES ± 0.25 ± ---
	1 PLACE ± 0.25 ± ---
	ANGULAR ± 1°
	DRAFT WHERE APPLICABLE MUST REMAIN WITHIN DIMENSIONS

DIMENSION STYLE	SCALE
MM ONLY	1:1
DRAWN BY	DATE
CBCHIN	2011/12/19
CHECKED BY	DATE
SHCHU	2011/12/19
APPROVED BY	DATE
YUNSIKKIM	2011/12/22
MATERIAL NO.	DOCUMENT NO.
1041411010	SD-104141-002

EMBOSSD PACKAGE	
1.0MM W-T-B CONN.	
HEADER ASS'Y-10P(S/T)	
MOLEX INCORPORATED	
SHEET NO.	1 OF 1
THIS DRAWING CONTAINS INFORMATION THAT IS PROPRIETARY TO MOLEX INCORPORATED AND SHOULD NOT BE USED WITHOUT WRITTEN PERMISSION	