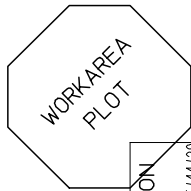


ISOMETRIC VIEW
SCALE 2:1



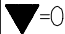
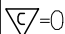
- NOTES:
1. ALL DIMENSIONS ARE FOR REFERENCE ONLY.
2. DUST CAP IS NOT SHOWN.

ENTER DESCRIPTION EC NO: MF2006-0338 DRWN:PGIBLIN CHKD: APPR:IGUMIN 2005/11/29 2005/11/29 2005/11/29	DESCRIPTION REV A	QUALITY SYMBOLS	GENERAL TOLERANCES (UNLESS SPECIFIED)		DIMENSION STYLE	SCALE	DESIGN UNITS	THIRD ANGLE PROJECTION
		▽=0 ▽=0	mm INCH 4 PLACES ± --- ± --- 3 PLACES ± --- ± --- 2 PLACES ± --- ± --- 1 PLACE ± --- ± --- ANGULAR ±1/2°	IN/MM DRAWN BY PGIBLIN DATE 2005/11/15 CHECKED BY DATE APPROVED BY DATE	4:1	INCH	TITLE SC TUNABLE CONNECTOR 45 DEGREE BOOT	
		DRAFT WHERE APPLICABLE MUST REMAIN WITHIN DIMENSIONS		MATERIAL NO.	DOCUMENT NO.	SHEET NO.		
				SEE TABLE	SD-106032-XXXX	1 OF 2		

10		9		8		7		6		5		4		3		2		106032	
CONNECTOR P/N	ϕ_D (μm)	ϕ_d (μm)	BOOT COLOR	HOUSING COLOR	CABLE ϕ (mm)	CABLE TYPE	CONNECTOR P/N	ϕ_D (μm)	ϕ_d (μm)	BOOT COLOR	HOUSING COLOR	CABLE ϕ (mm)	CABLE TYPE						
106032-4115	125 $^{+0.5}_0$	1	YELLOW	BLUE	3	SINGLE MODE	106032-3115	128 $^{+2}_0$	3	BEIGE	BEIGE	3	MULTIMODE						
106032-4125					2 AND 1.6 ZIPCORD		106032-3125					2 AND 1.6 ZIPCORD							
106032-4130					1.6		106032-3130					1.6							
106032-2115	125.5 $^{+1}_0$	1	YELLOW	BLUE	3		106032-4145	125 $^{+0.5}_0$	1	WHITE	BLUE	3	SINGLE MODE						
106032-2125					2 AND 1.6 ZIPCORD		106032-4165					2 AND 1.6 ZIPCORD							
106032-2130					1.6		106032-4175					1.6							
106032-5115	126 $^{+1}_0$	1	YELLOW	BLUE	3		106032-2145	125.5 $^{+1}_0$	1	WHITE	BLUE	3	SINGLE MODE						
106032-5125					2 AND 1.6 ZIPCORD		106032-2165					2 AND 1.6 ZIPCORD							
106032-5135					1.6		106032-2175					1.6							
106032-7115	127 $^{+1}_0$	1	YELLOW	BLUE	3		106032-5195	126 $^{+1}_0$	1	WHITE	BLUE	3	SINGLE MODE						
106032-7125					2 AND 1.6 ZIPCORD		106032-5165					2 AND 1.6 ZIPCORD							
106032-7130					1.6		106032-5175					1.6							
106032-0115	127 $^{+3}_0$	5	BEIGE	BEIGE	3		106032-7145	127 $^{+1}_0$	1	WHITE	BLUE	3	SINGLE MODE						
106032-0125					2 AND 1.6 ZIPCORD		106032-7165					2 AND 1.6 ZIPCORD							
106032-0130					1.6		106032-7175					1.6							

WORK AREA
PLOT

ENTER DESCRIPTION
 EC NO: MF2006-0338
 DRWN: PGIBLIN 2005/11/29
 CHKD: 2005/11/29
 APPR: IGUMIN 2005/11/29
 A

QUALITY SYMBOLS
 =0
 =0

GENERAL TOLERANCES (UNLESS SPECIFIED)

	mm	INCH
4 PLACES	±----	±----
3 PLACES	±----	±----
2 PLACES	±----	±----
1 PLACE	±----	±----

ANGULAR ±1/2°

DRAFT WHERE APPLICABLE
MUST REMAIN
WITHIN DIMENSIONS

DIMENSION STYLE
IN/MM

SCALE
1:1

DESIGN UNITS
INCH

THIRD ANGLE PROJECTION

DRAWN BY
PGIBLIN

DATE
2005/11/15

CHECKED BY

DATE

APPROVED BY

DATE

MATERIAL NO.
SEE TABLE

DOCUMENT NO.
SD-106032-XXXX

SHEET NO.
2 OF 2

THIS DRAWING CONTAINS INFORMATION THAT IS PROPRIETARY TO MOLEX INCORPORATED AND SHOULD NOT BE USED WITHOUT WRITTEN PERMISSION

TITLE
SC TUNABLE CONNECTOR
45 DEGREE BOOT

MOLEX MOLEX INCORPORATED