

MTP/MPO and LC Data Center Cable Solutions



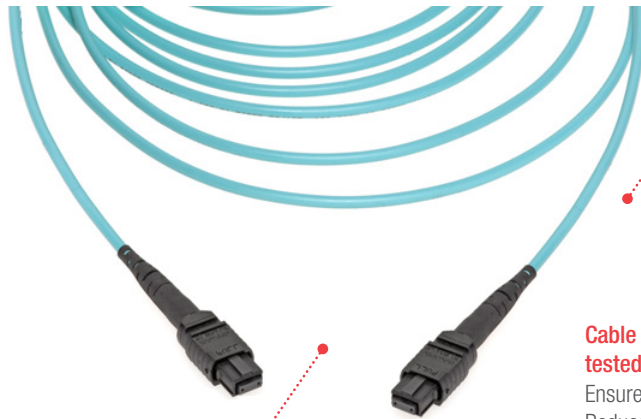
With high-density MTP/MPO and LC connectors, multiple cable configurations and integrated specialty components, Molex Data Center Cable Solutions support the integration of high-performance networks while reducing overall system cost and maintenance

Features and Benefits

MTP/MPO Cable Assemblies

Low-loss options available
Meets tight system insertion-loss budgets

Low-smoke, zero-halogen (LSZH)/Plenum/Riser rated
Fulfills flammability specifications for data center applications



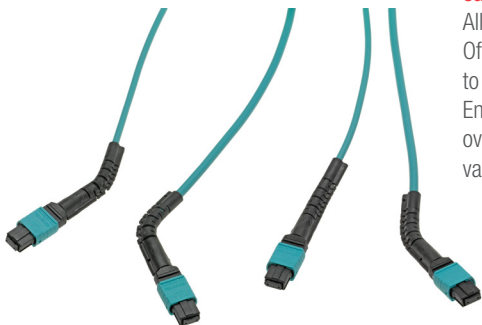
12- and 24-fiber options available
Supports high-density data center applications. Reduces the number of cable assemblies required for system installation

Cable assemblies 100% quality tested prior to shipping
Ensures high performance. Reduces customer cost and time associated with testing

Industry-standard connector housing
Simplifies implementation. Compatible with other pre-installed cables

Features and Benefits

Adapters, accessories



FlexiBend Boots available for additional fiber routing capabilities
Alleviate cable congestion. Offers bendable strain relief to secure any configuration. Ensures cable performance over multiple bends in various directions

EMI gaskets included
Provide electromagnetic interference (EMI) seal between the adapter and mounting surface

Features and Benefits

MTP/MPO Connector



Precision-molded NTT-compatible ferrule
Connects 4 to 24 fibers using ribbon cable

Push-pull connector housing
Provides quick and reliable connections

Multiple ribbons stacked inside round jacket
Provides low-profile solution for high-density applications

Shuttered die cast adapters
Shields and isolates EMI emissions



Ceramic or phosphor bronze alignment sleeves (where applicable)
Accommodate single-mode (SM) and multi-mode (MM) performance

Loopback adapters available
Enables testing and network diagnostics



Multi-port EMI adapter options
Ease space constraints on panel and increase ports within an envelope



MTP/MPO and LC Data Center Cable Solutions



Features and Advantages

LC Cable Assemblies

Low loss performance

Meets tight system insertion-loss budgets

Cable assemblies 100% quality tested prior to shipping

Ensures high performance. Reduces customer cost and time associated with testing

Tunable connector

Optimizes insertion-loss performance



FlexiBend Boots available for additional fiber routing capabilities

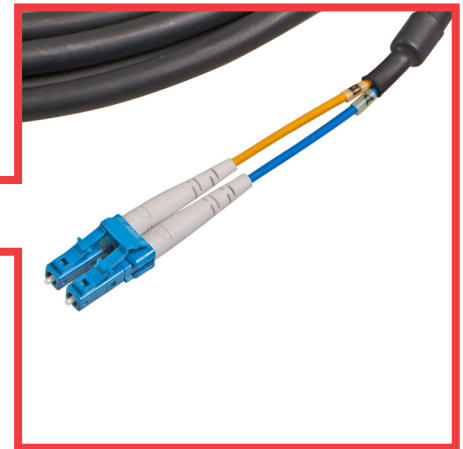
Alleviate cable congestion. Offers bendable strain relief to secure any configuration. Ensures cable performance over multiple bends in various directions

Industry-standard LC connector housing

Simplifies implementation. Compatible with other pre-installed cables

Common and proven technologies combined in the LC connector system

Delivers high performance. Easy to implement



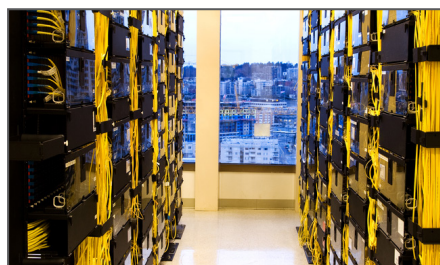
Applications

Telecommunications/Networking

- Optical electrical modules
- Optical switches and routers
- PC cards and patch panels

Data Centers

- Servers



Data Center Servers

Specifications

MTP/MPO Cable Assemblies

REFERENCE INFORMATION

Packaging: Individually bagged
 Mates With: Molex MPO Adapters/QSFP Transceivers
 Use With: Molex MPO Adapters/QSFP Transceivers
 Designed In: Meters
 RoHS: Yes
 Halogen Free: TBD

FIBER:

Multimode:
 - 50/125 μ m OM3 Bend-Insensitive
 - 50/125 μ m OM4 Bend-Insensitive
 Single Mode:
 - OS2 ITU-T G.657.A1 Bend-Insensitive

CONNECTOR:

Connector Type:
 - MPO Female, Aqua for Multi-mode
 - MPO Female, Green for Single-mode

MECHANICAL

Fiber Count: 12 and 24 Fiber Options
 Cable Diameter: 12F = 4.5/3.0mm
 24F = 5.4/3.8mm
 Tensile Load: 12F = 660 N
 24F = 660 N
 Min Bend Radius: 12F = 68mm
 24F = 89mm
 24F and Low-Loss Options: 20N MTP Spring

LC Cable Assemblies

REFERENCE INFORMATION

Packaging: Individually bagged
 Mates With: Molex LC Adapters
 Use With: Molex LC Adapters
 Designed In: Meters
 RoHS: Yes
 Halogen Free: Yes

MECHANICAL PROPERTIES:

Mating Force: 8.9N
 Durability (min.): 250 mating cycles

PHYSICAL

Connector Ferrule: Zirconia Ceramic
 Housing: Plastic and Zinc
 Alignment Sleeve: Phosphor Bronze or Zirconia Ceramic
 Operating Temperature: -40 to 85°C

Ordering Information

Series No.	Component
106005	Loopback, Singlemode and Multimode
106225	MPO Data Center Trunk Cable Assemblies
106114	Simplex EMI Adapter
<u>106181</u>	MTP Quad Adapter Assembly
106283	QSFP+ optical Jumper Cable Assembly
<u>88537</u>	LC-to-LC Data Center Cable Assemblies