

Distributed by:

JAMECO[®]
ELECTRONICS

www.Jameco.com ♦ 1-800-831-4242

The content and copyrights of the attached
material are the property of its owner.

Jameco Part Number 521050

FEATURES AND SPECIFICATIONS

Features and Benefits

- Intermateable, intermountable and interchangeable with industry-standard versions
- Cross tested to assure industry compatibility
- Positive locks
- Fully isolated contacts

Reference Information

Product Specification: PS-42022-0001
 Packaging: Tray
 UL File No.: E29179
 CSA File No.: LR19980
 Designed In: Inches

Electrical

Voltage: 600V
 Current:

Circuit	2	3	4	6	9	12	15
Amperes	13.5	13.5	13.5	11.0	11.0	11.0	11.0

Contact Resistance: 3.5mΩ max.
 Dielectric Withstanding Voltage: 2900V
 Insulation Resistance: 1000 MΩ min.

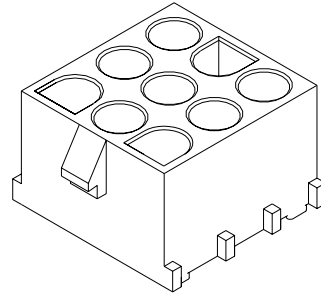
Physical

Header Housing: See Table
 Header Contact: Phosphor Bronze
 Plating: Tin
 Operating Temperature: -55 to +105°C

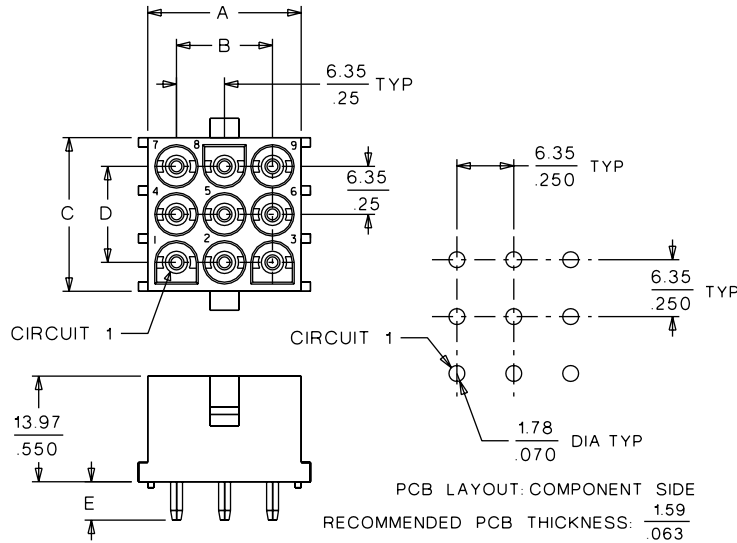


**2.13mm (.084") Diameter
 MLX
 Power Connector
 Header**

**42002
 Vertical**



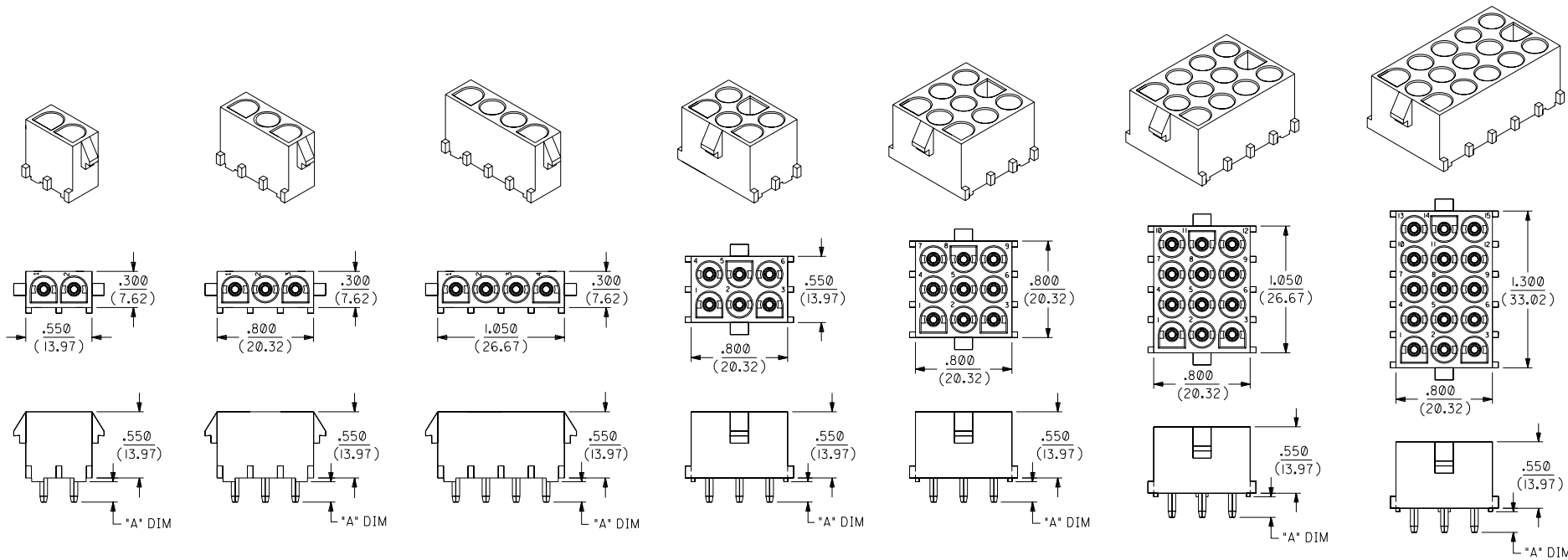
CATALOG DRAWING (FOR REFERENCE ONLY)



ORDERING INFORMATION AND DIMENSIONS

Circuits	Order No.				Housing	Dimension				
	White		Brick Red			A	B	C	D	E
	Male	Female	Male	Female						
2	• 10-84-4020	• 10-84-4022			94V-2	7.62 (.300)		13.97 (.550)	6.35 (.250)	4.30 (.170)
	10-84-5020	10-84-5021	• 10-84-4021	• 10-84-4023	94V-0					
3	• 10-84-4030	• 10-84-4032			94V-2	7.62 (.300)		20.32 (.800)	12.70 (.500)	4.30 (.170)
	10-84-5030	10-84-5031	• 10-84-4031	• 10-84-4033	94V-0					
4	• 10-84-4040	• 10-84-4042			94V-2	7.62 (.300)		26.67 (1.050)	19.05 (.750)	4.30 (.170)
	10-84-5040	10-84-5041	• 10-84-4041	• 10-84-4043	94V-0					
6	• 10-84-4060	• 10-84-4062			94V-2	20.32 (.800)	12.70 (.500)	13.97 (.550)	6.35 (.250)	4.30 (.170)
	10-84-5060	10-84-5061	• 10-84-4061	• 10-84-4063	94V-0					
9	• 10-84-4090	• 10-84-4092			94V-2	20.32 (.800)	12.70 (.500)	20.32 (.800)	12.70 (.500)	4.30 (.170)
	10-84-5090	10-84-5091	• 10-84-4091	• 10-84-4093	94V-0					
12	• 10-84-4120	• 10-84-4122			94V-2	20.32 (.800)	12.70 (.500)	26.67 (1.050)	19.05 (.750)	4.30 (.170)
	10-84-5120	10-84-5121	• 10-84-4121	• 10-84-4123	94V-0					
15	• 10-84-4150	• 10-84-4152			94V-2	20.32 (.800)	12.70 (.500)	33.02 (1.300)	25.40 (1.000)	4.30 (.170)
	10-84-5150	10-84-5151	• 10-84-4151	• 10-84-4153	94V-0					

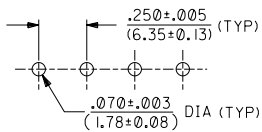
• US Standard Product, available through Molex franchised distributors



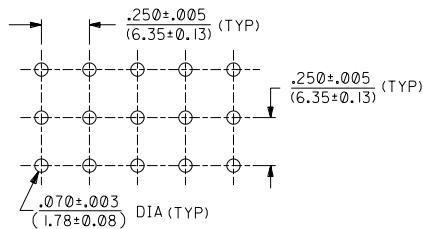
SEE CHARTS FOR "A" DIMENSION

P.C. BOARD MOUNTING DIMENSIONS

2, 3, & 4 POSITION HEADER ASSEMBLIES



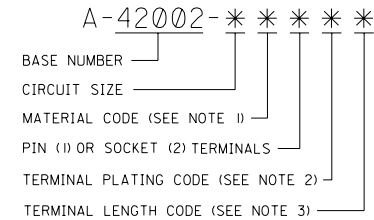
6, 9, 12 & 15 POSITION HEADER ASSEMBLIES



NOTES:

- 1) MATERIAL CODES:
 "A"= NYLON 6/6, 94V-2, NATURAL
 "B"= POLYESTER, 94V-0, BRICK RED
 "C"= PLOYESTER, 94V-0, WHITE/NATURAL
- 2) PLATING CODES:
 "A" = HOT TIN DIP 20 m.I./(.051 MICRONS) MINIMUM.
 PER SDES-88-P901
 "B" = 30 m.I./(.076 MICRONS) MINIMUM SELECT GOLD, AND
 75 m.I./(.191 MICRONS) MINIMUM SELECT TIN - LEAD OVER
 50 m.I./(.127 MICRONS) MINIMUM NICKEL OVERALL.
- 3) TERMINAL LENGTH CODES:
 1= TERMINAL FOR .062/(1.57) THICK PC BOARD
 2= TERMINAL FOR .125/(3.18) THICK PC BOARD
- 4) DIMENSIONS ARE FOR REFERENCE ONLY UNLESS INDICATED OTHERWISE.
- 5) HEADER ASSEMBLY HOUSINGS MATE WITH :
 - PLUG HOUSINGS, .084/(2.13) DIA. SERIES: (42021-***)
- 6) CONTACTS ARE ON .250/(6.35) GRID CENTERLINE SPACING.

LEGEND:



5	B1			
4	B1	C1		REVISED AS PER 1.2003-0106 03/06/25
3	B1			
2	B1	C		ADD BLK TOL LICR1998-0296 98-6-B KSS
1	C1			
MFG.	SH.	REV.	LTR.	REVISIONS

DIMENSIONS SHOWN (METRIC) INCH UNLESS OTHERWISE SPECIFIED TOLERANCES: ANGULAR ± 1/2°		▽ = 0		= 0		REVISE ONLY ON CAD SYSTEM	
3 PLACE ± .010		---		---		TITLE	
2 PLACE ± .014		± 0.25		---		HEADER HOUSING ASSEMBLIES, .084/(2.13) DIA. SERIES	
1 PLACE ---		± 0.36		---		SHEET NO. DATE 1 OF 5 11/16/87	
DRAFT WHERE APPLICABLE MUST REMAIN WITHIN DIMENSIONS		MOLEX INCORPORATED LITSE, ILL. 60532		SHEET NO. DATE 1 OF 5 11/16/87		U.S.A.	
DRWG. NO. PART NO. DRWG. NO.		SEE CHART		SDA-42002-*****		DIV. SIZE CP C	
DRWG. BY: RK		CHK'D. BY: GWF		FILE NAME: SDA42002X1.DGN		THIS DRAWING CONTAINS INFORMATION THAT IS PROPRIETARY TO MOLEX INC. AND SHOULD NOT BE USED WITHOUT WRITTEN PERMISSION	
APP'D. BY: GWF		SCALE: 1.5:1					

	13	12	11	10	9	8	7	6	42002	4	3	2	1		
J	PART NO.	ENG. NO.	CIRCUIT SIZE	HOUSING MATERIAL (SEE NOTE 1)	PIN (1) OR SOCKET (2) TERMINALS	TERMINAL PLATING (SEE NOTE 2)	TERMINAL LENGTH (SEE NOTE 3)	*A" DIM ±.015							J
	10-84-4020	A-42002-2A IA I	2	A	1	A	1	.17/(4,3)							
	10-84-4021	A-42002-2B IA I		B	1	A	1								
	10-84-5020	A-42002-2C IA I		C	1	A	1								
	10-84-4022	A-42002-2A2A I		A	2	A	1								
	10-84-4023	A-42002-2B2A I		B	2	A	1								
	10-84-5021	A-42002-2C2A I		C	2	A	1								
I	PRELIMINARY	A-42002-2A IA2	A	1	A	2	.23/(5,8)							I	
	PRELIMINARY	A-42002-2B IA2	B	1	A	2									
	PRELIMINARY	A-42002-2C IA2	C	1	A	2									
	PRELIMINARY	A-42002-2A2A2	A	2	A	2									
	PRELIMINARY	A-42002-2B2A2	B	2	A	2									
	PRELIMINARY	A-42002-2C2A2	C	2	A	2									
H	10-84-4030	A-42002-3A IA I	3	A	1	A	1	.17/(4,3)							H
	10-84-4031	A-42002-3B IA I		B	1	A	1								
	10-84-5030	A-42002-3C IA I		C	1	A	1								
	10-84-4032	A-42002-3A2A I		A	2	A	1								
	10-84-4033	A-42002-3B2A I		B	2	A	1								
	10-84-5031	A-42002-3C2A I		C	2	A	1								
G	PRELIMINARY	A-42002-3A IA2	A	1	A	2	.23/(5,8)							G	
	PRELIMINARY	A-42002-3B IA2	B	1	A	2									
	PRELIMINARY	A-42002-3C IA2	C	1	A	2									
	PRELIMINARY	A-42002-3A2A2	A	2	A	2									
	PRELIMINARY	A-42002-3B2A2	B	2	A	2									
	PRELIMINARY	A-42002-3C2A2	C	2	A	2									
F	10-84-4040	A-42002-4A IA I	4	A	1	A	1	.17/(4,3)							F
	10-84-4041	A-42002-4B IA I		B	1	A	1								
	10-84-5040	A-42002-4C IA I		C	1	A	1								
	10-84-4042	A-42002-4A2A I		A	2	A	1								
	10-84-4043	A-42002-4B2A I		B	2	A	1								
	10-84-5041	A-42002-4C2A I		C	2	A	1								
E	PRELIMINARY	A-42002-4A IA2	A	1	A	2	.23/(5,8)							E	
	PRELIMINARY	A-42002-4B IA2	B	1	A	2									
	PRELIMINARY	A-42002-4C IA2	C	1	A	2									
	PRELIMINARY	A-42002-4A2A2	A	2	A	2									
	PRELIMINARY	A-42002-4B2A2	B	2	A	2									
	PRELIMINARY	A-42002-4C2A2	C	2	A	2									
D	10-84-4060	A-42002-6A IA I	6	A	1	A	1	.17/(4,3)							D
	10-84-4061	A-42002-6B IA I		B	1	A	1								
	10-84-5060	A-42002-6C IA I		C	1	A	1								
	10-84-4062	A-42002-6A2A I		A	2	A	1								
	10-84-4063	A-42002-6B2A I		B	2	A	1								
	10-84-5061	A-42002-6C2A I		C	2	A	1								
C	PRELIMINARY	A-42002-6A IA2	A	1	A	2	.23/(5,8)							C	
	PRELIMINARY	A-42002-6B IA2	B	1	A	2									
	PRELIMINARY	A-42002-6C IA2	C	1	A	2									
	PRELIMINARY	A-42002-6A2A2	A	2	A	2									
	PRELIMINARY	A-42002-6B2A2	B	2	A	2									
	PRELIMINARY	A-42002-6C2A2	C	2	A	2									
B	10-84-4090	A-42002-9A IA I	9	A	1	A	1	.17/(4,3)							B
	10-84-4091	A-42002-9B IA I		B	1	A	1								
	10-84-5090	A-42002-9C IA I		C	1	A	1								
	10-84-4092	A-42002-9A2A I		A	2	A	1								
	10-84-4093	A-42002-9B2A I		B	2	A	1								
	10-84-5091	A-42002-9C2A I		C	2	A	1								
A	PRELIMINARY	A-42002-9A IA2	A	1	A	2	.23/(5,8)							A	
	PRELIMINARY	A-42002-9B IA2	B	1	A	2									
	PRELIMINARY	A-42002-9C IA2	C	1	A	2									
	PRELIMINARY	A-42002-9A2A2	A	2	A	2									
	PRELIMINARY	A-42002-9B2A2	B	2	A	2									
	PRELIMINARY	A-42002-9C2A2	C	2	A	2									

LEGEND:

A-42002-* * * * *

BASE NUMBER →

CIRCUIT SIZE →

MATERIAL CODE (SEE NOTE 1) →

PIN (1) OR SOCKET (2) TERMINALS →

TERMINAL PLATING CODE (SEE NOTE 2) →

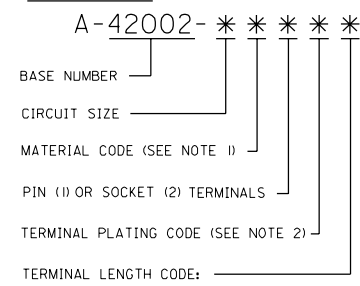
TERMINAL LENGTH CODE (SEE NOTE 3) →

B1	SEE SHEET 1
A	SEE SHEET 1
I	SEE SHEET 1

DIMENSIONS SHOWN (METRIC) INCH UNLESS OTHERWISE SPECIFIED TOLERANCES ANGULAR ± 1/2°		▽ = 0 ▼ = 0		MFG. SH. REV. LTR. REVISIONS	
TITLE HEADER HOUSING ASSEMBLIES, .084/(2,13) DIA. SERIES				REVISE ONLY ON CAD SYSTEM	
MOLEX INCORPORATED LITTLE ROCK, AR 72603		SHEET NO. 2		DATE 11/16/87	
PART NO. SDA-42002-*****		DRAWING NO.		CP C	
SEE CHART		FILE NAME SDA42002X2.DGN		THIS DRAWING CONTAINS INFORMATION THAT IS PROPRIETARY TO MOLEX INC. AND SHOULD NOT BE USED WITHOUT WRITTEN PERMISSION.	
DRWG. BY: RK	CHK'D. BY: GWF	SCALE: --:--			
APP'D. BY: GWF					

	13	12	11	10	9	8	7	6	42002	4	3	2	1				
J	PART NO.	ENG. NO.	CIRCUIT SIZE	HOUSING MATERIAL (SEE NOTE 1)	PIN (1) OR SOCKET (2) TERMINALS	TERMINAL PLATING (SEE NOTE 2)	TERMINAL LENGTH (SEE NOTE 3)	*A" DIM ±.015								J	
J	IO-84-4024	A-42002-2A IB1	2	A	1	B	1	.17/(4.3)								J	
	IO-84-4025	A-42002-2B IB1		B	1	B	1										I
	IO-84-5022	A-42002-2C IB1		C	1	B	1										
I	IO-84-4026	A-42002-2A2B1		A	2	B	1									G	
	IO-84-4027	A-42002-2B2B1		B	2	B	1										F
	IO-84-5023	A-42002-2C2B1		C	2	B	1										
H	PRELIMINARY	A-42002-2A IB2		A	1	B	2	.23/(5.8)								D	
	PRELIMINARY	A-42002-2B IB2		B	1	B	2										C
	PRELIMINARY	A-42002-2C IB2		C	1	B	2										
G	PRELIMINARY	A-42002-2A2B2	A	2	B	2									A		
	PRELIMINARY	A-42002-2B2B2	B	2	B	2											
	PRELIMINARY	A-42002-2C2B2	C	2	B	2											
F	IO-84-4034	A-42002-3A IB1	3	A	1	B	1	.17/(4.3)									
	IO-84-4035	A-42002-3B IB1		B	1	B	1										
	IO-84-5032	A-42002-3C IB1		C	1	B	1										
E	IO-84-4036	A-42002-3A2B1		A	2	B	1										
	IO-84-4037	A-42002-3B2B1		B	2	B	1										
	IO-84-5033	A-42002-3C2B1		C	2	B	1										
D	PRELIMINARY	A-42002-3A IB2		A	1	B	2	.23/(5.8)									
	PRELIMINARY	A-42002-3B IB2		B	1	B	2										
	PRELIMINARY	A-42002-3C IB2		C	1	B	2										
C	PRELIMINARY	A-42002-3A2B2	A	2	B	2											
	PRELIMINARY	A-42002-3B2B2	B	2	B	2											
	PRELIMINARY	A-42002-3C2B2	C	2	B	2											
B	IO-84-4044	A-42002-4A IB1	4	A	1	B	1	.17/(4.3)									
	IO-84-4045	A-42002-4B IB1		B	1	B	1										
	IO-84-5042	A-42002-4C IB1		C	1	B	1										
A	IO-84-4046	A-42002-4A2B1		A	2	B	1										
	IO-84-4047	A-42002-4B2B1		B	2	B	1										
	IO-84-5043	A-42002-4C2B1		C	2	B	1										
J	PRELIMINARY	A-42002-4A IB2		A	1	B	2	.23/(5.8)									
	PRELIMINARY	A-42002-4B IB2		B	1	B	2										
	PRELIMINARY	A-42002-4C IB2		C	1	B	2										
I	PRELIMINARY	A-42002-4A2B2	A	2	B	2											
	PRELIMINARY	A-42002-4B2B2	B	2	B	2											
	PRELIMINARY	A-42002-4C2B2	C	2	B	2											
H	IO-84-4064	A-42002-6A IB1	6	A	1	B	1	.17/(4.3)									
	IO-84-4065	A-42002-6B IB1		B	1	B	1										
	IO-84-5062	A-42002-6C IB1		C	1	B	1										
G	IO-84-4066	A-42002-6A2B1		A	2	B	1										
	IO-84-4067	A-42002-6B2B1		B	2	B	1										
	IO-84-5063	A-42002-6C2B1		C	2	B	1										
F	PRELIMINARY	A-42002-6A IB2		A	1	B	2	.23/(5.8)									
	PRELIMINARY	A-42002-6B IB2		B	1	B	2										
	PRELIMINARY	A-42002-6C IB2		C	1	B	2										
E	PRELIMINARY	A-42002-6A2B2	A	2	B	2											
	PRELIMINARY	A-42002-6B2B2	B	2	B	2											
	PRELIMINARY	A-42002-6C2B2	C	2	B	2											
D	IO-84-4094	A-42002-9A IB1	9	A	1	B	1	.17/(4.3)									
	IO-84-4095	A-42002-9B IB1		B	1	B	1										
	IO-84-5092	A-42002-9C IB1		C	1	B	1										
C	IO-84-4096	A-42002-9A2B1		A	2	B	1										
	IO-84-4097	A-42002-9B2B1		B	2	B	1										
	IO-84-5093	A-42002-9C2B1		C	2	B	1										
B	PRELIMINARY	A-42002-9A IB2		A	1	B	2	.23/(5.8)									
	PRELIMINARY	A-42002-9B IB2		B	1	B	2										
	PRELIMINARY	A-42002-9C IB2		C	1	B	2										
A	PRELIMINARY	A-42002-9A2B2	A	2	B	2											
	PRELIMINARY	A-42002-9B2B2	B	2	B	2											
	PRELIMINARY	A-42002-9C2B2	C	2	B	2											

LEGEND:



42002

B1 SEE SHEET 1

DIMENSIONS SHOWN (METRIC) INCH		▽ = 0		▽ = 0		REVISE ONLY ON CAD SYSTEM	
UNLESS OTHERWISE SPECIFIED TOLERANCES ANGLES ARE 1/2°		TITLE		ASSEMBLY, PIN AND SOCKET HEADERS .084/(2.13) DIA. SERIES		DATE 96/03/29	
3 PLACE ± ---		INCH		METRIC		MOLEX INCORPORATED SHEET NO. 4 U.S.A.	
2 PLACE ± ---		FILE NAME		SDA-42002-*****		DRAWING NO.	
1 PLACE --- ± ---		SCALE		1:1		CP C	
DRAFT WHERE APPLICABLE MUST REMAIN WITHIN DIMENSIONS		DRWG. BY		CM		CHK'D. BY	
APP'D. BY		RAS		SCALE		---	

	13	12	11	10	9	8	7	6	42002	4	3	2	1		
J	PART NO.	ENG. NO.	CIRCUIT SIZE	HOUSING MATERIAL (SEE NOTE 1)	PIN (1) OR SOCKET (2) TERMINALS	TERMINAL PLATING (SEE NOTE 2)	TERMINAL LENGTH (SEE NOTE 3)	"A" DIM ±.015							J
	10-84-4124	A-42002-12A1B1	12	A	1	B	1	.17/(4,3)							
	10-84-4125	A-42002-12B1B1		B	1	B	1								
	10-84-5122	A-42002-12C1B1		C	1	B	1								
	10-84-4126	A-42002-12A2B1		A	2	B	1								
	10-84-4127	A-42002-12B2B1		B	2	B	1								
	10-84-5123	A-42002-12C2B1		C	2	B	1								
I	PRELIMINARY	A-42002-12A1B2	A	1	B	2	.23/(5,8)							I	
	PRELIMINARY	A-42002-12B1B2	B	1	B	2									
	PRELIMINARY	A-42002-12C1B2	C	1	B	2									
	PRELIMINARY	A-42002-12A2B2	A	2	B	2									
	PRELIMINARY	A-42002-12B2B2	B	2	B	2									
	PRELIMINARY	A-42002-12C2B2	C	2	B	2									
H	10-84-4154	A-42002-15A1B1	15	A	1	B	1	.17/(4,3)							H
	10-84-4155	A-42002-15B1B1		B	1	B	1								
	10-84-5152	A-42002-15C1B1		C	1	B	1								
	10-84-4156	A-42002-15A2B1		A	2	B	1								
	10-84-4157	A-42002-15B2B1		B	2	B	1								
	10-84-5153	A-42002-15C2B1		C	2	B	1								
G	PRELIMINARY	A-42002-15A1B2	A	1	B	2	.23/(5,8)							G	
	PRELIMINARY	A-42002-15B1B2	B	1	B	2									
	PRELIMINARY	A-42002-15C1B2	C	1	B	2									
	PRELIMINARY	A-42002-15A2B2	A	2	B	2									
	PRELIMINARY	A-42002-15B2B2	B	2	B	2									
	PRELIMINARY	A-42002-15C2B2	C	2	B	2									
F														F	
E														E	
D														D	
C														C	
B														B	
A														A	

LEGEND:

A-42002-*****

- BASE NUMBER
- CIRCUIT SIZE
- MATERIAL CODE (SEE NOTE 1)
- PIN (1) OR SOCKET (2) TERMINALS
- TERMINAL PLATING CODE (SEE NOTE 2)
- TERMINAL LENGTH CODE (SEE NOTE 3)

42002

B1 SEE SHEET 1

DIMENSIONS SHOWN (METRIC) INCH		▽ = 0 = 0		REVISE ONLY ON CAD SYSTEM	
UNLESS OTHERWISE SPECIFIED TOLERANCES ANGLES ARE ± 1/2°		TITLE		ASSEMBLY, PIN AND SOCKET HEADERS .084/(2.13) DIA. SERIES	
3 PLACE ± ---	---	MOLEX INCORPORATED		SHEET NO.	5
2 PLACE ± ---	---	LITTLE, ILL. 60532		DATE	96/03/29
1 PLACE ---	---	DRAWING CONTAINS INFORMATION THAT IS PROPRIETARY TO MOLEX INC. AND SHOULD NOT BE USED WITHOUT WRITTEN PERMISSION		FILE NAME	SD42002XB DGN
DRAFT WHERE APPLICABLE MUST REMAIN WITHIN DIMENSIONS		PART NO.		SDA-42002-*****	
DRG. BY: CM	CHK'D. BY: KBP	SEE CHART		DRAW. NO.	
APP'D. BY: RAS	SCALE: --:--	THIS DRAWING CONTAINS INFORMATION THAT IS PROPRIETARY TO MOLEX INC. AND SHOULD NOT BE USED WITHOUT WRITTEN PERMISSION		DIV.	CP