

Distributed by:

JAMECO[®]
ELECTRONICS

www.Jameco.com ♦ 1-800-831-4242

The content and copyrights of the attached
material are the property of its owner.

Jameco Part Number 520946

FEATURES AND SPECIFICATIONS

Features and Benefits

- Intermateable, intermountable and interchangeable with industry-standard versions
- Cross tested to assure industry compatibility
- Positive locks
- Fully isolated contacts

Reference Information

Product Specification: PS-42022-0001
 Packaging: Tray
 UL File No.: E29179
 CSA File No.: LR19980
 Designed In: Inches

Electrical

Voltage: 600V
 Current:

Circuit	2	3	4	6	9	12	15
Amperes	13.5	13.5	13.5	11.0	11.0	11.0	11.0

Contact Resistance: 3.5mΩ max.
 Dielectric Withstanding Voltage: 2900V
 Insulation Resistance: 1000 MΩ min.

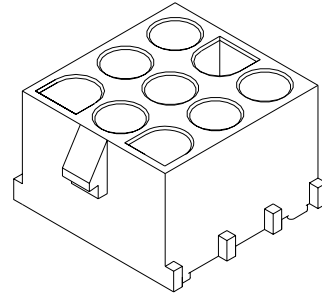
Physical

Header Housing: See Table
 Header Contact: Phosphor Bronze
 Plating: Tin
 Operating Temperature: -55 to +105°C

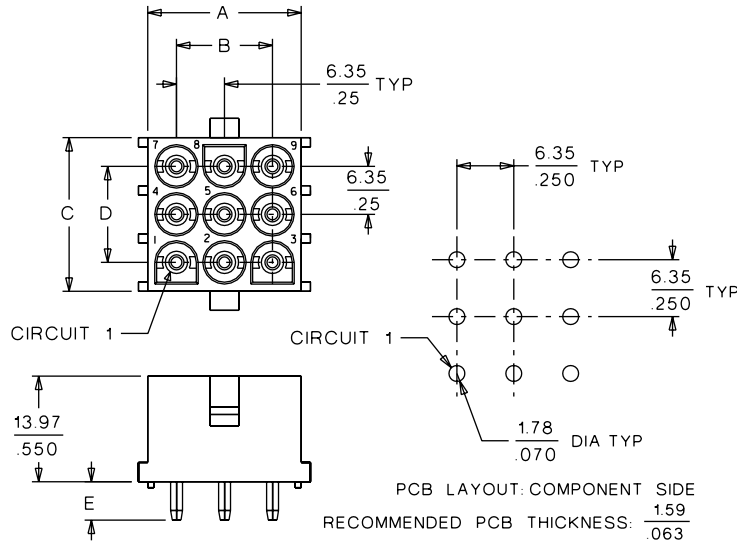


**2.13mm (.084") Diameter
 MLX
 Power Connector
 Header**

**42002
 Vertical**



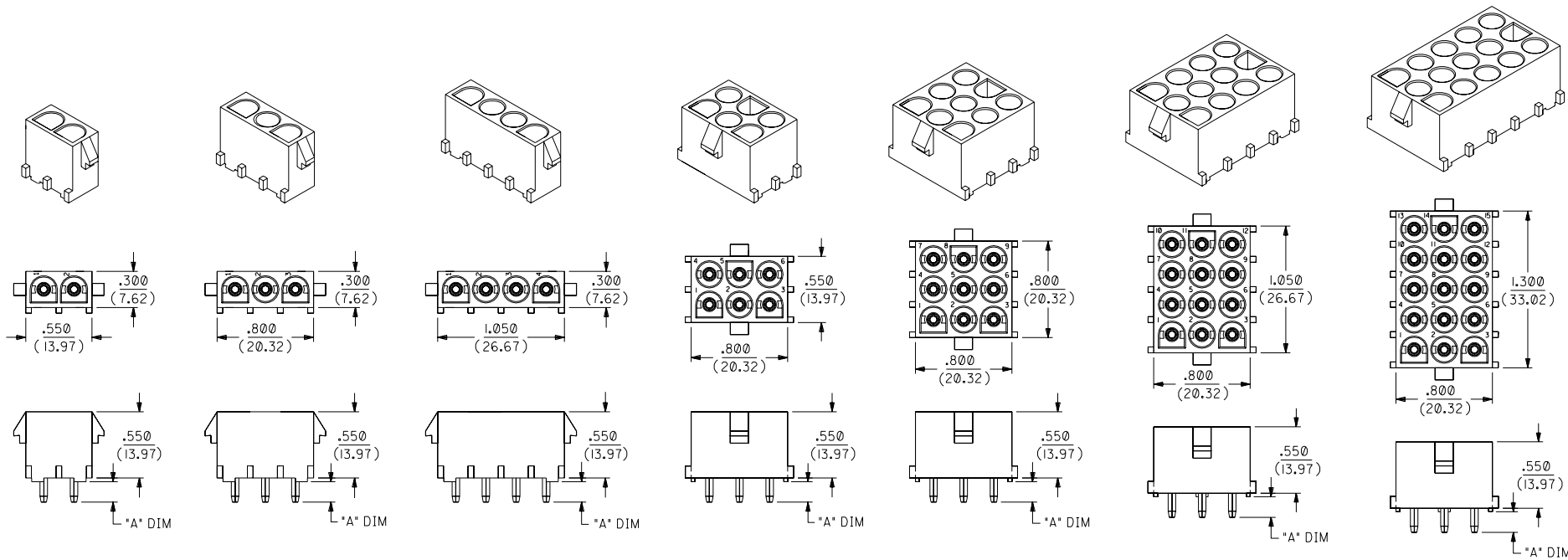
CATALOG DRAWING (FOR REFERENCE ONLY)



ORDERING INFORMATION AND DIMENSIONS

Circuits	Order No.				Housing	Dimension				
	White		Brick Red			A	B	C	D	E
	Male	Female	Male	Female						
2	• 10-84-4020	• 10-84-4022			94V-2	7.62 (.300)		13.97 (.550)	6.35 (.250)	4.30 (.170)
	10-84-5020	10-84-5021	• 10-84-4021	• 10-84-4023	94V-0					
3	• 10-84-4030	• 10-84-4032			94V-2	7.62 (.300)		20.32 (.800)	12.70 (.500)	4.30 (.170)
	10-84-5030	10-84-5031	• 10-84-4031	• 10-84-4033	94V-0					
4	• 10-84-4040	• 10-84-4042			94V-2	7.62 (.300)		26.67 (1.050)	19.05 (.750)	4.30 (.170)
	10-84-5040	10-84-5041	• 10-84-4041	• 10-84-4043	94V-0					
6	• 10-84-4060	• 10-84-4062			94V-2	20.32 (.800)	12.70 (.500)	13.97 (.550)	6.35 (.250)	4.30 (.170)
	10-84-5060	10-84-5061	• 10-84-4061	• 10-84-4063	94V-0					
9	• 10-84-4090	• 10-84-4092			94V-2	20.32 (.800)	12.70 (.500)	20.32 (.800)	12.70 (.500)	4.30 (.170)
	10-84-5090	10-84-5091	• 10-84-4091	• 10-84-4093	94V-0					
12	• 10-84-4120	• 10-84-4122			94V-2	20.32 (.800)	12.70 (.500)	26.67 (1.050)	19.05 (.750)	4.30 (.170)
	10-84-5120	10-84-5121	• 10-84-4121	• 10-84-4123	94V-0					
15	• 10-84-4150	• 10-84-4152			94V-2	20.32 (.800)	12.70 (.500)	33.02 (1.300)	25.40 (1.000)	4.30 (.170)
	10-84-5150	10-84-5151	• 10-84-4151	• 10-84-4153	94V-0					

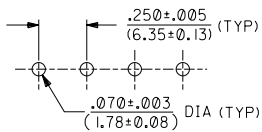
• US Standard Product, available through Molex franchised distributors



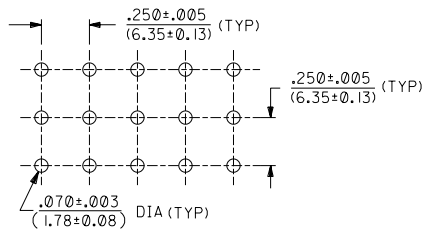
SEE CHARTS FOR "A" DIMENSION

P.C. BOARD MOUNTING DIMENSIONS

2, 3, & 4 POSITION HEADER ASSEMBLIES



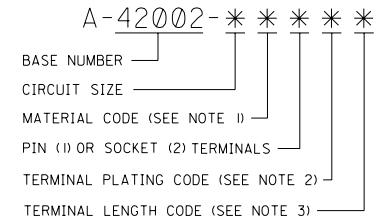
6, 9, 12 & 15 POSITION HEADER ASSEMBLIES



NOTES:

- 1) MATERIAL CODES:
 "A"= NYLON 6/6, 94V-2, NATURAL
 "B"= POLYESTER, 94V-0, BRICK RED
 "C"= PLOYESTER, 94V-0, WHITE/NATURAL
- 2) PLATING CODES:
 "A" = HOT TIN DIP 20 m.I./(.051 MICRONS) MINIMUM. PER SDES-88-P901
 "B" = 30 m.I./(.076 MICRONS) MINIMUM SELECT GOLD, AND 75 m.I./(.191 MICRONS) MINIMUM SELECT TIN - LEAD OVER 50 m.I./(.127 MICRONS) MINIMUM NICKEL OVERALL.
- 3) TERMINAL LENGTH CODES:
 1= TERMINAL FOR .062/(1.57) THICK PC BOARD
 2= TERMINAL FOR .125/(3.18) THICK PC BOARD
- 4) DIMENSIONS ARE FOR REFERENCE ONLY UNLESS INDICATED OTHERWISE.
- 5) HEADER ASSEMBLY HOUSINGS MATE WITH :
 - PLUG HOUSINGS, .084/(2.13) DIA. SERIES: (42021-***)
- 6) CONTACTS ARE ON .250/(6.35) GRID CENTERLINE SPACING.

LEGEND:



5	B1			
4	B1	C1		REVISED AS PER 1.2003-0106 03/06/25
3	B1			
2	B1	C		ADD BLK TOL UCR1998-0296 98-6-B KSS
1	C1			
MFG.	SH.	REV.	LTR.	REVISIONS

DIMENSIONS SHOWN (METRIC) INCH UNLESS OTHERWISE SPECIFIED TOLERANCES: ANGULAR ± 1/2°		▽ = 0		= 0		REVISE ONLY ON CAD SYSTEM	
3 PLACE ± .010		---		---		TITLE	
2 PLACE ± .014		± 0.25		---		HEADER HOUSING ASSEMBLIES, .084/(2.13) DIA. SERIES	
1 PLACE ---		± 0.36		---		MOLEX INCORPORATED SHEET NO. DATE U.S.A. 1 OF 5 11/16/87	
DRAFT WHERE APPLICABLE MUST REMAIN WITHIN DIMENSIONS		PART NO. SDA-42002X1		DRWG. NO. SDA-42002-*****		SEE CHART	
DRWG. BY: RK	CHK'D. BY: GWF	SCALE: 1.5:1	FILE NAME: SDA42002X1.DGN	THIS DRAWING CONTAINS INFORMATION THAT IS PROPRIETARY TO MOLEX INC. AND SHOULD NOT BE USED WITHOUT WRITTEN PERMISSION		DIV. CP C	

	13	12	11	10	9	8	7	6	42002	4	3	2	1		
J	PART NO.	ENG. NO.	CIRCUIT SIZE	HOUSING MATERIAL (SEE NOTE 1)	PIN (1) OR SOCKET (2) TERMINALS	TERMINAL PLATING (SEE NOTE 2)	TERMINAL LENGTH (SEE NOTE 3)	*A" DIM ±.015							J
	10-84-4020	A-42002-2A IA I	2	A	1	A	1	.17/(4,3)							
	10-84-4021	A-42002-2B IA I		B	1	A	1								
	10-84-5020	A-42002-2C IA I		C	1	A	1								
	10-84-4022	A-42002-2A2A I		A	2	A	1								
	10-84-4023	A-42002-2B2A I		B	2	A	1								
	10-84-5021	A-42002-2C2A I		C	2	A	1								
I	PRELIMINARY	A-42002-2A IA2	A	1	A	2	.23/(5,8)							I	
	PRELIMINARY	A-42002-2B IA2	B	1	A	2									
	PRELIMINARY	A-42002-2C IA2	C	1	A	2									
	PRELIMINARY	A-42002-2A2A2	A	2	A	2									
	PRELIMINARY	A-42002-2B2A2	B	2	A	2									
	PRELIMINARY	A-42002-2C2A2	C	2	A	2									
H	10-84-4030	A-42002-3A IA I	3	A	1	A	1	.17/(4,3)							H
	10-84-4031	A-42002-3B IA I		B	1	A	1								
	10-84-5030	A-42002-3C IA I		C	1	A	1								
	10-84-4032	A-42002-3A2A I		A	2	A	1								
	10-84-4033	A-42002-3B2A I		B	2	A	1								
	10-84-5031	A-42002-3C2A I		C	2	A	1								
G	PRELIMINARY	A-42002-3A IA2	A	1	A	2	.23/(5,8)							G	
	PRELIMINARY	A-42002-3B IA2	B	1	A	2									
	PRELIMINARY	A-42002-3C IA2	C	1	A	2									
	PRELIMINARY	A-42002-3A2A2	A	2	A	2									
	PRELIMINARY	A-42002-3B2A2	B	2	A	2									
	PRELIMINARY	A-42002-3C2A2	C	2	A	2									
F	10-84-4040	A-42002-4A IA I	4	A	1	A	1	.17/(4,3)							F
	10-84-4041	A-42002-4B IA I		B	1	A	1								
	10-84-5040	A-42002-4C IA I		C	1	A	1								
	10-84-4042	A-42002-4A2A I		A	2	A	1								
	10-84-4043	A-42002-4B2A I		B	2	A	1								
	10-84-5041	A-42002-4C2A I		C	2	A	1								
E	PRELIMINARY	A-42002-4A IA2	A	1	A	2	.23/(5,8)							E	
	PRELIMINARY	A-42002-4B IA2	B	1	A	2									
	PRELIMINARY	A-42002-4C IA2	C	1	A	2									
	PRELIMINARY	A-42002-4A2A2	A	2	A	2									
	PRELIMINARY	A-42002-4B2A2	B	2	A	2									
	PRELIMINARY	A-42002-4C2A2	C	2	A	2									
D	10-84-4060	A-42002-6A IA I	6	A	1	A	1	.17/(4,3)							D
	10-84-4061	A-42002-6B IA I		B	1	A	1								
	10-84-5060	A-42002-6C IA I		C	1	A	1								
	10-84-4062	A-42002-6A2A I		A	2	A	1								
	10-84-4063	A-42002-6B2A I		B	2	A	1								
	10-84-5061	A-42002-6C2A I		C	2	A	1								
C	PRELIMINARY	A-42002-6A IA2	A	1	A	2	.23/(5,8)							C	
	PRELIMINARY	A-42002-6B IA2	B	1	A	2									
	PRELIMINARY	A-42002-6C IA2	C	1	A	2									
	PRELIMINARY	A-42002-6A2A2	A	2	A	2									
	PRELIMINARY	A-42002-6B2A2	B	2	A	2									
	PRELIMINARY	A-42002-6C2A2	C	2	A	2									
B	10-84-4090	A-42002-9A IA I	9	A	1	A	1	.17/(4,3)							B
	10-84-4091	A-42002-9B IA I		B	1	A	1								
	10-84-5090	A-42002-9C IA I		C	1	A	1								
	10-84-4092	A-42002-9A2A I		A	2	A	1								
	10-84-4093	A-42002-9B2A I		B	2	A	1								
	10-84-5091	A-42002-9C2A I		C	2	A	1								
A	PRELIMINARY	A-42002-9A IA2	A	1	A	2	.23/(5,8)							A	
	PRELIMINARY	A-42002-9B IA2	B	1	A	2									
	PRELIMINARY	A-42002-9C IA2	C	1	A	2									
	PRELIMINARY	A-42002-9A2A2	A	2	A	2									
	PRELIMINARY	A-42002-9B2A2	B	2	A	2									
	PRELIMINARY	A-42002-9C2A2	C	2	A	2									

LEGEND:

A-42002-* * * * *

BASE NUMBER

CIRCUIT SIZE

MATERIAL CODE (SEE NOTE 1)

PIN (1) OR SOCKET (2) TERMINALS

TERMINAL PLATING CODE (SEE NOTE 2)

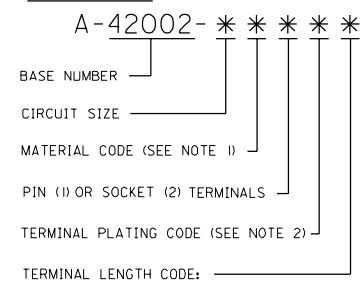
TERMINAL LENGTH CODE (SEE NOTE 3)

B1	SEE SHEET 1
A	SEE SHEET 1
I	SEE SHEET 1

DIMENSIONS SHOWN (METRIC) INCH UNLESS OTHERWISE SPECIFIED TOLERANCES ANGULAR ± 1/2°		▽ = 0 ▼ = 0		MFG. SH. REV. LTR. REVISIONS	
TITLE HEADER HOUSING ASSEMBLIES, .084/(2,13) DIA. SERIES				REVISE ONLY ON CAD SYSTEM	
MOLEX INCORPORATED LITTLE ROCK, AR 72640		SHEET NO. 2		DATE 11/16/87	
PART NO. SDA-42002-*****		DRAWING NO.		CP C	
SEE CHART		FILE NAME SDA42002X2.DGN		THIS DRAWING CONTAINS INFORMATION THAT IS PROPRIETARY TO MOLEX INC. AND SHOULD NOT BE USED WITHOUT WRITTEN PERMISSION.	
DRWG. BY: RK	CHK'D. BY: GWF	SCALE: --:--			
APP'D. BY: GWF					

	13	12	11	10	9	8	7	6	42002	4	3	2	1			
J	PART NO.	ENG. NO.	CIRCUIT SIZE	HOUSING MATERIAL (SEE NOTE 1)	PIN (1) OR SOCKET (2) TERMINALS	TERMINAL PLATING (SEE NOTE 2)	TERMINAL LENGTH (SEE NOTE 3)	*A" DIM ±.015							J	
J	IO-84-4024	A-42002-2A IB1	2	A	1	B	1	.17/(4.3)							J	
	IO-84-4025	A-42002-2B IB1		B	1	B	1									I
	IO-84-5022	A-42002-2C IB1		C	1	B	1									
I	IO-84-4026	A-42002-2A2B1		A	2	B	1								G	
	IO-84-4027	A-42002-2B2B1		B	2	B	1									F
	IO-84-5023	A-42002-2C2B1		C	2	B	1									
H	PRELIMINARY	A-42002-2A IB2		A	1	B	2	.23/(5.8)							D	
	PRELIMINARY	A-42002-2B IB2		B	1	B	2									C
	PRELIMINARY	A-42002-2C IB2		C	1	B	2									
G	PRELIMINARY	A-42002-2A2B2	A	2	B	2								A		
	PRELIMINARY	A-42002-2B2B2	B	2	B	2										
	PRELIMINARY	A-42002-2C2B2	C	2	B	2										
F	IO-84-4034	A-42002-3A IB1	3	A	1	B	1	.17/(4.3)								
	IO-84-4035	A-42002-3B IB1		B	1	B	1									
	IO-84-5032	A-42002-3C IB1		C	1	B	1									
E	IO-84-4036	A-42002-3A2B1		A	2	B	1									
	IO-84-4037	A-42002-3B2B1		B	2	B	1									
	IO-84-5033	A-42002-3C2B1		C	2	B	1									
D	PRELIMINARY	A-42002-3A IB2		A	1	B	2	.23/(5.8)								
	PRELIMINARY	A-42002-3B IB2		B	1	B	2									
	PRELIMINARY	A-42002-3C IB2		C	1	B	2									
C	PRELIMINARY	A-42002-3A2B2	A	2	B	2										
	PRELIMINARY	A-42002-3B2B2	B	2	B	2										
	PRELIMINARY	A-42002-3C2B2	C	2	B	2										
B	IO-84-4044	A-42002-4A IB1	4	A	1	B	1	.17/(4.3)								
	IO-84-4045	A-42002-4B IB1		B	1	B	1									
	IO-84-5042	A-42002-4C IB1		C	1	B	1									
A	IO-84-4046	A-42002-4A2B1		A	2	B	1									
	IO-84-4047	A-42002-4B2B1		B	2	B	1									
	IO-84-5043	A-42002-4C2B1		C	2	B	1									
J	PRELIMINARY	A-42002-4A IB2		A	1	B	2	.23/(5.8)								
	PRELIMINARY	A-42002-4B IB2		B	1	B	2									
	PRELIMINARY	A-42002-4C IB2		C	1	B	2									
I	PRELIMINARY	A-42002-4A2B2	A	2	B	2										
	PRELIMINARY	A-42002-4B2B2	B	2	B	2										
	PRELIMINARY	A-42002-4C2B2	C	2	B	2										
H	IO-84-4064	A-42002-6A IB1	6	A	1	B	1	.17/(4.3)								
	IO-84-4065	A-42002-6B IB1		B	1	B	1									
	IO-84-5062	A-42002-6C IB1		C	1	B	1									
G	IO-84-4066	A-42002-6A2B1		A	2	B	1									
	IO-84-4067	A-42002-6B2B1		B	2	B	1									
	IO-84-5063	A-42002-6C2B1		C	2	B	1									
F	PRELIMINARY	A-42002-6A IB2		A	1	B	2	.23/(5.8)								
	PRELIMINARY	A-42002-6B IB2		B	1	B	2									
	PRELIMINARY	A-42002-6C IB2		C	1	B	2									
E	PRELIMINARY	A-42002-6A2B2	A	2	B	2										
	PRELIMINARY	A-42002-6B2B2	B	2	B	2										
	PRELIMINARY	A-42002-6C2B2	C	2	B	2										
D	IO-84-4094	A-42002-9A IB1	9	A	1	B	1	.17/(4.3)								
	IO-84-4095	A-42002-9B IB1		B	1	B	1									
	IO-84-5092	A-42002-9C IB1		C	1	B	1									
C	IO-84-4096	A-42002-9A2B1		A	2	B	1									
	IO-84-4097	A-42002-9B2B1		B	2	B	1									
	IO-84-5093	A-42002-9C2B1		C	2	B	1									
B	PRELIMINARY	A-42002-9A IB2		A	1	B	2	.23/(5.8)								
	PRELIMINARY	A-42002-9B IB2		B	1	B	2									
	PRELIMINARY	A-42002-9C IB2		C	1	B	2									
A	PRELIMINARY	A-42002-9A2B2	A	2	B	2										
	PRELIMINARY	A-42002-9B2B2	B	2	B	2										
	PRELIMINARY	A-42002-9C2B2	C	2	B	2										

LEGEND:



42002

B1 SEE SHEET 1

DIMENSIONS SHOWN (METRIC) INCH		▽ = 0		▽ = 0		REVISE ONLY ON CAD SYSTEM	
UNLESS OTHERWISE SPECIFIED TOLERANCES ANGLES ARE 1/2°		TITLE		ASSEMBLY, PIN AND SOCKET HEADERS .084/(2.13) DIA. SERIES		DATE 96/03/29	
INCH METRIC		MOLEX INCORPORATED		SHEET NO. 4		U.S.A.	
3 PLACE ± ---		LITTLE, JILL		60532		DRAWN BY CM	
2 PLACE ± ---		PART NO.		SDA-42002-*****		CHK'D BY KBP	
1 PLACE --- ± ---		FILE NAME		SD42002X7		APP'D BY RAS	
DRAFT WHERE APPLICABLE MUST REMAIN WITHIN DIMENSIONS		SCALE		---:---		THIS DRAWING CONTAINS INFORMATION THAT IS PROPRIETARY TO MOLEX INC. AND SHOULD NOT BE USED WITHOUT WRITTEN PERMISSION	

	13	12	11	10	9	8	7	6	42002	4	3	2	1		
J	PART NO.	ENG. NO.	CIRCUIT SIZE	HOUSING MATERIAL (SEE NOTE 1)	PIN (1) OR SOCKET (2) TERMINALS	TERMINAL PLATING (SEE NOTE 2)	TERMINAL LENGTH (SEE NOTE 3)	"A" DIM ±.015							J
	10-84-4124	A-42002-12A1B1	12	A	1	B	1	.17/(4,3)							
	10-84-4125	A-42002-12B1B1		B	1	B	1								
	10-84-5122	A-42002-12C1B1		C	1	B	1								
	10-84-4126	A-42002-12A2B1		A	2	B	1								
	10-84-4127	A-42002-12B2B1		B	2	B	1								
	10-84-5123	A-42002-12C2B1		C	2	B	1								
I	PRELIMINARY	A-42002-12A1B2	A	1	B	2	.23/(5,8)							I	
	PRELIMINARY	A-42002-12B1B2	B	1	B	2									
	PRELIMINARY	A-42002-12C1B2	C	1	B	2									
	PRELIMINARY	A-42002-12A2B2	A	2	B	2									
	PRELIMINARY	A-42002-12B2B2	B	2	B	2									
	PRELIMINARY	A-42002-12C2B2	C	2	B	2									
H	10-84-4154	A-42002-15A1B1	15	A	1	B	1	.17/(4,3)							H
	10-84-4155	A-42002-15B1B1		B	1	B	1								
	10-84-5152	A-42002-15C1B1		C	1	B	1								
	10-84-4156	A-42002-15A2B1		A	2	B	1								
	10-84-4157	A-42002-15B2B1		B	2	B	1								
	10-84-5153	A-42002-15C2B1		C	2	B	1								
G	PRELIMINARY	A-42002-15A1B2	A	1	B	2	.23/(5,8)							G	
	PRELIMINARY	A-42002-15B1B2	B	1	B	2									
	PRELIMINARY	A-42002-15C1B2	C	1	B	2									
	PRELIMINARY	A-42002-15A2B2	A	2	B	2									
	PRELIMINARY	A-42002-15B2B2	B	2	B	2									
	PRELIMINARY	A-42002-15C2B2	C	2	B	2									
F														F	
E														E	
D														D	
C														C	
B														B	
A														A	

LEGEND:

A-42002-*****

- BASE NUMBER
- CIRCUIT SIZE
- MATERIAL CODE (SEE NOTE 1)
- PIN (1) OR SOCKET (2) TERMINALS
- TERMINAL PLATING CODE (SEE NOTE 2)
- TERMINAL LENGTH CODE (SEE NOTE 3)

42002

B1 SEE SHEET 1

DIMENSIONS SHOWN (METRIC) INCH UNLESS OTHERWISE SPECIFIED TOLERANCES: ANGULAR ± 1/2°		▽ = 0	◻ = 0	REVISIONS																						
TITLE ASSEMBLY, PIN AND SOCKET HEADERS .084/(2.13) DIA. SERIES		REVISE ONLY ON CAD SYSTEM																								
<table border="1"> <tr> <th>PLACES</th> <th>INCH</th> <th>METRIC</th> </tr> <tr> <td>3 PLACE</td> <td>± .001</td> <td>± .025</td> </tr> <tr> <td>2 PLACE</td> <td>± .005</td> <td>± .127</td> </tr> <tr> <td>1 PLACE</td> <td>± .010</td> <td>± .254</td> </tr> </table>		PLACES	INCH	METRIC	3 PLACE	± .001	± .025	2 PLACE	± .005	± .127	1 PLACE	± .010	± .254	<table border="1"> <tr> <td>MFG.</td> <td>SH.</td> <td>REV.</td> <td>LTR.</td> <td>REVISIONS</td> </tr> <tr> <td></td> <td></td> <td></td> <td></td> <td></td> </tr> </table>			MFG.	SH.	REV.	LTR.	REVISIONS					
PLACES	INCH	METRIC																								
3 PLACE	± .001	± .025																								
2 PLACE	± .005	± .127																								
1 PLACE	± .010	± .254																								
MFG.	SH.	REV.	LTR.	REVISIONS																						
<table border="1"> <tr> <td>DRWG. NO.</td> <td>CM</td> <td>ENGR. BY</td> <td>KBP</td> </tr> <tr> <td>APP'D. BY</td> <td>RAS</td> <td>SCALE</td> <td>1:1</td> </tr> </table>		DRWG. NO.	CM	ENGR. BY	KBP	APP'D. BY	RAS	SCALE	1:1	<table border="1"> <tr> <td>MOLEX INCORPORATED</td> <td>SHEET NO.</td> <td>DATE</td> </tr> <tr> <td>LITTLEFILL, ILL. 60532 U.S.A.</td> <td>5</td> <td>96/03/29</td> </tr> </table>			MOLEX INCORPORATED	SHEET NO.	DATE	LITTLEFILL, ILL. 60532 U.S.A.	5	96/03/29								
DRWG. NO.	CM	ENGR. BY	KBP																							
APP'D. BY	RAS	SCALE	1:1																							
MOLEX INCORPORATED	SHEET NO.	DATE																								
LITTLEFILL, ILL. 60532 U.S.A.	5	96/03/29																								
<table border="1"> <tr> <td>FILE NAME</td> <td>SD42002X8 DGN</td> </tr> </table>		FILE NAME	SD42002X8 DGN	<table border="1"> <tr> <td>PART NO.</td> <td>SDA-42002-*****</td> </tr> <tr> <td>SEE CHART</td> <td>CP</td> </tr> </table>			PART NO.	SDA-42002-*****	SEE CHART	CP																
FILE NAME	SD42002X8 DGN																									
PART NO.	SDA-42002-*****																									
SEE CHART	CP																									
<small>THIS DRAWING CONTAINS INFORMATION THAT IS PROPRIETARY TO MOLEX INC. AND SHOULD NOT BE USED WITHOUT WRITTEN PERMISSION.</small>																										