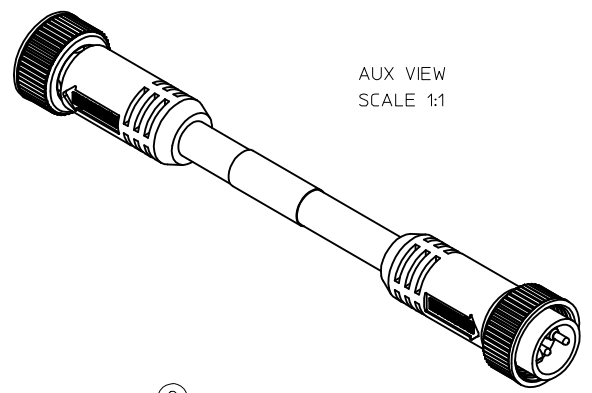


PART NUMBER	ENGINEERING NO.	LENGTH
1300100147	112020A01F060	6.00' +2.19" - 0 [1.8M +55.6mm - 0]
1300100152	112020A01F120	12.00' +3.50" - 0 [3.7M +88.9mm - 0]
1300100159	112020A01F200	20.00' +6.50" - 0 [6.1M +165.1mm - 0]

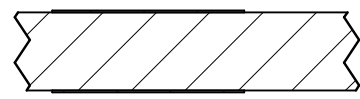
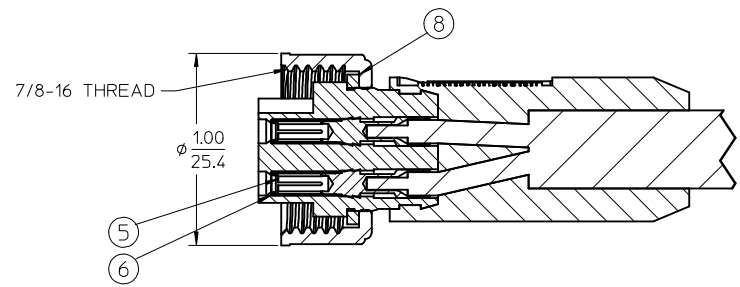


WIRING DIAGRAM

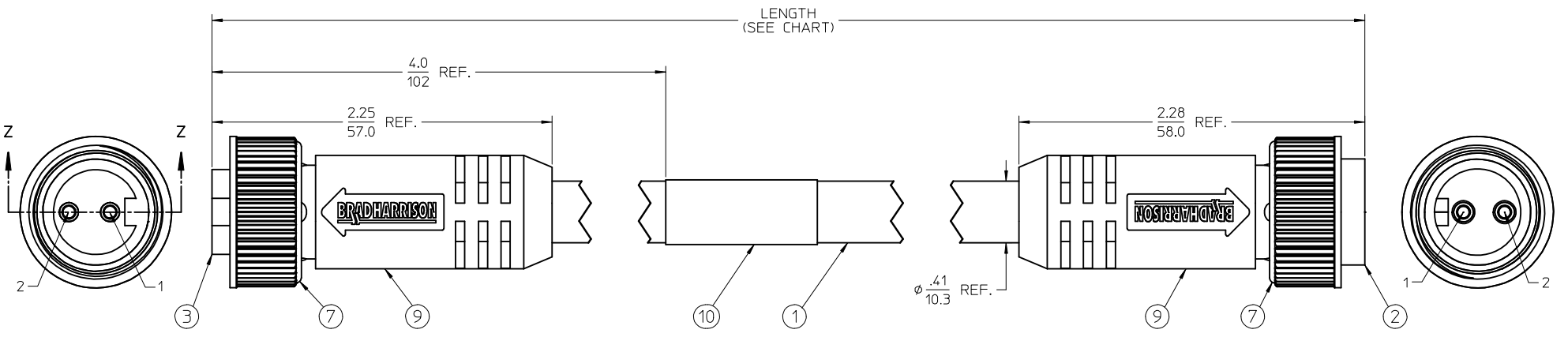
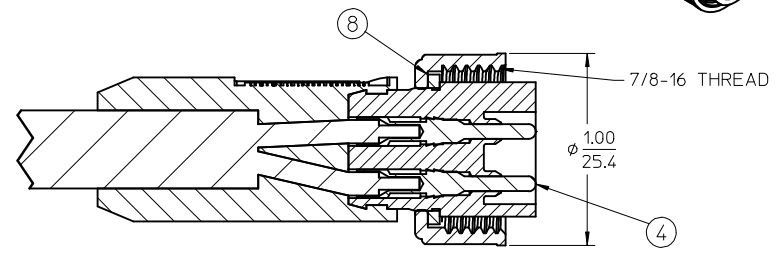
- NOTES:
1. MATERIALS: SEE TABLE
 2. FINISHES: SEE TABLE
 3. CABLE: #16/2 ST00W/ST PVC
 4. ELECTRICAL DATA:
MAX. VOLTAGE: 600 VAC/VDC
MAX. CURRENT: 13 AMPS
 5. ENVIRONMENTAL:
PROTECTION IP 67
TEMPERATURE RANGE: -20 TO 105 C
 6. WRAP LABEL IS MARKED WITH P/N, DATE CODE, VOLTAGE & AMPERAGE
 7. ASSEMBLY IS RoHS COMPLIANT



AUX VIEW
SCALE 1:1



Section Z-Z



ITEM	QTY.	DESCRIPTION	MATERIAL	FINISH
10	1	LABEL	MYLAR	BLACK/YELLOW
9	2	OVERMOLD	PVC	YELLOW
8	2	FRICION RING	NYLON	WHITE
7	2	COUPLING NUT	ZINC DIECAST	BLACK E-COAT
6	2	SOCKET SLEECE	STAINLESS STEEL	
5	2	CONTACT SOCKET	BRASS	GOLD OVER NICKEL
4	2	CONTACT PIN	BRASS	GOLD OVER NICKEL
3	1	FEMALE INSERT, 2 POLE	PVC	YELLOW
2	1	MALE INSERT, 2 POLE	PVC	YELLOW
1	1	CABLE, ST00W/ST #16/2	PVC JACKET	YELLOW

RELEASED DRAWING
EC NO: MNA2009-0846
DRAWN BY: DRWINLHARTMANN 2009/06/17
CHKD BY: CHIKDRSTONE
APPR: JFMURPHY 2009/08/14

QUALITY SYMBOLS
▽=0
▽=0

GENERAL TOLERANCES (UNLESS SPECIFIED)

	mm	INCH
4 PLACES	± .005	± .0005
3 PLACES	± .005	± .0005
2 PLACES	± .010	± .0010
1 PLACE	± .020	± .0020

ANGULAR ±1/2°

DRAFT WHERE APPLICABLE MUST REMAIN WITHIN DIMENSIONS

DIMENSION STYLE
IN/MM

DRAWN BY: LHARTMANN DATE: 2009/06/17
CHECKED BY: RSTONE DATE: 2009/06/30
APPROVED BY: JFMURPHY DATE: 2009/06/30

MATERIAL NO. SEE CHART

SCALE 2:1
DESIGN UNITS INCH
THIRD ANGLE PROJECTION

MINI-CHANGE CORDSET
2 POLE MA/FE ST/ST
#16/2 YELLOW ST00W/ST

MOLEX INCORPORATED

DOCUMENT NO. SD-130010-003
SHEET NO. 1 OF 1

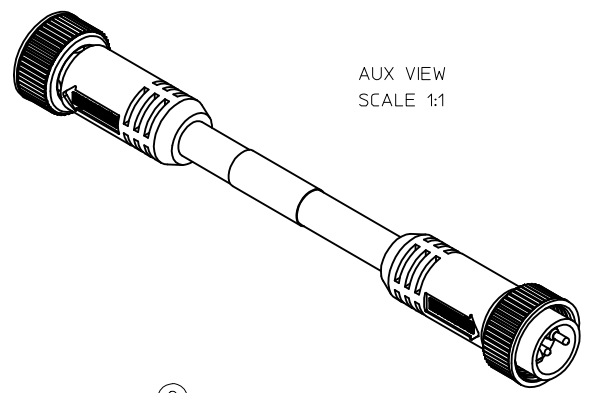
THIS DRAWING CONTAINS INFORMATION THAT IS PROPRIETARY TO MOLEX INCORPORATED AND SHOULD NOT BE USED WITHOUT WRITTEN PERMISSION

PART NUMBER	ENGINEERING NO.	LENGTH
1300100147	112020A01F060	6.00' +2.19" - 0 [1.8M +55.6mm - 0]
1300100152	112020A01F120	12.00' +3.50" - 0 [3.7M +88.9mm - 0]
1300100159	112020A01F200	20.00' +6.50" - 0 [6.1M +165.1mm - 0]

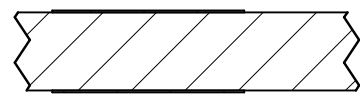
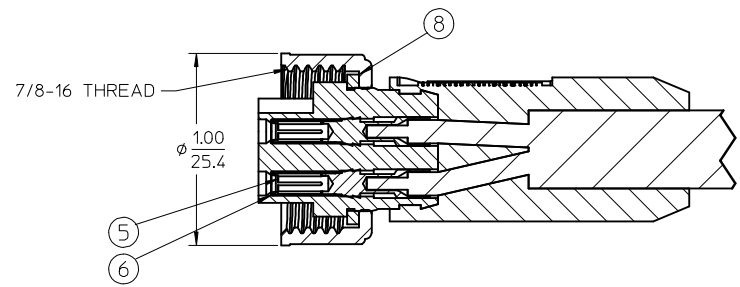


WIRING DIAGRAM

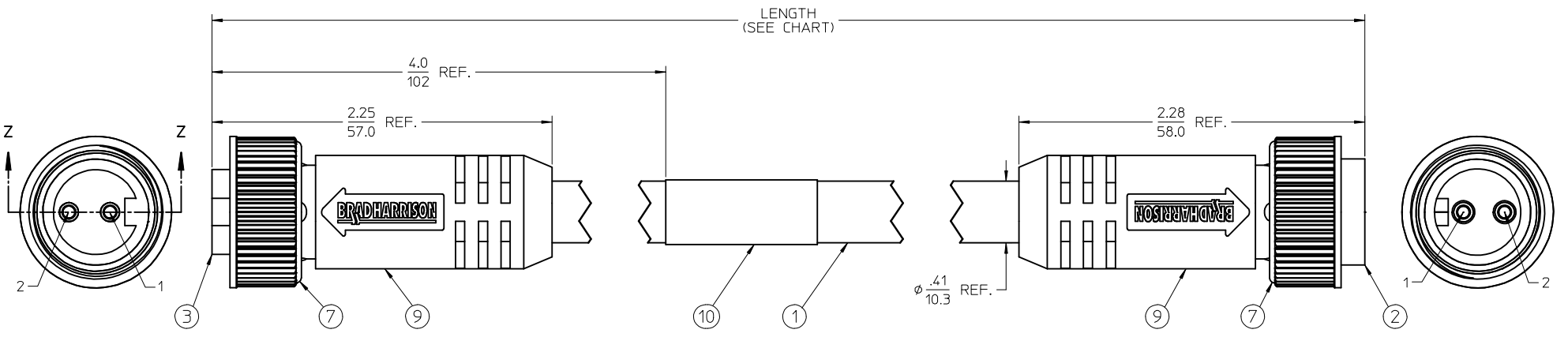
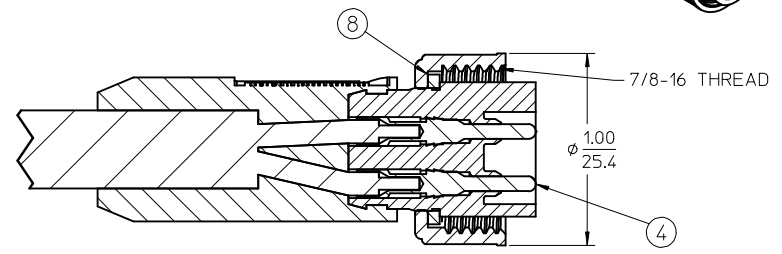
- NOTES:
1. MATERIALS: SEE TABLE
 2. FINISHES: SEE TABLE
 3. CABLE: #16/2 ST00W/ST PVC
 4. ELECTRICAL DATA:
MAX. VOLTAGE: 600 VAC/VDC
MAX. CURRENT: 13 AMPS
 5. ENVIRONMENTAL:
PROTECTION IP 67
TEMPERATURE RANGE: -20 TO 105 C
 6. WRAP LABEL IS MARKED WITH P/N, DATE CODE, VOLTAGE & AMPERAGE
 7. ASSEMBLY IS RoHS COMPLIANT



AUX VIEW
SCALE 1:1



Section Z-Z



ITEM	QTY.	DESCRIPTION	MATERIAL	FINISH
10	1	LABEL	MYLAR	BLACK/YELLOW
9	2	OVERMOLD	PVC	YELLOW
8	2	FRICION RING	NYLON	WHITE
7	2	COUPLING NUT	ZINC DIECAST	BLACK E-COAT
6	2	SOCKET SLEECE	STAINLESS STEEL	
5	2	CONTACT SOCKET	BRASS	GOLD OVER NICKEL
4	2	CONTACT PIN	BRASS	GOLD OVER NICKEL
3	1	FEMALE INSERT, 2 POLE	PVC	YELLOW
2	1	MALE INSERT, 2 POLE	PVC	YELLOW
1	1	CABLE, ST00W/ST #16/2	PVC JACKET	YELLOW

RELEASED DRAWING
EC NO: MNA2009-0846
DRAWN BY: DRWINLHARTMANN 2009/06/17
CHKDR: CHKHDRSTONE
APPR: JFMURPHY 2009/08/14

QUALITY SYMBOLS
▽=0
▽=0

GENERAL TOLERANCES (UNLESS SPECIFIED)

	mm	INCH
4 PLACES	± .005	± .0005
3 PLACES	± .005	± .0005
2 PLACES	± .010	± .0010
1 PLACE	± .020	± .0020

ANGULAR ±1/2°

DRAFT WHERE APPLICABLE MUST REMAIN WITHIN DIMENSIONS

DIMENSION STYLE
IN/MM

DRAWN BY: LHARTMANN DATE: 2009/06/17
CHECKED BY: RSTONE DATE: 2009/06/30
APPROVED BY: JFMURPHY DATE: 2009/06/30

MATERIAL NO.
SEE CHART

SCALE 2:1
DESIGN UNITS INCH
THIRD ANGLE PROJECTION

MINI-CHANGE CORDSET
2 POLE MA/FE ST/ST
#16/2 YELLOW ST00W/ST

MOLEX INCORPORATED

DOCUMENT NO. SD-130010-003
SHEET NO. 1 OF 1

THIS DRAWING CONTAINS INFORMATION THAT IS PROPRIETARY TO MOLEX INCORPORATED AND SHOULD NOT BE USED WITHOUT WRITTEN PERMISSION