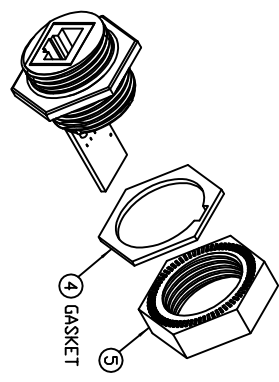
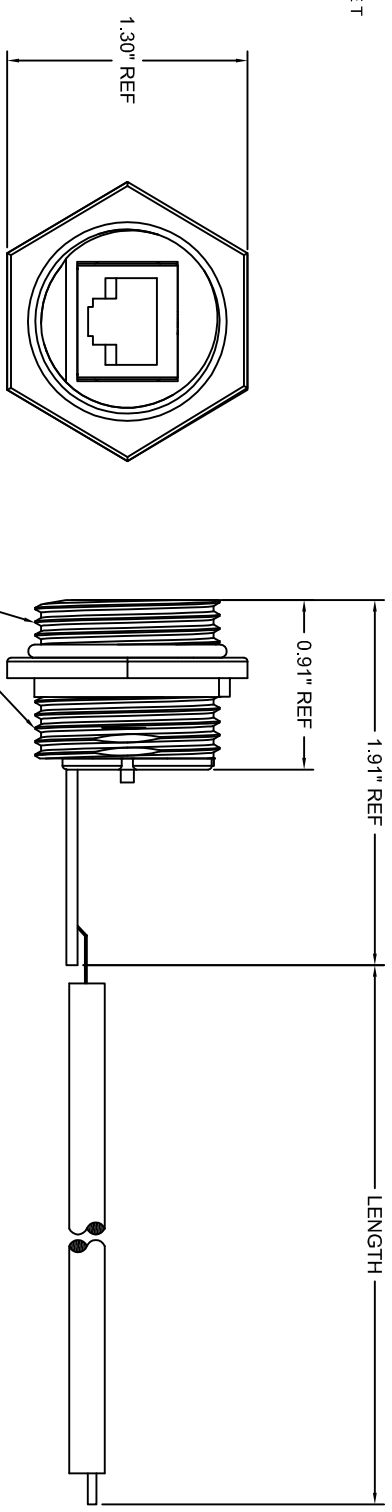


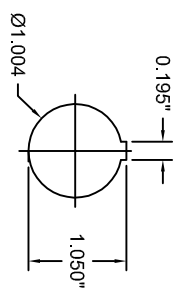
MATERIAL #	ENGINEERING #	LENGTH
1300550019	ENSR1FB5C305	30cm
1300550020	ENSR1FB5W010	1M

1	WHT/BLU
2	BLU
3	WHT/ORG
4	N/C
5	N/C
6	ORG
7	N/C
8	N/C
	DRAIN WIRE

WIRING DIAGRAM - 10-BASE T



NOTES:  
 1) MATERIAL: SEE TABLE  
 2) FINISHES: SEE TABLE  
 3) MATES WITH: RJ45 CORDSET  
 4) ELECTRICAL DATA:  
 MAX. VOLTAGE: 125V DC  
 MAX. CURRENT 1.5A  
 PROTECTION IP67  
 TEMPERATURE RANGE: -20°C TO 80°C



PANEL CUT OUT  
 PANEL THK: .125 MAX. W/GASKET  
 .187 MAX. W/OUT GASKET  
 .062 MIN.

ITEM 4 & 5 REMOVED FOR CLARITY

REFERENCE  
 USE ONLY

ITEM	QTY.	DESCRIPTION	MATERIAL	FINISH
6	1	CABLE - #2618 SHIELDED CAT5E	PVC	BLACK
5	1	HEX NUT	LNP	BLACK
4	1	BULKHEAD GASKET	NITRILE	BLACK
3	1	O RING	VITON	BROWN
2	1	HOUSING	ABS	BLACK
1	1	RJ45 W/PCB SUB ASSY.	---	---

ITEM	QTY.	DESCRIPTION	MATERIAL	FINISH
13				
12				
11				
10				
9				
8				
7				
6				
5				
4				
3				
2				
1				

GENERAL TOLERANCES (UNLESS SPECIFIED)	DIMENSION STYLE	SCALE	DESIGN UNITS	THIRD ANGLE PROJECTION
4 PLACES	MM			
3 PLACES	INCH			
2 PLACES				
1 PLACE				

DESCRIPTION	DRAWN BY	DATE	TITLE	DOCUMENT	SHEET NO.
DRAFT WHERE APPLICABLE MUST REMAIN WITHIN DIMENSIONS	RB		BRAD CONNECTIVITY	ENSR1FB5XXXX	1 OF 1
	CHECKED BY	DATE	RJLHXX - ETHERNET RJ45 BULKHEAD PCB W/ CABLE		
	APPROVED BY	DATE	MOLEX INCORPORATED		

REV	DESCRIPTION	SIZE	MATERIAL NO.	THIS DRAWING CONTAINS INFORMATION THAT IS PROPRIETARY TO MOLEX INCORPORATED AND SHOULD NOT BE USED WITHOUT WRITTEN PERMISSION
C				