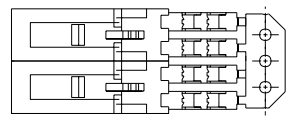
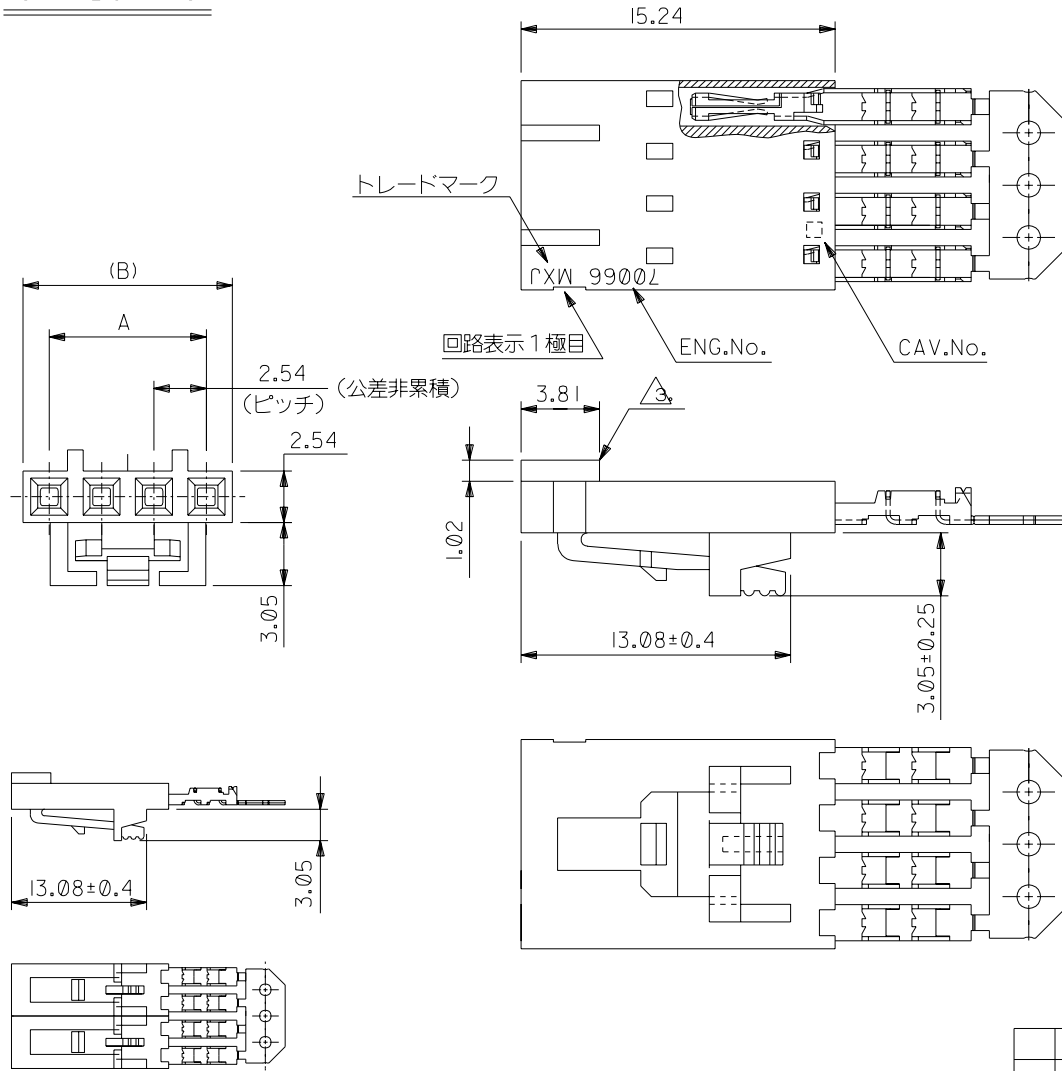


ENG. NO.
SD-70400-06**

EDP NO. #

ALL DIMENSIONS IN METRIC DO NOT SCALE DRAWING

OPTION G



2 極の場合
(SCALE:2-1)

注記:

- 材料
ハウジング: ガラス入りポリエステル UL 94V-0
ターミナル: 燐青銅
- 仕上げ
接点部: 金メッキ 0.38 μm MIN.
圧接部: 錫メッキ 1.91 μm MIN.
下地メッキ: ニッケルメッキ 1.27 μm MIN.
- 極性リブは、2 極及び 3 極の場合 1 箇所のみとする。
但し 3 極の場合のリブは、1 極目と 2 極目の間とする。
- 適合オスコネクター: 70107-****, 70018-****
- 適合ヘッダー: 70389-****, 70391-****
- ハウジングの色: 黒

63.50	60.96	70400-0689	25
60.96	58.42	-0688	24
58.42	55.88	-0687	23
55.88	53.34	-0686	22
53.34	50.80	-0685	21
50.80	48.26	-0684	20
48.26	45.72	-0683	19
45.72	43.18	-0682	18
43.18	40.64	-0681	17
40.64	38.10	-0680	16
38.10	35.56	-0679	15
35.56	33.02	-0678	14
33.02	30.48	-0677	13
30.48	27.94	-0676	12
27.94	25.40	-0675	11
25.40	22.86	-0674	10
22.86	20.32	-0673	9
20.32	17.78	-0672	8
17.78	15.24	-0671	7
15.24	12.70	-0670	6
12.70	10.16	-0669	5
10.16	7.62	-0668	4
7.62	5.08	-0667	3
5.08	2.54	70400-0666	2
(B)	A	MATERIAL No.	極数

材料 MATERIAL		MOLEX-JAPAN CO.,LTD. 日本モレックス株式会社	
注記参照		EDP. NO. #	
C 変更 (J2004-4519)	M.S. 04/05/31	ENG. NO. SD-70400-06**	
B 変更 (T20159)	S.M. H.I. 92/5/20	REV C	
A 変更 (T90267)	H.H. M.S. 89/9/8	TITLE 名称 (OPTION G) SL 2.54 SINGLE ROW ASSEMBLY, FEMALE I.D. CONN. -LEAD FREE-	
0 新規作成 (T80231)	T.F. M.S. 88/11/17	DRAWN BY 11/17/87 CHK'D BY T.FURUHATA M.SASAO	
記号 変更内容 REVISION RECORD	DR. 日付 DATE	APP'D BY S.YAMADA 尺度 SCALE 4-1	
一般公差 GENERAL TOLERANCES	REVISION RECORD	REVISION RECORD	

OPTION A

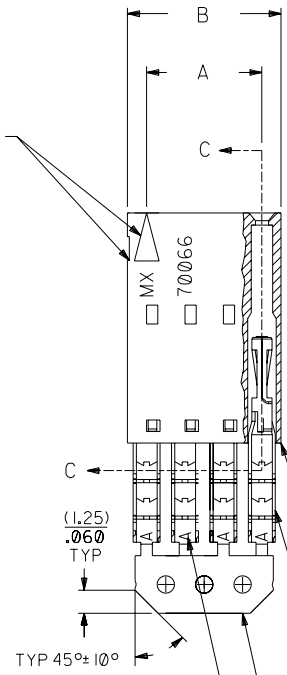


NOTES:

- 1) TO BE USED WITH (24) AWG. STRANDED WIRE WITH (1.35)/.053 DIA. MAX. INSULATION.
- 2) SEE CHART FOR CIRCUIT SIZES.
- 3) STANDARD PACKAGING PER PK-70873-0001. OPTIONAL PACKAGING MAY BE AVAILABLE, REQUEST DWG. PK-70400
- 4) PARTS STACKABLE END TO END AND SIDE BY SIDE ON (2.54)/.100 CENTERS.
- 5) REFER TO PRODUCT SPECIFICATION: PS-70400.
- 6) SEE DWG. SDA-70400-**** (SHT. 5) FOR OPTIONAL HOUSING DETAILS.
- 7) 4 CIRCUIT SHOWN.
- 8) TO MATE WITH MOLEX (2.54)/.100 CENTERLINE HEADERS.

9) 2 CIRCUIT ASSEMBLIES SUPPLIED AS GROUPED PAIRS.

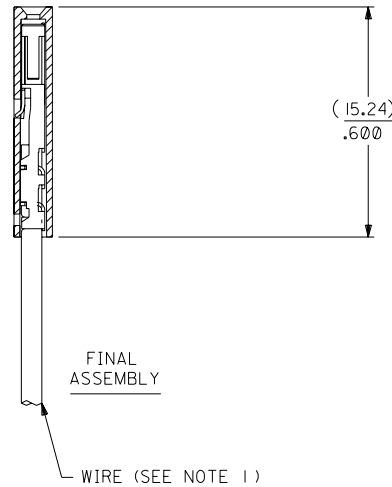
CIRCUIT NO. 1
SLOT OR ARROW



SECTION C-C



PRE-LOADED ASSEMBLY



FINAL ASSEMBLY

HOUSING PART NO. 70066-****
MATERIAL: G.F. POLYESTER, 94V-0

TERMINAL PART NO. 70028-****
MATERIAL: PHOSPHOR BRONZE
PLATING PER ES-88-***

15 GOLD - .000015 MIN. GOLD IN SELECT AREA WITH .000075 MIN. TIN IN SELECT AREA OVER .000050 MIN. NICKEL OVER-ALL.

*THE PRIMARY SHIPPING CARTON WILL BE LABELED "COMPLIANT TO ROHS DIRECTIVE 2002/95/EC AND ELV ANNEX II OF DIRECTIVE 2000/53/EC". CARTONS WITHOUT THIS LABEL MAY CONTAIN PRODUCT WITH LEAD.

I.D. SLOT CODE TO WIRE GAUGE CHART	
I.D. SLOT CODE	WIRE GAUGE
A	24 AWG.

PLATING CODE (STRIPE ON CARRIER STRIP)	
PLATING	COLOR
15 GOLD	YELLOW

CKT. SIZE	A	B	EDP. NO.	ENG. NO.
2	(2.54) .100	(5.05) .199	14-56-2021	A-70400-0526
3	(5.08) .200	(7.59) .299	14-56-2031	A-70400-0527
4	(7.62) .300	(10.13) .399	14-56-2041	A-70400-0528
5	(10.16) .400	(12.67) .499	14-56-2051	A-70400-0529
6	(12.70) .500	(15.21) .599	14-56-2061	A-70400-0530
7	(15.24) .600	(17.75) .699	14-56-2071	A-70400-0531
8	(17.78) .700	(20.29) .799	14-56-2081	A-70400-0532
9	(20.32) .800	(22.83) .899	14-56-2091	A-70400-0533
10	(22.86) .900	(25.37) .999	14-56-2101	A-70400-0534
11	(25.54) 1.000	(27.91) 1.099	14-56-2111	A-70400-0535
12	(27.94) 1.100	(30.45) 1.199	14-56-2121	A-70400-0536
13	(30.48) 1.200	(32.99) 1.299	14-56-2131	A-70400-0537
14	(33.02) 1.300	(35.53) 1.399	14-56-2141	A-70400-0538
15	(35.56) 1.400	(38.07) 1.499	14-56-2151	A-70400-0539
16	(38.01) 1.500	(40.61) 1.599	14-56-2161	A-70400-0540
17	(40.64) 1.600	(43.15) 1.699	14-56-2171	A-70400-0541
18	(43.18) 1.700	(45.69) 1.799	14-56-2181	A-70400-0542
19	(45.72) 1.800	(48.23) 1.899	14-56-2191	A-70400-0543
20	(48.26) 1.900	(50.77) 1.999	14-56-2201	A-70400-0544
21	(50.80) 2.000	(53.31) 2.099	14-56-2211	A-70400-0545
22	(53.34) 2.100	(55.85) 2.199	14-56-2221	A-70400-0546
23	(55.88) 2.200	(58.39) 2.299	14-56-2231	A-70400-0547
24	(58.42) 2.300	(60.93) 2.399	14-56-2241	A-70400-0548
25	(60.96) 2.400	(63.47) 2.499	14-56-2251	A-70400-0549

I.D. SLOT CODE TO WIRE GAUGE CHART	
I.D. SLOT CODE	WIRE GAUGE
A	24 AWG.

PLATING CODE (STRIPE ON CARRIER STRIP)	
PLATING	COLOR
15 GOLD	YELLOW

LTR.	REVISIONS	LTR.	REVISIONS
E	REVISED PER ECR NO. U82110 10-17-88 AAB	D	REVERSE PER ECR #U80110 2/3/88 MJM
E1	ADD CARRIER CHAMF ECR #UDT1998-0280 05/20/98 LMCGRATH	C	REDRAWN ON CAD ECR# 8842 5/8/86 W.Z.

DIMENSIONS SHOWN (METRIC) INCH	
UNLESS OTHERWISE SPECIFIED TOLERANCES: ANGULAR ± 1/2°	
5 PLACE ± .010	--- ± 0.25
2 PLACE ± .014	± 0.25
1 PLACE ---	± 0.35

▽ =	▼ =	REVISE ONLY ON CAD SYSTEM
TITLE ASSEMBLY, SL CONNECTOR (SINGLE ROW- (2.54)/.100 GRID)		
MOLEX INCORPORATED LISLE, ILL. 60532 U.S.A.		SHEET NO. DATE 10/09/84
PART NO. SDA-70400-0526-0549		DRWG. NO.
SEE CHART		
FILE NAME S70400A4		DRG. DIV. SIZE DA C

MFG, SH, REV.

70400