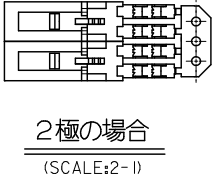
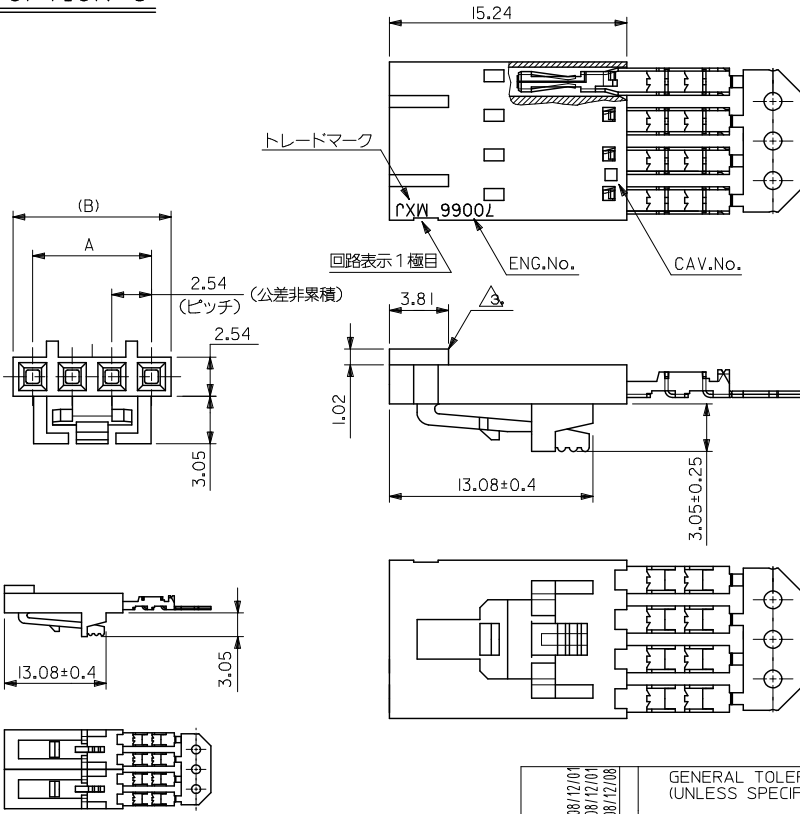


10 9 8 7 6 5 4 3 2 1

OPTION G



注記:

1. 材料
ハウジング: ガラス入りポリエステル UL 94V-0
ターミナル: 磷青銅
2. 仕上げ
接点部 : 金メッキ 0.38 μm MIN.
圧接部 : 錫メッキ 1.91 μm MIN.
下地メッキ: ニッケルメッキ 1.27 μm MIN.
- △3 極性リブは、2極及び3極の場合1箇所のみとする。
但し3極の場合のリブは、1極目と2極目の間とする。
4. 適合オスコネクター: 70107-****, 70018-****
5. 適合ヘッダー: 70389-****, 70391-****
6. ハウジングの色: 黒

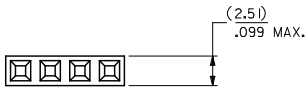
60.96	58.42	70400-0688	24
58.42	55.88	70400-0687	23
48.26	45.72	70400-0683	19
40.64	38.10	70400-0680	16
38.10	35.56	70400-0679	15
35.56	33.02	70400-0678	14
33.02	30.48	70400-0677	13
27.94	25.40	70400-0675	11
25.40	22.86	70400-0674	10
22.86	20.32	70400-0673	9
(B)	A	MATERIAL No.	極数

REVISED EEC NO: J2009-0453 DRAWN BY: DRW:YOSHIDAM CHECKED BY: CHYK:THARYAMA APPROVED BY: APPR:NIKIITA DATE: 2008/12/01 DATE: 2008/12/01 DATE: 2008/12/08	GENERAL TOLERANCES (UNLESS SPECIFIED)		DIMENSION STYLE MM ONLY		SCALE 4:1	DESIGN UNITS METRIC	THIRD ANGLE PROJECTION
	10 UNDER	±0.2	DRAWN BY T. FURUHATA	DATE '87/11/17	TITLE 2.54 SINGLE ROW ASSY FEMALE I.D.CONN OPTION G -LEAD FREE-		
	10 OVER 30 UNDER	±0.25	CHECKED BY M. SASAO	DATE	MOLEX INCORPORATED		
	30 OVER	±0.3	APPROVED BY S. YAMADA	DATE	DOCUMENT NO. SD-70400-010	SHEET NO. 1 OF 1	
ANGULAR ±3°		DRAFT WHERE APPLICABLE MUST REMAIN WITHIN DIMENSIONS		MATERIAL NO. SEE TABLE		SIZE A3	
THIS DRAWING CONTAINS INFORMATION THAT IS PROPRIETARY TO MOLEX INCORPORATED AND SHOULD NOT BE USED WITHOUT WRITTEN PERMISSION							

13 12 11 10 9 8 7 6 5 4 3 2 1

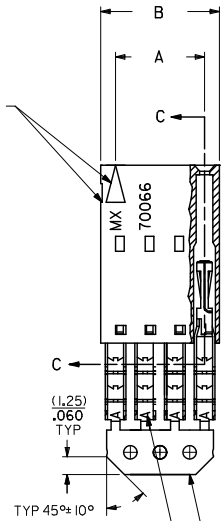
OPTION A

- NOTES:
- MATERIAL:
HOUSING: POLYESTER(FBT), GLASS FILLED, UL94 V-0,
COLOR: BLACK
TERMINAL: PHOSPHOR BRONZE
 - FINISH:
15 GOLD: 0.38 MICROMETERS/15 MICROINCHES MINIMUM GOLD IN
1.91 MICROMETERS/75 MICROINCHES MINIMUM TIN
OVER NICKEL UNDERPLATE OVERALL
 - TO BE USED WITH 24 AWG STRANDED WIRE WITH (1.35)/.053
DIAMETER MAXIMUM INSULATION
 - SEE TABLE FOR AVAILABLE CIRCUIT SIZES
 - STANDARD PACKAGING PER PK-70873-0001. OPTIONAL PACKAGING
MAY BE AVAILABLE. REQUEST CIRCUIT SIZES
 - PARTS STACKABLE END TO END ON (2.54)/.100 CENTERS
 - PRODUCT SPECIFICATION: PS-70400
 - SEE DRAWING SDA-70400-**** (SHEET 3) FOR OPTIONAL
HOUSING DETAILS
 - 4 CIRCUIT SHOWN
 - TO MATE WITH MOLEX 2.54/.100 CENTERLINE HEADERS
 - 2 CIRCUIT ASSEMBLIES SUPPLIED AS GROUPED PAIRS

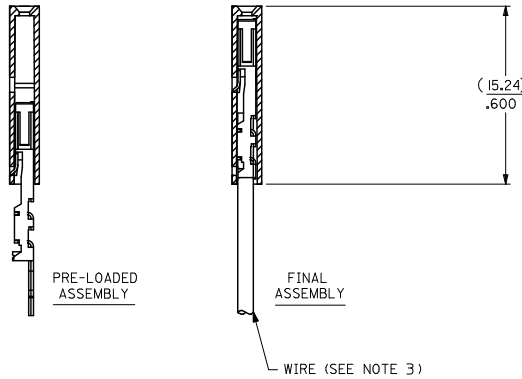


CKT. SIZE	A	B	EDP. NO.
2	(2.54) .100	(5.05) .199	I4-56-202I
3	(5.08) .200	(7.59) .299	I4-56-203I
4	(7.62) .300	(10.13) .399	I4-56-204I
5	(10.16) .400	(12.67) .499	I4-56-205I
6	(12.70) .500	(15.21) .599	I4-56-206I
7	(15.24) .600	(17.75) .699	I4-56-207I
8	(17.78) .700	(20.29) .799	I4-56-208I
9	(20.32) .800	(22.83) .899	I4-56-209I
10	(22.86) .900	(25.37) .999	I4-56-210I
11	(25.40) 1.000	(27.91) 1.099	I4-56-211I
12	(27.94) 1.100	(30.45) 1.199	I4-56-212I
13	(30.48) 1.200	(32.99) 1.299	I4-56-213I
14	(33.02) 1.300	(35.53) 1.399	I4-56-214I
15	(35.56) 1.400	(38.07) 1.499	I4-56-215I
16	(38.10) 1.500	(40.61) 1.599	I4-56-216I
17	(40.64) 1.600	(43.15) 1.699	I4-56-217I
18	(43.18) 1.700	(45.69) 1.799	I4-56-218I
19	(45.72) 1.800	(48.23) 1.899	I4-56-219I
20	(48.26) 1.900	(50.77) 1.999	I4-56-220I
21	(50.80) 2.000	(53.31) 2.099	I4-56-221I
22	(53.34) 2.100	(55.85) 2.199	I4-56-222I
23	(55.88) 2.200	(58.39) 2.299	I4-56-223I
24	(58.42) 2.300	(60.93) 2.399	I4-56-224I
25	(60.96) 2.400	(63.47) 2.499	I4-56-225I

CIRCUIT NO. I
SLOT OR ARROW



SECTION C-C



WIRE (SEE NOTE 3)

I.D. SLOT CODE TO WIRE GAUGE CHART	
I.D. SLOT CODE	WIRE GAUGE
A	24 AWG.

PLATING CODE (STRIPE ON CARRIER STRIP)	
PLATING	COLOR
I5 GOLD	YELLOW

REMOVE ENG. NO. EC NO. UEP2011-110 2010/10/19 DRW:MS BARRA CHK:DJORDAN 2010/10/19 APPR:SMILLER 2010/11/24	QUALITY SYMBOLS	GENERAL TOLERANCES (UNLESS SPECIFIED)	DIMENSION STYLE	SCALE	DESIGN UNITS	THIRD ANGLE PROJECTION	
	$\nabla = 0$ $\nabla = 0$ $\nabla = 0$	mm INCH 4 PLACES ± --- ± --- 3 PLACES ± --- ± .010 2 PLACES ± 0.25 ± .014 1 PLACE ± 0.35 ± --- ANGULAR ± 1/2°	MM/MIN	INCH	INCH	INCH	
	DESCRIPTION	DRAFT WHERE APPLICABLE MUST REMAIN WITHIN DIMENSIONS	SEE TABLE	DATE	DATE	DATE	TITLE ASSEMBLY, SL CONNECTOR SINGLE ROW 2.54/.100 GRID
	REV	SIZE	INCORPORATED AND SHOULD NOT BE USED WITHOUT WRITTEN PERMISSION	DATE	DATE	DATE	MOLEX INCORPORATED SDA-70400-0526-0549 SHEET NO. 1 OF 1

12 11 10 9 8 7 6 5 4 3 2 1