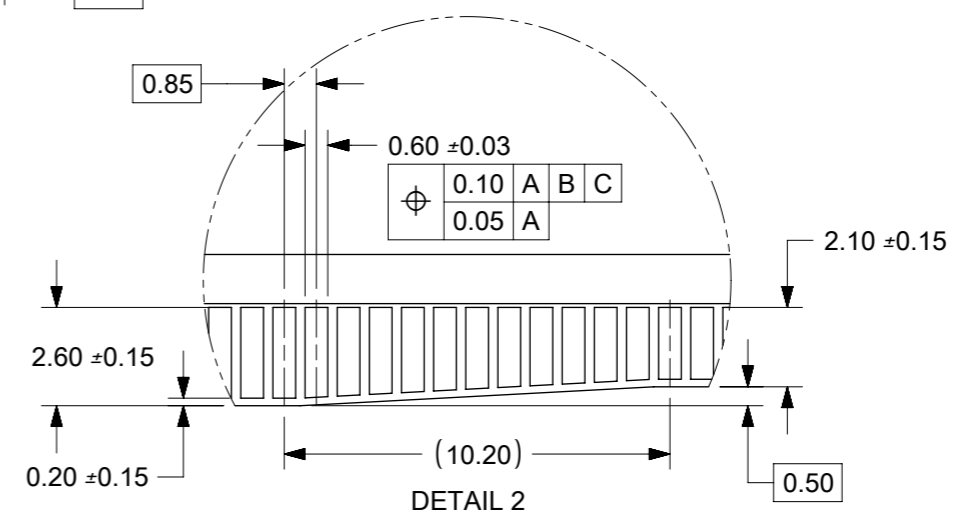
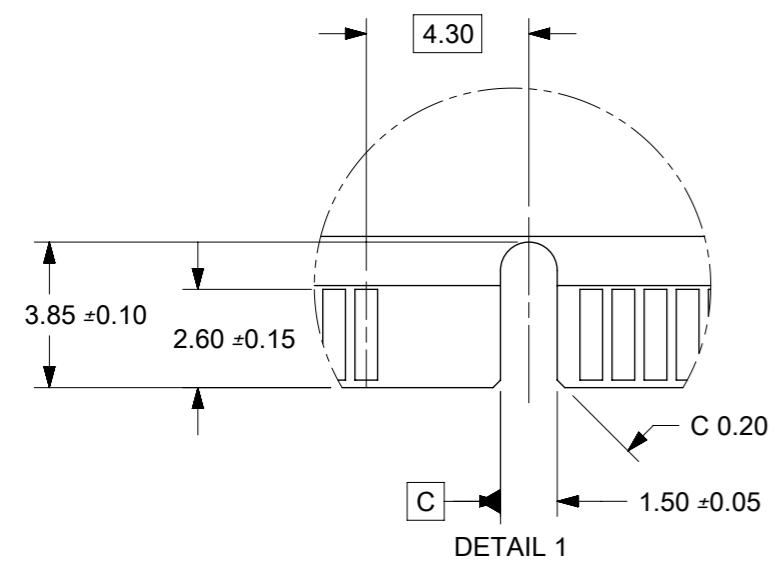
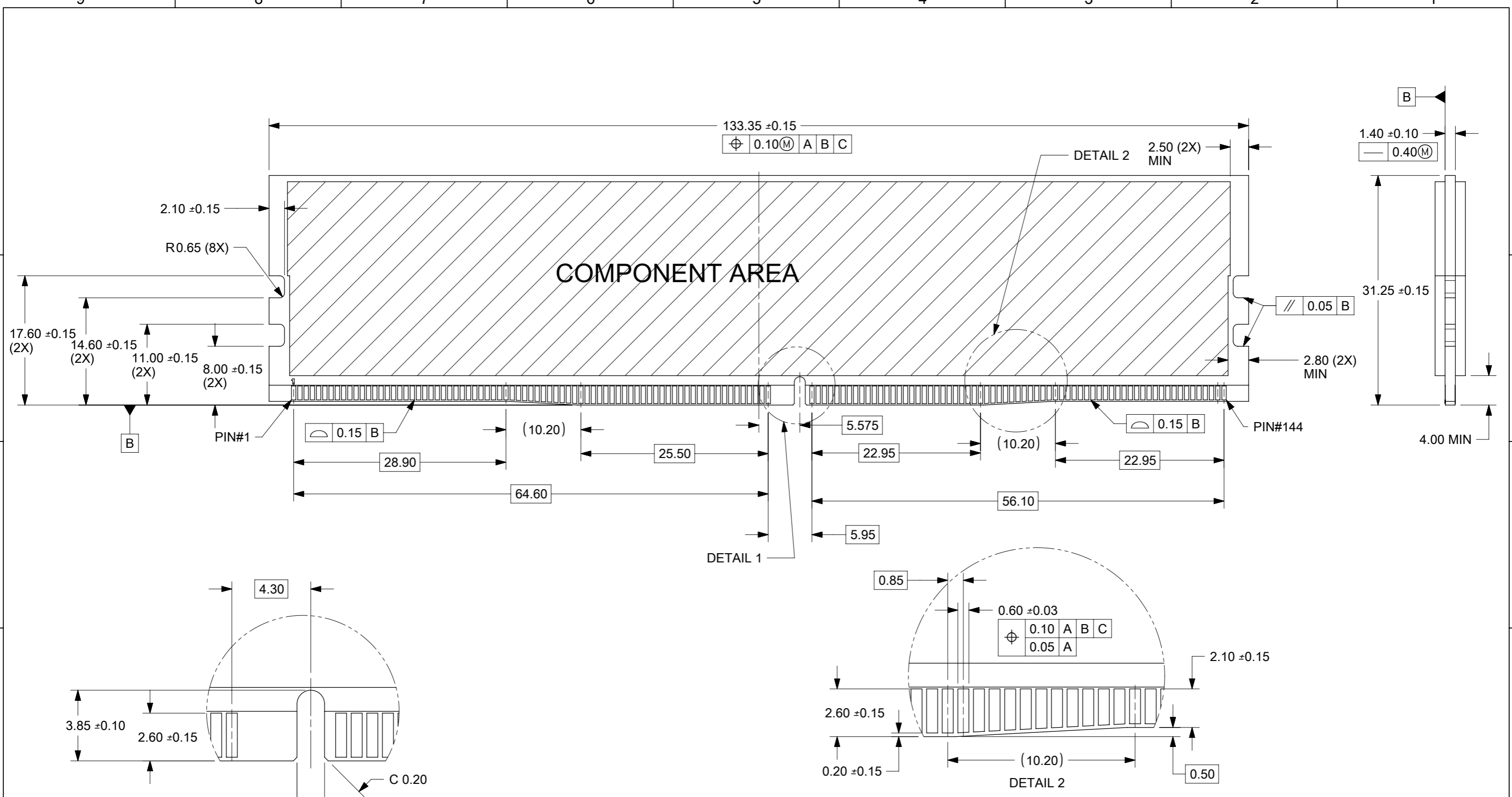


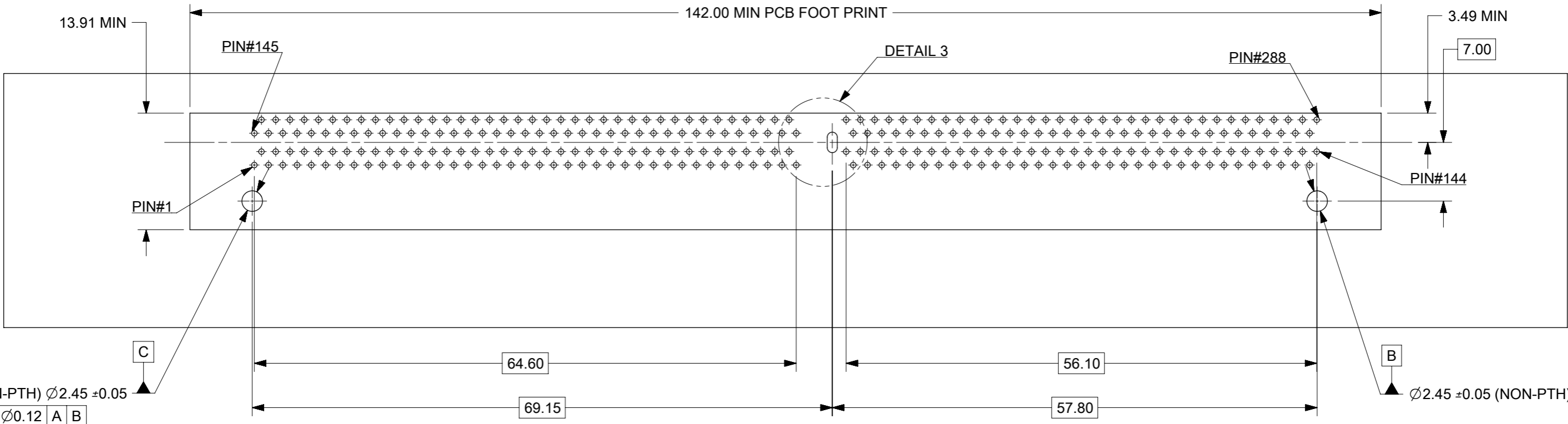
THIS DESIGN IS BASED ON DESIGN OBJECTIVES AND IS STRICTLY TENTATIVE. IT MAY CHANGE BASED ON RESULTS OF ADDITIONAL DESIGN REVIEWS & VERIFICATIONS.

- NOTES:
- MATERIAL : HOUSING - HALOGEN FREE HIGH TEMP POLYAMIDE, GLASS FILLED, UL94V-0, BLACK.
LATCH - HALOGEN FREE HIGH TEMP POLYAMIDE, GLASS FILLED, UL94V-0, BLACK.
TERMINAL : COPPER ALLOY.
FORKLOCK: COPPER ALLOY.
 - FINISHES - SEE TABLE ON SHEET 5.
 - PRODUCT SPECIFICATION : SEE TABLE ON SHEET 5.
 - PACKAGING SPECIFICATION: PRODUCT SHALL BE PACKED IN TRAY, SEE SHEET 5
 - CARD SLOT ACCEPTS 1.40±0.10MM MODULE THICKNESS (MEASURED OVER P.C. PADS).
 - MOLEX LOGO, DATE & PART NO. INDICATED ON HOUSING.

| | | | | | | | | | | | |
|---|-----|--------------|------------|--|--|-----------------|--|------------------------|--|------------------|--|
| THIS DRAWING CONTAINS INFORMATION THAT IS PROPRIETARY TO MOLEX ELECTRONIC TECHNOLOGIES, LLC AND SHOULD NOT BE USED WITHOUT WRITTEN PERMISSION | | | | | | | | | | | |
| QUALITY SYMBOLS | | AMD. DIM "Q" | | EC NO: 174096 | | DRWN: CCTEH | | CHK'D: CGTAN | | REV APPR: SHLENI | |
| FA | = 0 | 2018/03/09 | 2018/04/04 | GENERAL TOLERANCES (UNLESS SPECIFIED) | | DIMENSION UNITS | | SCALE | | MATERIAL NUMBER | |
| FE | = 0 | | | ANGULAR TOL ± 3.0 ° | | MM ONLY | | NTS | | DATE | |
| FB | = 0 | | | 4 PLACES ± | | CCTEH | | 2014/05/19 | | CUSTOMER | |
| FC | = 0 | | | 3 PLACES ± | | CHK'D BY | | DATE | | GENERAL MARKET | |
| FD | = 0 | | | 2 PLACES ± 0.25 | | CGTAN | | 2015/04/30 | | SERIES | |
| FE | = 0 | | | 1 PLACE ± | | APPR BY | | DATE | | 151080 | |
| FF | = 0 | | | 0 PLACES ± | | SHLENI | | 2015/05/13 | | SEE TABLE | |
| FG | = 0 | | | DRAFT WHERE APPLICABLE MUST REMAIN WITHIN DIMENSIONS | | DRAWING SIZE | | THIRD ANGLE PROJECTION | | DOCUMENT NUMBER | |
| FH | = 0 | | | | | A3 | | | | SD-151080-0001 | |
| FI | = 0 | | | | | | | | | DOC TYPE | |
| FJ | = 0 | | | | | | | | | PSD | |
| | | | | | | | | | | DOC PART | |
| | | | | | | | | | | 000 | |
| | | | | | | | | | | SHEET NUMBER | |
| | | | | | | | | | | 1 OF 5 | |

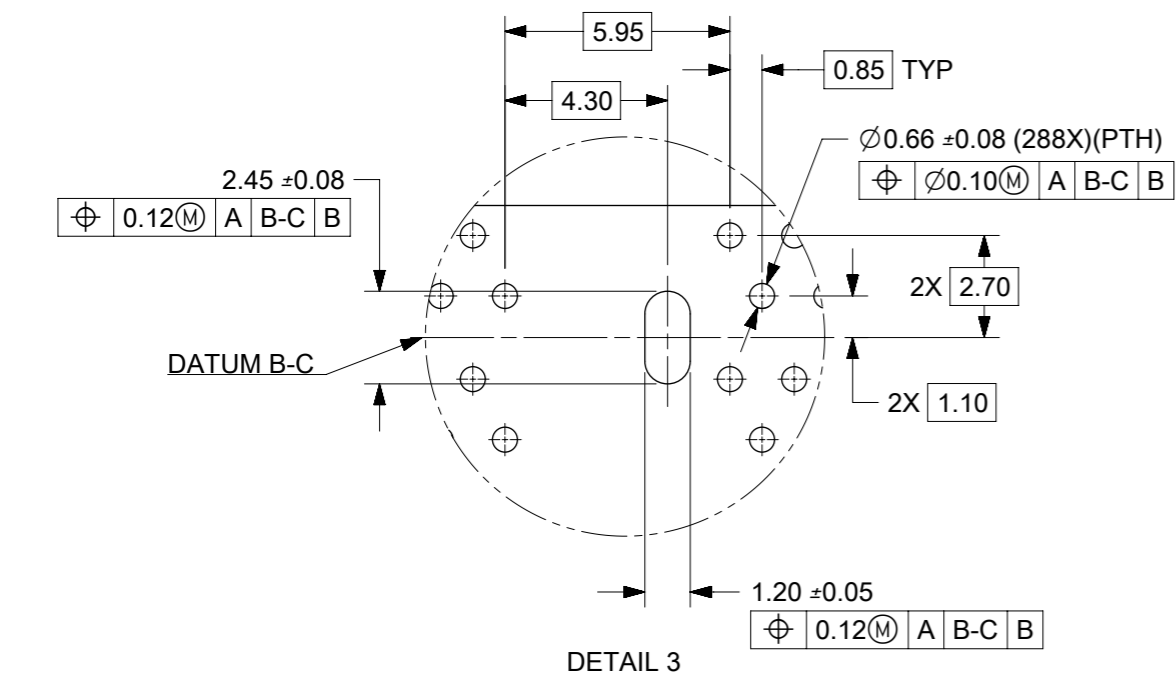


| | | | | | | | | | | |
|---|--------------|---------------|-------------|--------------|------------------|--|---|-----------------|------------|--------------|
| THIS DRAWING CONTAINS INFORMATION THAT IS PROPRIETARY TO MOLEX ELECTRONIC TECHNOLOGIES, LLC AND SHOULD NOT BE USED WITHOUT WRITTEN PERMISSION | | | | | | | | | | |
| QUALITY SYMBOLS | AMD. DIM "Q" | EC NO: 174096 | DRWN: CCTEH | CHK'D: CGTAN | REV APPR: SHLENI | GENERAL TOLERANCES (UNLESS SPECIFIED) | | DIMENSION UNITS | SCALE | |
| | | | | | | ANGULAR TOL ± 3.0 ° | | MM ONLY | NTS | |
| ▽A = 0 | | | | | | 4 PLACES ± | | DRWN BY | DATE | |
| ▽E = 0 | | | | | | 3 PLACES ± | | CCTEH | 2014/05/19 | |
| ▽F = 0 | | | | | | 2 PLACES ± 0.25 | | CHK'D BY | DATE | |
| ▽ = 0 | | | | | | 1 PLACE ± | | CGTAN | 2015/04/30 | |
| ▽C = 0 | | | | | | 0 PLACES ± | | APPR BY | DATE | |
| ⊗ = 0 | | | | | | DRAFT WHERE APPLICABLE MUST REMAIN WITHIN DIMENSIONS | | SHLENI | 2015/05/13 | |
| ■ = 0 | | | | | | DRAWING SIZE | THIRD ANGLE PROJECTION | | | |
| ▽ = 0 | | | | | | A3 | | | | |
| | | | | | | | molex [®] | | | |
| | | | | | | | DDR4 DIMM 0.85MM PITCH 25 DEG. 288CKTS T/H | | | |
| | | | | | | | PRODUCT CUSTOMER DRAWING | | | |
| RELEASE STATUS | | RELEASE DATE | | | | SERIES | MATERIAL NUMBER | CUSTOMER | | |
| | | | | | | 151080 | SEE TABLE | GENERAL MARKET | | |
| | | | | | | | DOCUMENT NUMBER | DOC TYPE | DOC PART | SHEET NUMBER |
| | | | | | | | SD-151080-0001 | PSD | 000 | 3 OF 5 |



(NON-PTH) $\varnothing 2.45 \pm 0.05$
 $\varnothing 0.12$ A B

$\varnothing 2.45 \pm 0.05$ (NON-PTH)



| | | | | | | | | | | |
|---|--------------|---------------|--------------|--------------|------------------|--|--|-----------------|------------------------|----------------|
| THIS DRAWING CONTAINS INFORMATION THAT IS PROPRIETARY TO MOLEX ELECTRONIC TECHNOLOGIES, LLC AND SHOULD NOT BE USED WITHOUT WRITTEN PERMISSION | | | | | | | | | | |
| QUALITY SYMBOLS | AMD. DIM "Q" | EC NO: 174096 | DRWN: CCTEH | CHK'D: CGTAN | REV APPR: SHLENI | GENERAL TOLERANCES (UNLESS SPECIFIED) | | DIMENSION UNITS | SCALE | |
| | | | | | | ANGULAR TOL $\pm 3.0^\circ$ | | MM ONLY | NTS | |
| $\nabla_A = 0$ | | | | | | 4 PLACES \pm | | DRWN BY | DATE | |
| $\nabla_E = 0$ | | | | | | 3 PLACES \pm | | CCTEH | 2014/05/19 | |
| $\nabla_F = 0$ | | | | | | 2 PLACES ± 0.25 | | CHK'D BY | DATE | |
| $\nabla = 0$ | | | | | | 1 PLACE \pm | | CGTAN | 2015/04/30 | |
| $\nabla_C = 0$ | | | | | | 0 PLACES \pm | | APPR BY | DATE | |
| $\nabla = 0$ | | | | | | | | SHLENI | 2015/05/13 | |
| $\nabla = 0$ | | | | | | | | DRAWING SIZE | THIRD ANGLE PROJECTION | |
| $\nabla = 0$ | | | | | | | | A3 | | |
| $\nabla = 0$ | | | | | | DRAFT WHERE APPLICABLE MUST REMAIN WITHIN DIMENSIONS | | | | |
| RELEASE STATUS | | | RELEASE DATE | | | SERIES | | MATERIAL NUMBER | | CUSTOMER |
| | | | | | | 151080 | | SEE TABLE | | GENERAL MARKET |
| | | | | | | DOCUMENT NUMBER | | DOC TYPE | DOC PART | SHEET NUMBER |
| | | | | | | SD-151080-0001 | | PSD | 000 | 4 OF 5 |

molex

DDR4 DIMM 0.85MM PITCH
25 DEG. 288CKTS T/H

PRODUCT CUSTOMER DRAWING

9 8 7 6 5 4 3 2 1

| PART NO. | VOLTAGE KEY | DIM "P" | DIM"Q" | RECOMMENDED PCB THICKNESS | PLATING OPTION | HOUSING COLOUR | LATCH COLOUR | PRODUCT SPECIFICATION | PACKAGING SPECIFICATION |
|-------------|---------------|---------|--------|---------------------------|---|----------------|--------------|-----------------------|-------------------------|
| 151080-0001 | CENTER (1.2V) | 3.56 | 4.83 | 2.54 | 0.76µM / 30 µInch MIN GOLD ON CONTACT 2.54µM / 100 µInch MIN PURE TIN ON SOLDER TAILS 1.27µM / 50 µInch MIN NICKEL UNDERPLATE | BLACK | BLACK | PS-151080-0001 | PK-151080-0001 |
| 151080-0101 | | 2.67 | 3.18 | 1.70~1.80 | | BLACK | BLACK | | |
| 151080-0102 | | | | | | BLACK | NATURAL | | |

E
D
C
B
A

E
D
C
B
A

| | | | | | | | | | | | | |
|---|--|--|--|-----------------------------------|---|------------------------------|----------------------------|-----------------------------------|-----------------|-----------------|------------------------|--|
| THIS DRAWING CONTAINS INFORMATION THAT IS PROPRIETARY TO MOLEX ELECTRONIC TECHNOLOGIES, LLC AND SHOULD NOT BE USED WITHOUT WRITTEN PERMISSION | | | | | | | | | | | | |
| QUALITY SYMBOLS | AMD. DIM "Q" EC NO: 174096 DRWN: CCTEH CHK'D: CGTAN REV APPR: SHLENI | GENERAL TOLERANCES (UNLESS SPECIFIED) ANGULAR TOL ± 3.0 ° | | DIMENSION UNITS MM ONLY | SCALE NTS | | | | | | | |
| | | 4 PLACES ± | DRWN BY CCTEH | DATE 2014/05/19 | DDR4 DIMM 0.85MM PITCH 25 DEG. 288CKTS T/H | | | | | | | |
| | | 3 PLACES ± | CHK'D BY CGTAN | DATE 2015/04/30 | | | | PRODUCT CUSTOMER DRAWING | | | | |
| | | 2 PLACES ± 0.25 | APPR BY SHLENI | DATE 2015/05/13 | SERIES 151080 | MATERIAL NUMBER SEE TABLE | CUSTOMER GENERAL MARKET | | | | | |
| | | 1 PLACE ± | DRAFT WHERE APPLICABLE MUST REMAIN WITHIN DIMENSIONS | | DRAWING SIZE A3 | THIRD ANGLE PROJECTION | | DOCUMENT NUMBER SD-151080-0001 | DOC TYPE PSD | DOC PART 000 | SHEET NUMBER 5 OF 5 | |
| | | 0 PLACES ± | | | | | | | | | | |
| | | □ = 0 | | | | | | | | | | |
| | | ■ = 0 | | | | | | | | | | |
| | | ▽ = 0 | | | | | | | | | | |
| | | ▽ = 0 | | | | | | | | | | |

| | |
|----------------|--------------|
| RELEASE STATUS | RELEASE DATE |
|----------------|--------------|

9 8 7 6 5 4 3 2 1

FORMAT: master-ib-prod-A3
REVISION: 0
DATE: 2015/12/14