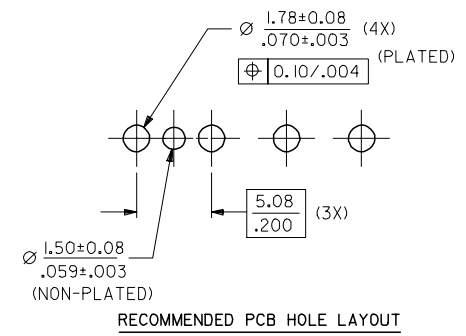
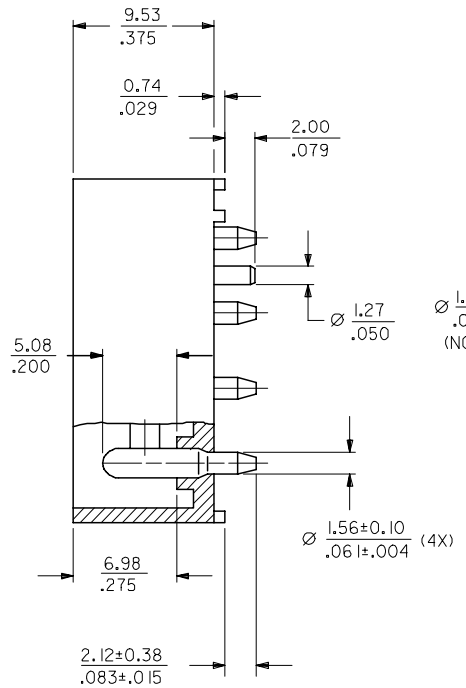
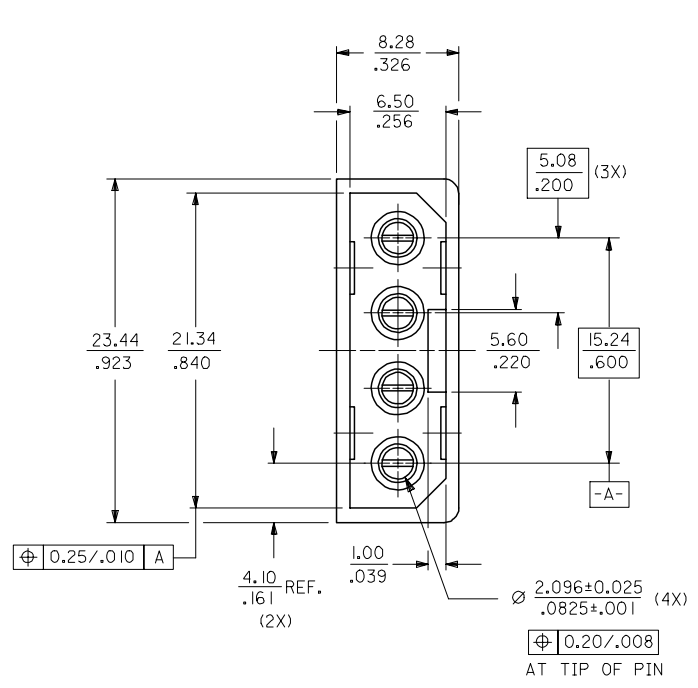


MAT'L NO.	ENG NO.
15-24-4742	A-8981-4V6-LF



- NOTES :
1. PLATING
POSTPLATE 0.0025/-.000100 MIN. TIN
OVER 0.00127/-.000050 MIN. NICKEL OVERALL.
 2. PART TO MATE WITH HOUSING 8981-4P2
AND TERMINAL 8980-3*.
 3. PRODUCT SPEC PS-8981-4V4/4R1-P APPLIES.
 4. MATERIAL:
HOUSING - PCT, GLASS FILLED, UL94V-0
COLOR BLACK
TERMINAL - PHOS BRONZE

OBS TIN/LEAD P/N EC NO: S2006-0763 DRWN:MLONG 2006/03/31 CHKD:WAGESHKN 2006/03/31 APPR:PTLIM 2006/04/03	QUALITY SYMBOLS ▽=0 ∇=0	GENERAL TOLERANCES (UNLESS SPECIFIED)		DIMENSION STYLE MM/IN	SCALE NTS	DESIGN UNITS METRIC	THIRD ANGLE PROJECTION			
		4 PLACES ± --- ± ---	3 PLACES ± --- ± .008	2 PLACES ± 0.20 ± ---	1 PLACE ± --- ± ---	ANGULAR ± 3 °	DRAWN BY SKTOH 1991/10/17	DATE 1991/10/17	TITLE POWER CONNECTOR, 4 CKTS VERTICAL MOUNT	
		DRAFT WHERE APPLICABLE MUST REMAIN WITHIN DIMENSIONS				APPROVED BY GWANG 1991/11/14	DATE 1991/11/14	MATERIAL NO. SD-8981-4V6		
		SEE TABLE				APPROVED BY RWONG 1991/11/14	DATE 1991/11/14	DOCUMENT NO. SD-8981-4V6		
SIZE A3				THIS DRAWING CONTAINS INFORMATION THAT IS PROPRIETARY TO MOLEX INCORPORATED AND SHOULD NOT BE USED WITHOUT WRITTEN PERMISSION				SHEET NO. 1 OF 1		