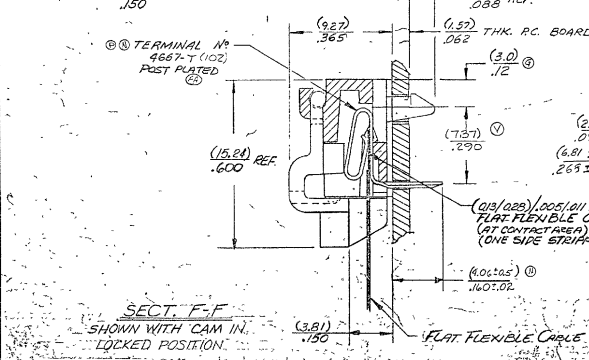
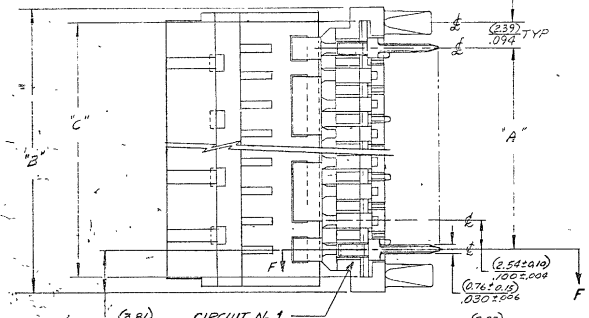
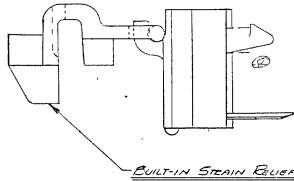
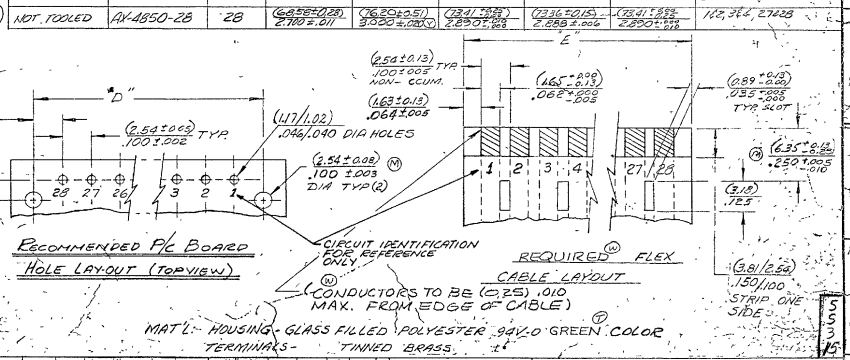


NOTES:
1) SEE PS-4850 FOR REFERENCE.



PART NO	ENG NO	NUMBER OF CIRCUITS	DIM. A	DIM. B	DIM. C	DIM. D	DIM. E	CABLE SLOTS FOR STRAIN RELIEF LOCATED BETWEEN @
15-25-4051	A-4850-5	5	(10.16±0.05) 400±0.06	(17.78±0.51) 700±0.02	(4.99±0.28)⑤ 590±0.05	(4.91±0.09) 588±0.03	(4.99±0.28) 590±0.05	1&2, 3&4
-406	-6	6	(12.20±0.05) 500±0.05	(20.32±0.02) 800±0.02	(7.63±0.02) 890±0.02	(7.47±0.08) 888±0.03	(7.63±0.02) 890±0.02	4&5
-4071	-7	7	(15.24±0.08) 600±0.07	(22.86±0.02) 900±0.02	(9.90±0.02) 1090±0.02	(9.90±0.02) 1088±0.03	(9.90±0.02) 1090±0.02	5&6
-4081	-8	8	(17.78±0.10) 700±0.07	(25.40±0.02) 1000±0.02	(12.11±0.02) 1190±0.02	(12.11±0.02) 1188±0.03	(12.11±0.02) 1190±0.02	3&4, 7&8
-4091	-9	9	(20.32±0.10) 800±0.07	(27.94±0.02) 1100±0.02	(14.55±0.02) 1290±0.02	(14.55±0.02) 1288±0.03	(14.55±0.02) 1290±0.02	8&9
-4101	-10	10	(22.86±0.10) 900±0.08	(30.50±0.02) 1200±0.02	(17.00±0.02) 1390±0.02	(17.00±0.02) 1388±0.03	(17.00±0.02) 1390±0.02	9&10
-4111	-11	11	(25.40±0.10) 1000±0.08	(33.02±0.02) 1300±0.02	(19.44±0.02) 1490±0.02	(19.44±0.02) 1488±0.03	(19.44±0.02) 1490±0.02	10&11
-4121	-12	12	(27.94±0.10) 1100±0.08	(35.56±0.02) 1400±0.02	(21.88±0.02) 1590±0.02	(21.88±0.02) 1588±0.03	(21.88±0.02) 1590±0.02	11&12
-4131	-13	13	(30.48±0.10) 1200±0.08	(38.10±0.02) 1500±0.02	(24.32±0.02) 1690±0.02	(24.32±0.02) 1688±0.03	(24.32±0.02) 1690±0.02	12&13
-4141	-14	14	(33.02±0.10) 1300±0.08	(40.64±0.02) 1600±0.02	(26.76±0.02) 1790±0.02	(26.76±0.02) 1788±0.03	(26.76±0.02) 1790±0.02	13&14
-4151	-15	15	(35.56±0.10) 1400±0.08	(43.18±0.02) 1700±0.02	(29.20±0.02) 1890±0.02	(29.20±0.02) 1888±0.03	(29.20±0.02) 1890±0.02	14&15
-4161	-16	16	(38.10±0.10) 1500±0.08	(45.72±0.02) 1800±0.02	(31.64±0.02) 1990±0.02	(31.64±0.02) 1988±0.03	(31.64±0.02) 1990±0.02	15&16
-4171	-17	17	(40.64±0.10) 1600±0.08	(48.26±0.02) 1900±0.02	(34.08±0.02) 2090±0.02	(34.08±0.02) 2088±0.03	(34.08±0.02) 2090±0.02	16&17
-4181	-18	18	(43.18±0.10) 1700±0.08	(50.80±0.02) 2000±0.02	(36.52±0.02) 2190±0.02	(36.52±0.02) 2188±0.03	(36.52±0.02) 2190±0.02	17&18
-4191	-19	19	(45.72±0.10) 1800±0.08	(53.34±0.02) 2100±0.02	(38.96±0.02) 2290±0.02	(38.96±0.02) 2288±0.03	(38.96±0.02) 2290±0.02	18&19
-4201	-20	20	(48.26±0.10) 1900±0.08	(55.88±0.02) 2200±0.02	(41.40±0.02) 2390±0.02	(41.40±0.02) 2388±0.03	(41.40±0.02) 2390±0.02	19&20
-4211	-21	21	(50.80±0.10) 2000±0.08	(58.42±0.02) 2300±0.02	(43.84±0.02) 2490±0.02	(43.84±0.02) 2488±0.03	(43.84±0.02) 2490±0.02	20&21
-4221	-22	22	(53.34±0.10) 2100±0.08	(60.96±0.02) 2400±0.02	(46.28±0.02) 2590±0.02	(46.28±0.02) 2588±0.03	(46.28±0.02) 2590±0.02	21&22
-4231	-23	23	(55.88±0.10) 2200±0.08	(63.50±0.02) 2500±0.02	(48.72±0.02) 2690±0.02	(48.72±0.02) 2688±0.03	(48.72±0.02) 2690±0.02	22&23
-4241	-24	24	(58.42±0.10) 2300±0.08	(66.04±0.02) 2600±0.02	(51.16±0.02) 2790±0.02	(51.16±0.02) 2788±0.03	(51.16±0.02) 2790±0.02	23&24
15-25-4251	A-4850-25	25	(60.96±0.10) 2400±0.11	(68.58±0.51) 2700±0.02	(53.60±0.36) 2590±0.05	(53.73±0.02) 2588±0.05	(53.60±0.36) 2590±0.05	24&25



REV	DATE	BY	CHKD	DESCRIPTION
1				INITIAL DESIGN
2				REVISED DIMENSIONS
3				REVISED DIMENSIONS
4				REVISED DIMENSIONS
5				REVISED DIMENSIONS
6				REVISED DIMENSIONS
7				REVISED DIMENSIONS
8				REVISED DIMENSIONS
9				REVISED DIMENSIONS
10				REVISED DIMENSIONS
11				REVISED DIMENSIONS
12				REVISED DIMENSIONS
13				REVISED DIMENSIONS

DIMENSION SHOWN IN METRIC INCH		TITLE	
TOLERANCE	METRIC	FLAT FLEXIBLE CABLE CONNECTOR	
FRAMES 1-10	± 0.25	LOW INSERTION FORCE 100 CTRS.	
FRAMES 11-20	± 0.25	WITH TRAJ PLATE LATER TERMINALS	
FRAMES 21-30	± 0.25	MOLEX INCORPORATED	
FRAMES 31-40	± 0.25	DIA. 1-23-76	
FRAMES 41-50	± 0.25	DIA. 1-23-76	
FRAMES 51-60	± 0.25	DIA. 1-23-76	
FRAMES 61-70	± 0.25	DIA. 1-23-76	
FRAMES 71-80	± 0.25	DIA. 1-23-76	
FRAMES 81-90	± 0.25	DIA. 1-23-76	
FRAMES 91-100	± 0.25	DIA. 1-23-76	
FRAMES 101-110	± 0.25	DIA. 1-23-76	
FRAMES 111-120	± 0.25	DIA. 1-23-76	
FRAMES 121-130	± 0.25	DIA. 1-23-76	
FRAMES 131-140	± 0.25	DIA. 1-23-76	
FRAMES 141-150	± 0.25	DIA. 1-23-76	
FRAMES 151-160	± 0.25	DIA. 1-23-76	
FRAMES 161-170	± 0.25	DIA. 1-23-76	
FRAMES 171-180	± 0.25	DIA. 1-23-76	
FRAMES 181-190	± 0.25	DIA. 1-23-76	
FRAMES 191-200	± 0.25	DIA. 1-23-76	
FRAMES 201-210	± 0.25	DIA. 1-23-76	
FRAMES 211-220	± 0.25	DIA. 1-23-76	
FRAMES 221-230	± 0.25	DIA. 1-23-76	
FRAMES 231-240	± 0.25	DIA. 1-23-76	
FRAMES 241-250	± 0.25	DIA. 1-23-76	
FRAMES 251-260	± 0.25	DIA. 1-23-76	
FRAMES 261-270	± 0.25	DIA. 1-23-76	
FRAMES 271-280	± 0.25	DIA. 1-23-76	
FRAMES 281-290	± 0.25	DIA. 1-23-76	
FRAMES 291-300	± 0.25	DIA. 1-23-76	
FRAMES 301-310	± 0.25	DIA. 1-23-76	
FRAMES 311-320	± 0.25	DIA. 1-23-76	
FRAMES 321-330	± 0.25	DIA. 1-23-76	
FRAMES 331-340	± 0.25	DIA. 1-23-76	
FRAMES 341-350	± 0.25	DIA. 1-23-76	
FRAMES 351-360	± 0.25	DIA. 1-23-76	
FRAMES 361-370	± 0.25	DIA. 1-23-76	
FRAMES 371-380	± 0.25	DIA. 1-23-76	
FRAMES 381-390	± 0.25	DIA. 1-23-76	
FRAMES 391-400	± 0.25	DIA. 1-23-76	
FRAMES 401-410	± 0.25	DIA. 1-23-76	
FRAMES 411-420	± 0.25	DIA. 1-23-76	
FRAMES 421-430	± 0.25	DIA. 1-23-76	
FRAMES 431-440	± 0.25	DIA. 1-23-76	
FRAMES 441-450	± 0.25	DIA. 1-23-76	
FRAMES 451-460	± 0.25	DIA. 1-23-76	
FRAMES 461-470	± 0.25	DIA. 1-23-76	
FRAMES 471-480	± 0.25	DIA. 1-23-76	
FRAMES 481-490	± 0.25	DIA. 1-23-76	
FRAMES 491-500	± 0.25	DIA. 1-23-76	
FRAMES 501-510	± 0.25	DIA. 1-23-76	
FRAMES 511-520	± 0.25	DIA. 1-23-76	
FRAMES 521-530	± 0.25	DIA. 1-23-76	
FRAMES 531-540	± 0.25	DIA. 1-23-76	
FRAMES 541-550	± 0.25	DIA. 1-23-76	
FRAMES 551-560	± 0.25	DIA. 1-23-76	
FRAMES 561-570	± 0.25	DIA. 1-23-76	
FRAMES 571-580	± 0.25	DIA. 1-23-76	
FRAMES 581-590	± 0.25	DIA. 1-23-76	
FRAMES 591-600	± 0.25	DIA. 1-23-76	
FRAMES 601-610	± 0.25	DIA. 1-23-76	
FRAMES 611-620	± 0.25	DIA. 1-23-76	
FRAMES 621-630	± 0.25	DIA. 1-23-76	
FRAMES 631-640	± 0.25	DIA. 1-23-76	
FRAMES 641-650	± 0.25	DIA. 1-23-76	
FRAMES 651-660	± 0.25	DIA. 1-23-76	
FRAMES 661-670	± 0.25	DIA. 1-23-76	
FRAMES 671-680	± 0.25	DIA. 1-23-76	
FRAMES 681-690	± 0.25	DIA. 1-23-76	
FRAMES 691-700	± 0.25	DIA. 1-23-76	
FRAMES 701-710	± 0.25	DIA. 1-23-76	
FRAMES 711-720	± 0.25	DIA. 1-23-76	
FRAMES 721-730	± 0.25	DIA. 1-23-76	
FRAMES 731-740	± 0.25	DIA. 1-23-76	
FRAMES 741-750	± 0.25	DIA. 1-23-76	
FRAMES 751-760	± 0.25	DIA. 1-23-76	
FRAMES 761-770	± 0.25	DIA. 1-23-76	
FRAMES 771-780	± 0.25	DIA. 1-23-76	
FRAMES 781-790	± 0.25	DIA. 1-23-76	
FRAMES 791-800	± 0.25	DIA. 1-23-76	
FRAMES 801-810	± 0.25	DIA. 1-23-76	
FRAMES 811-820	± 0.25	DIA. 1-23-76	
FRAMES 821-830	± 0.25	DIA. 1-23-76	
FRAMES 831-840	± 0.25	DIA. 1-23-76	
FRAMES 841-850	± 0.25	DIA. 1-23-76	
FRAMES 851-860	± 0.25	DIA. 1-23-76	
FRAMES 861-870	± 0.25	DIA. 1-23-76	
FRAMES 871-880	± 0.25	DIA. 1-23-76	
FRAMES 881-890	± 0.25	DIA. 1-23-76	
FRAMES 891-900	± 0.25	DIA. 1-23-76	
FRAMES 901-910	± 0.25	DIA. 1-23-76	
FRAMES 911-920	± 0.25	DIA. 1-23-76	
FRAMES 921-930	± 0.25	DIA. 1-23-76	
FRAMES 931-940	± 0.25	DIA. 1-23-76	
FRAMES 941-950	± 0.25	DIA. 1-23-76	
FRAMES 951-960	± 0.25	DIA. 1-23-76	
FRAMES 961-970	± 0.25	DIA. 1-23-76	
FRAMES 971-980	± 0.25	DIA. 1-23-76	
FRAMES 981-990	± 0.25	DIA. 1-23-76	
FRAMES 991-1000	± 0.25	DIA. 1-23-76	