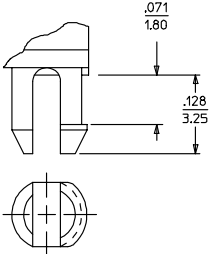
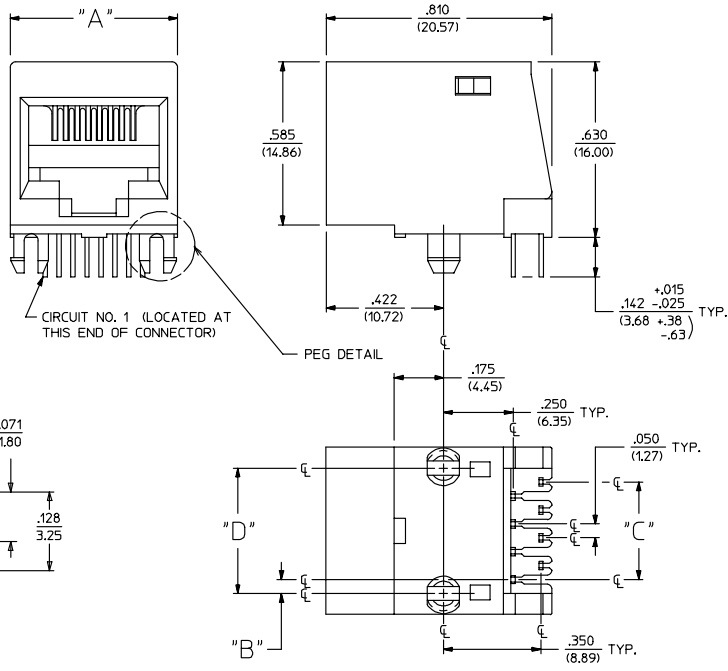


NOTES:

- 1) MATERIALS:
HOUSING: GLASS FILLED POLYESTER, UL94 V-0, COLOR: BLACK
TERMINALS: PHOSPHOR BRONZE
- 2) FINISH:
TERMINALS:
(A) SELECT GOLD IN CONTACT AREA: 50 MICROINCHES (1.27 MICROMETERS) MIN.
*SELECT TIN IN PC TAIL AREA: 100 MICROINCHES (2.54 MICROMETERS) MIN.
WITH OVERALL NICKEL UNDERPLATE: 50 MICROINCHES (1.27 MICROMETERS) MIN.
(B) SELECT GOLD IN CONTACT AREA: 30 MICROINCHES (0.76 MICROMETERS) MIN.
*SELECT TIN IN PC TAIL AREA: 100 MICROINCHES (2.54 MICROMETERS) MIN.
WITH OVERALL NICKEL UNDERPLATE: 50 MICROINCHES (1.27 MICROMETERS) MIN.
*THE PRIMARY SHIPPING CARTON WILL BE LABELED 'COMPLIANT TO ROHS'
DIRECTIVE 2002/95/EC AND ELV ANNEX II OF DIRECTIVE 2000/53/EC.'
CARTONS WITHOUT THIS LABEL MAY CONTAIN PRODUCT WITH TIN-LEAD
IN THE PC TAIL AREA.
- 3) ALL JACKS MUST MEET THE REQUIREMENTS OF MOLEX SPECIFICATION #PS-41314.
- 4) PACKAGING: THERMOFORMED TRAYS PER PK-41369-004.
- 5) JACKS CONFORM TO AND ACCEPT PLUGS WHICH CONFORM TO FCC REGULATIONS, PART 68.5.
- 6) JACKS ARE TO BE USED WITH .062(1.57) THICK PRINTED CIRCUIT BOARDS.
- 7) SEE SHEET 3 FOR RECOMMENDED PANEL CUT-OUT AND BOARD LAYOUT DIMENSIONS.
- 8) ALL UNTOLERANCED DIMENSIONS ARE SHOWN FOR REFERENCE ONLY.



PEG DETAIL
SCALE: 8:1

SIZE 8 MODULAR JACK HOUSING LOADED WITH 8 TERMINALS IS SHOWN ABOVE

8	2	.600 (15.24)	.200 (5.08)	.050 (1.27)	.450 (11.43)
8	4	.600 (15.24)	.150 (3.81)	.150 (3.81)	.450 (11.43)
8	6	.600 (15.24)	.100 (2.54)	.250 (6.35)	.450 (11.43)
8	8	.600 (15.24)	.050 (1.27)	.350 (8.89)	.450 (11.43)
6	2	.520 (13.21)	.175 (4.45)	.050 (1.27)	.400 (10.16)
6	4	.520 (13.21)	.125 (3.18)	.150 (3.81)	.400 (10.16)
6	6	.520 (13.21)	.075 (1.91)	.250 (6.35)	.400 (10.16)
4	2	.440 (11.18)	.125 (3.18)	.050 (1.27)	.300 (7.62)
4	4	.440 (11.18)	.075 (1.91)	.150 (3.81)	.300 (7.62)

HOUSING SIZE	CIRCUIT SIZE	DIM. 'A'	DIM. 'B'	DIM. 'C'	DIM. 'D'
--------------	--------------	----------	----------	----------	----------

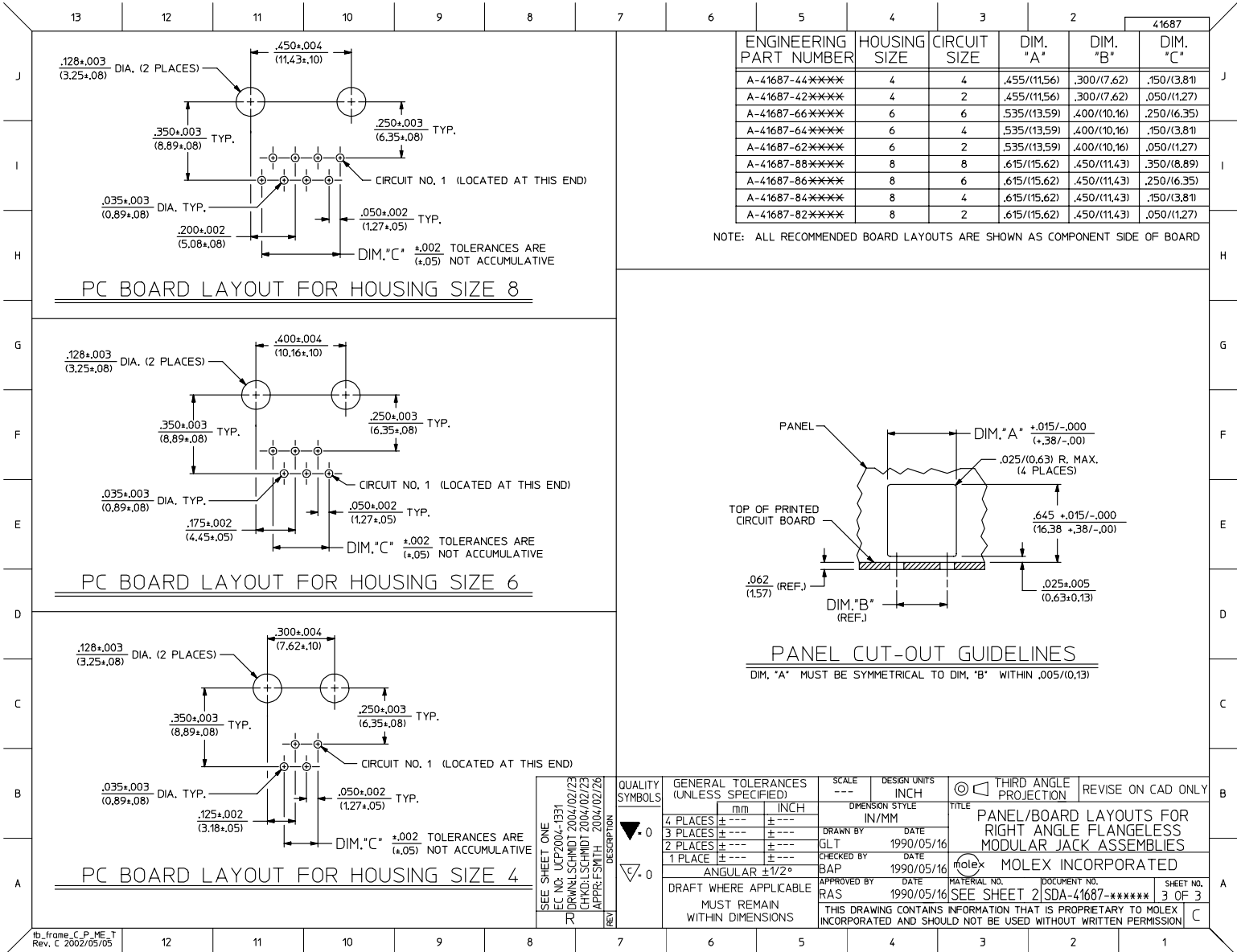
2006/06/27
REMOVE FILM/WRAP PAPER
EC NO. UCP2006-2453
DRAWN:PRODDER 2006/06/14
CHKD:JRELL
APPR:FSMITH

QUALITY SYMBOLS	GENERAL TOLERANCES (UNLESS SPECIFIED)	SCALE 4:1	DESIGN UNITS INCH	THIRD ANGLE PROJECTION	REVISE ON CAD ONLY
4 PLACES ± .005	mm INCH	DIMENSION STYLE IN/MM			
3 PLACES ± .005		DRAWN BY DATE			
2 PLACES ± .005		GLT 1990/05/16			
1 PLACE ± .005		CHECKED BY DATE			
	ANGULAR ±1/2°	BAP 1990/05/16			
	DRAFT WHERE APPLICABLE	APPROVED BY DATE			
	MUST REMAIN WITHIN DIMENSIONS	RAS 1990/05/16			
		MATERIAL NO. DOCUMENT NO.			
		SEE SHEET 2 SDA-41687-*****			
		SHEET NO. 1 OF 3			
		THIS DRAWING CONTAINS INFORMATION THAT IS PROPRIETARY TO MOLEX INCORPORATED AND SHOULD NOT BE USED WITHOUT WRITTEN PERMISSION			

3	R
2	R1
1	R1
SH	REV

	13	12	11	10	9	8	7	6	5	4	3	2	41687
	ENGINEERING PART NUMBER	E.D.P. NUMBER	HOUSING SIZE	CIRCUIT SIZE	PLATING OPTION	PACKAGING OPTION							
J	A-41687-44ABAA	015-43-8544	4	4	A	TRAY PACK							
	A-41687-42ABAA	015-43-8541	4	2	A	TRAY PACK							
	A-41687-66ABAA	015-43-8566	6	6	A	TRAY PACK							
	A-41687-64ABAA	015-43-8564	6	4	A	TRAY PACK							
	A-41687-62ABAA	015-43-8561	6	2	A	TRAY PACK							
	A-41687-88ABAA	015-43-8588	8	8	A	TRAY PACK							
I	A-41687-88BBAA	015-43-8589	8	8	B	TRAY PACK							
	A-41687-86ABAA	015-43-8586	8	6	A	TRAY PACK							
	A-41687-84ABAA	015-43-8584	8	4	A	TRAY PACK							
	A-41687-82ABAA	015-43-8590	8	2	A	TRAY PACK							
	<u>SEE SHEET 1 FOR PART DESCRIPTIONS</u>												
H													
G													
F													
E													
D													
C													
B													
A													
	12	11	10	9	8	7	6	5	4	3	2	1	

SEE SHEET ONE EC NO. UCP2006-2453 DRWN: PRODDER 2006/06/14 CHKD: J.BELL 2006/06/27 APPR: F.SMITH 2006/06/29	QUALITY SYMBOLS	GENERAL TOLERANCES (UNLESS SPECIFIED)	SCALE ---	DESIGN UNITS INCH	THIRD ANGLE PROJECTION	REVISE ON CAD ONLY															
	▽-0	<table border="1"> <tr> <th></th> <th>mm</th> <th>INCH</th> </tr> <tr> <td>4 PLACES</td> <td>±.0005</td> <td>±.0002</td> </tr> <tr> <td>3 PLACES</td> <td>±.0008</td> <td>±.0003</td> </tr> <tr> <td>2 PLACES</td> <td>±.0015</td> <td>±.0005</td> </tr> <tr> <td>1 PLACE</td> <td>±.0030</td> <td>±.0010</td> </tr> </table>		mm	INCH	4 PLACES	±.0005	±.0002	3 PLACES	±.0008	±.0003	2 PLACES	±.0015	±.0005	1 PLACE	±.0030	±.0010	DIMENSION STYLE IN/MM	TITLE	RIGHT ANGLE FLANGELESS MODULAR JACK ASSEMBLY	
		mm	INCH																		
	4 PLACES	±.0005	±.0002																		
3 PLACES	±.0008	±.0003																			
2 PLACES	±.0015	±.0005																			
1 PLACE	±.0030	±.0010																			
▽.0	ANGULAR ±1/2°	DRAFT WHERE APPLICABLE	DRAWN BY DATE	MOLEX INCORPORATED																	
REV		MUST REMAIN WITHIN DIMENSIONS	GLT 1990/05/16	CHECKED BY DATE	SEE CHART SDA-41687-***** 2 OF 3																
			BAP 1990/05/16	APPROVED BY DATE	THIS DRAWING CONTAINS INFORMATION THAT IS PROPRIETARY TO MOLEX INCORPORATED AND SHOULD NOT BE USED WITHOUT WRITTEN PERMISSION																
			RAS 1990/05/16	MATERIAL NO. DOCUMENT NO.	SEE CHART SDA-41687-***** 2 OF 3																



ENGINEERING PART NUMBER	HOUSING SIZE	CIRCUIT SIZE	DIM. "A"	DIM. "B"	DIM. "C"
A-41687-44XXXX	4	4	.455/(11.56)	.300/(7.62)	.150/(3.81)
A-41687-42XXXX	4	2	.455/(11.56)	.300/(7.62)	.050/(1.27)
A-41687-66XXXX	6	6	.535/(13.59)	.400/(10.16)	.250/(6.35)
A-41687-64XXXX	6	4	.535/(13.59)	.400/(10.16)	.150/(3.81)
A-41687-62XXXX	6	2	.535/(13.59)	.400/(10.16)	.050/(1.27)
A-41687-88XXXX	8	8	.615/(15.62)	.450/(11.43)	.350/(8.89)
A-41687-86XXXX	8	6	.615/(15.62)	.450/(11.43)	.250/(6.35)
A-41687-84XXXX	8	4	.615/(15.62)	.450/(11.43)	.150/(3.81)
A-41687-82XXXX	8	2	.615/(15.62)	.450/(11.43)	.050/(1.27)

NOTE: ALL RECOMMENDED BOARD LAYOUTS ARE SHOWN AS COMPONENT SIDE OF BOARD

SEE SHEET ONE EC NO. UCP2004-1931 DRAWN: SCHMIDT 2004/02/23 CHKD: SCHMIDT 2004/02/23 APPR: F SMITH 2004/02/26	QUALITY SYMBOLS 0 0	GENERAL TOLERANCES (UNLESS SPECIFIED) 4 PLACES ± --- ± --- 3 PLACES ± --- ± --- 2 PLACES ± --- ± --- 1 PLACE ± --- ± --- ANGULAR ±1/2°	SCALE --- DESIGN UNITS INCH DIMENSION STYLE IN/MM DRAWN BY I DATE 1990/05/16 GLT CHECKED BY BAP DATE 1990/05/16	THIRD ANGLE PROJECTION REVISE ON CAD ONLY TITLE PANEL/BOARD LAYOUTS FOR RIGHT ANGLE FLANGELESS MODULAR JACK ASSEMBLIES MOLEX MOLEX INCORPORATED MATERIAL NO. SEE SHEET 2 DOCUMENT NO. SDA-41687-***** SHEET NO. 3 OF 3
	DRAFT WHERE APPLICABLE MUST REMAIN WITHIN DIMENSIONS		APPROVED BY RAS DATE 1990/05/16 THIS DRAWING CONTAINS INFORMATION THAT IS PROPRIETARY TO MOLEX INCORPORATED AND SHOULD NOT BE USED WITHOUT WRITTEN PERMISSION	