

## FEATURES AND SPECIFICATIONS

## Features and Benefits

- Zero insertion force contacts improve socket and module contact life and provide for fast on-line assembly
- Guaranteed 2 points of contact per readout with standard JEDEC module
- Anti-overstress latch feature provides extra protection during module removal
- Polarization posts provide orientation for proper loading of socket into printed circuit board
- Polarization rib properly orients module to socket
- EIA standard dimensions

## Reference Information

Product Specification: PS-78954  
 Packaging: Tray  
 UL File No.: E29179  
 CSA File No.: LR19980  
 Mates With: JEDEC modules  
 Designed In: Inches

## Electrical

Voltage: 250V  
 Current: 1.0A  
 Contact Resistance: 30mΩ max.  
 Dielectric Withstanding Voltage: 1000V AC  
 Insulation Resistance: 5000 MΩ min.  
 Capacitance: 2.5 picofarads max.

## Mechanical

Normal Force: 150g average  
 Durability: 25 cycles

## Physical

Housing: Black LCP, UL 94V-0  
 Latch: Stainless Steel  
 Contact: Phosphor Bronze Alloy  
 Plating: See Table  
 Temperature: -40 to +85°C

# molex® 1.27mm (.050") Pitch

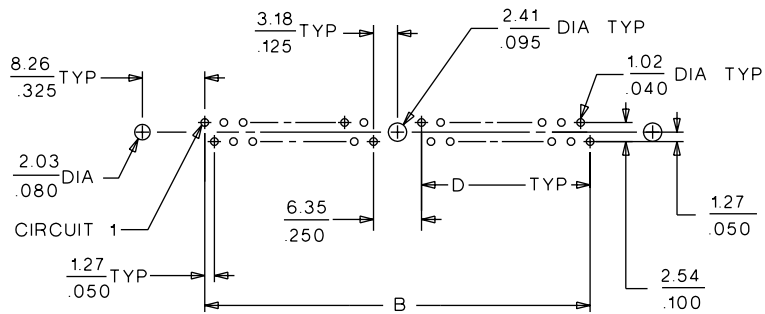
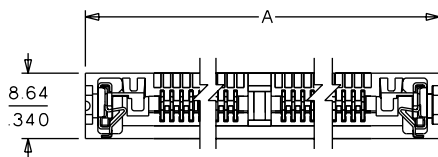
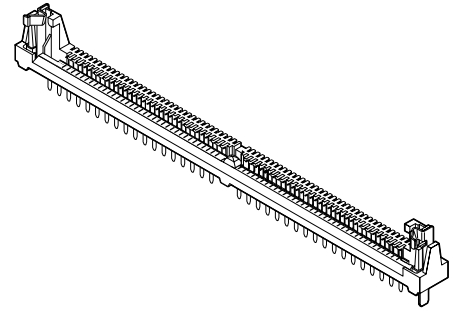
## SIMM Classic

## SIMM Socket

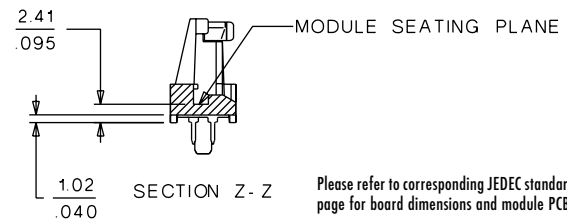
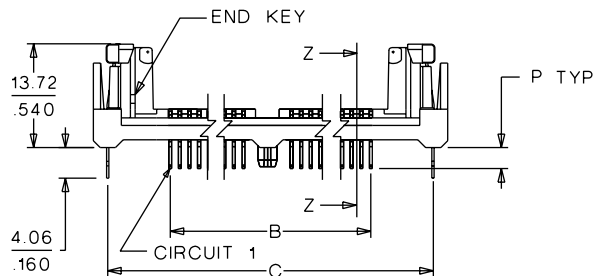
78962

### Left Polarization, Vertical

### Single Row, Metal Latch



PCB LAYOUT: COMPONENT SIDE



Please refer to corresponding JEDEC standard MO-116 page for board dimensions and module PCB layout

## ORDERING INFORMATION AND DIMENSIONS

Circuits	Order No. Tin Plate		Order No. Gold Plate		Dimension				
	With Center Post	Without Center Post	With Center Post	Without Center Post	A	B	C	D	P
40		15-82-0798			74.90 (2.950)	54.60 (2.150)	71.10 (2.800)	24.13 (.950)	2.79 (.110)
64	15-82-1104		• 15-82-0739		105.40 (4.150)	85.10 (3.350)	101.60 (4.000)	39.37 (1.550)	2.79 (.110)
64	• 15-82-1171				105.40 (4.150)	85.10 (3.350)	101.60 (4.000)	39.37 (1.550)	3.18 (.125)
68	• 15-82-1105		• 15-82-1190		110.50 (4.350)	90.20 (3.550)	106.70 (4.200)	41.91 (1.650)	2.79 (.110)
68			15-82-1144		110.50 (4.350)	90.20 (3.550)	106.70 (4.200)	41.91 (1.650)	3.18 (.125)
72	• 15-82-0775		• 15-82-0762		115.60 (4.550)	95.30 (3.750)	111.80 (4.400)	44.45 (1.750)	2.79 (.110)
72	• 15-82-1106				115.60 (4.550)	95.30 (3.750)	111.80 (4.400)	44.45 (1.750)	3.18 (.125)
80	• 15-82-1117		• 15-82-0780		125.70 (4.950)	105.40 (4.150)	121.90 (4.800)	49.53 (1.950)	2.79 (.110)
80			• 15-82-1115		125.70 (4.950)	105.40 (4.150)	121.90 (4.800)	49.53 (1.950)	3.18 (.125)
100			• 15-82-1194		151.10 (5.950)	130.80 (5.150)	147.30 (5.800)	62.23 (2.450)	2.79 (.110)

• US Standard Product, available through Molex franchised distributors

Plating: Post plate 200μ" min. Tin/Lead over 50μ" min. Nickel overall or post plate 30μ" min. Gold on contact area and 150μ" min. Tin/Lead on solder tails, all over Nickel

Call Molex for information on nonlisted order numbers