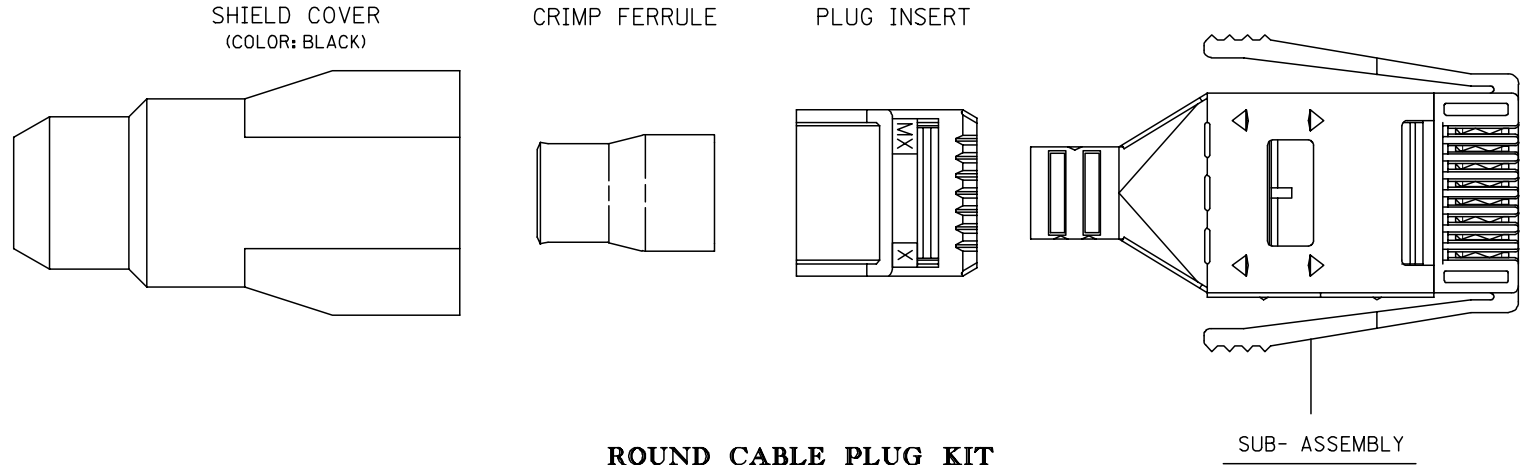


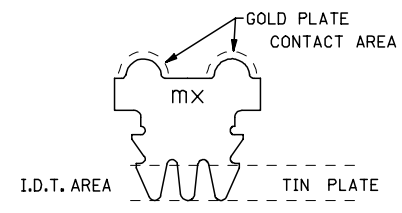
NON-KEYED OPTION MS-71310-0/3***		KEYING OPTION "1" MS-71310-1/4***		KEYING OPTION "2" MS-71310-2/5***		HSG. SIZE	CKT SIZE	DIM. "A"		DIM. "B"		DIM. "C"	
E.D.P. NUMBER	ENG. NUMBER	E.D.P. NUMBER	ENG. NUMBER	E.D.P. NUMBER	ENG. NUMBER			MM	IN.	MM	IN.	MM	IN.
015-83-0504	MS-71310-0004	015-83-0534	MS-71310-1004	015-83-0554	MS-71310-2004	4	4	9,30	.366	12,07	.475	17,22	.678
015-83-0506	MS-71310-0006	015-83-0536	MS-71310-1006	015-83-0556	MS-71310-2006	6	6	11,84	.466	14,61	.575	19,76	.778
015-83-0508	MS-71310-0008	015-83-0538	MS-71310-1008	015-83-0558	MS-71310-2008	8	8	14,38	.566	17,15	.675	22,30	.878
015-83-0516	MS-71310-0016	015-83-0546	MS-71310-1016	015-83-0566	MS-71310-2016	16	16	24,54	.966	27,31	1,075	32,46	1,278



ROUND CABLE PLUG KIT

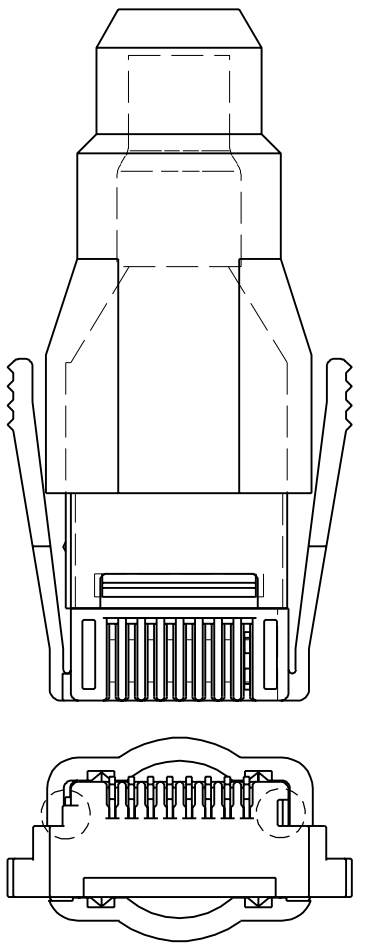
NOTES:

- FOR ILLUSTRATION PURPOSES 8 CIRCUIT SHOWN.
- REFER TO PK-70873-0053 FOR STANDARD PACKAGING.
- MUST CONFORM TO AS-71310 AND PS-71350-A.
- MATERIAL:**
 - PLUG HOUSING: POLYCARBONATE ALLOY; COLOR: CLEAR
 - PLUG SHIELD: BRASS WITH 100 MICROINCH TIN PLATE OVER 50 MICROINCH NICKEL. (MOLEX ES-88 CODE I54)
 - CONTACTS: PHOSPHOR BRONZE, 50 MICRO-INCH GOLD SELECTIVE PLATE IN THE CONTACT AREA, 50 MICRO-INCH TIN SELECTIVE PLATE IN THE IDT AREA, BOTH OVER 50 MICRO-INCH NICKEL UNDERPLATE. (MOLEX ES-88 CODE 575).
 - PLUG INSERT: POLYCARBONATE ALLOY; COLOR: CLEAR.
 - CRIMP FERRULE: COPPER WITH 100 MICROINCHES OF BRIGHT TIN PLATE OVER 50 MICROINCHES OF NICKEL UNDERPLATE. (MOLEX SPEC ES-88 CODE I54)
 - SHIELD COVER: POLYESTER, UL 94V-0, COLOR:BLACK

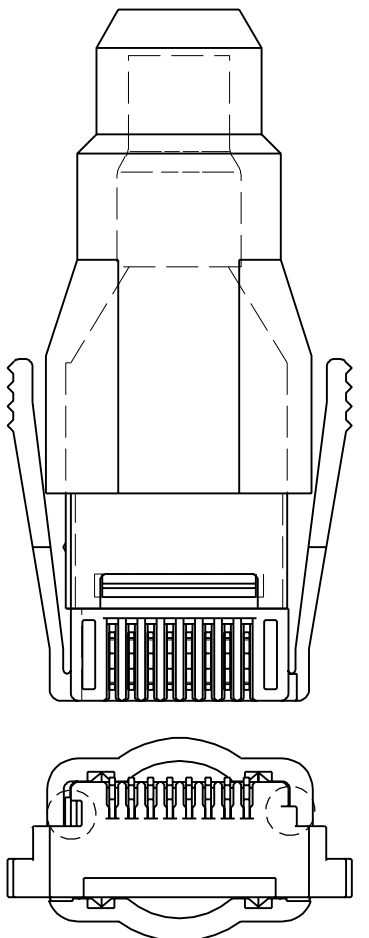


SIDE VIEW OF CONTACT

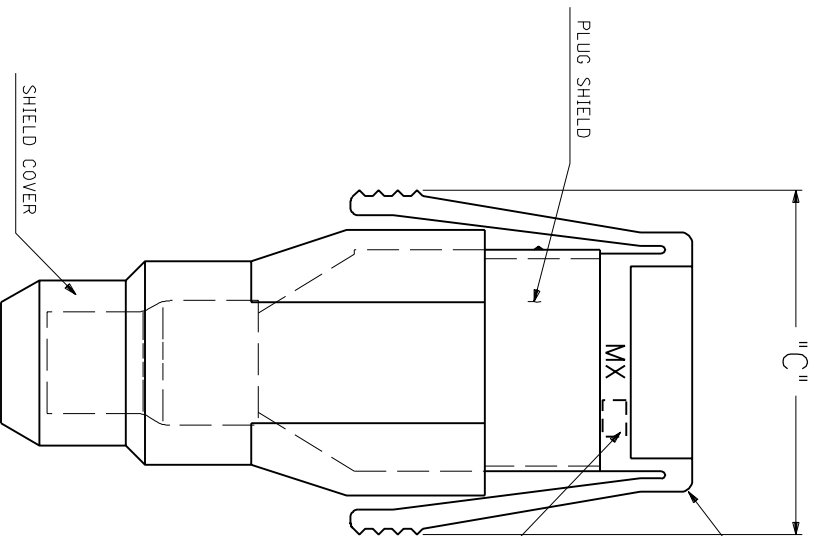
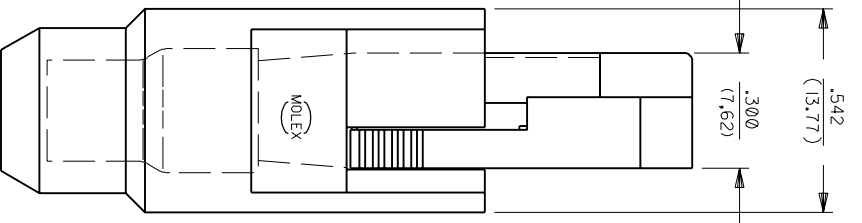
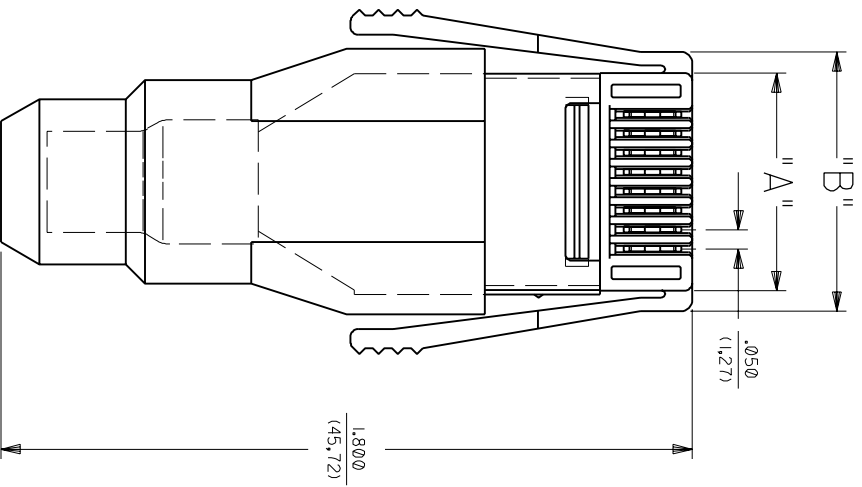
ROHS COMPLIANCE EPR NO. E2007-0364 DRAWN BY: G. DRUMMOND DATE: 2006/11/24 CHECKED BY: J. LONG DATE: 2006/11/27 APPROVED BY: IT DATE: 1985/11/27	DESCRIPTION MATERIAL NO. SDMS-71310-***	QUALITY SYMBOLS	GENERAL TOLERANCES (UNLESS SPECIFIED)	DIMENSION STYLE	SCALE	DESIGN UNITS	THIRD ANGLE PROJECTION																		
		$\nabla=0$ $\nabla=0$	<table border="1"> <tr> <th></th> <th>mm</th> <th>INCH</th> </tr> <tr> <td>4 PLACES</td> <td>± ---</td> <td>± ---</td> </tr> <tr> <td>3 PLACES</td> <td>± ---</td> <td>± ---</td> </tr> <tr> <td>2 PLACES</td> <td>± ---</td> <td>± ---</td> </tr> <tr> <td>1 PLACE</td> <td>± ---</td> <td>± ---</td> </tr> <tr> <td colspan="3">ANGULAR ±1/2°</td> </tr> </table>		mm	INCH	4 PLACES	± ---	± ---	3 PLACES	± ---	± ---	2 PLACES	± ---	± ---	1 PLACE	± ---	± ---	ANGULAR ±1/2°			MM ONLY	4:1	METRIC	
			mm	INCH																					
		4 PLACES	± ---	± ---																					
3 PLACES	± ---	± ---																							
2 PLACES	± ---	± ---																							
1 PLACE	± ---	± ---																							
ANGULAR ±1/2°																									
DRAWN BY: J. LONG DATE: 1985/11/27 CHECKED BY: B. IXLER DATE: 1985/11/27 APPROVED BY: IT DATE: 1985/11/27	TITLE: PLUG ASSEMBLY KIT SEMCONN MOLEX INCORPORATED MATERIAL NO. SDMS-71310-*** DOCUMENT NO.	SEE CHART THIS DRAWING CONTAINS INFORMATION THAT IS PROPRIETARY TO MOLEX INCORPORATED AND SHOULD NOT BE USED WITHOUT WRITTEN PERMISSION	SHEET NO. 1 OF 2																						



KEYING OPTION "1"



KEYING OPTION "2"



SEE SHEET 1 FOR DIMENSIONS

KEYING 1-D,
TYPE 0, 1, OR 2

TERMINATED VIEWS

REV.	SH.	REV.	LTR.	REVISIONS
E				SEE SHEET 1
D				SEE SHEET 1
C				SEE SHEET 1
B				SEE SHEET 1
A				SEE SHEET 1
I				SEE SHEET 1

UNIT	CONVERSION
INCH	MILLIMETER
MILLIMETER	INCH

DESCRIPTION	DATE
1 PLACE	11/27/85
2 PLACE	
3 PLACE	

DATE	BY	CHK'D.	APP'D.
11/27/85	TJC		

FILE NAME	FILE NO.
STD, SEMCONN - PLUG ASS'Y	71310
SHIELD ROUND CABLE	
WITH BLACK COVER	

DATE	BY	CHK'D.	APP'D.
11/27/85	TJC		

DATE	BY	CHK'D.	APP'D.
11/27/85	TJC		