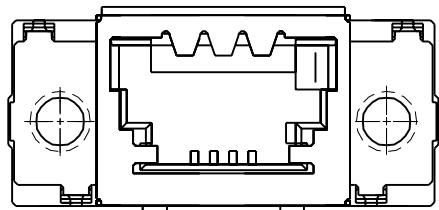
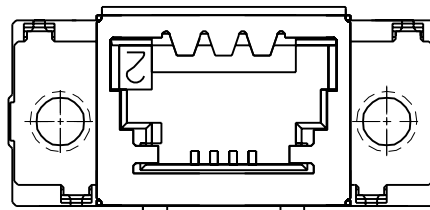


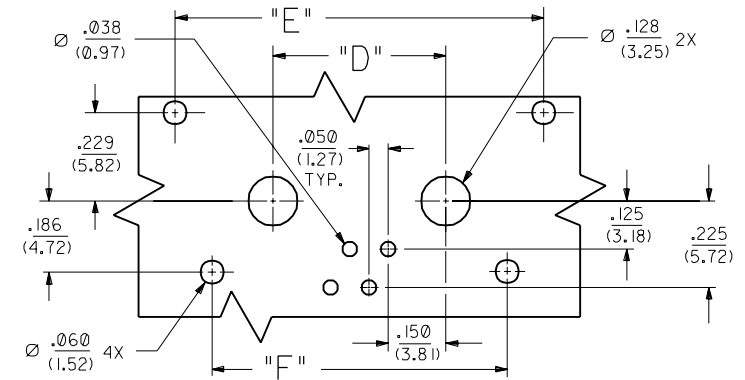
| | | | | | | | | | | | | | | | | | | |
|--|--------------|--|--------------|--|--------------|------|----------|-------|----------|-------|----------|-------|----------|-------|----------|-------|----------|-------|
| 13 | 12 | 11 | 10 | 9 | 8 | 7 | 6 | 71505 | | 4 | 3 | 2 | 1 | | | | | |
| NON-KEYED VERSION A-71505-00** | | KEYING OPTION "1" A-71505-01** | | KEYING OPTION "2" A-71505-02** | | CKT. | DIM. "A" | | DIM. "B" | | DIM. "C" | | DIM. "D" | | DIM. "E" | | DIM. "F" | |
| E.D.P. NUMBER | ENG. NUMBER | E.D.P. NUMBER | ENG. NUMBER | E.D.P. NUMBER | ENG. NUMBER | SIZE | MM | IN. | MM | IN. | MM | IN. | MM | IN. | MM | IN. | MM | IN. |
| 15-83-0904 | A-71505-0004 | 15-83-0934 | A-71505-0104 | 15-83-0954 | A-71505-0204 | 4 | 28.45 | 1.120 | 21.59 | .850 | 16.76 | .660 | 11.43 | .450 | 24.38 | .960 | 19.51 | .768 |
| 15-83-0906 | A-71505-0006 | 15-83-0936 | A-71505-0106 | 15-83-0956 | A-71505-0206 | 6 | 30.99 | 1.220 | 24.13 | .950 | 19.30 | .760 | 13.97 | .550 | 26.92 | 1.060 | 22.05 | .868 |
| 15-83-0908 | A-71505-0008 | 15-83-0938 | A-71505-0108 | 15-83-0958 | A-71505-0208 | 8 | 33.53 | 1.320 | 26.67 | 1.050 | 21.84 | .860 | 16.51 | .650 | 29.46 | 1.160 | 24.59 | .968 |
| 15-83-0916 | A-71505-0016 | 15-83-0946 | A-71505-0116 | 15-83-0966 | A-71505-0216 | 16 | 43.69 | 1.720 | 36.83 | 1.450 | 32.00 | 1.260 | 26.67 | 1.050 | 39.62 | 1.560 | 34.75 | 1.368 |



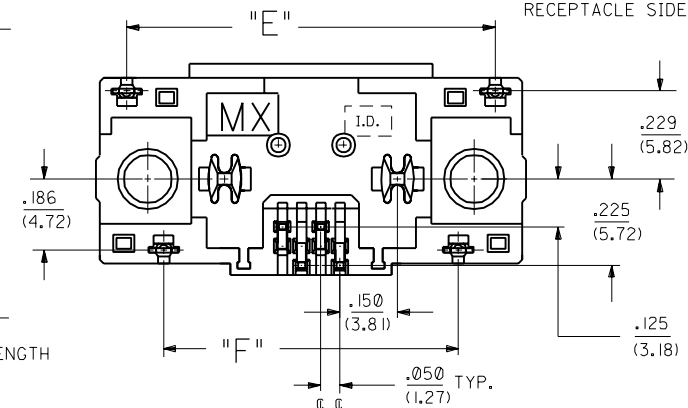
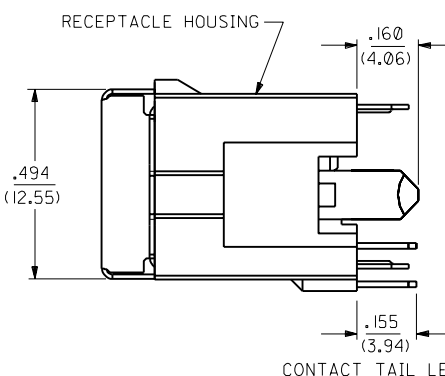
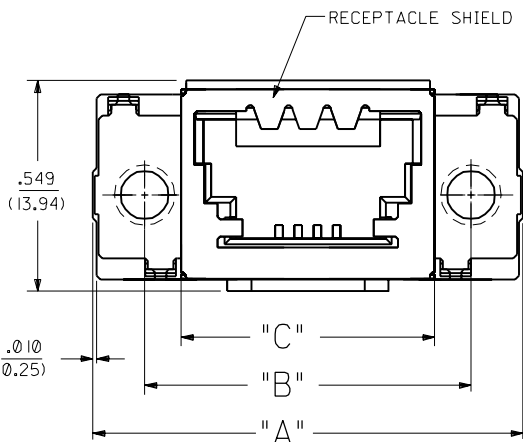
KEYING OPTION "1"
A-71505-01**



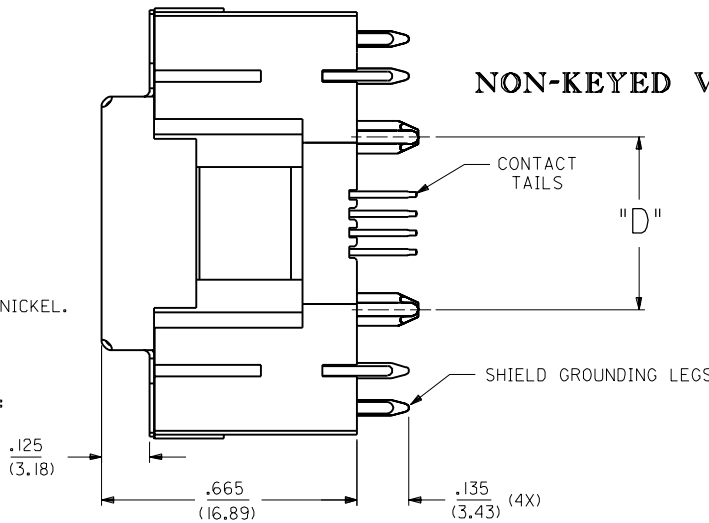
KEYING OPTION "2"
A-71505-02**



RECOMMENDED P.C.B. LAYOUT
RECEPTACLE SIDE SHOWN



NON-KEYED VERSION SHOWN



- NOTES:**
- FOR ILLUSTRATION PURPOSES, THE 4 CKT NON-KEYED VERSION IS SHOWN.
 - MATERIAL:**
HOUSING: GLASS FILLED LIQUID CRYSTAL POLYMER (LCP), UL94 V-0, COLOR: BLACK.
CONTACTS: PHOSPHOR BRONZE
SHIELD: BRASS
 - PLATING:**
SHIELD: (2.54 MICROMETER)/100 MICROINCH BRIGHT TIN OVER NICKEL.
CONTACTS: PHOSPHOR BRONZE
SELECTIVE GOLD (Au) IN THE CONTACT AREA:
THICKNESS=(1.27 MICROMETER)/50 MICROINCH MINIMUM;
SELECTIVE TIN-LEAD (Sn-Pb) ALLOY IN THE PC TAIL AREA:
THICKNESS=(2.54 MICROMETER)/100 MICROINCH MINIMUM;
NICKEL (Ni) UNDERPLATE OVER ENTIRE PIN.
 - CONFORMS TO MOLEX PRODUCT SPEC. PS-71350A.
 - REFER TO PK-70873-0257 FOR STD. PACKAGING.

| | |
|----|---|
| C | CLARIFY PCB LAYOUT EON UDT2000-0921 BARKER 00/10/17 |
| BI | ADD EDP'S & PKG # PER ECR U21744 12/3/92 JANOTA |
| B | ADD STRENGTH RIB PER ECR U21005 2/15/92 JANOTA |
| A | ADD EDP, REM. X PER ECR U12336 12/10/91 JANOTA |

| | | | | | | | |
|---|------|--------------|-----|--|--|---------------------------|--|
| DIMENSIONS SHOWN (METRIC) INCH | | ▽ = 0 | | ▽ = 0 | | REVISE ONLY ON CAD SYSTEM | |
| UNLESS OTHERWISE SPECIFIED TOLERANCES ANGULAR ± 1/2° | | INCH | | METRIC | | TITLE | |
| 3 PLACE ± | 0.10 | --- | --- | SALES ASSEMBLY - SEMCONN SHIELDED VERTICAL RECEPTACLE WITH GROUNDING LEGS | | | |
| 2 PLACE ± | 0.14 | ± 0.25 | --- | MOLEX INCORPORATED | | | |
| 1 PLACE | --- | ± 0.36 | --- | SHEET NO. DATE | | | |
| DRAFT WHERE APPLICABLE MUST REMAIN WITHIN DIMENSIONS | | | | 1 OF 1 2 / 10 / 89 | | | |
| PART NO. | | DRWG. NO. | | SEE CHART SDA-71505-0** | | | |
| DRAWN BY: KJ | | CHK'D BY: KJ | | FILE NAME: 57150501 | | | |
| APP'D BY: MM | | SCALE: 4 : 1 | | THIS DRAWING CONTAINS INFORMATION THAT IS PROPRIETARY TO MOLEX INC. AND SHOULD NOT BE USED WITHOUT WRITTEN PERMISSION. | | | |