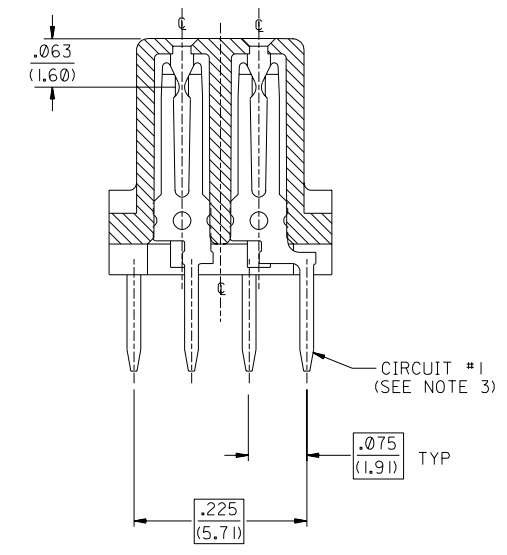
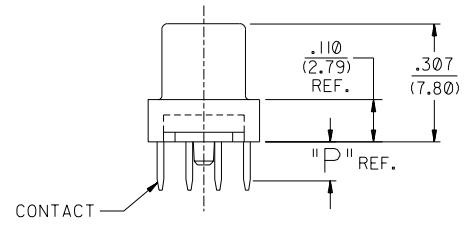
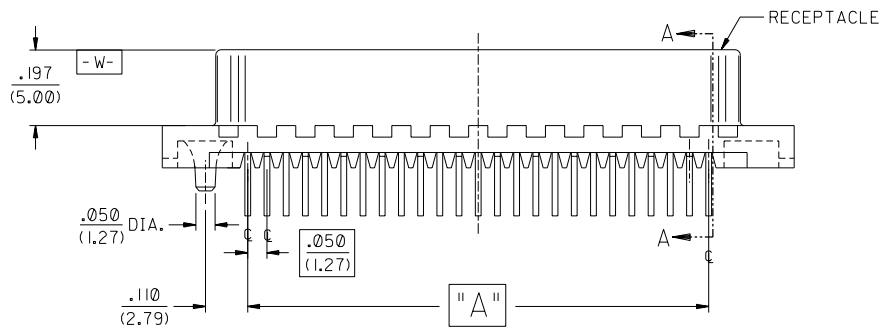
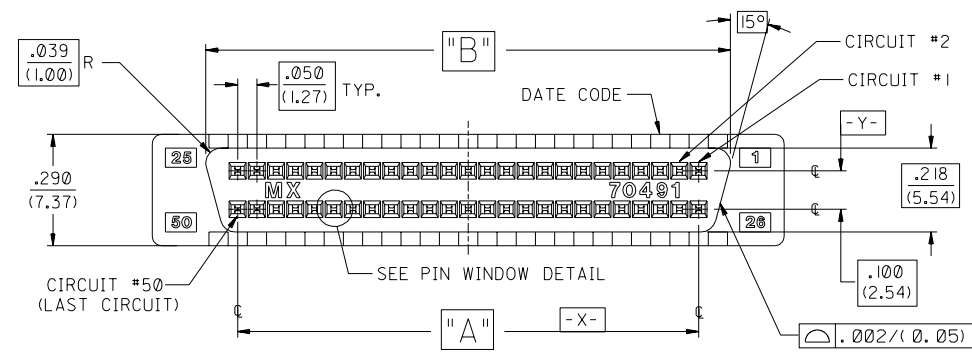
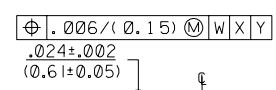
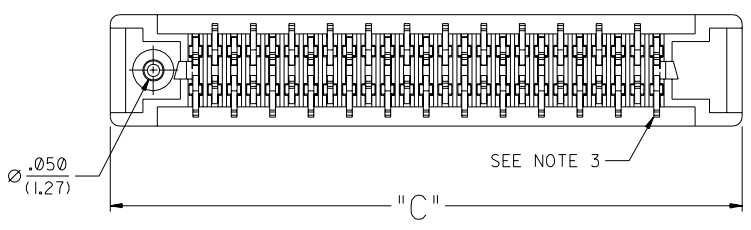


50 CIRCUIT SHOWN



SECTION "A-A"
SCALE 8:1



PIN WINDOW DETAIL
SCALE 10:1

NOTES:

- SEE SHEET 2 FOR PART NO.S AND CHARTED DIMENSIONS AND P.C. BOARD LAYOUT.
- 50 CIRCUIT SHOWN FOR ILLUSTRATION PURPOSES ONLY.
- TAIL PATTERN FIXED AT CIRCUIT NO. (1) POSITION FOR ALL CIRCUIT SIZES SHOWN.

DIMENSIONS SHOWN (METRIC) INCH UNLESS OTHERWISE SPECIFIED TOLERANCES: ANGULAR ± 1/2° 3 PLACE ± .010 2 PLACE ± --- ± 0.25 1 PLACE --- ± --- DRAFT WHERE APPLICABLE MUST REMAIN WITHIN DIMENSIONS DRWG. BY: J. Long APP'D. BY: J. D.		REVISIONS I ADD LEADFREE NOTE ECR# UCP2004-1925 DMORGAN 04/04/02 H ADDED 70491-2014 EDP#015870314 PER EC #UDT1999-0247 J. LONG 98/11/04 G ADDED PART NUMBER A-70491-2013 PER EC #UDT1998-0019 J. LONG 98/03/02		DIMENSIONS SHOWN (METRIC) INCH UNLESS OTHERWISE SPECIFIED TOLERANCES: ANGULAR ± 1/2° 3 PLACE ± .010 2 PLACE ± --- ± 0.25 1 PLACE --- ± --- DRAFT WHERE APPLICABLE MUST REMAIN WITHIN DIMENSIONS DRWG. BY: J. Long APP'D. BY: J. D.		REVISIONS I ADD LEADFREE NOTE ECR# UCP2004-1925 DMORGAN 04/04/02 H ADDED 70491-2014 EDP#015870314 PER EC #UDT1999-0247 J. LONG 98/11/04 G ADDED PART NUMBER A-70491-2013 PER EC #UDT1998-0019 J. LONG 98/03/02		FILE NAME: S7049121.DGN TITLE: SALES SCSI ALL-PLASTIC VERTICAL RECEPTACLE ASSEMBLY WITH PEG MOLEX INCORPORATED LITTLE ROCK, AR 72220 SHEET NO. 1 of 2 DATE 06/17/92 U.S.A. DIV. TC SIZE C	
---	--	---	--	---	--	---	--	---	--

70491

ITEM NO.	ENG NO.	CKT. SIZE	PLATING	DIM. A		DIM. B		DIM. C		DIM. P TAIL LENGTH	RECOMMENDED PCB		
				INCH	MM	INCH	MM	INCH	MM		INCH	MM	
	015-87-0301	70491-2001	50	GOLD 30	1.200	30.48	1.366	34.70	1.645	41.78	.125	.062 OR .093	1.57 OR 2.36
X	015-87-0302	70491-2002										OR	OR
	015-87-0303	70491-2003	50	GOLD 30	1.200	30.48	1.366	34.70	1.645	41.78	.165	.125	3.18
X	015-87-0304	70491-2004											
	015-87-0305	70491-2005	68	GOLD 30	1.650	41.91	1.816	46.13	2.095	53.21	.125	.062 OR .093	1.57 OR 2.36
X	015-87-0306	70491-2006										OR	OR
	015-87-0307	70491-2007	68	GOLD 30	1.650	41.91	1.816	46.13	2.095	53.21	.165	.125	3.18
X	015-87-0308	70491-2008											
	015-87-0309	70491-2009	50	GOLD 30	1.200	30.48	1.366	34.70	1.645	41.78	.080	.062	1.57
X	015-87-0310	70491-2010											
	015-87-0311	70491-2011	68	GOLD 30	1.650	41.91	1.816	46.13	2.095	53.21	.080	.062	1.57
X	015-87-0312	70491-2012											
	015-87-0313	70491-2013	68	GOLD 15	1.650	41.91	1.816	46.13	2.095	53.21	.125	.062 OR .093	1.57 OR 2.36
X	015-87-0314	70491-2014	68	GOLD 15	1.650	41.91	1.816	46.13	2.095	53.21	.080	.062	1.57

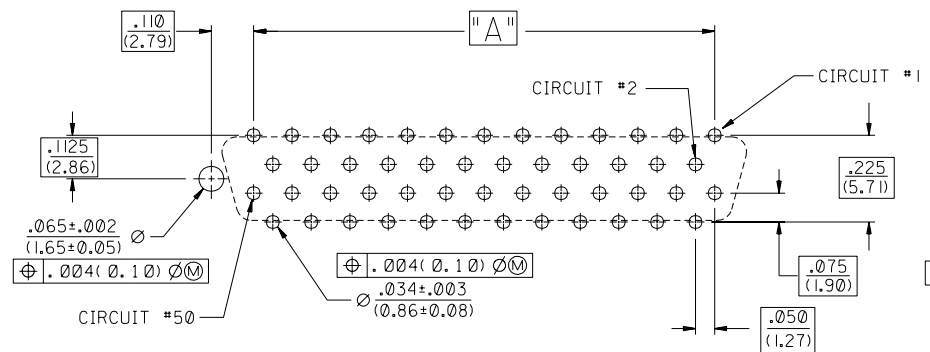
ASSEMBLY NO. LEGEND:

A-70491-2 ***

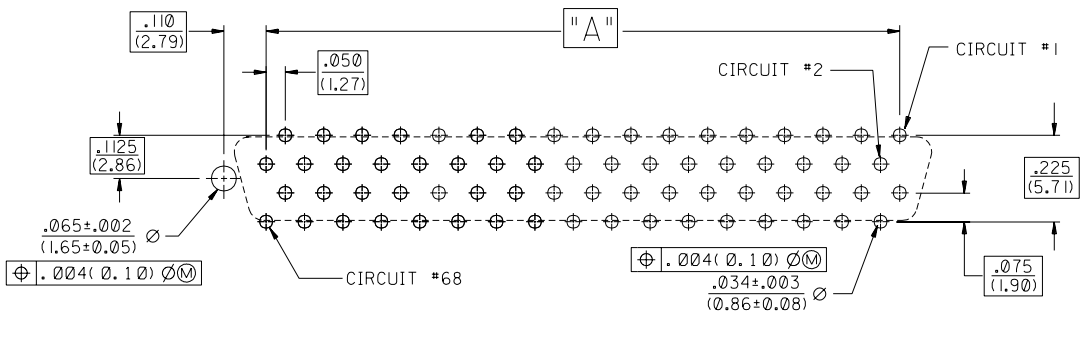
CIRCUIT SIZE, PLATING, AND TAIL LENGTH

LEFT PEG OPTION

X = INDICATED "NOT TOOLED"



RECOMMENDED 50 CKT. P.C. BOARD LAYOUT
CONNECTOR SIDE



RECOMMENDED 68 CKT. P.C. BOARD LAYOUT
CONNECTOR SIDE

NOTES:

- REFER TO PS-79058 PRODUCT SPEC. FOR ELECTRICAL, MECHANICAL AND ENVIRONMENTAL SPECIFICATIONS.
- MATERIAL:
RECEPTACLE HOUSING: GLASS FILLED LIQUID CRYSTAL POLYMER (LCP);
COLOR: BLACK; UL 94V-0
CONTACTS: PHOSPHOR BRONZE
- PACKAGING:
PARTS PACKAGED IN TUBES PER PK-70873-0427.
- FINISHES: TERMINALS:
(GOLD 15)
SELECTIVE GOLD: THICKNESS= 15 MICROINCHES/(0.38 MICROMETERS) MINIMUM.
SELECTIVE TIN: THICKNESS= 75 MICROINCHES/(1.90 MICROMETERS) MINIMUM.
NICKEL UNDERPLATE OVERALL.
(GOLD 30)
SELECTIVE GOLD: THICKNESS= 30 MICROINCHES/(0.76 MICROMETERS) MINIMUM.
SELECTIVE TIN: THICKNESS= 75 MICROINCHES/(1.90 MICROMETERS) MINIMUM.
NICKEL UNDERPLATE OVERALL.

NOTE FOR LEAD FREE CONVERSION:

THE PRIMARY SHIPPING CARTON WILL BE LABELED "COMPLIANT TO ROHS DIRECTIVE 2002/95/EC AND ELV ANNEX II OF DIRECTIVE 2000/53/EC". CARTONS WITHOUT THIS LABEL MAY CONTAIN PRODUCT WITH LEAD.

LTR.	REVISIONS	LTR.	REVISIONS

DIMENSIONS SHOWN (METRIC) INCH	
UNLESS OTHERWISE SPECIFIED TOLERANCES: ANGULAR 1/2°	
5 PLACE ± .010	---
2 PLACE ± ---	± 0.25
1 PLACE ---	± ---
DRAFT WHERE APPLICABLE MUST REMAIN WITHIN DIMENSIONS	
DRG. BY: J. Long	CHK'D. BY: DCB
APP'D. BY: J D	SCALE: :

▽ = 0	▼ = 0	REVISE ONLY ON CAD SYSTEM
TITLE: SALES SCSI ALL-PLASTIC VERTICAL RECEPTACLE ASSEMBLY WITH PEG		
MOLEX INCORPORATED	SHEET NO. 2	DATE 06/17/92
U.S.A.	DRWG. NO. SDA-70491-2***	
FILE NAME: 51049122.DGN	THIS DRAWING CONTAINS INFORMATION THAT IS PROPRIETARY TO MOLEX INC. AND SHOULD NOT BE USED WITHOUT WRITTEN PERMISSION.	
DIV. TC	SIZE C	

70491

Mouser Electronics

Authorized Distributor

Click to View Pricing, Inventory, Delivery & Lifecycle Information:

[Molex:](#)

[15-87-0301](#) [15-87-0303](#) [15-87-0305](#) [15-87-0307](#) [15-87-0311](#) [15-87-0205](#)