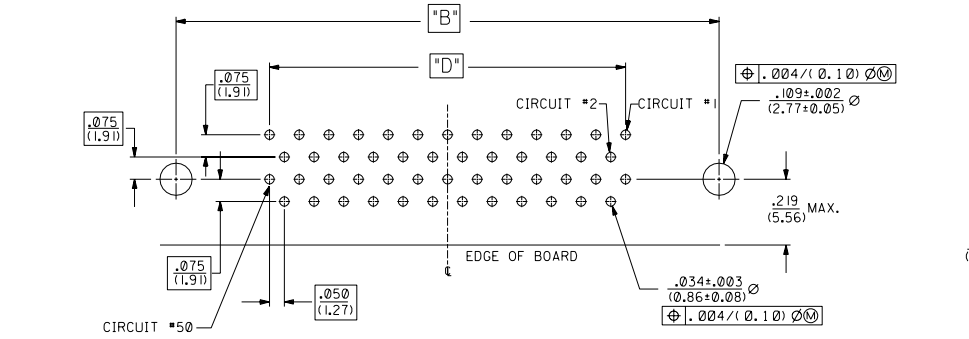
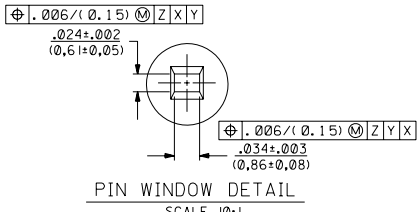


TYPE 1168 CKT P.C. BOARD LAYOUT  
CONNECTOR SIDE (SCALE 4:1)

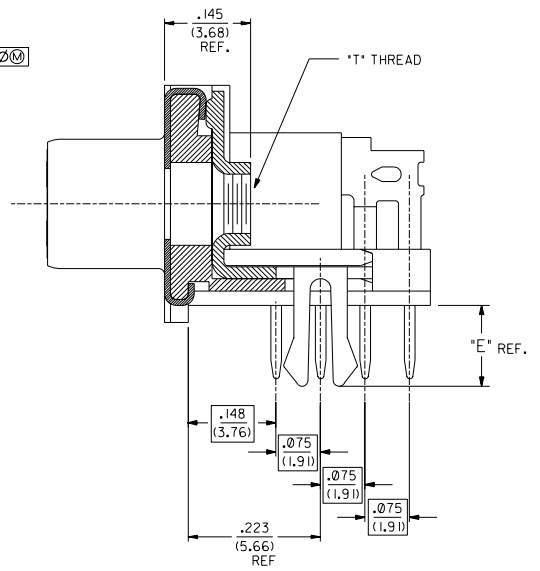


TYPE 150 CKT P.C. BOARD LAYOUT  
CONNECTOR SIDE (SCALE 4:1)

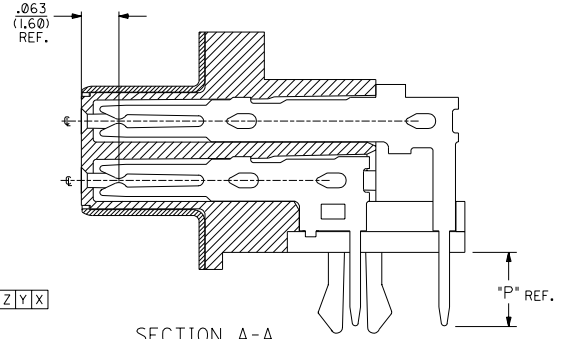
- NOTES:
- REFER TO PS-79058 PRODUCT SPEC. FOR ELECTRICAL, MECHANICAL AND ENVIRONMENTAL SPECIFICATIONS.
  - MATERIAL:  
RECEPTACLE HOUSING: GLASS FILLED LCP (LIQUID CRYSTAL POLYMER); COLOR-BLACK; UL 94V-0  
CONTACTS: PHOSPHOR BRONZE  
SHIELD: STEEL WITH BRIGHT TIN OVER NICKEL PLATING OVER COPPER FLASH.  
GROUNDING CLIP: BRASS WITH TIN OVER NICKEL PLATE
  - PACKAGING:  
PARTS PACKAGED IN TUBES PER PK-70873-0207
  - PLATING:  
SELECTIVE GOLD: THICKNESS= 30 MICRONS/(0.76 MICROMETERS) MINIMUM.  
SELECTIVE TIN: THICKNESS= 75 MICRONS/(1.90 MICROMETERS) MINIMUM.  
NICKEL UNDERPLATE OVERALL.
- NOTE FOR LEAD FREE CONVERSION:  
THE PRIMARY SHIPPING CARTON WILL BE LABELED "COMPLIANT TO RoHS DIRECTIVE 2002/95/EC AND ELV ANNEX II OF DIRECTIVE 2000/53/EC". CARTONS WITHOUT THIS LABEL MAY CONTAIN PRODUCT WITH LEAD.



PIN WINDOW DETAIL  
SCALE 10:1



SECTION B-B



SECTION A-A  
SEE NOTE 2 (SHEET 1)

LTR. REVISIONS		LTR. REVISIONS		K SEE SHEET 1		J1 SEE SHEET 1		I SEE SHEET 1		M SEE SHEET 1		MFG. SH. REV.																																			
<table border="1"> <tr> <th colspan="2">DIMENSIONS SHOWN IN METRIC INCH</th> <th colspan="2">UNLESS OTHERWISE SPECIFIED</th> </tr> <tr> <td>INCH</td> <td>METRIC</td> <td>TOLERANCES</td> <td>ANGULAR ± 1/2°</td> </tr> <tr> <td>3 PLACE ±</td> <td>.005</td> <td>---</td> <td>---</td> </tr> <tr> <td>2 PLACE ±</td> <td>---</td> <td>± 0.15</td> <td>---</td> </tr> <tr> <td>1 PLACE</td> <td>---</td> <td>± ---</td> <td>---</td> </tr> </table>										DIMENSIONS SHOWN IN METRIC INCH		UNLESS OTHERWISE SPECIFIED		INCH	METRIC	TOLERANCES	ANGULAR ± 1/2°	3 PLACE ±	.005	---	---	2 PLACE ±	---	± 0.15	---	1 PLACE	---	± ---	---	<table border="1"> <tr> <th colspan="2">TITLE</th> <th colspan="2">REVISE ONLY ON CAD SYSTEM</th> </tr> <tr> <td colspan="2">SCSI SHIELDED RECEPTACLE ASSEMBLY</td> <td colspan="2"></td> </tr> <tr> <td colspan="2">MOLEX INCORPORATED</td> <td>SHEET NO. 2</td> <td>DATE 08/14/89</td> </tr> <tr> <td colspan="2">FILE NAME 579058A2</td> <td colspan="2">DRWG. NO. SDA-79059-1A</td> </tr> </table>		TITLE		REVISE ONLY ON CAD SYSTEM		SCSI SHIELDED RECEPTACLE ASSEMBLY				MOLEX INCORPORATED		SHEET NO. 2	DATE 08/14/89	FILE NAME 579058A2		DRWG. NO. SDA-79059-1A	
DIMENSIONS SHOWN IN METRIC INCH		UNLESS OTHERWISE SPECIFIED																																													
INCH	METRIC	TOLERANCES	ANGULAR ± 1/2°																																												
3 PLACE ±	.005	---	---																																												
2 PLACE ±	---	± 0.15	---																																												
1 PLACE	---	± ---	---																																												
TITLE		REVISE ONLY ON CAD SYSTEM																																													
SCSI SHIELDED RECEPTACLE ASSEMBLY																																															
MOLEX INCORPORATED		SHEET NO. 2	DATE 08/14/89																																												
FILE NAME 579058A2		DRWG. NO. SDA-79059-1A																																													
DRAFT WHERE APPLICABLE MUST REMAIN WITHIN DIMENSIONS DRG. BY: DJB APP'D: DJB FILE NAME: 579058A2 DRG. NO.: SDA-79059-1A SCALE: 8:1										THIS DRAWING CONTAINS INFORMATION THAT IS PROPRIETARY TO MOLEX INC. AND SHOULD NOT BE USED WITHOUT WRITTEN PERMISSION. DC   C																																					