

## FEATURES AND SPECIFICATIONS

**Features and Benefits**

- Polarized D-shaped leaf-contact connector
- Metal retention clips for mechanical hold down before and after processing
- Low profile—12.50mm (.492") stack height for parallel board packaging
- Meets VESA standards for advanced video and graphics cards (68 and 80 circuits)
- Surface Mount Compatible

**Reference Information**

Product Specification: PS-71660

Packaging: Tray

UL File No.: E29179

CSA File No.: LR19980-239A

Mates With: [71660](#) and [87552](#)

Designed In: Inches

**Electrical**

Voltage: 30V

Current: 1.0A

Contact Resistance: 20mΩ max.

Dielectric Withstanding Voltage: 500V AC

Insulation Resistance: 100 MΩ min.

**Mechanical**

Contact Retention to Housing: 500g min.

Mating Force: 90g max.

Unmating Force: 15g min.

Normal Force: 90g

Durability: 500 cycles min.

**Physical**

Housing: High-temperature thermoplastic, UL 94V-0


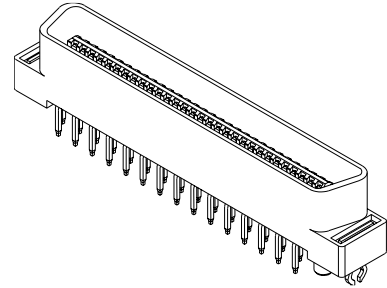
Retention Clip: Copper Alloy

Contact: Copper Alloy

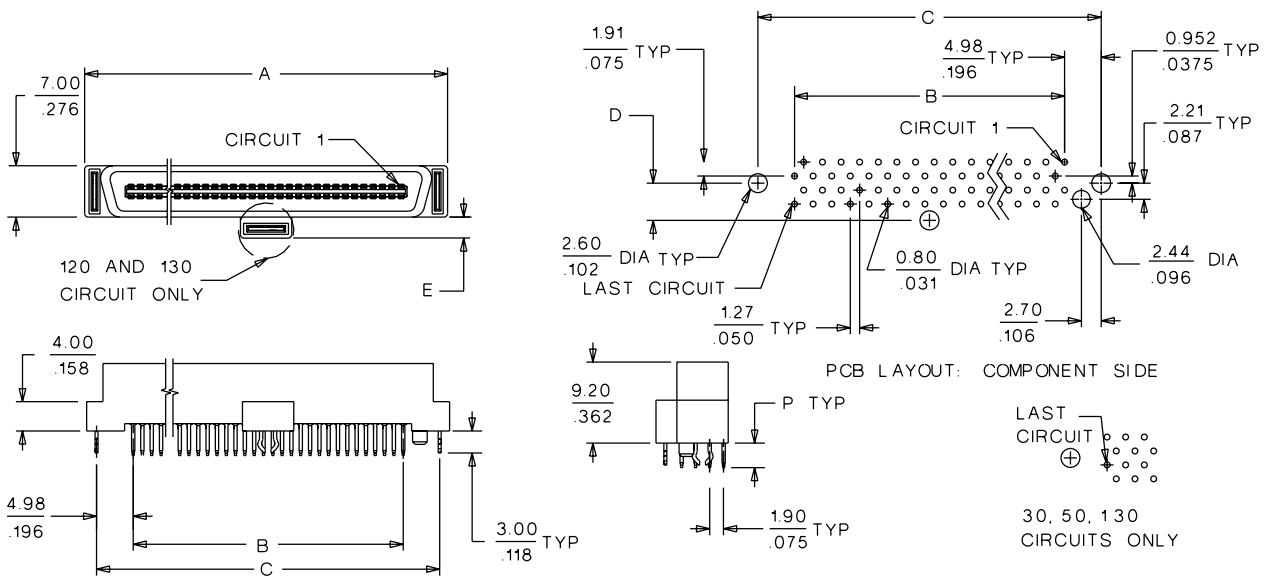
Plating: 30μ" min. Gold over Nickel in contact area,

100μ" min. Tin/Lead over Nickel on tails

Operating Temperature: -40 to +105°C


**1.27mm (.050") Pitch**  
**EBBI™ 50D**  
**Plug**
**71661****Vertical**

## CATALOG DRAWING (FOR REFERENCE ONLY)

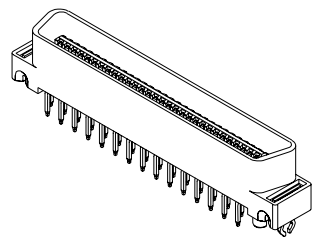
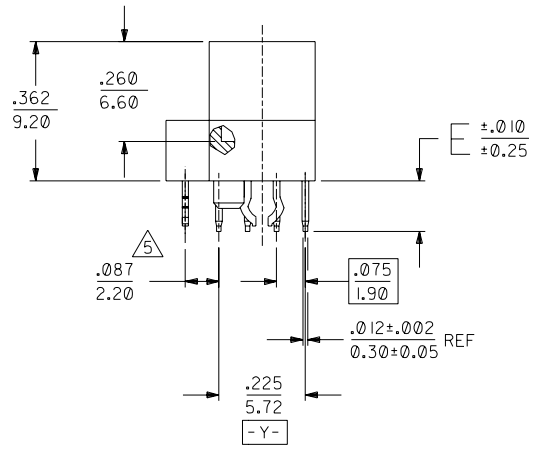
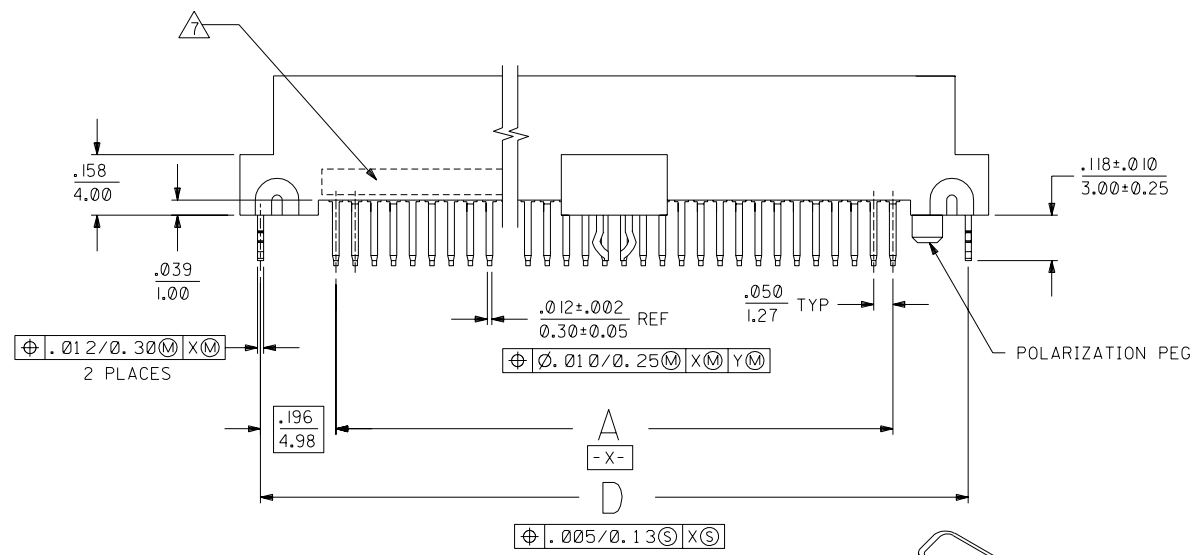
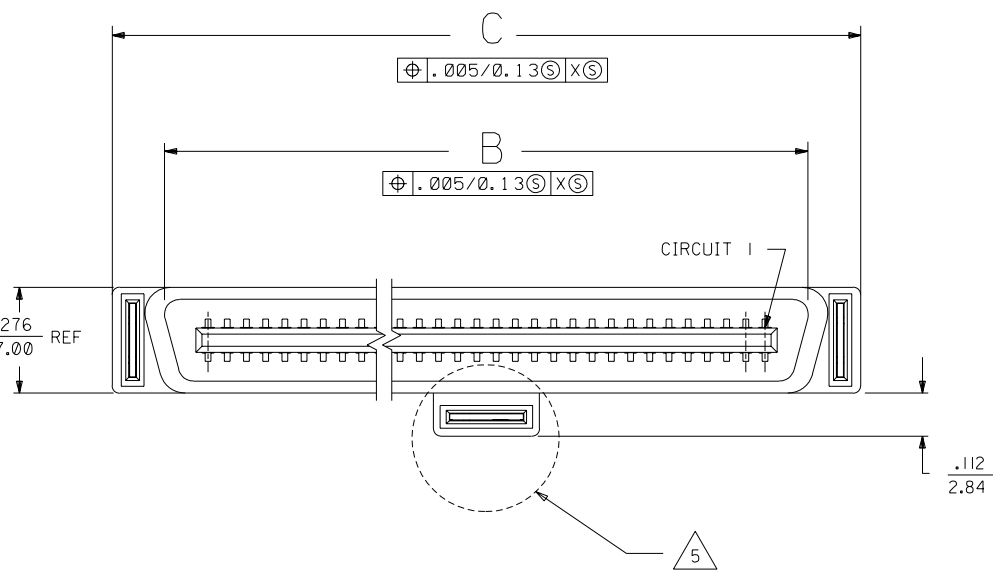


## ORDERING INFORMATION AND DIMENSIONS

Circuits	Order No.		Dimension				
	Tail Length (Dim. P) 3.40mm (.134")	Tail Length (Dim. P) 2.79mm (.110")	A	B	C	D	E
30	15-92-2030	15-92-2430	30.45 (1.199)	17.78 (.700)	27.75 (1.092)		
40	15-92-2040	15-92-2440	36.80 (1.449)	24.13 (.950)	34.10 (1.342)		
50	15-92-2050	15-92-2450	43.15 (1.699)	30.48 (1.200)	40.45 (1.592)		
60	15-92-2060	15-92-2460	49.50 (1.949)	36.83 (1.450)	46.80 (1.842)		
68	15-92-2068	15-92-2468	54.58 (2.149)	41.91 (1.650)	51.88 (2.042)		
80	15-92-2080	15-92-2480	62.20 (2.449)	49.53 (1.950)	59.50 (2.342)		
100	15-92-2100	15-92-2500	74.90 (2.949)	62.23 (2.450)	72.20 (2.842)		
120	15-92-2120	15-92-2520	87.60 (3.449)	74.93 (2.950)	84.90 (3.342)	5.08 (.200)	2.84 (.112)

**NOTES:**

- 1) MATERIALS:  
HOUSING - LIQUID CRYSTAL POLYMER (LCP), GLASS FILLED, UL94V-0, COLOR: BLACK  
TERMINALS - PHOSPHOR BRONZE  
METAL PEGS - PHOSPHOR BRONZE
- 2) TERMINAL FINISH:  
30 MICROINCH/0.76 MICROMETER MINIMUM GOLD IN CONTACT AREA AND  
50 MICROINCH/1.27 MICROMETER MINIMUM TIN-LEAD IN TAIL AREA OVER NICKEL OVERALL.
- 3) ASSEMBLY MATES WITH MOLEX P/N SDA-71660-\*\*\*\*.
- 4) CONFORMS TO PRODUCT SPECIFICATION PS-71660.
- 5) CENTER PEG IS ONLY ON 120 AND 130 CIRCUIT ASSEMBLIES.
- 6) RECOMMENDED P.C. BOARD THICKNESS IS .062 (1.6).
- 7) FOUR DIGIT DATE CODE (WK YR), EXAMPLE => 26 96 LOCATED IN AREA INDICATED.
- 8) SEE CHART ON SHEET 2 FOR PACKAGING INFORMATION.



60 CIRCUIT ASSEMBLY SHOWN  
SCALE - 2:1

K	CHANGE MATL NOTE ECN UCP2003-1634 BBARKER 03/01/28
J	REVISED PER ECN U10802 WHETSTON 97-1-16
I	REVISED PER ECN U7090 ACHAMMER 96/7/26
H	REVISED PER ECN U60641 11-28-95 DRS
G	REVISED PER ECN U40506 4-15-94 RAN
F	REVISED PER ECN U30614 5-27-93 RAN
E	REVISED PER ECN U30129 2-26-93 RAN
D	REVISED PER ECN U21449 10-12-92 RAN
C	REVISED PER ECN U21311 9-15-92 RAN
B	REVISED PER ECN U21138 8-7-92 RAN
A	INITIAL RELEASE PER ECN U20866 6-20-92 RAN

DIMENSIONS SHOWN (METRIC) INCH UNLESS OTHERWISE SPECIFIED TOLERANCES: ANGULAR $\pm 1/2^\circ$		REVISIONS	
3 PLACE $\pm .005$	INCH	2	K
2 PLACE $\pm .01$ $\pm 0.13$	METRIC	1	K
1 PLACE --- $\pm 0.25$		MFG, SH, REV, LTR.	
DRAWING INFORMATION		REVISE ONLY ON CAD SYSTEM	
DRAWG. BY: RAN		TITLE: SALES ASSEMBLY	
CHK'D. BY: RAN		MOLEX EBBI 50D VERTICAL	
APPR'D. BY: CAB		PLUG CONNECTOR	
SCALE: 4:1		MOLEX INCORPORATED	
		SHEET NO. DATE	
		U.S.A. 1 OF 2 6/15/92	
		PART NO. DRWG. NO.	
		SDA-71661-1***	
		FILE NAME: 571661X1	
		THIS DRAWING CONTAINS INFORMATION THAT IS PROPRIETARY TO MOLEX INC. AND SHOULD NOT BE USED WITHOUT WRITTEN PERMISSION	

