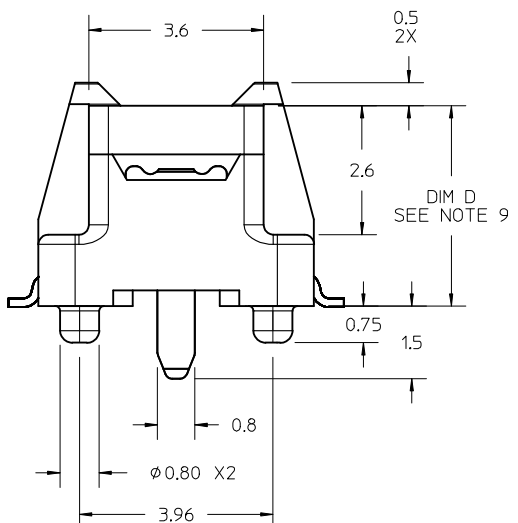
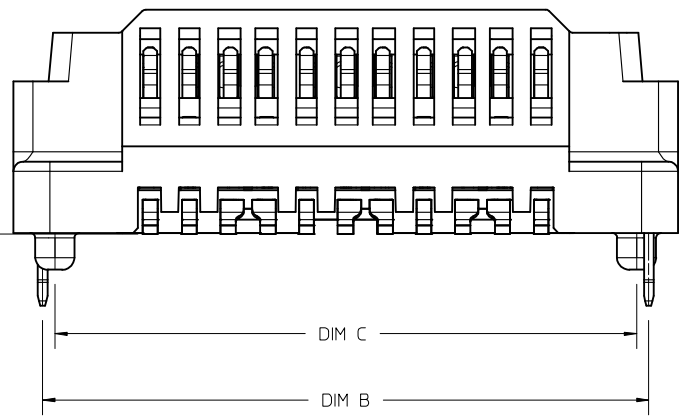
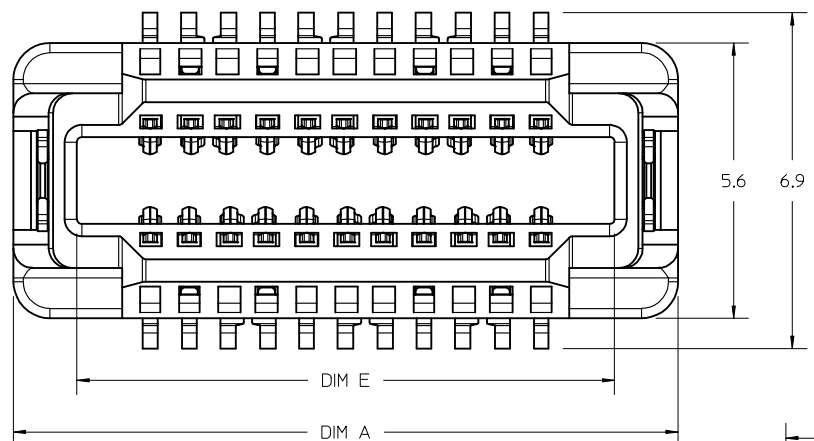


10	9	8	7	6	5	4	3	2	1
PART NUMBER	CKT SIZE	DIFF PAIRS	SPARE CKTS	DIM A	DIM B	DIM C	DIM E	DIM D	
171450-3102	22	6	2	13.6	12.40	11.90	11.0	4.10	
171450-3106	60	16	8	28.8	27.60	27.10	26.2	4.10	
171450-3114	82	22	10	41.6	40.40	39.90	11.0/ 26.2	4.10	

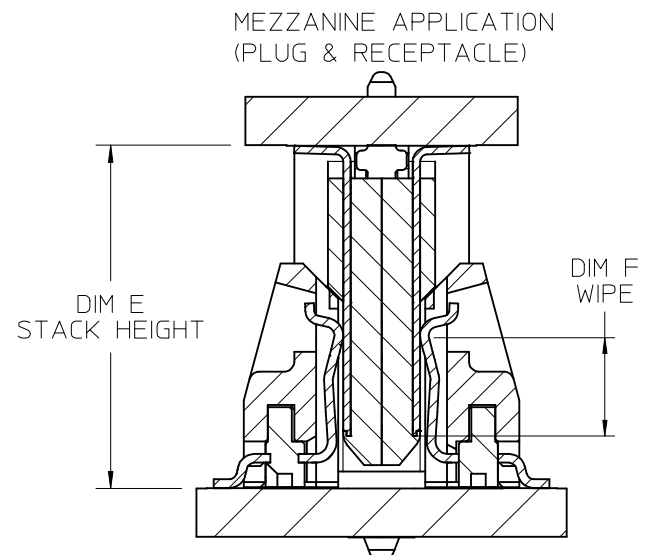
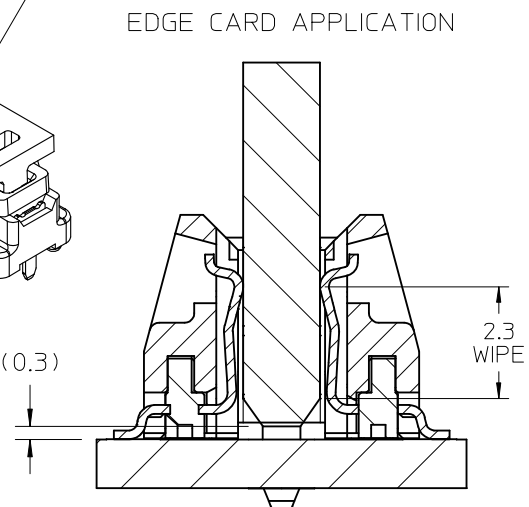
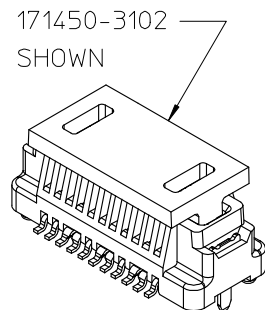
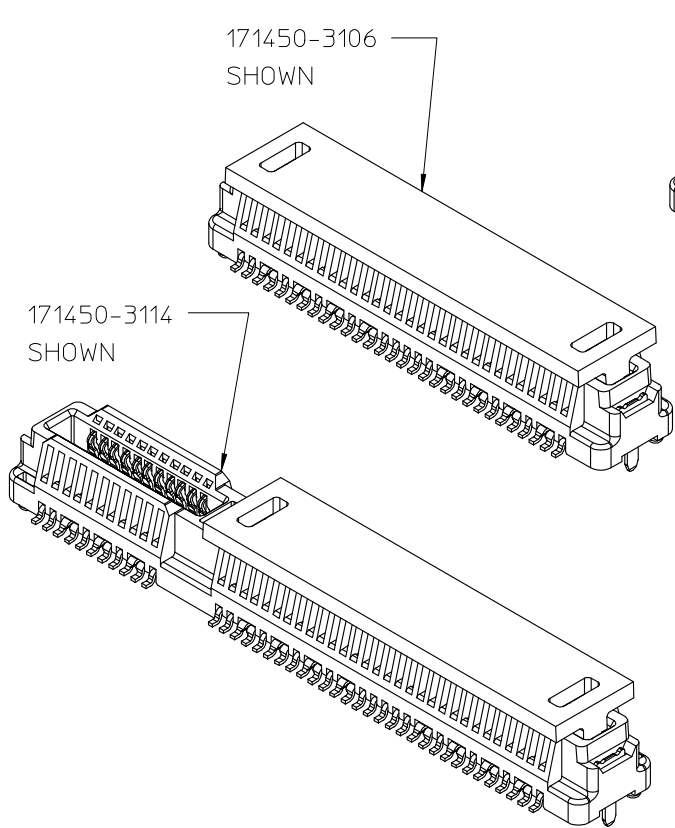


- NOTES:
1. MATERIALS: HOUSING: LCP, UL94V-0, BLACK
CONTACTS: HIGH PERFORMANCE COPPER ALLOY
 2. FINISH: 0.76 μ m MIN SELECT GOLD IN CONTACT AREA,
SELECT MATTE TIN IN TAIL AREA, OVERALL NICKEL.
 3. PRODUCT SPECIFICATION: PS-171446-0001
 4. PACKAGING SPECIFICATION: PK-70873-6002
 5. MATES WITH SPEEDSTACK PLUGS: 171446 & 171810
 6. APPLICATION SPECIFICATION: AS-171450-9999
 7. COSMETIC SPECIFICATION: PS-45499-002 CLASS B
 8. PART STATUS: CONTACT MOLEX
 9. DIM D ON THIS DRAWING PLUS DIM D ON DRAWING # SD-171446-1000
EQUALS THE SYSTEM MATED STACK HEIGHT
 10. PARTS SHIPPED WITH PICK AND PLACE COVERS.

UPDATE EDGE CARD EC NO: UCP2015-5331 DRWN: JB INGHAM 2015/08/24 CHKD: DMC GOWAN 2015/08/24 APPR: DMC GOWAN 2015/09/18 REV C	QUALITY SYMBOLS $\nabla = 0$ $\nabla = 0$ $\nabla = 0$	GENERAL TOLERANCES (UNLESS SPECIFIED)		DIMENSION STYLE MM ONLY		SCALE 10:1	DESIGN UNITS METRIC	THIRD ANGLE PROJECTION			
		4 PLACES \pm --- \pm --- 3 PLACES \pm --- \pm --- 2 PLACES \pm 0.13 \pm --- 1 PLACE \pm 0.25 \pm --- 0 PLACE \pm --- \pm ---	mm INCH \pm --- \pm --- \pm --- \pm --- \pm --- \pm --- \pm --- \pm --- \pm --- \pm ---	DRAWN BY JB INGHAM	DATE 2014/11/11	TITLE SPEEDSTACK RECEPTACLE ASSEMBLY SALES DRAWING		molex		SHEET NO. 1 OF 8	
		ANGULAR $\pm 1/2^\circ$ DRAFT WHERE APPLICABLE MUST REMAIN WITHIN DIMENSIONS		CHECKED BY DMC GOWAN		DATE 2014/11/11		APPROVED BY DMC GOWAN		DATE 2015/01/26	
				MATERIAL NO. SEE CHART		DOCUMENT NO. SD-171450-3000					

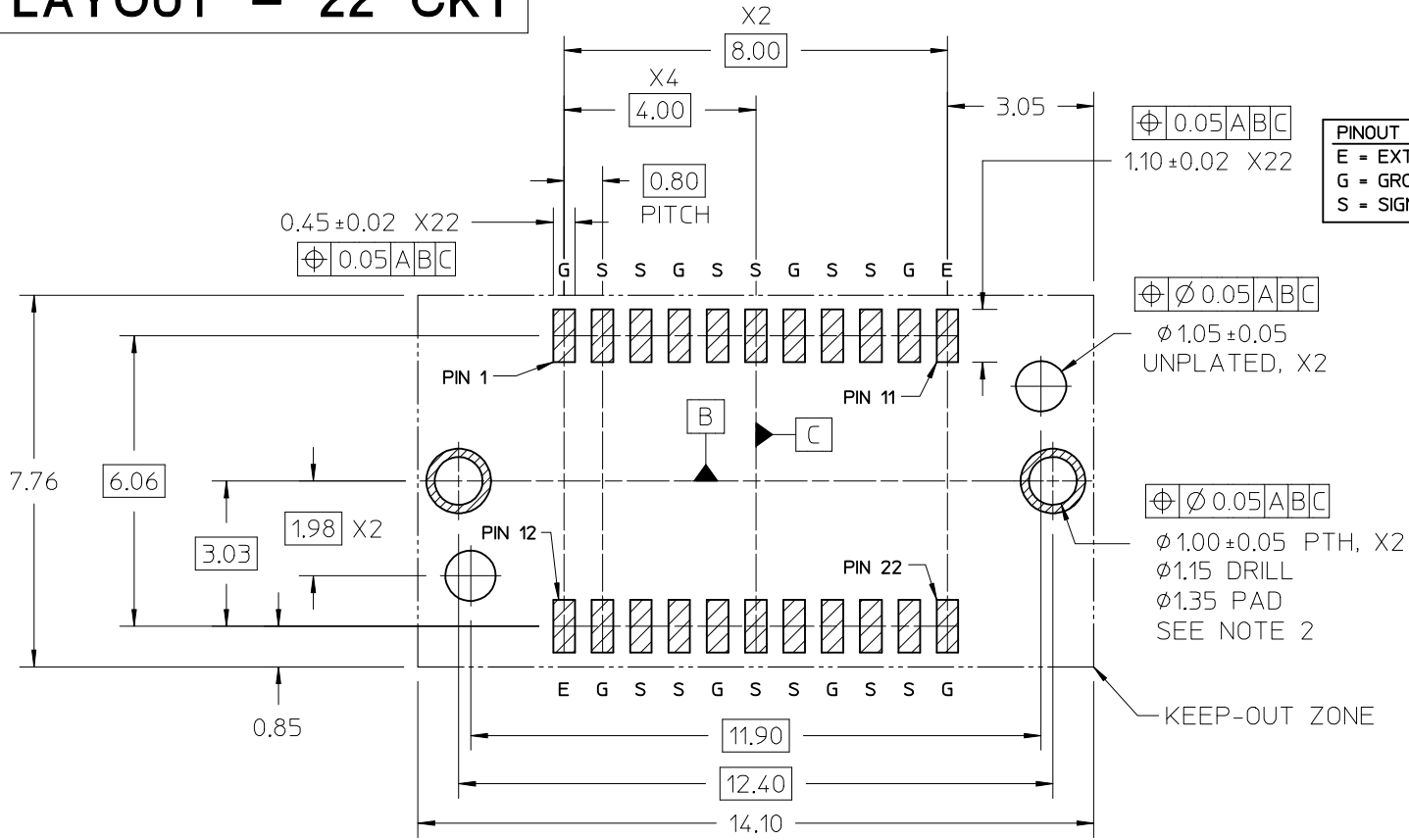
MEZZANINE (PLUG & RECEPTACLE) STACKING CHART

RECEPTACLE OPTIONS	MOLEX P/N	HEIGHT	PLUG OPTIONS (1mm WIPE)				PLUG OPTIONS (2mm WIPE)				
			HEIGHT	1mm	2mm	3mm	4mm	1mm	2mm	3mm	4mm
			22 CKT	171446-1101	171446-1102	171446-1103	171446-1104	171446-1105	171446-1106	171446-1107	171446-1108
60 CKT	171446-1109	171446-1110	171446-1111	171446-1112	171446-1113	171446-1114	171446-1115	171446-1116			
22 CKT	171450-3102	4mm	5/1	6/1	7/1	8/1	5/2	6/2	7/2	8/2	
60 CKT	171450-3106										
82 CKT	171450-3114										
CIRCUITS	MOLEX P/N	HEIGHT	STACK HEIGHT (DIM E)/WIPE (DIM F)								



SEE SHEET 1 EC NO: UCP2015-5331 DRWN: JBINGHAM 2015/08/24 CHKD: DMCGOWAN 2015/08/24 APPR: DMCGOWAN 2015/09/18	QUALITY SYMBOLS $\nabla/0$ $\nabla/0$ $\nabla/0$	GENERAL TOLERANCES (UNLESS SPECIFIED) <table border="1"> <thead> <tr> <th></th> <th>mm</th> <th>INCH</th> </tr> </thead> <tbody> <tr> <td>4 PLACES</td> <td>\pm---</td> <td>\pm---</td> </tr> <tr> <td>3 PLACES</td> <td>\pm---</td> <td>\pm---</td> </tr> <tr> <td>2 PLACES</td> <td>\pm0.13</td> <td>\pm---</td> </tr> <tr> <td>1 PLACE</td> <td>\pm0.25</td> <td>\pm---</td> </tr> <tr> <td>0 PLACE</td> <td>\pm---</td> <td>\pm---</td> </tr> </tbody> </table>		mm	INCH	4 PLACES	\pm ---	\pm ---	3 PLACES	\pm ---	\pm ---	2 PLACES	\pm 0.13	\pm ---	1 PLACE	\pm 0.25	\pm ---	0 PLACE	\pm ---	\pm ---	DIMENSION STYLE MM ONLY DRAWN BY: JBINGHAM DATE: 2014/11/11 CHECKED BY: DMCGOWAN DATE: 2014/11/11 APPROVED BY: DMCGOWAN DATE: 2015/01/26	SCALE: 10:1 DESIGN UNITS: METRIC THIRD ANGLE PROJECTION
		mm	INCH																			
	4 PLACES	\pm ---	\pm ---																			
	3 PLACES	\pm ---	\pm ---																			
2 PLACES	\pm 0.13	\pm ---																				
1 PLACE	\pm 0.25	\pm ---																				
0 PLACE	\pm ---	\pm ---																				
	ANGULAR $\pm 1/2^\circ$ DRAFT WHERE APPLICABLE MUST REMAIN WITHIN DIMENSIONS	MATERIAL NO. SEE CHART	DOCUMENT NO. SD-171450-3000	SHEET NO. 2 OF 8																		
		THIS DRAWING CONTAINS INFORMATION THAT IS PROPRIETARY TO MOLEX INCORPORATED AND SHOULD NOT BE USED WITHOUT WRITTEN PERMISSION																				

PCB LAYOUT - 22 CKT



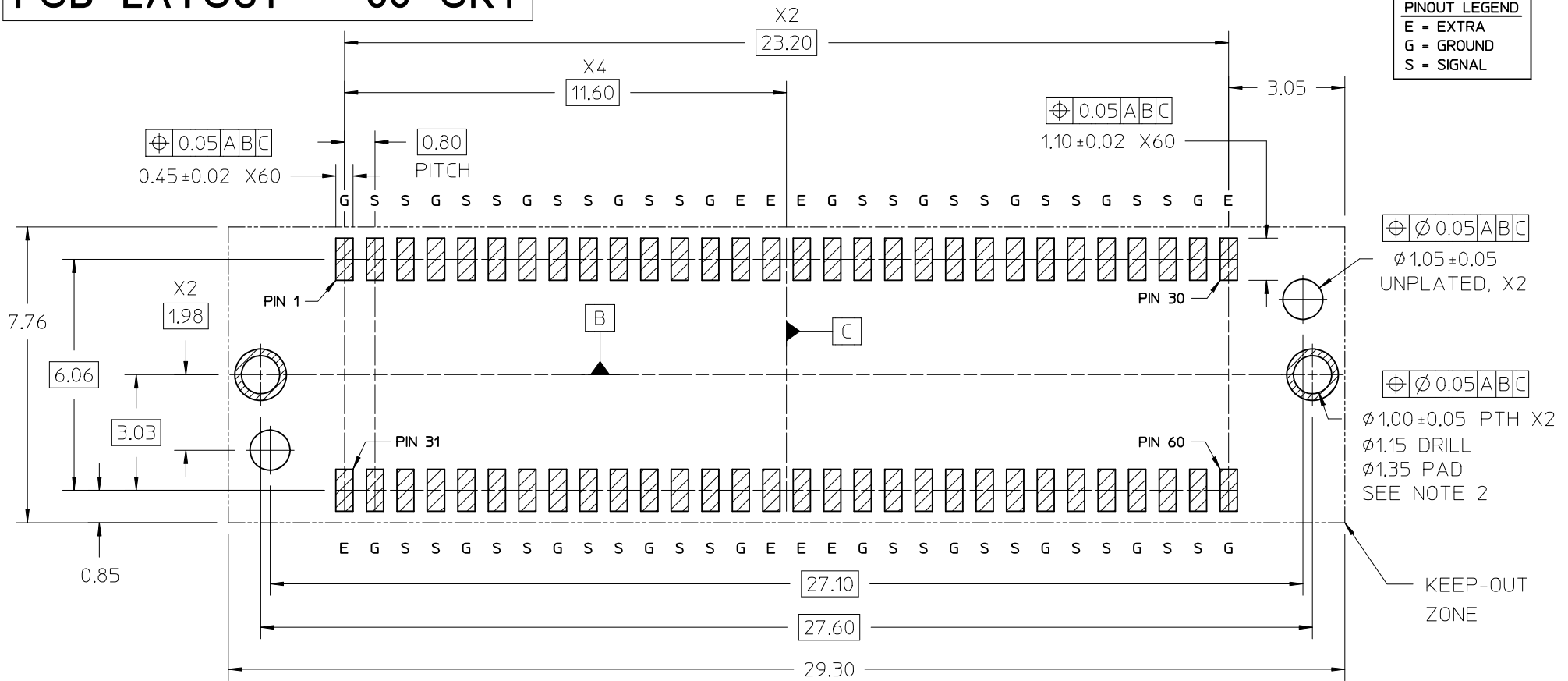
PINOUT LEGEND
 E = EXTRA
 G = GROUND
 S = SIGNAL

PCB LAYOUT (COMPONENT SIDE)
 SOLDER PASTE THICKNESS: 0.15 MIN
 DATUM [A] IS THE BOTTOM SURFACE OF THE PCB

- NOTES:
- PIN NUMBERING IS FOR REFERENCE ONLY. OTHER PIN NUMBERS WILL NOT AFFECT THE OPERATION OF THE CONNECTOR.
 - RETENTION NAIL MUST BE SOLDERED ONTO THE PCB FOR PROPER CONNECTOR FUNCTION.

SEE SHEET 1 EC NO: UCP2015-5331 DRAWN: JBINGHAM 2015/08/24 CHKD: DMCGOWAN 2015/08/24 APPR: DMCGOWAN 2015/09/18	QUALITY SYMBOLS ▽=0 ▽=0 ▽=0	GENERAL TOLERANCES (UNLESS SPECIFIED)		DIMENSION STYLE MM ONLY		SCALE 10:1	DESIGN UNITS METRIC	THIRD ANGLE PROJECTION																				
		<table border="1"> <thead> <tr> <th></th> <th>mm</th> <th>INCH</th> </tr> </thead> <tbody> <tr> <td>4 PLACES</td> <td>±---</td> <td>±---</td> </tr> <tr> <td>3 PLACES</td> <td>±---</td> <td>±---</td> </tr> <tr> <td>2 PLACES</td> <td>±0.13</td> <td>±---</td> </tr> <tr> <td>1 PLACE</td> <td>±0.25</td> <td>±---</td> </tr> <tr> <td>0 PLACE</td> <td>±---</td> <td>±---</td> </tr> </tbody> </table>			mm	INCH	4 PLACES	±---	±---	3 PLACES	±---	±---	2 PLACES	±0.13	±---	1 PLACE	±0.25	±---	0 PLACE	±---	±---	DRAWN BY JBINGHAM		DATE 2014/11/11	TITLE SPEEDSTACK RECEPTACLE ASSEMBLY SALES DRAWING			
			mm	INCH																								
		4 PLACES	±---	±---																								
3 PLACES	±---	±---																										
2 PLACES	±0.13	±---																										
1 PLACE	±0.25	±---																										
0 PLACE	±---	±---																										
APPROVED BY DMCGOWAN		DATE 2015/01/26		MATERIAL NO. SEE CHART				DOCUMENT NO. SD-171450-3000	SHEET NO. 3 OF 8																			
ANGLAR ±1/2° DRAFT WHERE APPLICABLE MUST REMAIN WITHIN DIMENSIONS		THIS DRAWING CONTAINS INFORMATION THAT IS PROPRIETARY TO MOLEX INCORPORATED AND SHOULD NOT BE USED WITHOUT WRITTEN PERMISSION																										

PCB LAYOUT - 60 CKT

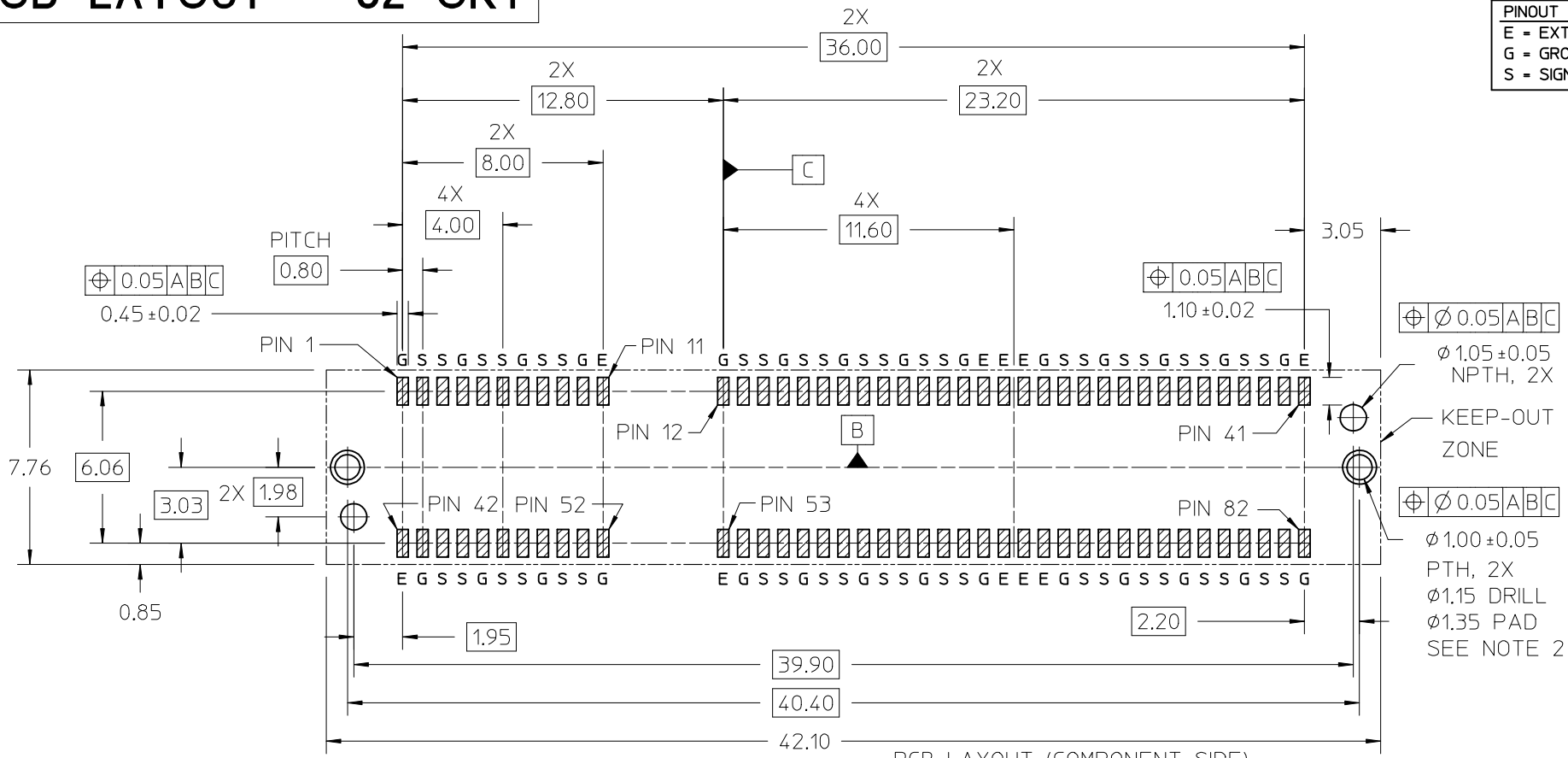


- NOTES:**
- PIN NUMBERING IS FOR REFERENCE ONLY. OTHER PIN NUMBERS WILL NOT AFFECT THE OPERATION OF THE CONNECTOR.
 - RETENTION NAIL MUST BE SOLDERED ONTO THE PCB FOR PROPER CONNECTOR FUNCTION.

SEE SHEET 1	EC NO: UCP2015-5331	QUALITY SYMBOLS	GENERAL TOLERANCES (UNLESS SPECIFIED)		DIMENSION STYLE		SCALE	DESIGN UNITS	THIRD ANGLE PROJECTION	
	DRAWN: JBINGHAM 2015/08/24	$\nabla F=0$ $\nabla E=0$ $\nabla F=0$	mm		MM ONLY		10:1	METRIC	SPEEDSTACK RECEPTACLE ASSEMBLY SALES DRAWING molex	
	CHKD: DMCGOWAN 2015/08/24		4 PLACES	± ---	± ---	DRAWN BY	DATE	TITLE		
	APPR: DMCGOWAN 2015/09/18		3 PLACES	± ---	± ---	CHECKED BY	DATE			
REV	2 PLACES		± 0.13	± ---	APPROVED BY	DATE				
		1 PLACE	± 0.25	± ---	DMCGOWAN	2015/01/26			DOCUMENT NO.	SHEET NO.
		0 PLACE	± ---	± ---					SD-171450-3000	4 OF 8
		ANGULAR ± 1/2°			MATERIAL NO.					
		DRAFT WHERE APPLICABLE			SEE CHART					
		MUST REMAIN WITHIN DIMENSIONS			SIZE B					
		THIS DRAWING CONTAINS INFORMATION THAT IS PROPRIETARY TO MOLEX INCORPORATED AND SHOULD NOT BE USED WITHOUT WRITTEN PERMISSION								

PCB LAYOUT - 82 CKT

PINOUT LEGEND	
E	= EXTRA
G	= GROUND
S	= SIGNAL



PCB LAYOUT (COMPONENT SIDE)
 SOLDER PASTE THICKNESS: 0.15 MIN
 DATUM [A] IS THE BOTTOM SURFACE OF THE PCB

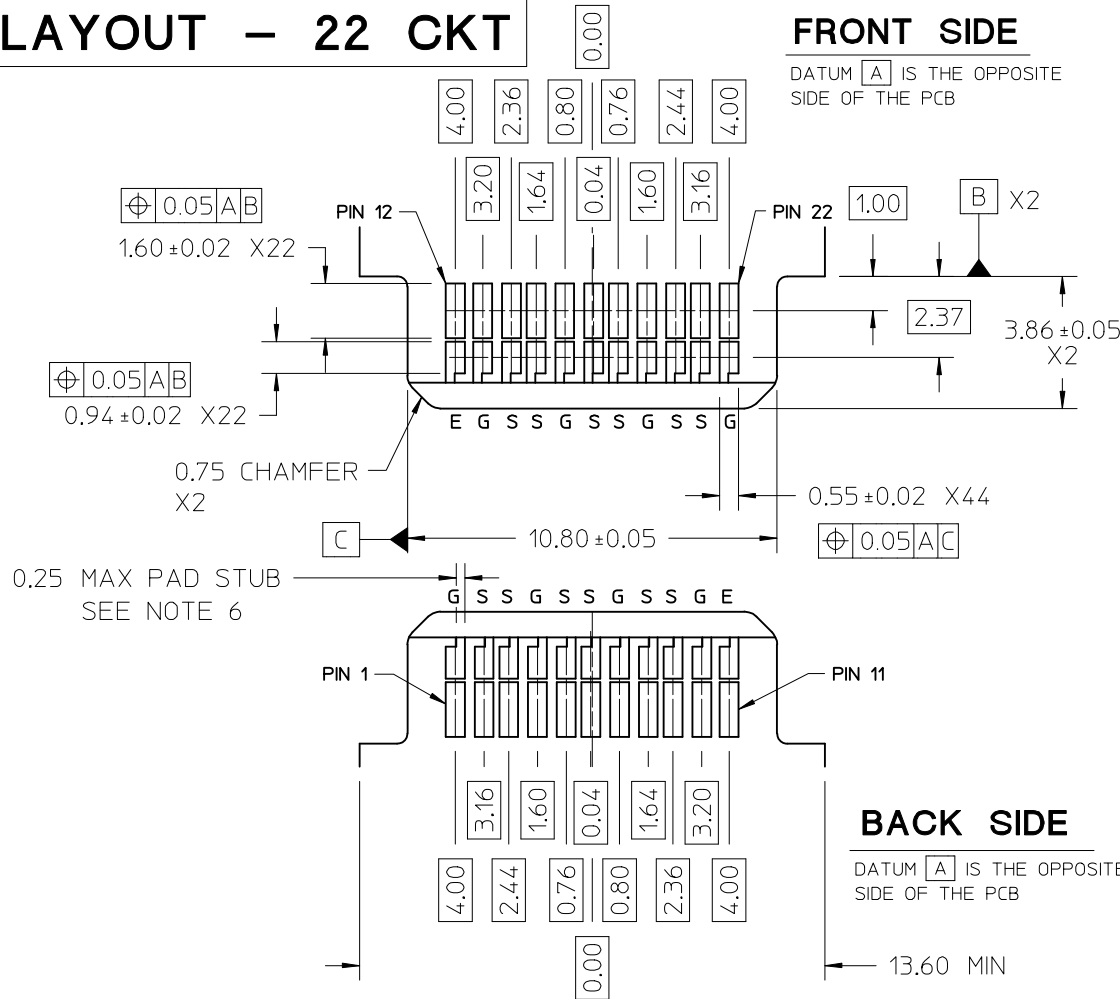
NOTES:
 1. PIN NUMBERING IS FOR REFERENCE ONLY.
 OTHER PIN NUMBERS WILL NOT AFFECT THE
 OPERATION OF THE CONNECTOR.
 2. RETENTION NAIL MUST BE SOLDERED ONTO THE
 PCB FOR PROPER CONNECTOR FUNCTION.

SEE SHEET 1 EC NO: UCP2015-5331 DRAWN: JBINGHAM 2015/08/24 CHKD: DMCOWAN 2015/08/24 APPR: DMCOWAN 2015/09/18	QUALITY SYMBOLS ▽=0 ▽=0 ▽=0	GENERAL TOLERANCES (UNLESS SPECIFIED)	DIMENSION STYLE MM ONLY	SCALE 6:1	DESIGN UNITS METRIC	THIRD ANGLE PROJECTION
		mm INCH	DRAWN BY DATE JBINGHAM 2014/11/11	TITLE SPEEDSTACK RECEPTACLE ASSEMBLY SALES DRAWING molex	DOCUMENT NO. SD-171450-3000	SHEET NO. 5 OF 8
		4 PLACES ± --- ± ---	CHECKED BY DATE DMCOWAN 2014/11/11			
		3 PLACES ± --- ± ---	APPROVED BY DATE DMCOWAN 2015/01/26			
2 PLACES ± 0.13 ± ---	MATERIAL NO. SEE CHART					
ANGULAR ±1/2° DRAFT WHERE APPLICABLE MUST REMAIN WITHIN DIMENSIONS		THIS DRAWING CONTAINS INFORMATION THAT IS PROPRIETARY TO MOLEX INCORPORATED AND SHOULD NOT BE USED WITHOUT WRITTEN PERMISSION				

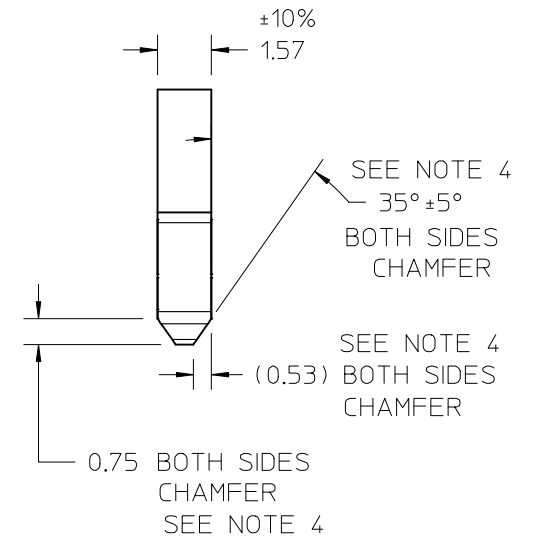
EDGECARD LAYOUT - 22 CKT

FRONT SIDE

DATUM **A** IS THE OPPOSITE SIDE OF THE PCB

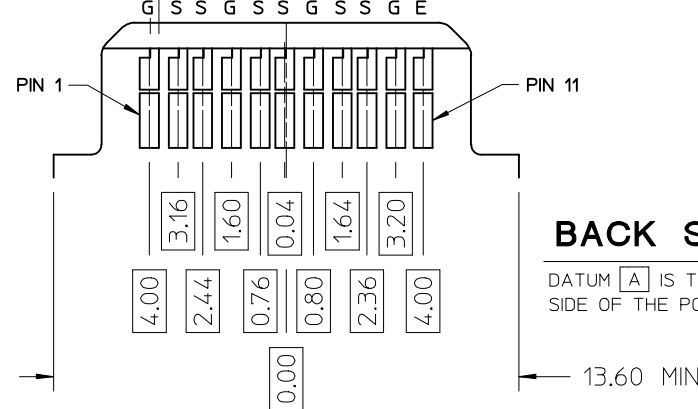


OVER CONTACT PADS



BACK SIDE

DATUM **A** IS THE OPPOSITE SIDE OF THE PCB



PINOUT LEGEND

- E = EXTRA
- G = GROUND
- S = SIGNAL

- NOTES:
- PIN NUMBERING IS FOR REFERENCE ONLY. OTHER PIN NUMBERS WILL NOT AFFECT THE OPERATION OF THE CONNECTOR.
 - EDGE CARD SHOULDERS STOP ON RECEPTACLE SHOULDERS. EDGE CARD BOTTOM DOES NOT CONTACT RECEPTACLE PCB.
 - PAD SET BACK FROM CHAMFER ENOUGH TO ACCOMMODATE LARGEST CHAMFER WITHOUT DAMAGE TO PAD EDGE.
 - CHAMFER DEPTH SHOULD BE AS LARGE AS PRACTICAL TO ENSURE CORRECT MATING TO THE RECEPTACLE.
 - ALL CHAMFERED EDGES SHOULD BE ROUNDED WHERE POSSIBLE.
 - INTERNAL PLATING BRIDGES ARE PREFERRED TO ELIMINATE PAD STUB.

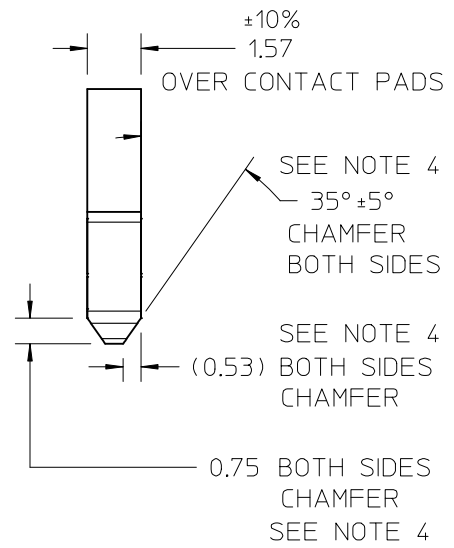
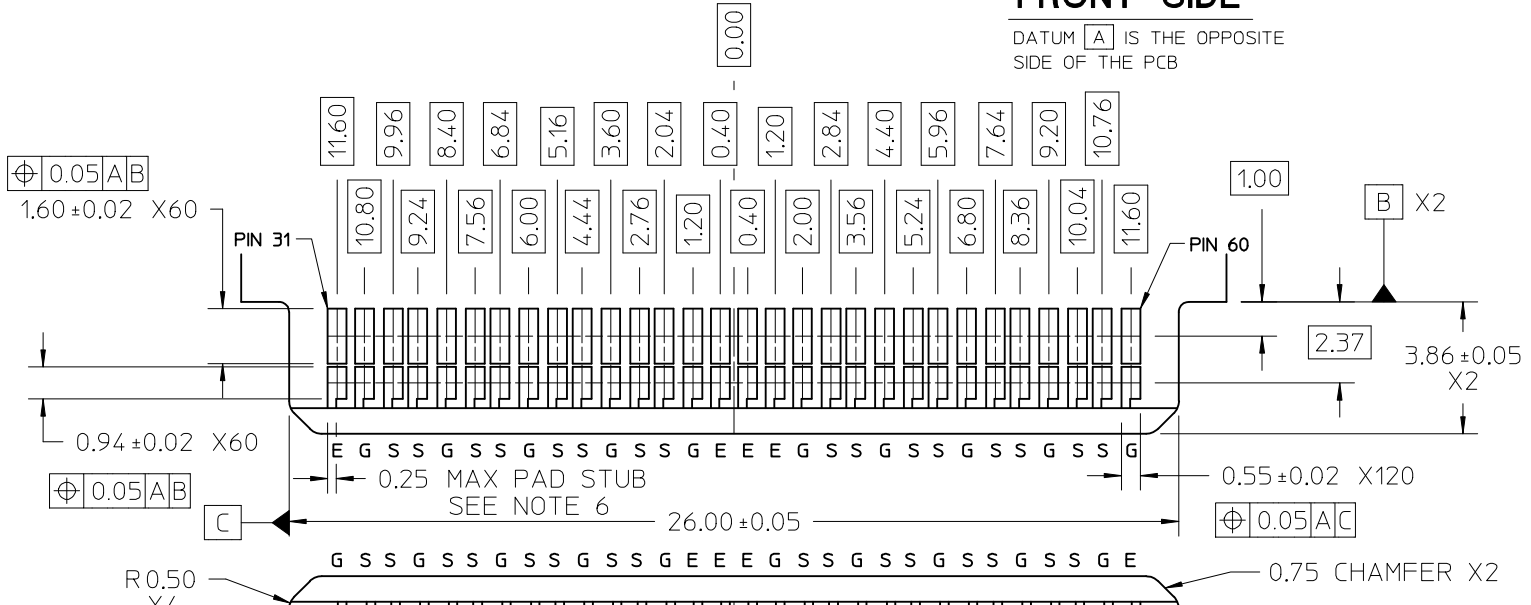
SEE SHEET 1 EC NO: UCP2015-5331 DRAWN: JBINGHAM 2015/08/24 CHKD: DMCGOWAN 2015/08/24 APPR: DMCGOWAN 2015/09/18	QUALITY SYMBOLS ▽=0 ▽=0 ▽=0	GENERAL TOLERANCES (UNLESS SPECIFIED)		DIMENSION STYLE		SCALE	DESIGN UNITS	THIRD ANGLE PROJECTION			
				MM ONLY		7:1	METRIC				
				mm	INCH	DRAWN BY	DATE	TITLE			
				4 PLACES ± --- ± ---		JBINGHAM	2014/11/11	SPEEDSTACK RECEPTACLE ASSEMBLY SALES DRAWING			
		3 PLACES ± --- ± ---		CHECKED BY	DATE						
		2 PLACES ± 0.13 ± ---		DMCGOWAN	2014/11/11	molex					
		1 PLACE ± 0.25 ± ---		APPROVED BY	DATE						
		0 PLACE ± --- ± ---		DMCGOWAN	2015/01/26	DOCUMENT NO.		SHEET NO.			
		ANGULAR ± 1/2°		MATERIAL NO.		SD-171450-3000		6 OF 8			
		DRAFT WHERE APPLICABLE MUST REMAIN WITHIN DIMENSIONS		SEE CHART		THIS DRAWING CONTAINS INFORMATION THAT IS PROPRIETARY TO MOLEX INCORPORATED AND SHOULD NOT BE USED WITHOUT WRITTEN PERMISSION					

EDGE CARD LAYOUT - 60 CKT

PINOUT LEGEND	
E	= EXTRA
G	= GROUND
S	= SIGNAL

FRONT SIDE

DATUM [A] IS THE OPPOSITE SIDE OF THE PCB



BACK SIDE

DATUM [A] IS THE OPPOSITE SIDE OF THE PCB

- NOTES:
- PIN NUMBERING IS FOR REFERENCE ONLY. OTHER PIN NUMBERS WILL NOT AFFECT THE OPERATION OF THE CONNECTOR.
 - EDGE CARD SHOULDERS STOP ON RECEPTACLE SHOULDERS. EDGE CARD BOTTOM DOES NOT CONTACT RECEPTACLE PCB.
 - PAD SET BACK FROM CHAMFER ENOUGH TO ACCOMMODATE LARGEST CHAMFER WITHOUT DAMAGE TO PAD EDGE.
 - CHAMFER DEPTH SHOULD BE AS LARGE AS PRACTICAL TO ENSURE CORRECT MATING TO THE RECEPTACLE.
 - ALL CHAMFERED EDGES SHOULD BE ROUNDED WHERE POSSIBLE.
 - INTERNAL PLATING BRIDGES ARE PREFERRED TO ELIMINATE PAD STUB.

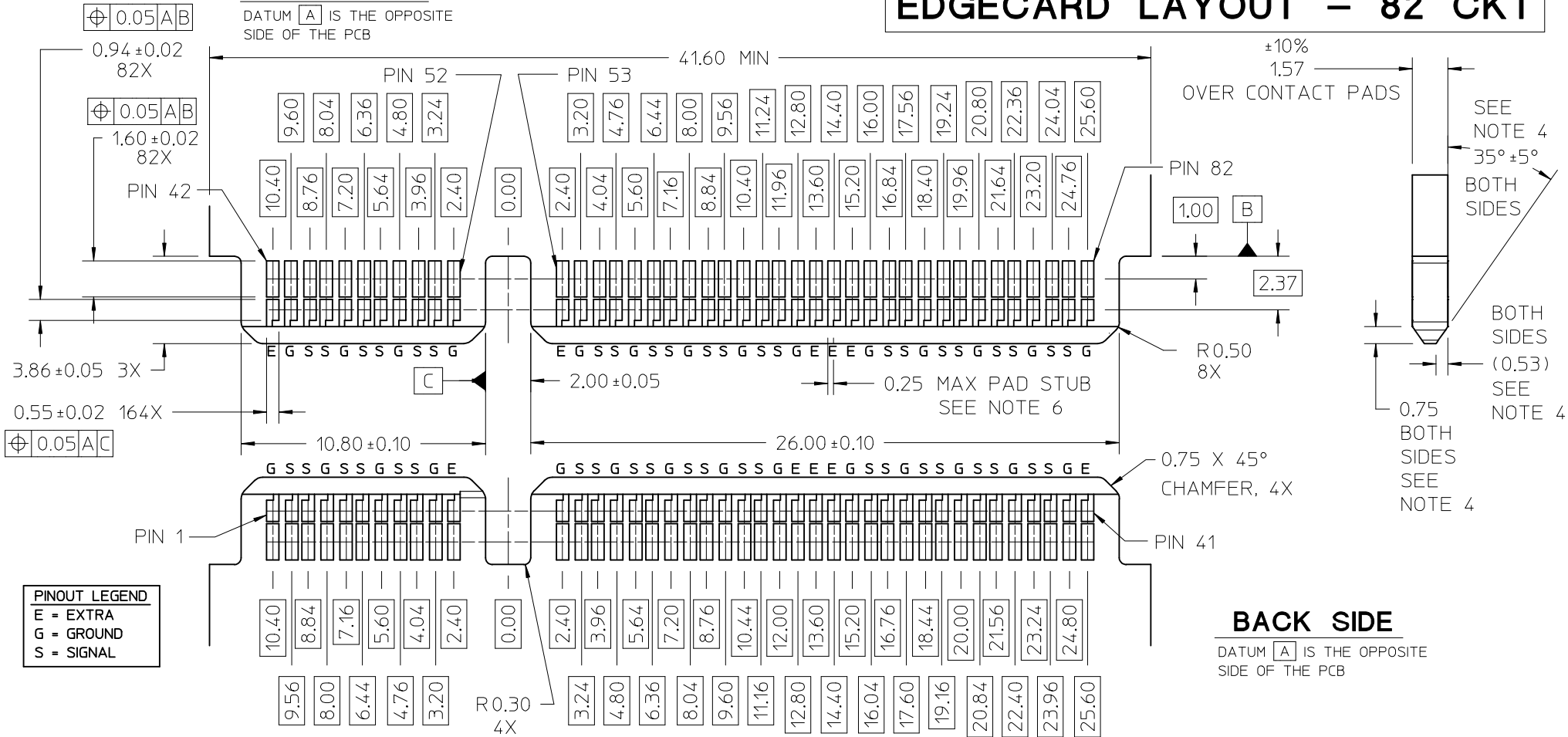
SEE SHEET 1 EC NO: UCP2015-5331 DRWN: JBINGHAM 2015/08/24 CHKD: DMCGOWAN 2015/08/24 APPR: DMCGOWAN 2015/09/18	QUALITY SYMBOLS	GENERAL TOLERANCES (UNLESS SPECIFIED)	DIMENSION STYLE	SCALE	DESIGN UNITS	THIRD ANGLE PROJECTION
	$\nabla = 0$ $\nabla = 0$ $\nabla = 0$	mm INCH 4 PLACES ± --- ± --- 3 PLACES ± --- ± --- 2 PLACES ± 0.13 ± --- 1 PLACE ± 0.25 ± --- 0 PLACE ± --- ± ---	MM ONLY	7:1	METRIC	THIRD ANGLE PROJECTION
	DESCRIPTION	ANGULAR ± 1/2° DRAFT WHERE APPLICABLE MUST REMAIN WITHIN DIMENSIONS	DRAWN BY DATE JBINGHAM 2014/11/11 CHECKED BY DATE DMCGOWAN 2014/11/11 APPROVED BY DATE DMCGOWAN 2015/01/26	TITLE	SPEEDSTACK RECEPTACLE ASSEMBLY SALES DRAWING	
	REV		MATERIAL NO.	SEE CHART	DOCUMENT NO.	SD-171450-3000 SHEET NO. 7 OF 8

THIS DRAWING CONTAINS INFORMATION THAT IS PROPRIETARY TO MOLEX INCORPORATED AND SHOULD NOT BE USED WITHOUT WRITTEN PERMISSION

EDGECARD LAYOUT – 82 CKT

FRONT SIDE

DATUM **A** IS THE OPPOSITE SIDE OF THE PCB



BACK SIDE

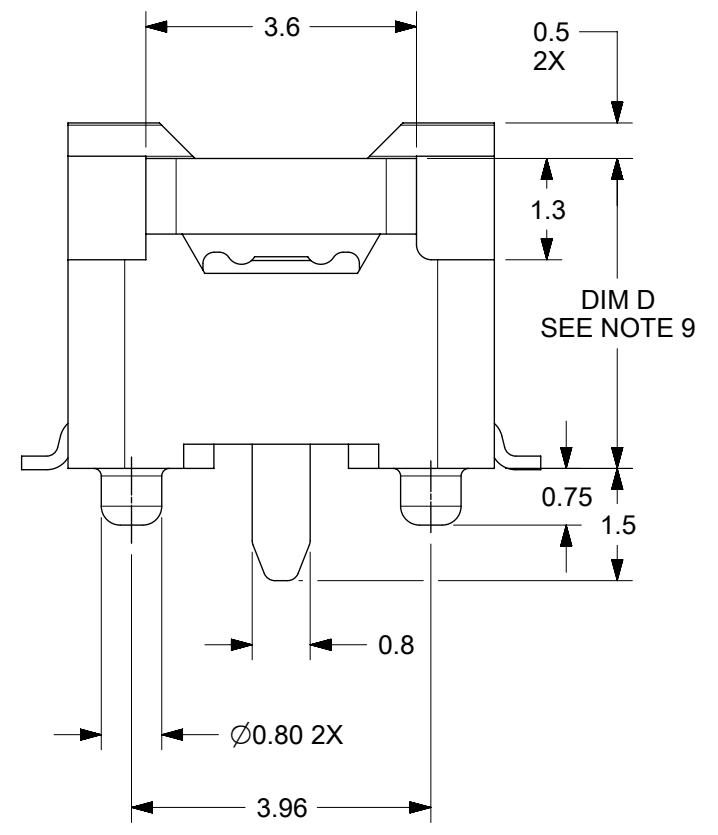
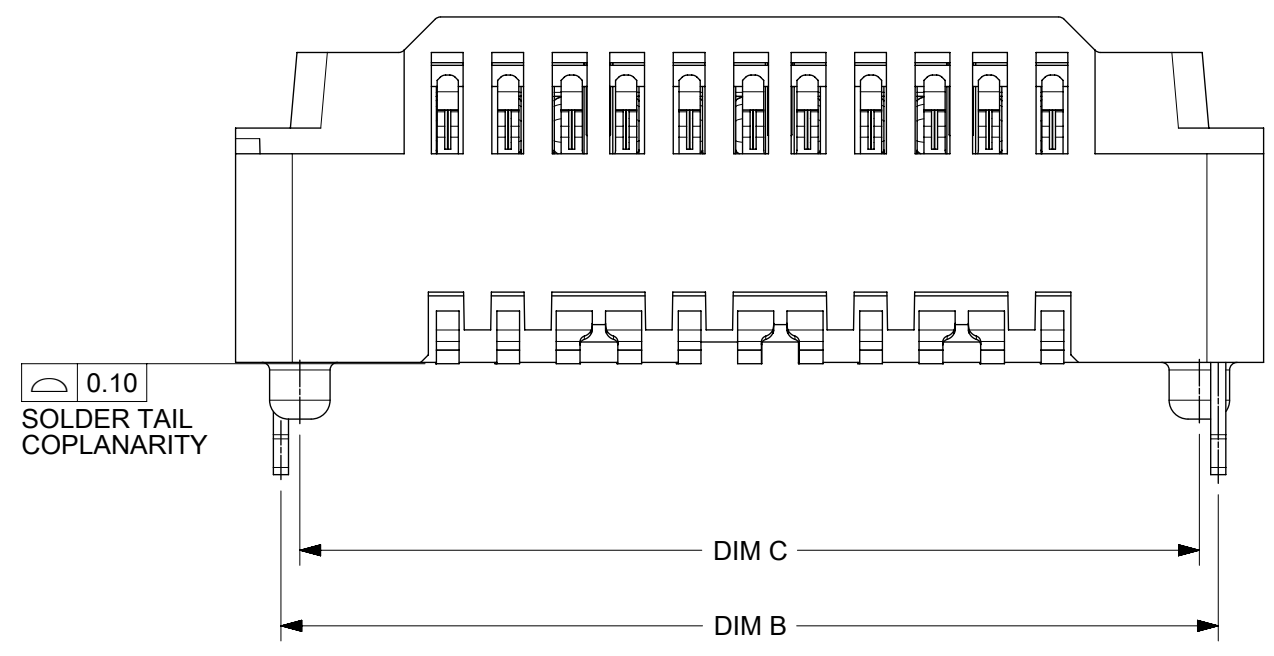
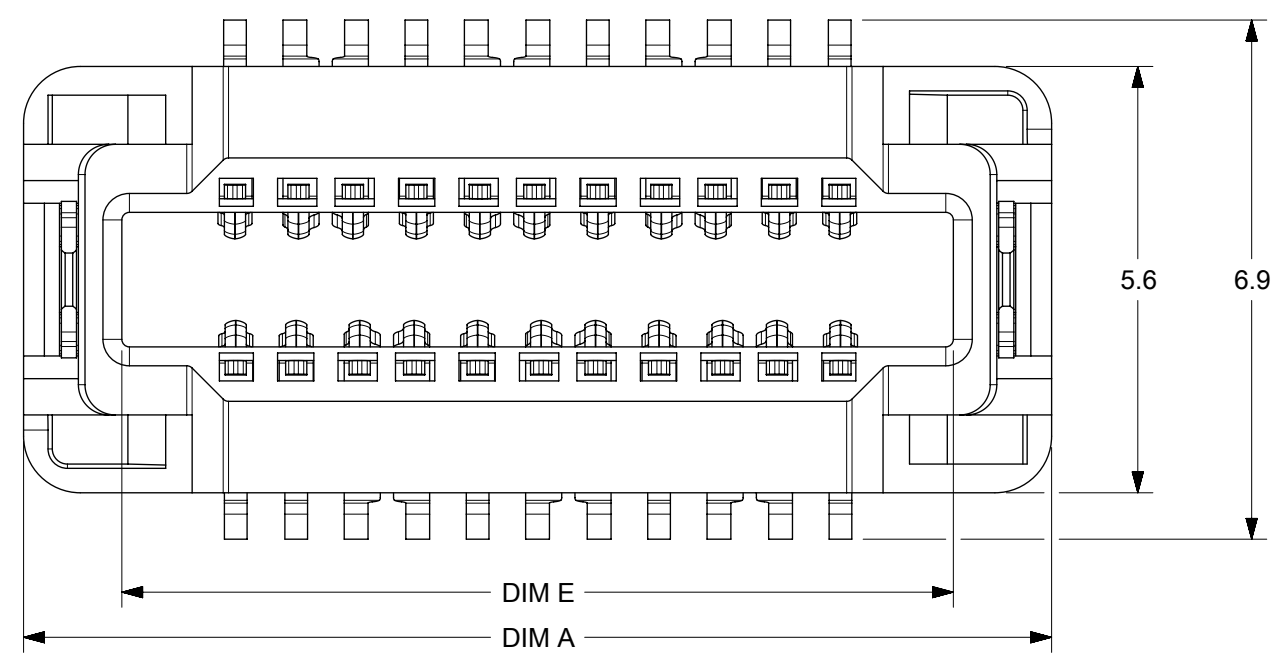
DATUM **A** IS THE OPPOSITE SIDE OF THE PCB

NOTES:

- PIN NUMBERING IS FOR REFERENCE ONLY. OTHER PIN NUMBERS WILL NOT AFFECT THE OPERATION OF THE CONNECTOR.
- EDGE CARD SHOULD STOP ON RECEPTACLE SHOULDERS. EDGE CARD BOTTOM DOES NOT CONTACT RECEPTACLE PCB.
- PAD SET BACK FROM CHAMFER ENOUGH TO ACCOMMODATE LARGEST CHAMFER WITHOUT DAMAGE TO PAD EDGE.
- CHAMFER DEPTH SHOULD BE AS LARGE AS PRACTICAL TO ENSURE CORRECT MATING TO THE RECEPTACLE.
- ALL CHAMFERED EDGES SHOULD BE ROUNDED WHERE POSSIBLE.
- INTERNAL PLATING BRIDGES ARE PREFERRED TO ELIMINATE PAD STUB.

SEE SHEET 1 EC NO: UCP2015-5331 DRAWN: JB INGHAM 2015/08/24 CHKD: DMCGOWAN 2015/08/24 APPR: DMCGOWAN 2015/09/18	QUALITY SYMBOLS ▽=0 ▽=0 ▽=0	GENERAL TOLERANCES (UNLESS SPECIFIED)		DIMENSION STYLE MM ONLY		SCALE 6:1	DESIGN UNITS METRIC	THIRD ANGLE PROJECTION	
		mm		INCH		DRAWN BY JB INGHAM		DATE 2014/11/11	
		4 PLACES ± ---		± ---		CHECKED BY DMCGOWAN		DATE 2014/11/11	
		3 PLACES ± ---		± ---		APPROVED BY DMCGOWAN		DATE 2015/01/26	
2 PLACES ± 0.13		± ---		MATERIAL NO.		DOCUMENT NO. SD-171450-3000		SHEET NO. 8 OF 8	
1 PLACE ± 0.25		± ---		SEE CHART		THIS DRAWING CONTAINS INFORMATION THAT IS PROPRIETARY TO MOLEX INCORPORATED AND SHOULD NOT BE USED WITHOUT WRITTEN PERMISSION			
0 PLACE ± ---		± ---		ANGULAR ± 1/2° DRAFT WHERE APPLICABLE MUST REMAIN WITHIN DIMENSIONS					

PART NUMBER	CKT SIZE	DIFF PAIRS	SPARE CKTS	DIM A	DIM B	DIM C	DIM E	DIM D
171450-5102	22	6	2	13.6	12.40	11.90	11.0	4.10
171450-5105	60	16	8	28.8	27.60	27.10	26.2	3.10
171450-5106								4.10
171450-5114	82	22	10	41.6	40.40	39.90	11.0/ 26.2	4.10



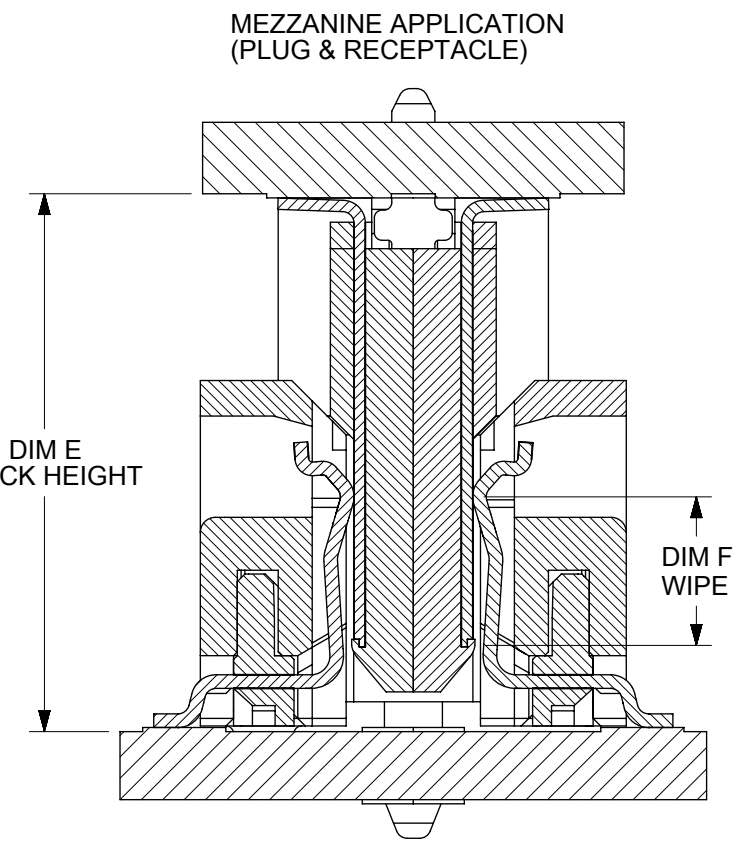
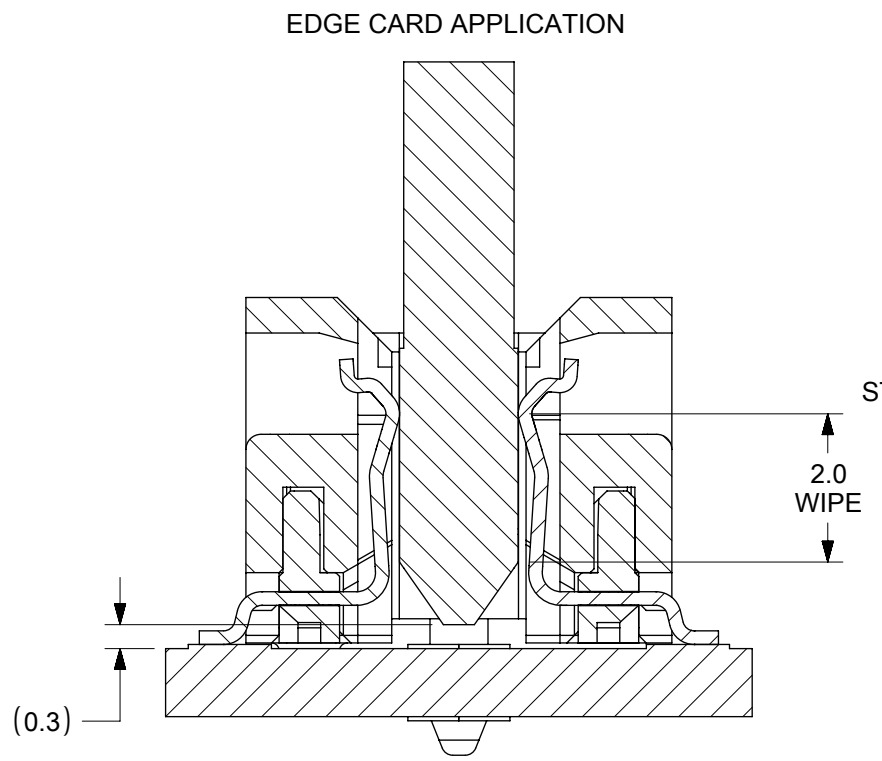
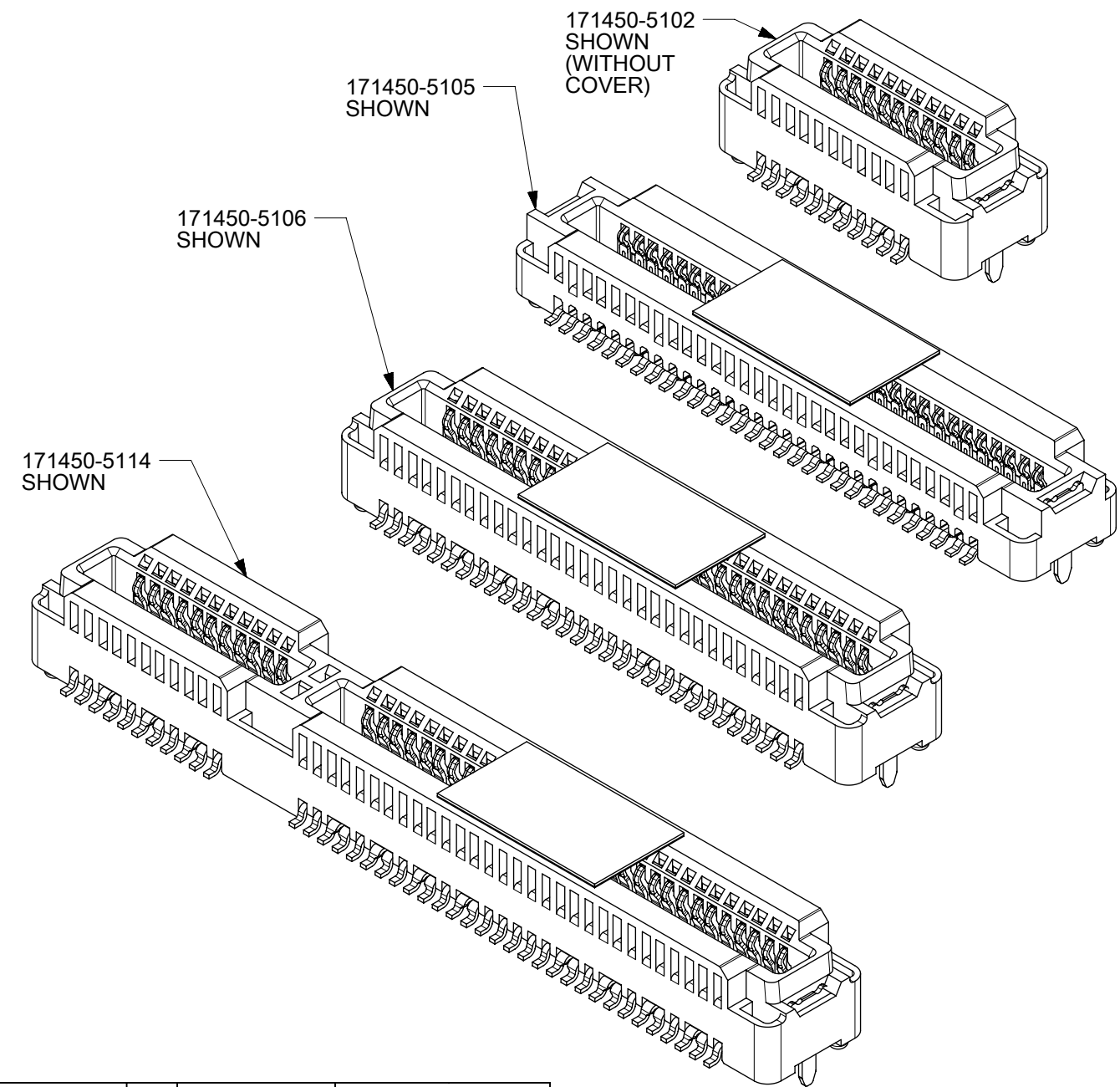
- NOTES:
1. MATERIALS: HOUSING: LCP, UL94V-0, BLACK
CONTACTS: HIGH PERFORMANCE COPPER ALLOY
 2. FINISH: 0.76 μm MIN SELECT GOLD IN CONTACT AREA,
SELECT MATTE TIN IN TAIL AREA, OVERALL NICKEL.
 3. PRODUCT SPECIFICATION: PS-171446-0001
 4. PACKAGING SPECIFICATION: PK-70873-6002
 5. MATES WITH SPEEDSTACK PLUGS: 171446 & 171810
 6. APPLICATION SPECIFICATION: AS-171450-9999
 7. COSMETIC SPECIFICATION: PS-45499-002 CLASS B
 8. PART STATUS: CONTACT MOLEX
 9. DIM D ON THIS DRAWING PLUS DIM D ON DRAWING # SD-171446-1000
EQUALS THE SYSTEM MATED STACK HEIGHT
 10. PARTS SHIPPED WITH PICK AND PLACE COVERS.

THIS DRAWING CONTAINS INFORMATION THAT IS PROPRIETARY TO MOLEX ELECTRONIC TECHNOLOGIES, LLC AND SHOULD NOT BE USED WITHOUT WRITTEN PERMISSION

DIMENSION UNITS mm	SCALE 10:1	CURRENT REV DESC: ADD -5105		molex		
GENERAL TOLERANCES (UNLESS SPECIFIED)		EC NO: 623611				
ANGULAR TOL ± 0.5°	4 PLACES ±	DRWN: JBINGHAM 2019/09/03		PRODUCT CUSTOMER DRAWING		
3 PLACES ±	2 PLACES ± 0.13	CHK'D: KLANG 2019/09/06		DOCUMENT NUMBER		
1 PLACE ± 0.25	0 PLACES ±	APPR: KLANG 2019/09/06		SD-171450-5000		
INITIAL REVISION:		DRWN: JBINGHAM 2016/08/25		DOC TYPE	DOC PART	REVISION
DRAFT WHERE APPLICABLE MUST REMAIN WITHIN DIMENSIONS		APPR: JBINGHAM 2016/09/07		PSD	001	B
THIRD ANGLE PROJECTION		DRAWING	SERIES	MATERIAL NUMBER	CUSTOMER	SHEET NUMBER
B-SIZE		171450	SEE CHART	GENERAL MARKET	1 OF 8	

MEZZANINE (PLUG & RECEPTACLE) STACKING CHART

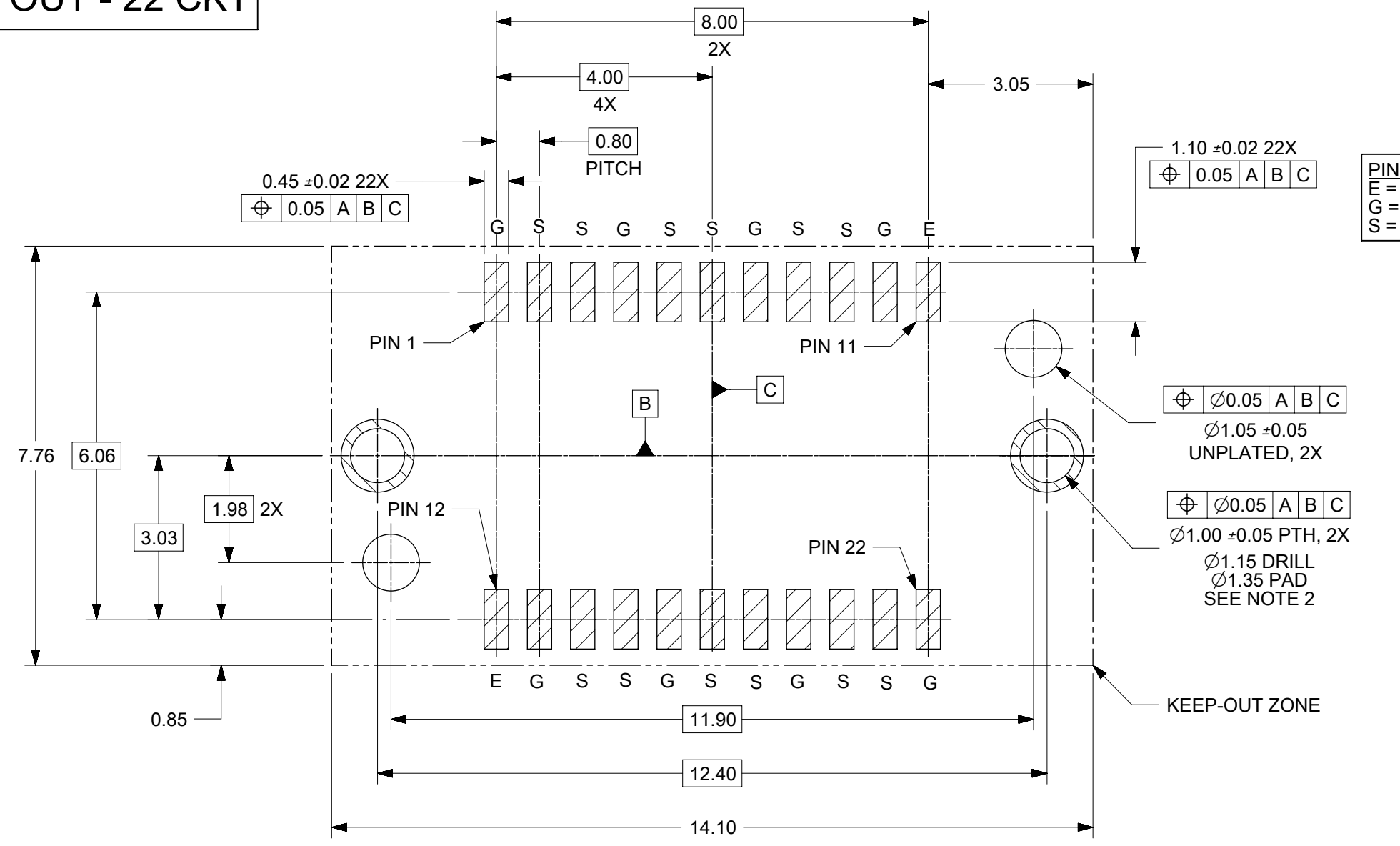
RECEPTACLE OPTIONS		PLUG OPTIONS (1mm WIPE)				PLUG OPTIONS (2mm WIPE)				
		HEIGHT	1mm	2mm	3mm	4mm	1mm	2mm	3mm	4mm
22 CKT	171446-1101	171446-1102	171446-1103	171446-1104	171446-1105	171446-1106	171446-1107	171446-1108		
60 CKT	171446-1109	171446-1110	171446-1111	171446-1112	171446-1113	171446-1114	171446-1115	171446-1116		
60 CKT	171450-5105	3mm	4/1	5/1	6/1	7/1	N/A			
22 CKT	171450-5102	4mm	5/1	6/1	7/1	8/1	5/2	6/2	7/2	8/2
60 CKT	171450-5106									
82 CKT	171450-5114									
CIRCUITS	MOLEX P/N	HEIGHT	STACK HEIGHT (DIM E)/WIPE (DIM F)							



THIS DRAWING CONTAINS INFORMATION THAT IS PROPRIETARY TO MOLEX ELECTRONIC TECHNOLOGIES, LLC AND SHOULD NOT BE USED WITHOUT WRITTEN PERMISSION

DIMENSION UNITS mm	SCALE 10:1	CURRENT REV DESC: ADD -5105				
GENERAL TOLERANCES (UNLESS SPECIFIED)		EC NO: 623611	2019/09/03			
ANGULAR TOL	± 0.5°	DRWN: JBINGHAM	2019/09/06	PRODUCT CUSTOMER DRAWING		
4 PLACES	±	CHK'D: KLANG	2019/09/06	DOCUMENT NUMBER		
3 PLACES	±	APPR: KLANG	2019/09/06	SD-171450-5000		
2 PLACES	± 0.13	INITIAL REVISION:		DOC TYPE	DOC PART	REVISION
1 PLACE	± 0.25	DRWN: JBINGHAM	2016/08/25	PSD	001	B
0 PLACES	±	APPR: JBINGHAM	2016/09/07	SHEET NUMBER		
DRAFT WHERE APPLICABLE MUST REMAIN WITHIN DIMENSIONS		THIRD ANGLE PROJECTION	DRAWING	SERIES	MATERIAL NUMBER	CUSTOMER
			B-SIZE	171450	SEE CHART	GENERAL MARKET
						2 OF 8

PCB LAYOUT - 22 CKT



PINOUT LEGEND
 E = EXTRA
 G = GROUND
 S = SIGNAL

⊕ 0.05 A B C
 Ø1.05 ±0.05
 UNPLATED, 2X

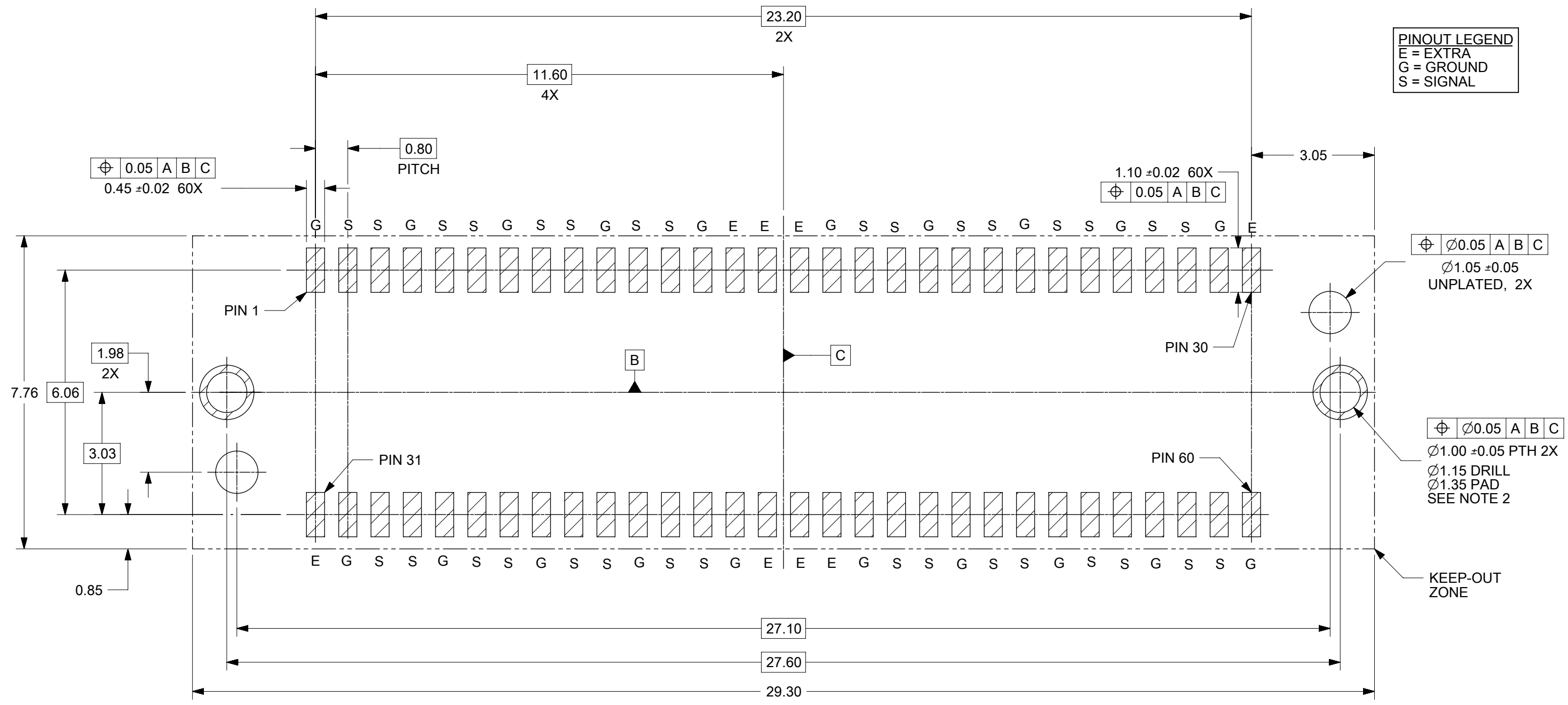
⊕ 0.05 A B C
 Ø1.00 ±0.05 PTH, 2X
 Ø1.15 DRILL
 Ø1.35 PAD
 SEE NOTE 2

PCB LAYOUT (COMPONENT SIDE)
 SOLDER PASTE THICKNESS: 0.15 MIN
 DATUM **A** IS THE BOTTOM SURFACE OF THE PCB

- NOTES:
 1. PIN NUMBERING IS FOR REFERENCE ONLY. OTHER PIN NUMBERS WILL NOT AFFECT THE OPERATION OF THE CONNECTOR.
 2. RETENTION NAIL MUST BE SOLDERED ONTO THE PCB FOR PROPER CONNECTOR FUNCTION.

THIS DRAWING CONTAINS INFORMATION THAT IS PROPRIETARY TO MOLEX ELECTRONIC TECHNOLOGIES, LLC AND SHOULD NOT BE USED WITHOUT WRITTEN PERMISSION										
DIMENSION UNITS	SCALE	CURRENT REV DESC: ADD -5105								
mm	10:1	<p>SPEEDSTACK RECEPTACLE ASSEMBLY SALES DRAWING</p> <p>PRODUCT CUSTOMER DRAWING</p>								
GENERAL TOLERANCES (UNLESS SPECIFIED)										
ANGULAR TOL	± 0.5°									
4 PLACES	±									
3 PLACES	±									
2 PLACES	± 0.13	EC NO: 623611	2019/09/03		2019/09/06		2019/09/06			
1 PLACE	± 0.25	DRWN: JBINGHAM	2016/08/25		2016/09/07		2016/09/07			
0 PLACES	±	CHK'D: KLANG	2019/09/06		2019/09/06		2019/09/06			
DRAFT WHERE APPLICABLE MUST REMAIN WITHIN DIMENSIONS		THIRD ANGLE PROJECTION	DRAWING	SERIES	MATERIAL NUMBER	CUSTOMER	DOCUMENT NUMBER	DOC TYPE	DOC PART	REVISION
			B-SIZE	171450	SEE CHART	GENERAL MARKET	SD-171450-5000	PSD	001	B
										SHEET NUMBER
										3 OF 8

PCB LAYOUT - 60 CKT



PINOUT LEGEND
 E = EXTRA
 G = GROUND
 S = SIGNAL

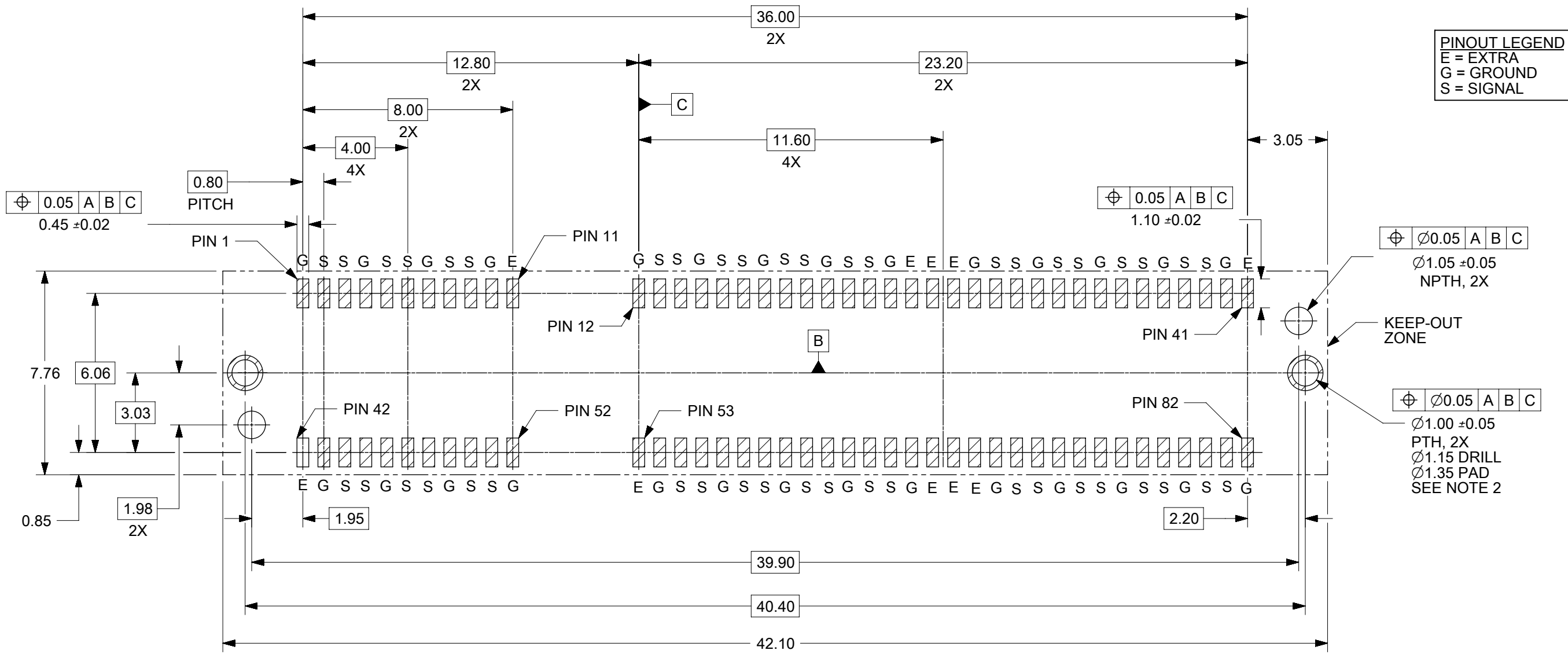
PCB LAYOUT (COMPONENT SIDE)
 SOLDER PASTE THICKNESS: 0.15 MIN
 DATUM **A** IS THE BOTTOM SURFACE OF THE PCB

NOTES:
 1. PIN NUMBERING IS FOR REFERENCE ONLY. OTHER PIN NUMBERS WILL NOT AFFECT THE OPERATION OF THE CONNECTOR.
 2. RETENTION NAIL MUST BE SOLDERED ONTO THE PCB FOR PROPER CONNECTOR FUNCTION.

THIS DRAWING CONTAINS INFORMATION THAT IS PROPRIETARY TO MOLEX ELECTRONIC TECHNOLOGIES, LLC AND SHOULD NOT BE USED WITHOUT WRITTEN PERMISSION									
DIMENSION UNITS	SCALE	CURRENT REV DESC: ADD -5105							
mm	10:1	molex SPEEDSTACK RECEPTACLE ASSEMBLY SALES DRAWING PRODUCT CUSTOMER DRAWING							
GENERAL TOLERANCES (UNLESS SPECIFIED)									
ANGULAR TOL	± 0.5°								
4 PLACES	±								
3 PLACES	±								
2 PLACES	± 0.13	EC NO: 623611	2019/09/03		DOCUMENT NUMBER		DOC TYPE	DOC PART	REVISION
1 PLACE	± 0.25	DRWN: JBINGHAM	2016/08/25		SD-171450-5000		PSD	001	B
0 PLACES	±	CHK'D: KLANG	2019/09/06		MATERIAL NUMBER		CUSTOMER		SHEET NUMBER
DRAFT WHERE APPLICABLE MUST REMAIN WITHIN DIMENSIONS		APPR: KLANG	2019/09/06		SEE CHART		GENERAL MARKET		4 OF 8
THIRD ANGLE PROJECTION		INITIAL REVISION:			SERIES				
		DRWN: JBINGHAM	2016/08/25		B-SIZE		171450		
		APPR: JBINGHAM	2016/09/07						

DOCUMENT STATUS	P1	RELEASE DATE	2019/09/06	02:51:33
-----------------	----	--------------	------------	----------

PCB LAYOUT - 82 CKT



PCB LAYOUT (COMPONENT SIDE)
 SOLDER PASTE THICKNESS: 0.15 MIN
 DATUM **A** IS THE BOTTOM SURFACE OF THE PCB

- NOTES:**
- PIN NUMBERING IS FOR REFERENCE ONLY. OTHER PIN NUMBERS WILL NOT AFFECT THE OPERATION OF THE CONNECTOR.
 - RETENTION NAIL MUST BE SOLDERED ONTO THE PCB FOR PROPER CONNECTOR FUNCTION.

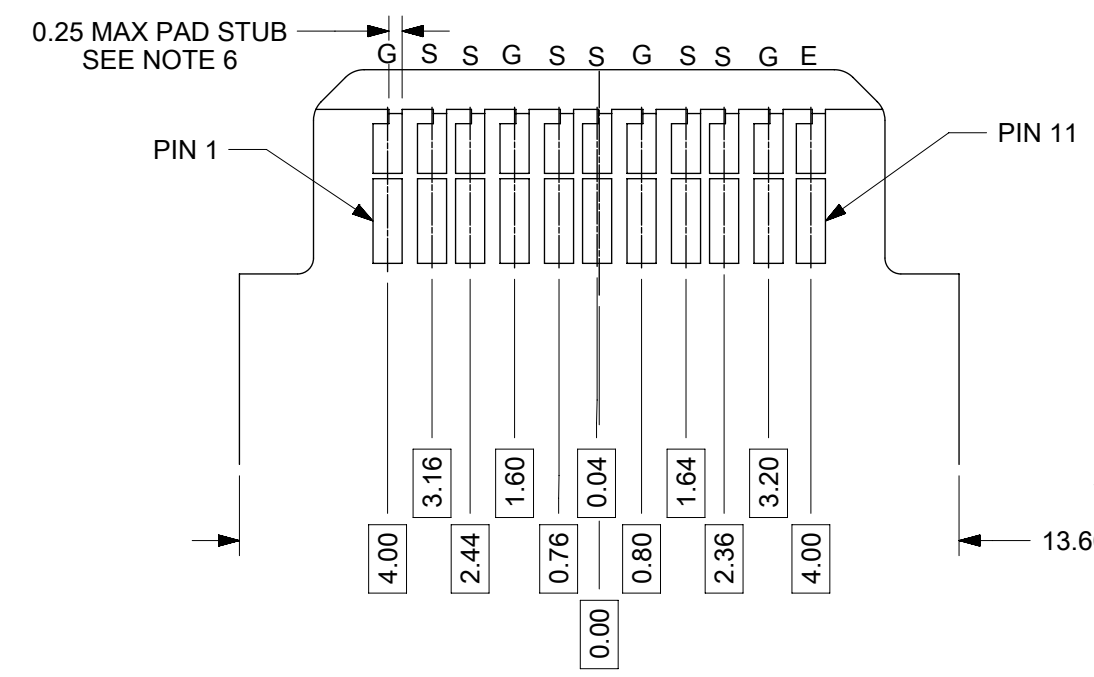
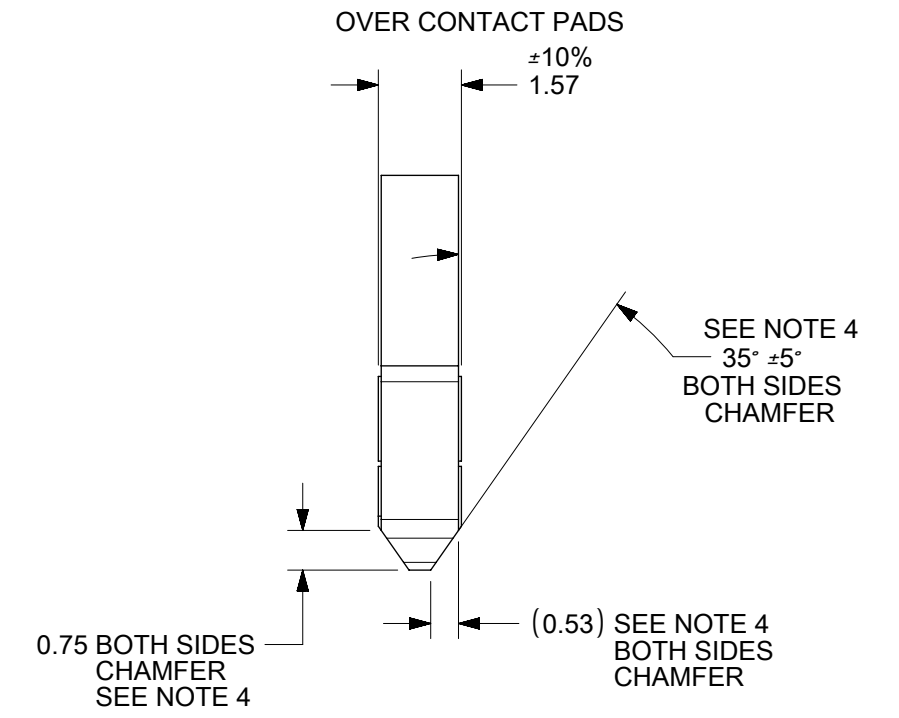
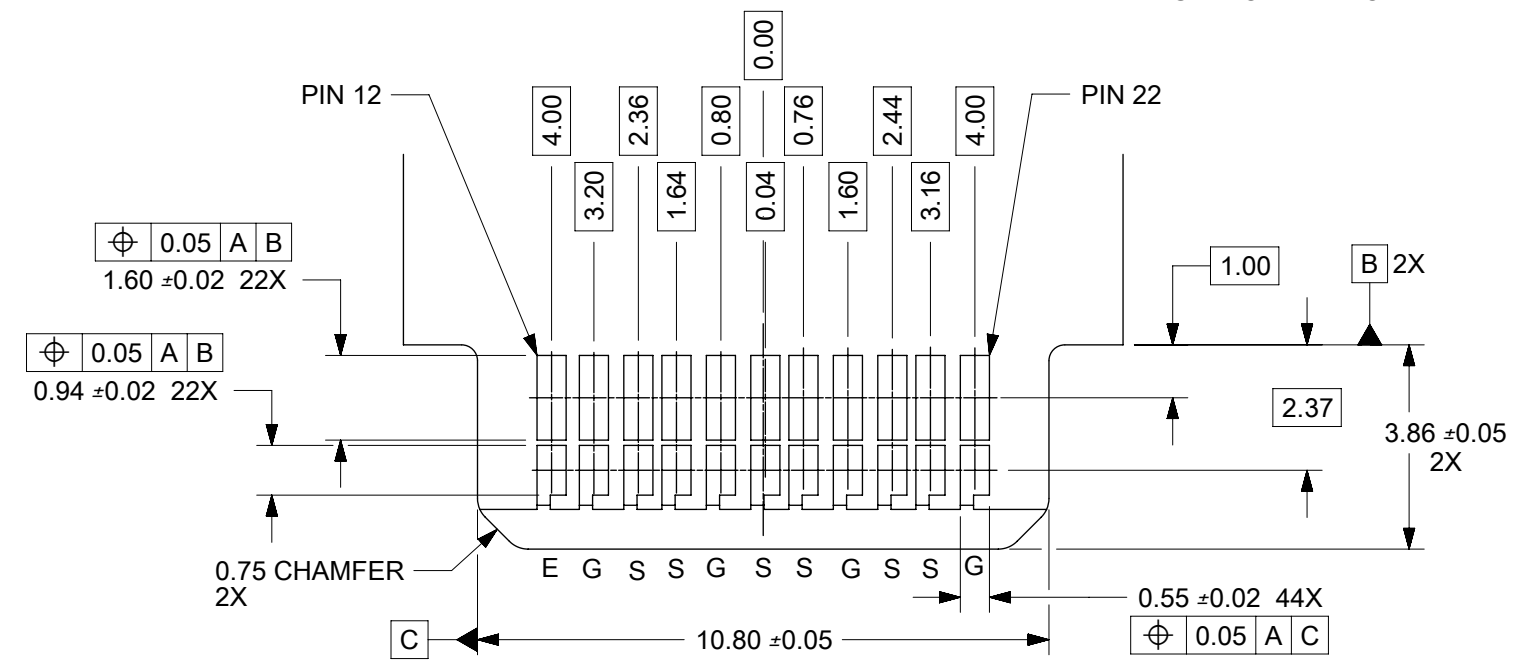
THIS DRAWING CONTAINS INFORMATION THAT IS PROPRIETARY TO MOLEX ELECTRONIC TECHNOLOGIES, LLC AND SHOULD NOT BE USED WITHOUT WRITTEN PERMISSION												
DIMENSION UNITS mm		SCALE 6:1		CURRENT REV DESC: ADD -5105						molex		
GENERAL TOLERANCES (UNLESS SPECIFIED)				EC NO: 623611								
ANGULAR TOL ± 0.5°				DRWN: JBINGHAM		2019/09/03		SPEEDSTACK RECEPTACLE ASSEMBLY SALES DRAWING				
4 PLACES ±				CHK'D: KLANG		2019/09/06		PRODUCT CUSTOMER DRAWING				
3 PLACES ±				APPR: KLANG		2019/09/06		DOCUMENT NUMBER				
2 PLACES ± 0.13				INITIAL REVISION:				SD-171450-5000		DOC TYPE	DOC PART	REVISION
1 PLACE ± 0.25				DRWN: JBINGHAM		2016/08/25		PSD	001	B		
0 PLACES ±				APPR: JBINGHAM		2016/09/07		MATERIAL NUMBER	CUSTOMER		SHEET NUMBER	
DRAFT WHERE APPLICABLE MUST REMAIN WITHIN DIMENSIONS		THIRD ANGLE PROJECTION		DRAWING	SERIES	MATERIAL NUMBER	CUSTOMER		SHEET NUMBER			
				B-SIZE	171450	SEE CHART	GENERAL MARKET		5 OF 8			

DOCUMENT STATUS	P1	RELEASE DATE	2019/09/06	02:51:33
-----------------	----	--------------	------------	----------

EDGECARD LAYOUT - 22 CKT

FRONT SIDE

DATUM **A** IS THE OPPOSITE SIDE OF THE PCB



BACK SIDE

DATUM **A** IS THE OPPOSITE SIDE OF THE PCB

PINOUT LEGEND
 E = EXTRA
 G = GROUND
 S = SIGNAL

- NOTES:**
- PIN NUMBERING IS FOR REFERENCE ONLY. OTHER PIN NUMBERS WILL NOT AFFECT THE OPERATION OF THE CONNECTOR.
 - EDGE CARD SHOULDERS STOP ON RECEPTACLE SHOULDERS. EDGE CARD BOTTOM DOES NOT CONTACT RECEPTACLE PCB.
 - PAD SET BACK FROM CHAMFER ENOUGH TO ACCOMMODATE LARGEST CHAMFER WITHOUT DAMAGE TO PAD EDGE.
 - CHAMFER DEPTH SHOULD BE AS LARGE AS PRACTICAL TO ENSURE CORRECT MATING TO THE RECEPTACLE.
 - ALL CHAMFERED EDGES SHOULD BE ROUNDED WHERE POSSIBLE.
 - INTERNAL PLATING BRIDGES ARE PREFERRED TO ELIMINATE PAD STUB.

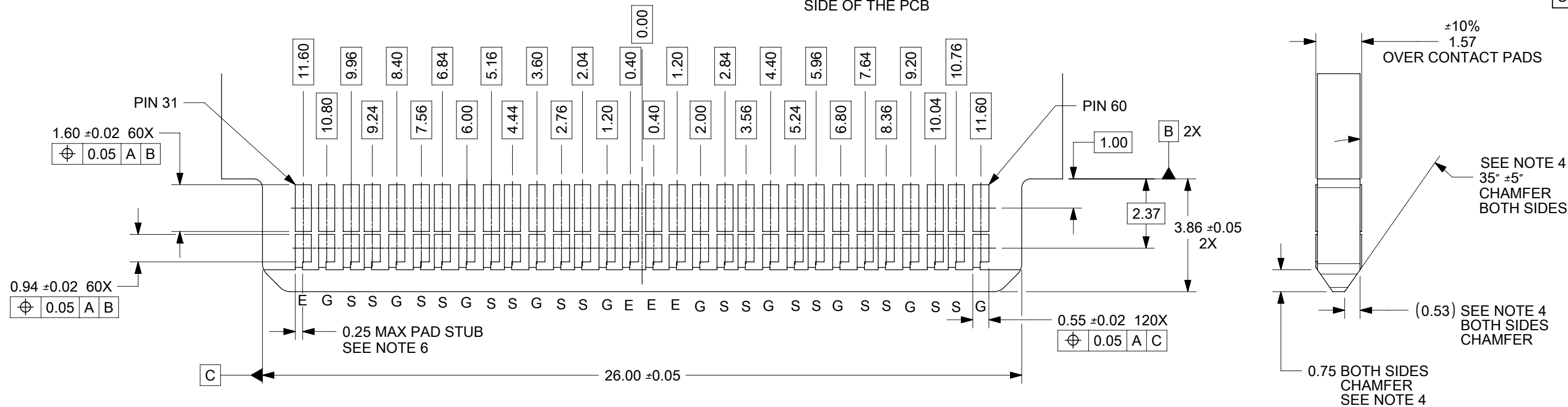
THIS DRAWING CONTAINS INFORMATION THAT IS PROPRIETARY TO MOLEX ELECTRONIC TECHNOLOGIES, LLC AND SHOULD NOT BE USED WITHOUT WRITTEN PERMISSION									
DIMENSION UNITS	SCALE	CURRENT REV DESC: ADD -5105							
mm	7:1								
GENERAL TOLERANCES (UNLESS SPECIFIED)									
ANGULAR TOL	± 0.5°	EC NO: 623611 DRWN: JBINGHAM 2019/09/03 CHK'D: KLANG 2019/09/06 APPR: KLANG 2019/09/06							
4 PLACES	±	INITIAL REVISION: DRWN: JBINGHAM 2016/08/25 APPR: JBINGHAM 2016/09/07							
3 PLACES	±								
2 PLACES	± 0.13	DOCUMENT NUMBER			DOC TYPE		DOC PART		REVISION
1 PLACE	± 0.25	SD-171450-5000			PSD		001		B
0 PLACES	±	MATERIAL NUMBER		CUSTOMER		SHEET NUMBER			
DRAFT WHERE APPLICABLE MUST REMAIN WITHIN DIMENSIONS		THIRD ANGLE PROJECTION		DRAWING		SERIES		SEE CHART	
		B-SIZE		171450		GENERAL MARKET		6 OF 8	

EDGECARD LAYOUT - 60 CKT

FRONT SIDE

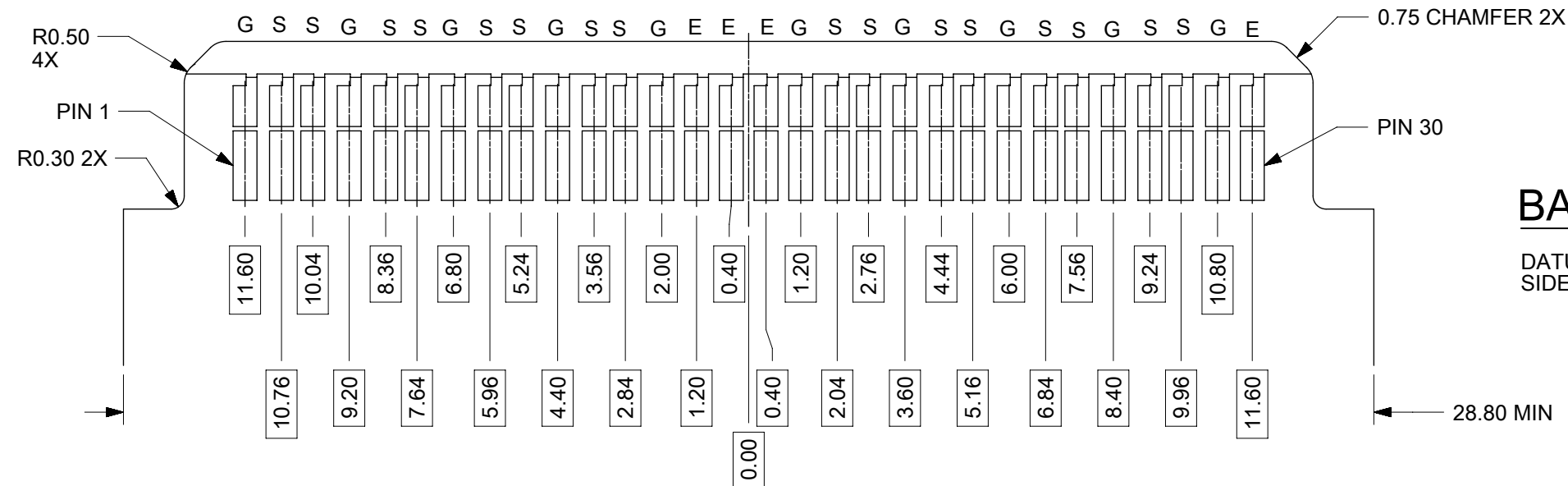
DATUM **A** IS THE OPPOSITE SIDE OF THE PCB

PINOUT LEGEND
 E = EXTRA
 G = GROUND
 S = SIGNAL



BACK SIDE

DATUM **A** IS THE OPPOSITE SIDE OF THE PCB



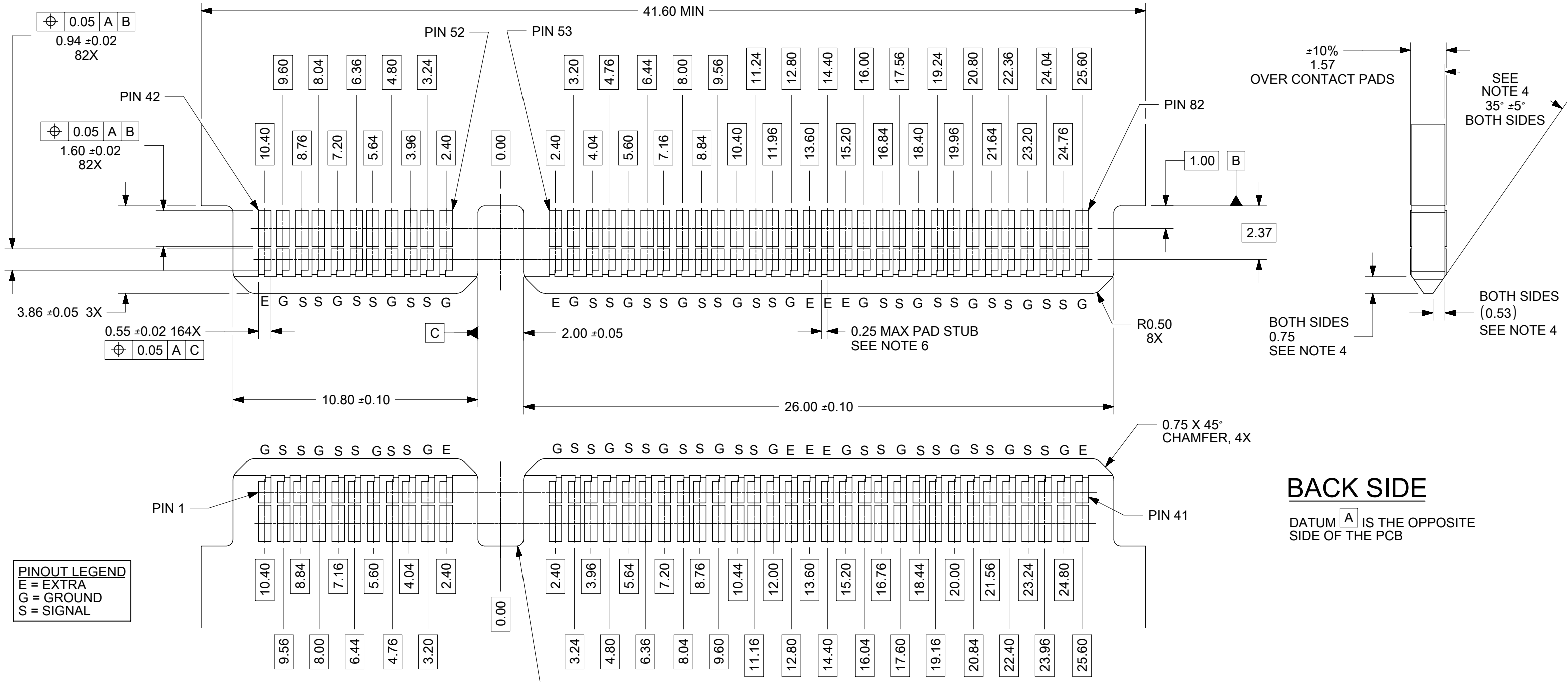
- NOTES:**
- PIN NUMBERING IS FOR REFERENCE ONLY. OTHER PIN NUMBERS WILL NOT AFFECT THE OPERATION OF THE CONNECTOR.
 - EDGE CARD SHOULDERS STOP ON RECEPTACLE SHOULDERS. EDGE CARD BOTTOM DOES NOT CONTACT RECEPTACLE PCB.
 - PAD SET BACK FROM CHAMFER ENOUGH TO ACCOMMODATE LARGEST CHAMFER WITHOUT DAMAGE TO PAD EDGE.
 - CHAMFER DEPTH SHOULD BE AS LARGE AS PRACTICAL TO ENSURE CORRECT MATING TO THE RECEPTACLE.
 - ALL CHAMFERED EDGES SHOULD BE ROUNDED WHERE POSSIBLE.
 - INTERNAL PLATING BRIDGES ARE PREFERRED TO ELIMINATE PAD STUB.

THIS DRAWING CONTAINS INFORMATION THAT IS PROPRIETARY TO MOLEX ELECTRONIC TECHNOLOGIES, LLC AND SHOULD NOT BE USED WITHOUT WRITTEN PERMISSION																																					
DIMENSION UNITS	SCALE	CURRENT REV DESC: ADD -5105																																			
mm	7:1	<table border="1"> <tr> <td colspan="4">molex</td> </tr> <tr> <td colspan="4">SPEEDSTACK RECEPTACLE ASSEMBLY SALES DRAWING</td> </tr> <tr> <td colspan="4">PRODUCT CUSTOMER DRAWING</td> </tr> <tr> <td>DOCUMENT NUMBER</td> <td>DOC TYPE</td> <td>DOC PART</td> <td>REVISION</td> </tr> <tr> <td>SD-171450-5000</td> <td>PSD</td> <td>001</td> <td>B</td> </tr> <tr> <td>MATERIAL NUMBER</td> <td>CUSTOMER</td> <td colspan="2">SHEET NUMBER</td> </tr> <tr> <td>SEE CHART</td> <td>GENERAL MARKET</td> <td colspan="2">7 OF 8</td> </tr> </table>								molex				SPEEDSTACK RECEPTACLE ASSEMBLY SALES DRAWING				PRODUCT CUSTOMER DRAWING				DOCUMENT NUMBER	DOC TYPE	DOC PART	REVISION	SD-171450-5000	PSD	001	B	MATERIAL NUMBER	CUSTOMER	SHEET NUMBER		SEE CHART	GENERAL MARKET	7 OF 8	
molex																																					
SPEEDSTACK RECEPTACLE ASSEMBLY SALES DRAWING																																					
PRODUCT CUSTOMER DRAWING																																					
DOCUMENT NUMBER	DOC TYPE									DOC PART	REVISION																										
SD-171450-5000	PSD									001	B																										
MATERIAL NUMBER	CUSTOMER	SHEET NUMBER																																			
SEE CHART	GENERAL MARKET	7 OF 8																																			
GENERAL TOLERANCES (UNLESS SPECIFIED)		EC NO: 623611	2019/09/03																																		
ANGULAR TOL	± 0.5°	DRWN: JBINGHAM	2019/09/06																																		
4 PLACES	±	CHK'D: KLANG	2019/09/06																																		
3 PLACES	±	APPR: KLANG	2019/09/06																																		
2 PLACES	± 0.13	INITIAL REVISION:																																			
1 PLACE	± 0.25	DRWN: JBINGHAM	2016/08/25																																		
0 PLACES	±	APPR: JBINGHAM	2016/09/07																																		
DRAFT WHERE APPLICABLE MUST REMAIN WITHIN DIMENSIONS	THIRD ANGLE PROJECTION	DRAWING	SERIES	MATERIAL NUMBER	CUSTOMER	SHEET NUMBER																															
		B-SIZE	171450	SEE CHART	GENERAL MARKET	7 OF 8																															

FRONT SIDE

EDGECARD LAYOUT - 82 CKT

DATUM **A** IS THE OPPOSITE SIDE OF THE PCB



PINOUT LEGEND
 E = EXTRA
 G = GROUND
 S = SIGNAL

- NOTES:**
- PIN NUMBERING IS FOR REFERENCE ONLY. OTHER PIN NUMBERS WILL NOT AFFECT THE OPERATION OF THE CONNECTOR.
 - EDGE CARD SHOULDERS STOP ON RECEPTACLE SHOULDERS. EDGE CARD BOTTOM DOES NOT CONTACT RECEPTACLE PCB.
 - PAD SET BACK FROM CHAMFER ENOUGH TO ACCOMMODATE LARGEST CHAMFER WITHOUT DAMAGE TO PAD EDGE.
 - CHAMFER DEPTH SHOULD BE AS LARGE AS PRACTICAL TO ENSURE CORRECT MATING TO THE RECEPTACLE.
 - ALL CHAMFERED EDGES SHOULD BE ROUNDED WHERE POSSIBLE.
 - INTERNAL PLATING BRIDGES ARE PREFERRED TO ELIMINATE PAD STUB.

BACK SIDE

DATUM **A** IS THE OPPOSITE SIDE OF THE PCB

THIS DRAWING CONTAINS INFORMATION THAT IS PROPRIETARY TO MOLEX ELECTRONIC TECHNOLOGIES, LLC AND SHOULD NOT BE USED WITHOUT WRITTEN PERMISSION											
DIMENSION UNITS mm		SCALE 6:1		CURRENT REV DESC: ADD -5105							
GENERAL TOLERANCES (UNLESS SPECIFIED)		ANGULAR TOL ± 0.5°		EC NO: 623611		DRWN: JBINGHAM 2019/09/03		SPEEDSTACK RECEPTACLE ASSEMBLY SALES DRAWING			
4 PLACES ±		3 PLACES ±		CHK'D: KLANG 2019/09/06		APPR: KLANG 2019/09/06		PRODUCT CUSTOMER DRAWING			
2 PLACES ± 0.13		1 PLACE ± 0.25		INITIAL REVISION:		DRWN: JBINGHAM 2016/08/25		DOCUMENT NUMBER			
0 PLACES ±		DRAFT WHERE APPLICABLE MUST REMAIN WITHIN DIMENSIONS		THIRD ANGLE PROJECTION		DRAWING		SERIES			
B-SIZE		171450		MATERIAL NUMBER		CUSTOMER		SHEET NUMBER			
SEE CHART		GENERAL MARKET		SD-171450-5000		PSD 001		B			
8 OF 8											