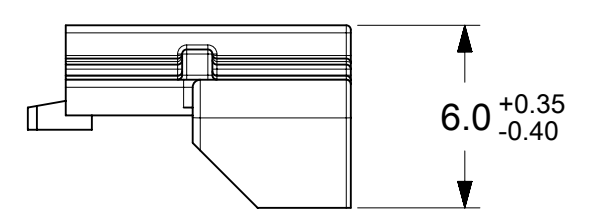
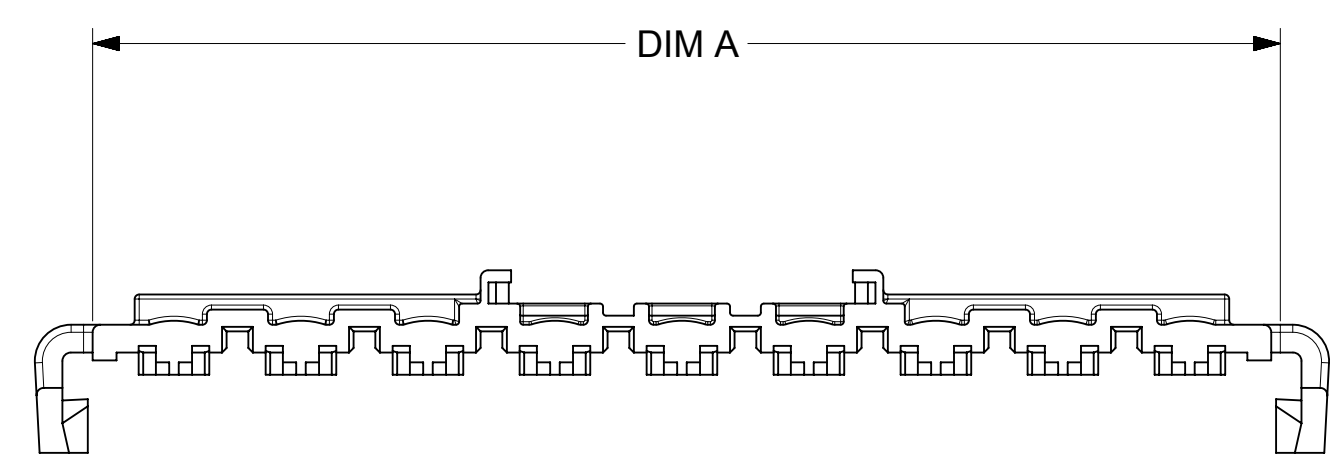
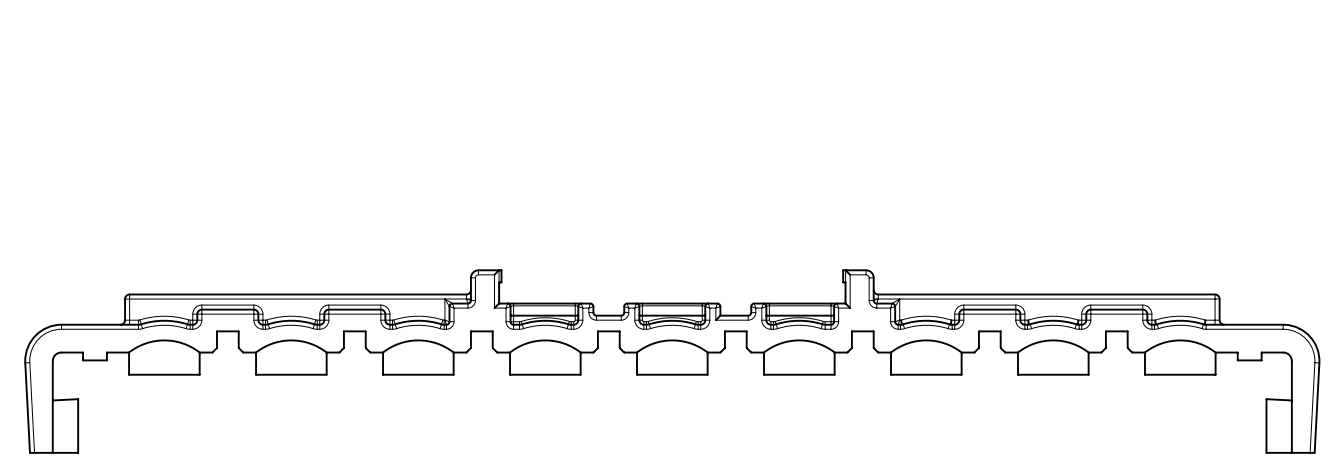
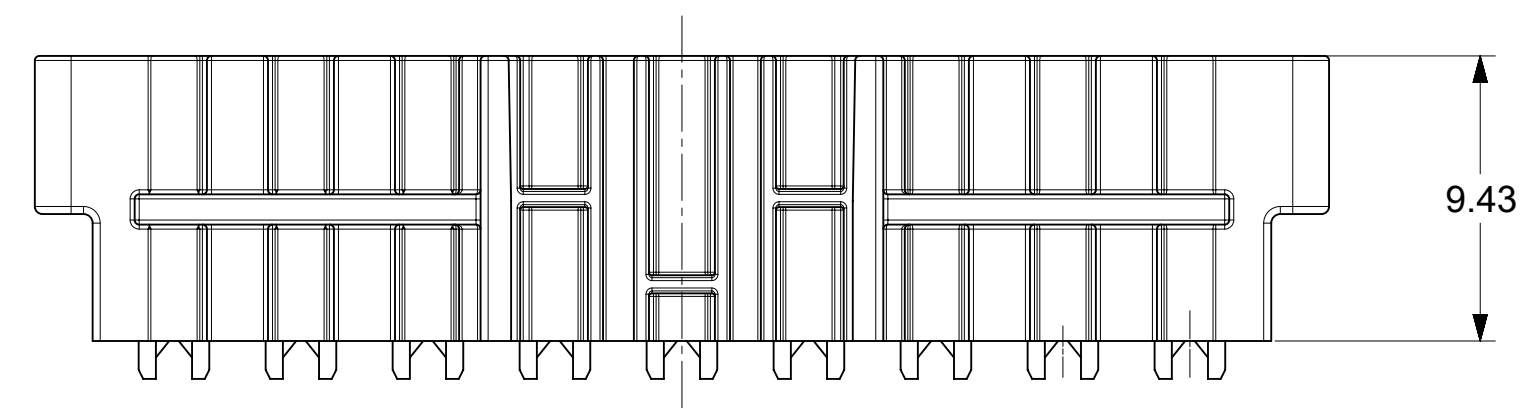


PART NUMBER	CKTS	MATERIAL	DIM A
1727090002	2	A	10.97
1727090003	3	A	13.78
1727090004	4	A	17.98
1727090005	5	A	22.18
1727090006	6	A	26.38
1727090102	2	B	10.97
1727090103	3	B	13.78
1727090104	4	B	17.98
1727090105	5	B	22.18
1727090106	6	B	26.38
1727090007	7	A	30.58
1727090008	8	A	34.78
1727090009	9	A	38.98
1727090010	10	A	43.18
1727090011	11	A	47.38
1727090012	12	A	51.58
1727090107	7	B	30.58
1727090108	8	B	34.78
1727090109	9	B	38.98
1727090110	10	B	43.18
1727090111	11	B	47.38
1727090112	12	B	51.58



NOTES:

- MATERIAL:**
'A' = NYLON V-0, LOW HALOGEN, COLOR: NATURAL (WHITE)
'B' = NYLON V-2, GLOW WIRE CAPABLE, COLOR: NATURAL (WHITE)
- FINISH:** NONE
- PRODUCT SPECIFICATION:** PS-172718-0000 and 2029880001-PS
APPLICATION SPECIFICATION: AS-172718-0000
- PACKAGING SPECIFICATION:**
PK-172709-0000
REFER TO AS-45499-001 FOR MOISTURIZING NYLON CONNECTOR PARTS.
- THIS TPA TO BE USED WITH MOLEX FRONT HOUSING SERIES 172708, 172762, 172767, 200453, 200471 & 200488.
- DIMENSIONS GIVEN ACROSS CENTERLINES ARE TO BE SYMMETRICAL ABOUT THOSE CENTERLINES WITHIN HALF THE TOTAL TOLERANCE.
- THIS PART CONFORMS TO CLASS 'B' REQUIREMENTS OF COSMETIC SPECIFICATION PS-45499-002.

THIS DRAWING CONTAINS INFORMATION THAT IS PROPRIETARY TO MOLEX ELECTRONIC TECHNOLOGIES, LLC AND SHOULD NOT BE USED WITHOUT WRITTEN PERMISSION

DIMENSION UNITS mm	SCALE 4:1	CURRENT REV DESC: NEW RELEASE		molex		
GENERAL TOLERANCES (UNLESS SPECIFIED)		EC NO: 609800				
ANGULAR TOL ± 0.5°		DRWN: SGANGADHARDO 2018/12/21		PRODUCT CUSTOMER DRAWING		
4 PLACES ±		CHK'D: SGANGADHARDO 2019/01/02		DOCUMENT NUMBER		
3 PLACES ±		APPR: ISHWARG 2019/01/03		1727090001-SD		
2 PLACES ± 0.25		INITIAL REVISION:		DOC TYPE	DOC PART	REVISION
1 PLACE ± 0.35		DRWN: SNAGARAVENKA 2017/02/22		PSD	000	A2
0 PLACES ±		APPR: ISHWARG 2018/07/23		SHEET NUMBER		
DRAFT WHERE APPLICABLE MUST REMAIN WITHIN DIMENSIONS	THIRD ANGLE PROJECTION	DRAWING	SERIES	MATERIAL NUMBER	CUSTOMER	SHEET NUMBER
		C-SIZE	172709	SEE TABLE	GENERAL MARKET	1 OF 1