

## FEATURES AND SPECIFICATIONS

### Reference Information

Packaging: Chain or bulk

UL File No.: E29179

CSA File No.: LR19980

Mates With: HCS-125 and standard .125" housings

Designed In: Inches

### Electrical

Contact Resistance: 10mΩ max.

### Mechanical

Contact Insertion Force: 9.25 lb max.

Contact Retention to Housing: 20 lb min.

Wire Pull-Out Force: 10 AWG—78 lb

12 AWG—70 lb

Mating Force: 5.75 lb max.

Unmating Force: 2.0 lb min.

Durability: 25 mating/unmating cycles max.

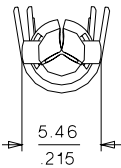
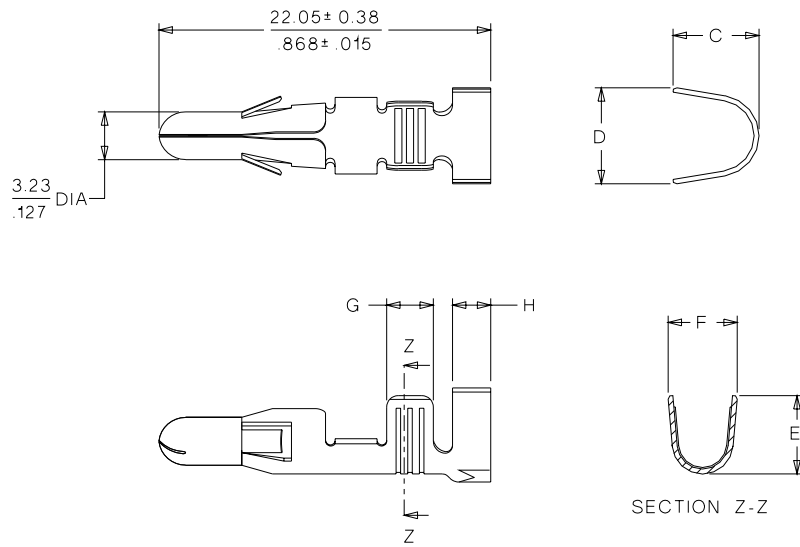
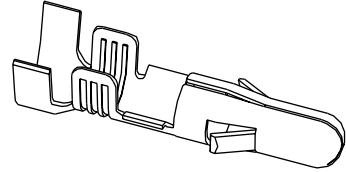
### Physical

Contact: Brass or Phosphor Bronze

Plating: Tin

Temperature: -40 to +105°C

# molex® 3.18mm (.125") Diameter HCS-125 Pin and Socket Male Terminals



## ORDERING INFORMATION AND DIMENSIONS

Type	Wire Size AWG	Maximum Insulation Diameter	Series	Order No.		Dimension					
				Chain	Loose	C	D	E	F	G	H
Brass	10-14	4.57 (.180)	1900	18-12-2601	18-12-2602	5.71 (.225)	6.35 (.250)	5.21 (.205)	4.57 (.180)	3.10 (.122)	2.54 (.100)
	16-18	3.04 (.120)	2046	18-12-2221	18-12-2222	4.83 (.190)	5.33 (.210)	3.18 (.125)	3.08 (.180)	3.10 (.122)	2.54 (.100)
	16-18	4.57 (.180)	42554	18-12-2405		5.71 (.225)	6.35 (.250)	3.18 (.125)	3.05 (.120)	3.10 (.122)	2.54 (.100)
Phosphor Bronze	10-14	4.57 (.180)	42546	18-12-1607		5.71 (.225)	6.35 (.250)	5.21 (.205)	3.08 (.180)	3.10 (.122)	2.54 (.100)
	16-18	3.04 (.120)	8946			4.83 (.190)	5.33 (.210)	3.18 (.125)	3.08 (.120)	3.10 (.122)	2.54 (.100)