

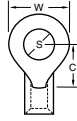
Distributed by:

JAMECO[®]
ELECTRONICS

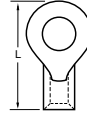
www.Jameco.com ♦ 1-800-831-4242

The content and copyrights of the attached
material are the property of its owner.

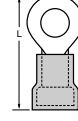
Jameco Part Number 503986



Material: Copper



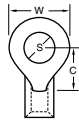
Versakrimp®



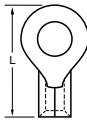
Avikrimp®
(Nylon Insulation)

Wire Range AWG	Stud Size S	Max. Width W	Min. Clearance C	Loose Piece Order No.	Mylar Tape Order No.	Max. Length L	Loose Piece Order No.	Mylar Tape Order No.	Max. Length L	
18-22 (0.80-0.35)	1-2 (2)	6.00 (.235)	3.90 (.157)				19073-0005	19073-0006	18.00 (.709)	
	3-4 (2.6)	5.00 (.197)	4.40 (.173)				19073-0003	19073-0004	18.20 (.715)	
		6.00 (.235)	3.90 (.157)	19193-0007	19193-0008	12.30 (.484)	19073-0007	19073-0008	18.00 (.709)	
	5-6 (3-3.5)	6.70 (.264)	6.10 (.240)					19073-0036	19073-0037	20.50 (.807)
		6.00 (.235)	3.90 (.157)	19193-0009	19193-0011	12.30 (.484)	19073-0009	19073-0010	18.00 (.709)	
		6.70 (.264)	6.10 (.240)	19193-0034	19193-0035	14.80 (.582)	19073-0038	19073-0040	20.50 (.807)	
		8.20 (.322)	7.60 (.300)	19193-0012	19193-0013	17.00 (.671)	19073-0011	19073-0012	22.80 (.896)	
	8 (4)	6.70 (.264)	6.10 (.240)	19193-0036	19193-0037	14.80 (.582)	19073-0042	19073-0043	20.50 (.807)	
		8.20 (.322)	7.60 (.300)	19193-0014	19193-0015	17.00 (.671)	19073-0013	19073-0015	22.80 (.896)	
	10 (-)	7.20 (.283)	6.10 (.240)	19193-0041	19193-0042	15.00 (.591)	19073-0049	19073-0050	20.70 (.816)	
		8.20 (.322)	7.60 (.300)	19193-0016	19193-0017	17.00 (.671)	19073-0017	19073-0019	22.80 (.896)	
	1/4 (6)	12.10 (.477)	9.80 (.386)	19193-0021	19193-0022	21.20 (.835)	19073-0024	19073-0026	26.90 (1.060)	
	5/16 (8)	12.10 (.477)	9.80 (.386)	19193-0023	19193-0024	21.20 (.835)	19073-0027	19073-0028	26.90 (1.060)	
	3/8 (9)	13.80 (.544)	14.00 (.552)				19073-0032	19073-0033	31.90 (1.259)	
14-16 (2.00-1.30)	1-2 (2)	6.60 (.260)	5.30 (.209)	19193-0062	19193-0063	14.20 (.560)				
	3-4 (2.6)	6.00 (.260)	5.30 (.209)				19073-0065	19073-0066	22.30 (.880)	
		6.60 (.260)	5.30 (.209)				19073-0067	19073-0070	22.30 (.880)	
	5-6 (3-3.5)	8.20 (.322)	7.00 (.275)	19193-0078	19193-0079	16.30 (.640)	19073-0083	19073-0084	22.30 (.880)	
		6.60 (.260)	5.30 (.209)				19073-0072	19073-0073	22.30 (.880)	
	8 (4)	8.20 (.322)	7.00 (.275)	19193-0080	19193-0081	16.30 (.640)	19073-0085	19073-0086	22.30 (.880)	
		8.90 (.352)	7.90 (.310)	19193-0089	19193-0090	17.70 (.696)	19073-0094	19073-0096	23.80 (.936)	
	10 (-)	8.20 (.322)	7.00 (.275)	19193-0082	19193-0083	16.30 (.640)	19073-0087	19073-0088	22.30 (.880)	
		8.90 (.352)	7.90 (.310)	19193-0091	19193-0092	17.70 (.696)	19073-0097	19073-0099	23.80 (.936)	
	1/4 (6)	12.10 (.477)	9.90 (.388)				19073-0074	19073-0075	27.40 (1.077)	
		12.10 (.477)	9.90 (.388)	19193-0072	19193-0073	21.20 (.837)	19073-0076	19073-0077	27.40 (1.077)	
	5/16 (8)	13.80 (.544)	13.60 (.535)	19193-0074	19193-0075	21.20 (.837)	19073-0079	19073-0080	27.40 (1.077)	
		13.80 (.544)	13.60 (.535)				19073-0061	19073-0062	31.80 (1.250)	
	3/8 (9)	13.80 (.544)	13.60 (.535)	19193-0057	19193-0058	25.70 (1.010)	19073-0059	19073-0060	31.80 (1.250)	
14-16 (2.00-1.30) Heavy Duty (Also suitable for 12 AWG)	8 (4)	9.80 (.385)	7.70 (.303)				19058-0041		27.70 (1.091)	
		9.80 (.385)	7.70 (.303)				19058-0047	19058-0050	27.70 (1.091)	
	10 (-)	13.70 (.540)	10.00 (.393)					19058-0060	32.00 (1.258)	
		13.70 (.540)	10.00 (.393)				19058-0063	19058-0068	32.00 (1.258)	
	5/16 (8)	13.70 (.540)	10.00 (.393)				19058-0072	19058-0077	32.00 (1.258)	
	3/8 (9)	15.20 (.598)	11.80 (.466)				19058-0117	19058-0119	34.60 (1.362)	
	7/16 (11)	19.30 (.760)	15.50 (.611)				19058-0026		40.30 (1.586)	
	1/2 (12)	19.30 (.760)	15.50 (.611)				19058-0016		40.30 (1.586)	

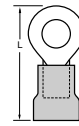
STANDARD RING TONGUE



Material: Copper

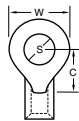


Krimptite®



Insulkrimp®
(PVC Insulation)

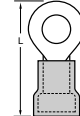
Wire Range AWG (mm ²)	Stud Size S	Maximum Width W	Minimum Clearance C	Loose Piece Order No.	Mylar Tape Order No.	Maximum Length L	Loose Piece Order No.	Mylar Tape Order No.	Maximum Length L
10-12 (5.00-3.30)	5-6 (3-3.5)	7.40 (.292)	7.80 (.306)	19069-0230	19069-0232	18.80 (.741)	19070-0143	19070-0144	26.20 (1.032)
		9.80 (.385)	7.70 (.303)	19069-0202		19.90 (.785)	19070-0119	19070-0120	27.30 (1.076)
	8 (4)	7.40 (.292)	7.80 (.306)	19069-0233	19069-0235	18.80 (.741)	19070-0145	19070-0146	26.20 (1.032)
		9.80 (.385)	7.70 (.303)	19069-0205	19069-0208	19.90 (.785)	19070-0121	19070-0122	27.30 (1.076)
	10 (-)	9.80 (.385)	7.70 (.303)	19069-0209	19069-0212	19.90 (.785)	19070-0123	19070-0125	27.30 (1.076)
		13.70 (.540)	10.00 (.393)	19069-0217	19069-0218	24.20 (.952)	19070-0130	19070-0131	31.60 (1.243)
		15.20 (.598)	14.40 (.566)	19069-0236		26.80 (1.056)			
	1/4 (6)	13.70 (.540)	10.00 (.393)	19069-0219	19069-0221	24.20 (.952)	19070-0132	19070-0133	31.60 (1.243)
		15.20 (.598)	14.40 (.566)	19069-0238	19069-0240	26.80 (1.056)	19070-0150	19070-0151	34.20 (1.347)
	5/16 (8)	13.70 (.540)	10.00 (.393)	19069-0223	19069-0225	24.20 (.952)	19070-0136	19070-0137	31.60 (1.243)
		15.20 (.598)	14.40 (.566)	19069-0244	19069-0246	26.80 (1.056)	19070-0155	19070-0156	34.20 (1.347)
	3/8 (9)	15.20 (.598)	14.40 (.566)	19069-0241	19069-0243	26.80 (1.056)	19070-0153	19070-0154	34.20 (1.347)
		19.30 (.760)	15.50 (.611)	19069-0196	19069-0145	32.50 (1.280)			39.90 (1.571)
	7/16 (11)	19.30 (.760)	15.50 (.611)	19069-0198	19069-0146	32.50 (1.280)	19070-0115	19070-0116	39.90 (1.571)
	1/2 (12)	19.30 (.760)	15.50 (.611)	19069-0192	19069-0194	32.50 (1.280)	19070-0109	19070-0110	39.90 (1.571)



Material: Copper



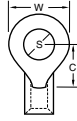
Versakrimp™



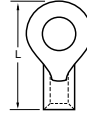
Avikrimp®
(Nylon Insulation)

Wire Range AWG (mm ²)	Stud Size S	Maximum Width W	Minimum Clearance C	Loose Piece Order No.	Mylar Tape Order No.	Maximum Length L	Loose Piece Order No.	Mylar Tape Order No.	Expanded Flare Order No.*	Expanded Flare on Mylar Tape Order No.*	Maximum Length L	
10-12 (5.00-3.30)	5-6 (3-3.5)	7.40 (.292)	7.80 (.306)	19193-0128	19193-0129	18.80 (.741)	19073-0216	19073-0218	19073-0220	19073-0221	27.00 (1.047)	
		9.80 (.385)	7.70 (.303)	19193-0103	19193-0105	19.90 (.785)	19073-0160	19073-0162	19073-0163	19073-0164	27.70 (1.091)	
	8 (4)	7.40 (.292)	7.80 (.306)	19193-0130	19193-0131	18.80 (.741)	19073-0222	19073-0224	19073-0225	19073-0226	27.00 (1.047)	
		9.80 (.385)	7.70 (.303)	19193-0106	19193-0108	19.90 (.785)	19073-0165	19073-0167	19073-0168	19073-0169	27.70 (1.091)	
	10 (-)	9.80 (.385)	7.70 (.303)	19193-0109	19193-0111	19.90 (.785)	19073-0170	19073-0172	19073-0173	19073-0174	27.70 (1.091)	
		13.70 (.540)	10.00 (.393)	19193-0114	19193-0115	24.20 (.952)	19073-0179	19073-0180	19073-0181	19073-0184	32.00 (1.258)	
		15.20 (.598)	14.40 (.566)				19073-0227	19073-0228	19073-0229	19073-0230	34.60 (1.362)	
	1/4 (6)	13.70 (.540)	10.00 (.393)	19193-0116	19193-0118	24.20 (.952)	19073-0188	19073-0190	19073-0191	19073-0194	32.00 (1.258)	
		15.20 (.598)	14.40 (.566)	19193-0134	19193-0135	26.80 (1.056)	19073-0231	19073-0232	19073-0233	19073-0234	34.60 (1.362)	
	5/16 (8)	13.70 (.540)	10.00 (.393)	19193-0120	19193-0122	24.20 (.952)	19073-0200	19073-0201	19073-0202	19073-0205	32.00 (1.258)	
		15.20 (.598)	14.40 (.566)	19193-0141	19193-0142	26.80 (1.056)	19073-0242	19073-0243	19073-0244	19073-0245	34.60 (1.362)	
	3/8 (9)	15.20 (.598)	14.40 (.566)	19193-0137	19193-0139	26.80 (1.056)	19073-0236	19073-0237	19073-0238	19073-0239	34.60 (1.362)	
		19.30 (.760)	15.50 (.611)	19193-0097		32.50 (1.280)						
	7/16 (11)	19.30 (.760)	15.50 (.611)	19193-0099	19193-0100	32.50 (1.280)						
	1/2 (12)	19.30 (.760)	15.50 (.611)	19193-0094	19193-0095	32.50 (1.280)	19073-0145	19073-0146	19073-0147			40.30 (1.586)

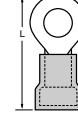
* For use with heavier wire insulation. Maximum wire insulation (.255") 6.50mm.



Material: Copper



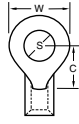
Versakrimp®



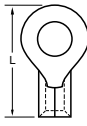
Avikrimp®
(Nylon Insulation)

Wire Range AWG	Stud Size S	Max. Width W	Min. Clearance C	Loose Piece Order No.	Mylar Tape Order No.	Max. Length L	Loose Piece Order No.	Mylar Tape Order No.	Max. Length L
18-22 (0.80-0.35)	1-2 (2)	6.00 (.235)	3.90 (.157)				19073-0005	19073-0006	18.00 (.709)
	3-4 (2.6)	5.00 (.197)	4.40 (.173)				19073-0003	19073-0004	18.20 (.715)
		6.00 (.235)	3.90 (.157)	19193-0007	19193-0008	12.30 (.484)	19073-0007	19073-0008	18.00 (.709)
	5-6 (3-3.5)	6.70 (.264)	6.10 (.240)				19073-0036	19073-0037	20.50 (.807)
		6.00 (.235)	3.90 (.157)	19193-0009	19193-0011	12.30 (.484)	19073-0009	19073-0010	18.00 (.709)
		6.70 (.264)	6.10 (.240)	19193-0034	19193-0035	14.80 (.582)	19073-0038	19073-0040	20.50 (.807)
		8.20 (.322)	7.60 (.300)	19193-0012	19193-0013	17.00 (.671)	19073-0011	19073-0012	22.80 (.896)
	8 (4)	6.70 (.264)	6.10 (.240)	19193-0036	19193-0037	14.80 (.582)	19073-0042	19073-0043	20.50 (.807)
		8.20 (.322)	7.60 (.300)	19193-0014	19193-0015	17.00 (.671)	19073-0013	19073-0015	22.80 (.896)
	10 (-)	7.20 (.283)	6.10 (.240)	19193-0041	19193-0042	15.00 (.591)	19073-0049	19073-0050	20.70 (.816)
		8.20 (.322)	7.60 (.300)	19193-0016	19193-0017	17.00 (.671)	19073-0017	19073-0019	22.80 (.896)
	1/4 (6)	12.10 (.477)	9.80 (.386)	19193-0021	19193-0022	21.20 (.835)	19073-0024	19073-0026	26.90 (1.060)
	5/16 (8)	12.10 (.477)	9.80 (.386)	19193-0023	19193-0024	21.20 (.835)	19073-0027	19073-0028	26.90 (1.060)
	3/8 (9)	13.80 (.544)	14.00 (.552)				19073-0032	19073-0033	31.90 (1.259)
14-16 (2.00-1.30)	1-2 (2)	6.60 (.260)	5.30 (.209)	19193-0062	19193-0063	14.20 (.560)			
	3-4 (2.6)	6.00 (.260)	5.30 (.209)				19073-0065	19073-0066	22.30 (.880)
		6.60 (.260)	5.30 (.209)				19073-0067	19073-0070	22.30 (.880)
	5-6 (3-3.5)	8.20 (.322)	7.00 (.275)	19193-0078	19193-0079	16.30 (.640)	19073-0083	19073-0084	22.30 (.880)
		6.60 (.260)	5.30 (.209)				19073-0072	19073-0073	22.30 (.880)
	8 (4)	8.20 (.322)	7.00 (.275)	19193-0080	19193-0081	16.30 (.640)	19073-0085	19073-0086	22.30 (.880)
		8.90 (.352)	7.90 (.310)	19193-0089	19193-0090	17.70 (.696)	19073-0094	19073-0096	23.80 (.936)
	10 (-)	8.20 (.322)	7.00 (.275)	19193-0082	19193-0083	16.30 (.640)	19073-0087	19073-0088	22.30 (.880)
		8.90 (.352)	7.90 (.310)	19193-0091	19193-0092	17.70 (.696)	19073-0097	19073-0099	23.80 (.936)
	1/4 (6)	12.10 (.477)	9.90 (.388)				19073-0074	19073-0075	27.40 (1.077)
		12.10 (.477)	9.90 (.388)	19193-0072	19193-0073	21.20 (.837)	19073-0076	19073-0077	27.40 (1.077)
	5/16 (8)	13.80 (.544)	13.60 (.535)	19193-0074	19193-0075	21.20 (.837)	19073-0079	19073-0080	27.40 (1.077)
		13.80 (.544)	13.60 (.535)				19073-0061	19073-0062	31.80 (1.250)
	3/8 (9)	13.80 (.544)	13.60 (.535)	19193-0057	19193-0058	25.70 (1.010)	19073-0059	19073-0060	31.80 (1.250)
14-16 (2.00-1.30) Heavy Duty (Also suitable for 12 AWG)	8 (4)	9.80 (.385)	7.70 (.303)				19058-0041		27.70 (1.091)
		9.80 (.385)	7.70 (.303)				19058-0047	19058-0050	27.70 (1.091)
	10 (-)	13.70 (.540)	10.00 (.393)					19058-0060	32.00 (1.258)
		13.70 (.540)	10.00 (.393)				19058-0063	19058-0068	32.00 (1.258)
	5/16 (8)	13.70 (.540)	10.00 (.393)				19058-0072	19058-0077	32.00 (1.258)
	3/8 (9)	15.20 (.598)	11.80 (.466)				19058-0117	19058-0119	34.60 (1.362)
	7/16 (11)	19.30 (.760)	15.50 (.611)				19058-0026		40.30 (1.586)
	1/2 (12)	19.30 (.760)	15.50 (.611)				19058-0016		40.30 (1.586)

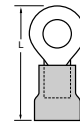
STANDARD RING TONGUE



Material: Copper

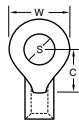


Krimptite®



Insulkrimp®
(PVC Insulation)

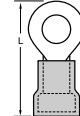
Wire Range AWG (mm ²)	Stud Size S	Maximum Width W	Minimum Clearance C	Loose Piece Order No.	Mylar Tape Order No.	Maximum Length L	Loose Piece Order No.	Mylar Tape Order No.	Maximum Length L
10-12 (5.00-3.30)	5-6 (3-3.5)	7.40 (.292)	7.80 (.306)	19069-0230	19069-0232	18.80 (.741)	19070-0143	19070-0144	26.20 (1.032)
		9.80 (.385)	7.70 (.303)	19069-0202		19.90 (.785)	19070-0119	19070-0120	27.30 (1.076)
	8 (4)	7.40 (.292)	7.80 (.306)	19069-0233	19069-0235	18.80 (.741)	19070-0145	19070-0146	26.20 (1.032)
		9.80 (.385)	7.70 (.303)	19069-0205	19069-0208	19.90 (.785)	19070-0121	19070-0122	27.30 (1.076)
	10 (-)	9.80 (.385)	7.70 (.303)	19069-0209	19069-0212	19.90 (.785)	19070-0123	19070-0125	27.30 (1.076)
		13.70 (.540)	10.00 (.393)	19069-0217	19069-0218	24.20 (.952)	19070-0130	19070-0131	31.60 (1.243)
		15.20 (.598)	14.40 (.566)	19069-0236		26.80 (1.056)			
	1/4 (6)	13.70 (.540)	10.00 (.393)	19069-0219	19069-0221	24.20 (.952)	19070-0132	19070-0133	31.60 (1.243)
		15.20 (.598)	14.40 (.566)	19069-0238	19069-0240	26.80 (1.056)	19070-0150	19070-0151	34.20 (1.347)
	5/16 (8)	13.70 (.540)	10.00 (.393)	19069-0223	19069-0225	24.20 (.952)	19070-0136	19070-0137	31.60 (1.243)
		15.20 (.598)	14.40 (.566)	19069-0244	19069-0246	26.80 (1.056)	19070-0155	19070-0156	34.20 (1.347)
	3/8 (9)	15.20 (.598)	14.40 (.566)	19069-0241	19069-0243	26.80 (1.056)	19070-0153	19070-0154	34.20 (1.347)
		19.30 (.760)	15.50 (.611)	19069-0196	19069-0145	32.50 (1.280)			39.90 (1.571)
	7/16 (11)	19.30 (.760)	15.50 (.611)	19069-0198	19069-0146	32.50 (1.280)	19070-0115	19070-0116	39.90 (1.571)
	1/2 (12)	19.30 (.760)	15.50 (.611)	19069-0192	19069-0194	32.50 (1.280)	19070-0109	19070-0110	39.90 (1.571)



Material: Copper



Versakrimp™

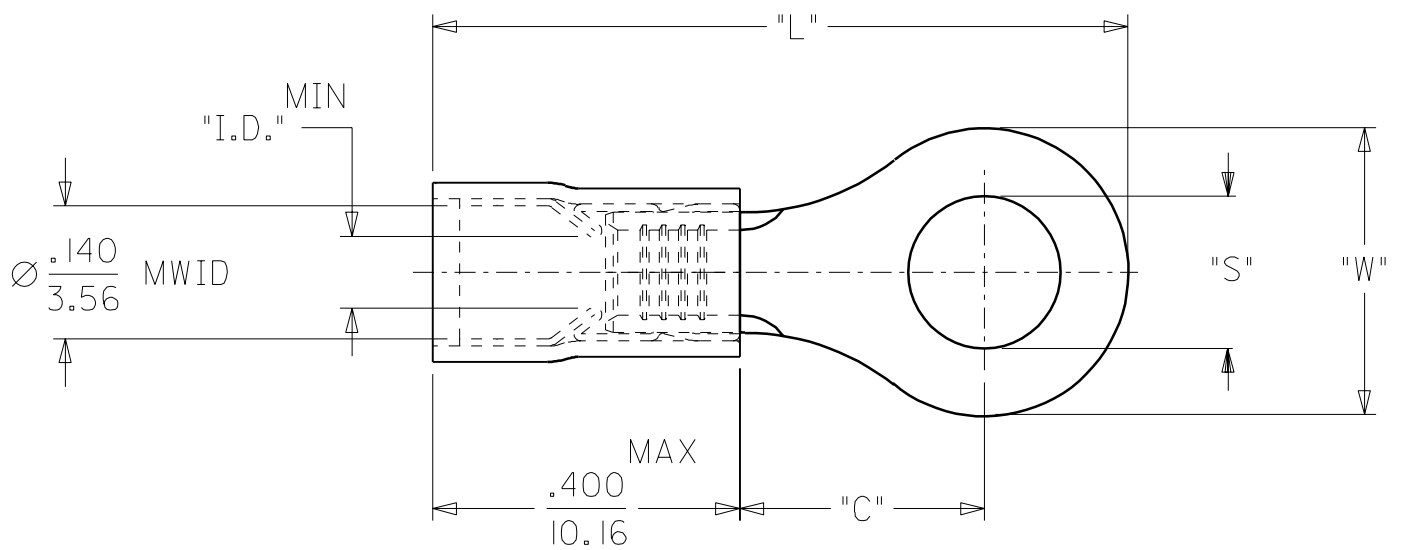
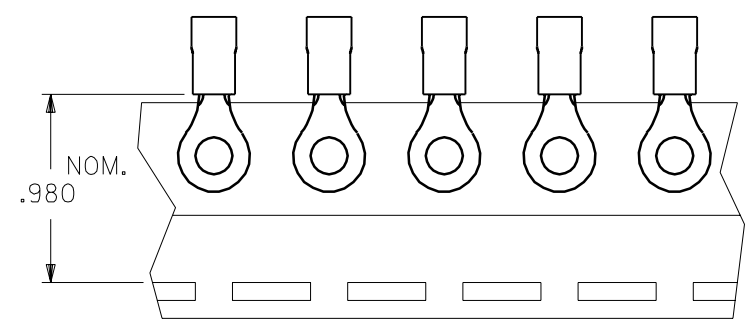


Avikrimp®
(Nylon Insulation)

Wire Range AWG (mm ²)	Stud Size S	Maximum Width W	Minimum Clearance C	Loose Piece Order No.	Mylar Tape Order No.	Maximum Length L	Loose Piece Order No.	Mylar Tape Order No.	Expanded Flare Order No.*	Expanded Flare on Mylar Tape Order No.*	Maximum Length L
10-12 (5.00-3.30)	5-6 (3-3.5)	7.40 (.292)	7.80 (.306)	19193-0128	19193-0129	18.80 (.741)	19073-0216	19073-0218	19073-0220	19073-0221	27.00 (1.047)
		9.80 (.385)	7.70 (.303)	19193-0103	19193-0105	19.90 (.785)	19073-0160	19073-0162	19073-0163	19073-0164	27.70 (1.091)
	8 (4)	7.40 (.292)	7.80 (.306)	19193-0130	19193-0131	18.80 (.741)	19073-0222	19073-0224	19073-0225	19073-0226	27.00 (1.047)
		9.80 (.385)	7.70 (.303)	19193-0106	19193-0108	19.90 (.785)	19073-0165	19073-0167	19073-0168	19073-0169	27.70 (1.091)
	10 (-)	9.80 (.385)	7.70 (.303)	19193-0109	19193-0111	19.90 (.785)	19073-0170	19073-0172	19073-0173	19073-0174	27.70 (1.091)
		13.70 (.540)	10.00 (.393)	19193-0114	19193-0115	24.20 (.952)	19073-0179	19073-0180	19073-0181	19073-0184	32.00 (1.258)
		15.20 (.598)	14.40 (.566)				19073-0227	19073-0228	19073-0229	19073-0230	34.60 (1.362)
	1/4 (6)	13.70 (.540)	10.00 (.393)	19193-0116	19193-0118	24.20 (.952)	19073-0188	19073-0190	19073-0191	19073-0194	32.00 (1.258)
		15.20 (.598)	14.40 (.566)	19193-0134	19193-0135	26.80 (1.056)	19073-0231	19073-0232	19073-0233	19073-0234	34.60 (1.362)
	5/16 (8)	13.70 (.540)	10.00 (.393)	19193-0120	19193-0122	24.20 (.952)	19073-0200	19073-0201	19073-0202	19073-0205	32.00 (1.258)
		15.20 (.598)	14.40 (.566)	19193-0141	19193-0142	26.80 (1.056)	19073-0242	19073-0243	19073-0244	19073-0245	34.60 (1.362)
	3/8 (9)	15.20 (.598)	14.40 (.566)	19193-0137	19193-0139	26.80 (1.056)	19073-0236	19073-0237	19073-0238	19073-0239	34.60 (1.362)
		19.30 (.760)	15.50 (.611)	19193-0097		32.50 (1.280)					
	7/16 (11)	19.30 (.760)	15.50 (.611)	19193-0099	19193-0100	32.50 (1.280)					
	1/2 (12)	19.30 (.760)	15.50 (.611)	19193-0094	19193-0095	32.50 (1.280)	19073-0145	19073-0146	19073-0147		40.30 (1.586)

* For use with heavier wire insulation. Maximum wire insulation (.255") 6.50mm.

MATERIAL NUMBER	ALTERNATE NUMBER	STUD SIZE	"S"	"W"	"C"	"L"	"I.D."	PACKAGING
190730036	AA-832-04	04	.119(3.02)	.25(6.5)	.24(6.1)	.81(20.5)	.062(1.57)	LOOSE PIECE
190730038	AA-832-06	06	.146(3.71)	.25(6.5)	.24(6.1)	.81(20.5)	.062(1.57)	
190730042	AA-832-08	08	.173(4.39)	.25(6.5)	.24(6.1)	.81(20.5)	.062(1.57)	
190730046	AA-833-04	04	.119(3.02)	.27(6.9)	.24(6.1)	.82(20.7)	.062(1.57)	
190730047	AA-833-06	06	.146(3.71)	.27(6.9)	.24(6.1)	.82(20.7)	.062(1.57)	
190730048	AA-833-08	08	.173(4.39)	.27(6.9)	.24(6.1)	.82(20.7)	.062(1.57)	
190730049	AA-833-10	10	.198(5.03)	.27(6.9)	.24(6.1)	.82(20.7)	.062(1.57)	
190730001	AA-8111-02	02	.094(2.38)	.19(4.8)	.17(4.4)	.72(18.2)	.054(1.37)	
190730003	AA-8111-04	04	.119(3.02)	.19(4.8)	.17(4.4)	.72(18.2)	.054(1.37)	
190730037	AA-832-04T	04	.119(3.02)	.25(6.5)	.24(6.1)	.81(20.5)	.062(1.57)	
190730040	AA-832-06T	06	.146(3.71)	.25(6.5)	.24(6.1)	.81(20.5)	.062(1.57)	
190730043	AA-832-08T	08	.173(4.39)	.25(6.5)	.24(6.1)	.81(20.5)	.062(1.57)	
190730050	AA-833-10T	10	.198(5.03)	.27(6.9)	.24(6.1)	.82(20.7)	.062(1.57)	
190730002	AA-8111-02T	02	.094(2.38)	.19(4.8)	.17(4.4)	.72(18.2)	.054(1.37)	
190730004	AA-8111-04T	04	.119(3.02)	.19(4.8)	.17(4.4)	.72(18.2)	.054(1.37)	



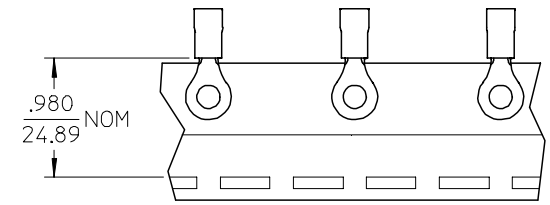
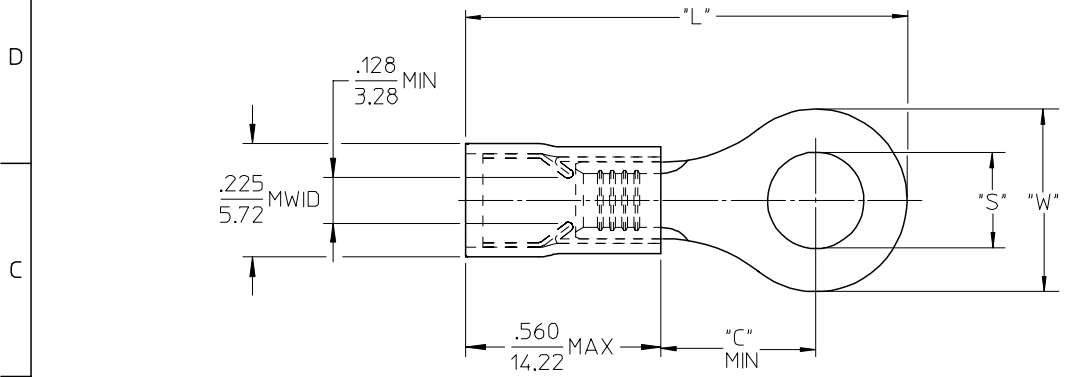
- NOTES:
1. MATERIAL: COPPER
PLATING: ELECTROPLATE TIN
 2. FERRULE: TIN-PLATED BRASS
 3. INSULATION: RED NYLON
 4. MWID=MAXIMUM WIRE INSULATION DIA.
 5. ALL DIMENSIONS IN INCHES (MM).

CUSTOMER DRAWING

DIMENSIONS SHOWN (METRIC) INCH		REVISE ONLY ON CAD SYSTEM																			
UNLESS OTHERWISE SPECIFIED TOLERANCES: ANGULAR ± 1/2°		TITLE RING TONGUE TERMINAL 22-18 AWG AVIKRIMP, 800-SERIES																			
<table border="1"> <thead> <tr> <th></th> <th>INCH</th> <th>METRIC</th> </tr> </thead> <tbody> <tr> <td>3 PLACE</td> <td>± .005</td> <td>± ---</td> </tr> <tr> <td>2 PLACE</td> <td>± .01</td> <td>± 0.13</td> </tr> <tr> <td>1 PLACE</td> <td>± ---</td> <td>± 0.25</td> </tr> </tbody> </table>			INCH	METRIC	3 PLACE	± .005	± ---	2 PLACE	± .01	± 0.13	1 PLACE	± ---	± 0.25	<table border="1"> <tr> <td>SHEET NO.</td> <td>DATE</td> </tr> <tr> <td>1 OF 1</td> <td>00/09/08</td> </tr> </table>		SHEET NO.	DATE	1 OF 1	00/09/08		
	INCH	METRIC																			
3 PLACE	± .005	± ---																			
2 PLACE	± .01	± 0.13																			
1 PLACE	± ---	± 0.25																			
SHEET NO.	DATE																				
1 OF 1	00/09/08																				
DRAFT WHERE APPLICABLE MUST REMAIN WITHIN DIMENSIONS		PART NO. SEE TABLE																			
<table border="1"> <tr> <td>DRWG. BY</td> <td>HEB</td> <td>CHK'D. BY</td> <td>RWD</td> </tr> <tr> <td>APP'D. BY</td> <td>RWD</td> <td>SCALE</td> <td>NO:NE</td> </tr> </table>		DRWG. BY	HEB	CHK'D. BY	RWD	APP'D. BY	RWD	SCALE	NO:NE	<table border="1"> <tr> <td>DRWG. NO.</td> <td>SD-19073-004</td> </tr> <tr> <td>FILE NAME</td> <td>SD19073004 DGN</td> </tr> <tr> <td colspan="2">THIS DRAWING CONTAINS INFORMATION THAT IS PROPRIETARY TO MOLEX-ETC INC. AND SHOULD NOT BE USED WITHOUT WRITTEN PERMISSION.</td> </tr> <tr> <td>DIV.</td> <td>ET</td> </tr> <tr> <td>SIZE</td> <td>B</td> </tr> </table>		DRWG. NO.	SD-19073-004	FILE NAME	SD19073004 DGN	THIS DRAWING CONTAINS INFORMATION THAT IS PROPRIETARY TO MOLEX-ETC INC. AND SHOULD NOT BE USED WITHOUT WRITTEN PERMISSION.		DIV.	ET	SIZE	B
DRWG. BY	HEB	CHK'D. BY	RWD																		
APP'D. BY	RWD	SCALE	NO:NE																		
DRWG. NO.	SD-19073-004																				
FILE NAME	SD19073004 DGN																				
THIS DRAWING CONTAINS INFORMATION THAT IS PROPRIETARY TO MOLEX-ETC INC. AND SHOULD NOT BE USED WITHOUT WRITTEN PERMISSION.																					
DIV.	ET																				
SIZE	B																				

A	VOIDS AA-CD-801-02 ETC2001-0188 2000/09/08 HEB
LTR.	REVISIONS

MATERIAL NUMBER	ENG. NO.	MATERIAL NUMBER TAPE MOUNTED	ENG. NO.	STUD SIZE	"S" ±.005	"W" MAX	"C" MIN	"L" MAX
190730145	C-801-12	190730146	C-801-12T	12	.515 (13.08)	.760 (19.30)	.611 (15.52)	1.580 (40.13)
190730148	C-801-14	-----	-----	14	.265 (6.73)			
190730150	C-801-38	-----	-----	38	.390 (9.91)			
190730152	C-801-56	-----	-----	56	.328 (8.33)			
190730154	C-801-76	-----	-----	76	.453 (11.51)			
190730156	C-828-04	190730157	C-828-04T	04	.119 (3.02)	.385 (9.78)	.303 (7.70)	1.091 (27.71)
190730160	C-828-06	190730162	C-828-06T	06	.146 (3.71)			
190730165	C-828-08	190730167	C-828-08T	08	.173 (4.39)			
190730170	C-828-10	190730172	C-828-10T	10	.198 (5.03)			
190730175	C-828-14	-----	-----	14	.265 (6.73)			



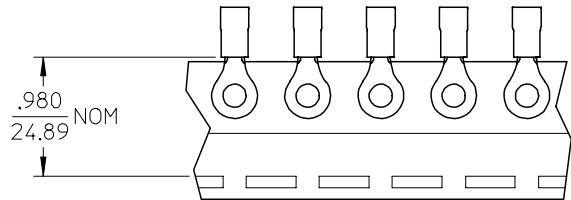
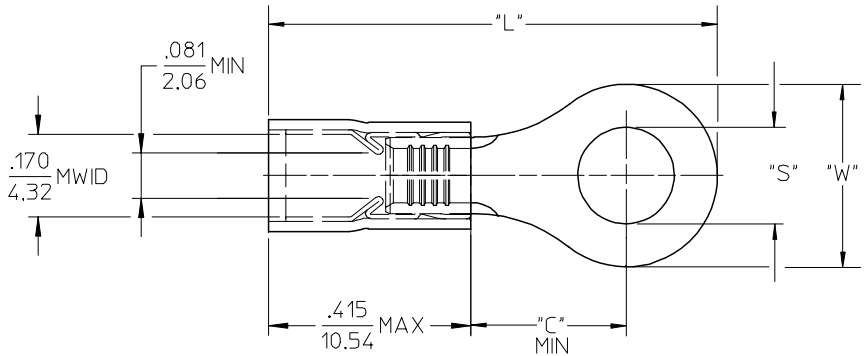
SALES DRAWING

- NOTES:
1. MATERIAL: COPPER (.040/1.02) THICK. PLATING: ELECTROPLATE TIN
 2. FERRULE: TIN PLATED BRASS
 3. INSULATION: YELLOW NYLON
 4. MWID=MAXIMUM WIRE INSULATION DIA.
 5. ALL DIMENSIONS IN INCHES (MM).
 6. WIRE SIZE: 12-10 AWG
4.0-6.0 MM²

EC NO: ETC2004-0123 DRWN:DMYRICK 2004/01/05 CHKD:SBEITZEL 2004/01/05 APPR:RDEROSS 2004/01/06	QUALITY SYMBOLS ▽ = 0 ▽ = 0	GENERAL TOLERANCES (UNLESS SPECIFIED)		SCALE 4:1	DESIGN UNITS INCH	THIRD ANGLE PROJECTION	REVISE ON CAD ONLY
				DIMENSION STYLE IN/MM		TITLE RING TONGUE TERMINAL AVIKRIMP, 800-SERIES 12-10 AWG	
		4 PLACES ± --- ± ---		DRAWN BY DMYRICK	DATE 03/12/15	MOLEX INCORPORATED	
		3 PLACES ± --- ± .005		CHECKED BY SBEITZEL	DATE 03/12/15	MATERIAL NO. SEE CHART	DOCUMENT NO. SD-19073-007
		2 PLACES ± 0.13 ± .01		APPROVED BY RDEROSS DATE 03/12/15			
		1 PLACE ± 0.25 ± ---		SHEET NO. 1 OF 1			
		ANGULAR ± 1 °		THIS DRAWING CONTAINS INFORMATION THAT IS PROPRIETARY TO MOLEX INCORPORATED AND SHOULD NOT BE USED WITHOUT WRITTEN PERMISSION			
		DRAFT WHERE APPLICABLE MUST REMAIN WITHIN DIMENSIONS					

19073

MATERIAL NUMBER	ENG. NO.	MATERIAL NUMBER TAPE MOUNTED	ENG. NO.	STUD SIZE	"S" ±.005	"W" MAX	"C" MIN	"L" MAX
190730081	BB-837-04	-----	-----	04	.119 (3.02)	.322 (8.18)	.285 (7.24)	.885 (22.48)
190730083	BB-837-06	190730084	BB-837-06T	06	.146 (3.71)			
190730085	BB-837-08	190730086	BB-837-08T	08	.173 (4.39)			
190730087	BB-837-10	190730088	BB-823-10T	10	.198 (5.03)			
190730302	BB-839-06	190730093	BB-839-06T	06	.146 (3.71)	.352 (8.94)	.310 (7.87)	.936 (23.77)
190730094	BB-839-08	190730096	BB-839-08T	08	.173 (4.39)			
190730097	BB-839-10	190730099	BB-839-10T	10	.198 (5.03)			

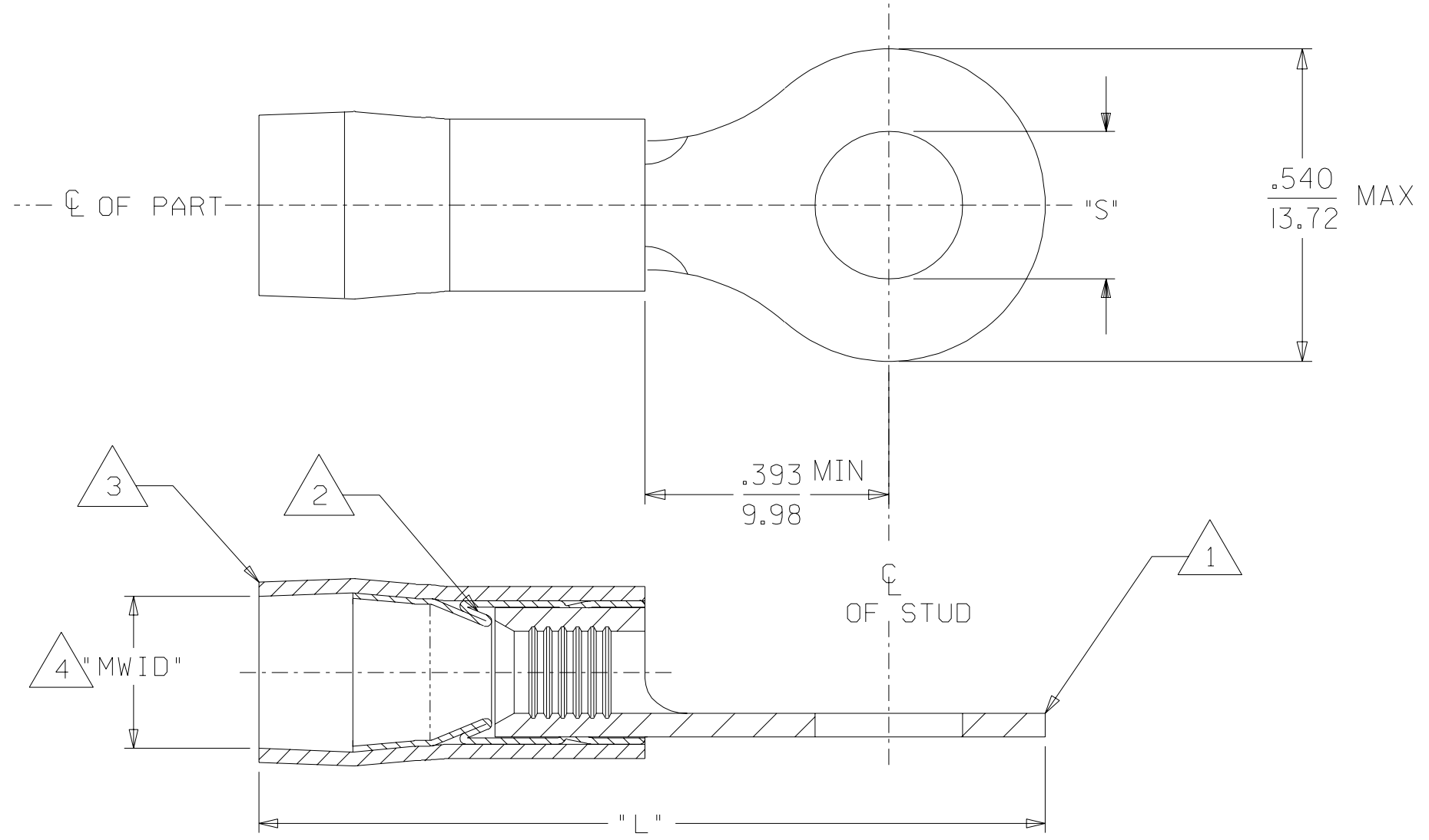
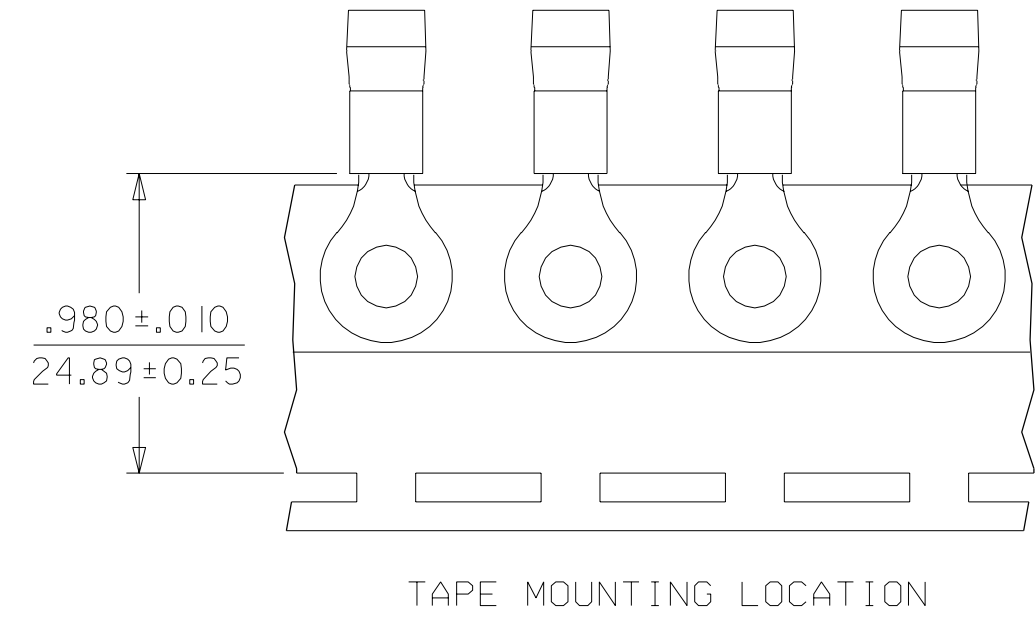


SALES DRAWING

- NOTES:
1. MATERIAL: COPPER (.031/0.79) THICK
PLATING: ELECTROPLATE TIN
 2. FERRULE: TIN-PLATED BRASS
 3. INSULATION: BLUE NYLON
 4. MWID=MAXIMUM WIRE INSULATION DIA.
 5. ALL DIMENSIONS IN INCHES (MM).
 6. WIRE SIZE: 16-14 AWG
1.0-2.5 MM²

EC NO: ETC2004-0123 DRWN:DMYRICK 2004/01/05 CHKD:SBEITZEL 2004/01/05 APPR:RDEROSS 2004/01/06	QUALITY SYMBOLS	GENERAL TOLERANCES (UNLESS SPECIFIED)		SCALE 4:1	DESIGN UNITS INCH	THIRD ANGLE PROJECTION	REVISE ON CAD ONLY	
	DESCRIPTION ▼ = 0 ▽ = 0		mm	INCH	DIMENSION STYLE IN/MM		TITLE	
		4 PLACES	± ---	± ---	DRAWN BY DMYRICK	DATE 03/12/15	RING TONGUE TERMINAL AVIKRIMP, 800-SERIES 16-14 AWG	
		3 PLACES	± ---	± .005	CHECKED BY SBEITZEL	DATE 03/12/15	MOLEX INCORPORATED	
	2 PLACES	± 0.13	± .01	APPROVED BY RDEROSS	DATE 03/12/15	MATERIAL NO. SEE CHART	DOCUMENT NO. SD-19073-006	
	1 PLACE	± 0.25	± ---	DRAFT WHERE APPLICABLE MUST REMAIN WITHIN DIMENSIONS		SHEET NO. 1 OF 1		
		ANGULAR ± 1 °		THIS DRAWING CONTAINS INFORMATION THAT IS PROPRIETARY TO MOLEX INCORPORATED AND SHOULD NOT BE USED WITHOUT WRITTEN PERMISSION				

MATERIAL NUMBER	ENGINEERING NUMBER	STUD SIZE	MAX "S"	"MWID"	MAX "L"	PACKAGING
190730182	C-830-10XLBK	10	.214	.233	1.36	LOOSE PIECE
190730192	C-830-14XLBK	*	.278			
190730203	C-830-56XLBK	*	.340			
190730272	C-830-10XXBX	10	.214	.320	1.34	LOOSE PIECE
190730273	C-830-14XXBK	*	.278			
190730274	C-830-56XXBK	*	.340			
190730185	C-830-10XX	10	.214	.320	1.34	LOOSE PIECE
190730195	C-830-14XX	*	.278			
190730206	C-830-56XX	*	.340			
190730183	C-830-10XLBKT	10	.214	.233	1.36	TAPE MOUNT
190730193	C-830-14XLBKT	*	.278			
190730204	C-830-56XLBKT	*	.340			
190730272	C-830-10XXBXT	10	.214	.320	1.34	TAPE MOUNT
190730273	C-830-14XXBKT	*	.278			
190730274	C-830-56XXBKT	*	.340			
190730185	C-830-10XXT	10	.214	.320	1.34	TAPE MOUNT
190730195	C-830-14XXT	*	.278			
190730206	C-830-56XXT	*	.340			

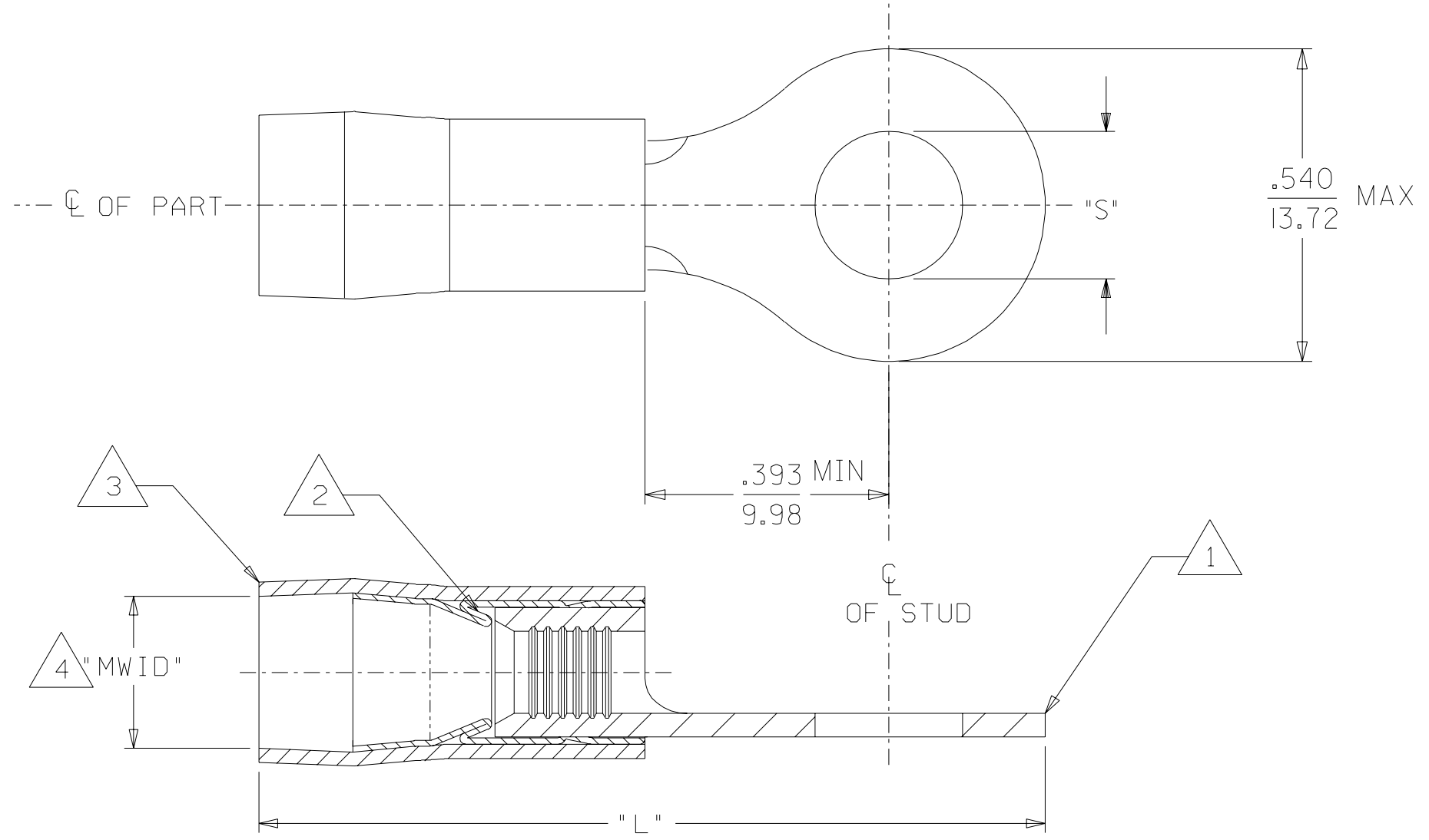
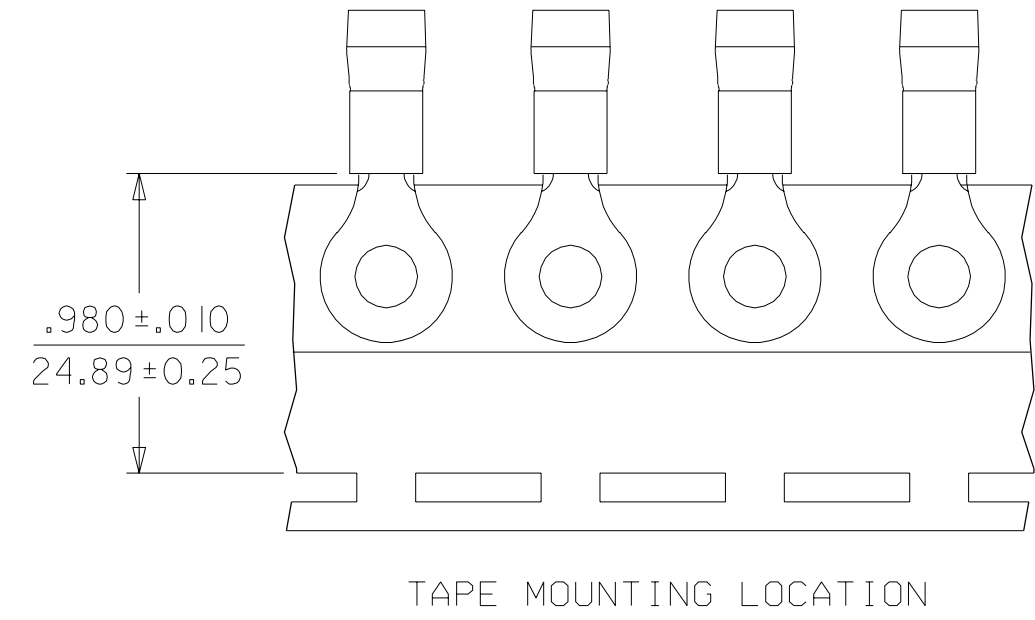


SALES DRAWING

- NOTES:
1. TERMINAL MATERIAL: BRASS
FINISH: ELECTRO-TIN
 2. FERRULE MATERIAL: BRASS
FINISH: ELECTRO-TIN.
 3. INSULATION MATERIAL: BLACK NYLON
 4. "MWID" = MAXIMUM WIRE INSULATION DIAMETER.

NEW RELEASE EC NO: ETC2002-0191 DRWN: BRE 02/01/18 CHK: HEB 02/01/18 APPR: RWD 02/01/18	QUALITY SYMBOLS	GENERAL TOLERANCES: (UNLESS SPECIFIED)		SCALE NO: NE	DESIGN UNITS	THIRD ANGLE PROJECTION	DIMENSIONS:	SHT	REV					
	MAJOR = 0	mm	INCH	mm	INCH	<input type="checkbox"/> mm ONLY	<input checked="" type="checkbox"/> INCH		REVISE ON CAD ONLY					
	CRITICAL C = 0	4 PLACES ±0.	±.	3 PLACES ±0.	±.	2 PLACES ±0.	±.	1 PLACE ±0.	±.					
	ANGULAR: ± °	DRAFT WHERE APPLICABLE MUST REMAIN WITHIN DIMENSIONS		THIS DRAWING CONTAINS INFORMATION THAT IS PROPRIETARY TO MOLEX INCORPORATED AND SHOULD NOT BE USED WITHOUT WRITTEN PERMISSION.		SIZE C								
DESCRIPTION	TITLE: AVIKRIMP RAILROAD RING TONGUE TERMINALS 12-10 AWG		DRAWN BY & DATE: BRE 02/01/16		CHECKED BY & DATE: HEB 02/01/16		APPROVED BY & DATE: RWD 02/01/16		MATERIAL NO. SEE CHART		DRAWING NO. SD-19058-006		SHEET NO. 1 OF 1	

MATERIAL NUMBER	ENGINEERING NUMBER	STUD SIZE	MAX "S"	"MWID"	MAX "L"	PACKAGING
190730182	C-830-10XLBK	10	.214	.233	1.36	LOOSE PIECE
190730192	C-830-14XLBK	*	.278			
190730203	C-830-56XLBK	*	.340			
190730272	C-830-10XXBX	10	.214	.320	1.34	LOOSE PIECE
190730273	C-830-14XXBK	*	.278			
190730274	C-830-56XXBK	*	.340			
190730185	C-830-10XX	10	.214	.320	1.34	LOOSE PIECE
190730195	C-830-14XX	*	.278			
190730206	C-830-56XX	*	.340			
190730183	C-830-10XLBKT	10	.214	.233	1.36	TAPE MOUNT
190730193	C-830-14XLBKT	*	.278			
190730204	C-830-56XLBKT	*	.340			
190730272	C-830-10XXBXT	10	.214	.320	1.34	TAPE MOUNT
190730273	C-830-14XXBKT	*	.278			
190730274	C-830-56XXBKT	*	.340			
190730185	C-830-10XXT	10	.214	.320	1.34	TAPE MOUNT
190730195	C-830-14XXT	*	.278			
190730206	C-830-56XXT	*	.340			



SALES DRAWING

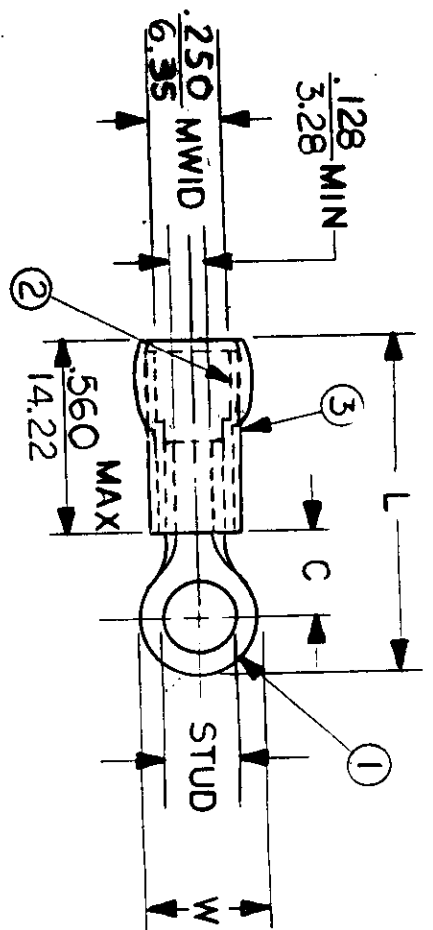
- NOTES:
1. TERMINAL MATERIAL: BRASS
FINISH: ELECTRO-TIN
 2. FERRULE MATERIAL: BRASS
FINISH: ELECTRO-TIN.
 3. INSULATION MATERIAL: BLACK NYLON
 4. "MWID" = MAXIMUM WIRE INSULATION DIAMETER.

NEW RELEASE EC NO: ETC2002-0191 DRWN: BRE 02/01/18 CHK: HEB 02/01/18 APPR: RWD 02/01/18	QUALITY SYMBOLS MAJOR = 0 CRITICAL = 0	GENERAL TOLERANCES: (UNLESS SPECIFIED) mm INCH 4 PLACES ±0. ±. 3 PLACES ±0. ±. 2 PLACES ±0. ±. 1 PLACE ±0. ±. ANGULAR: ± °	SCALE NO: NE DESIGN UNITS <input type="checkbox"/> mm <input checked="" type="checkbox"/> INCH THIRD ANGLE PROJECTION <input type="checkbox"/> mm ONLY	DIMENSIONS: <input type="checkbox"/> mm <input checked="" type="checkbox"/> INCH	SHT REV REVISE ON CAD ONLY	
	DRAWN BY & DATE BRE 02/01/16	TITLE: AVIKRIMP RAILROAD RING TONGUE TERMINALS 12-10 AWG		MOLEX INCORPORATED		
	CHECKED BY & DATE HEB 02/01/16	APPROVED BY & DATE RWD 02/01/16		CAD FILENAME SD-19058-006 .DGN	MATERIAL NO. SEE CHART	DRAWING NO. SD-19058-006
	DRAFT WHERE APPLICABLE MUST REMAIN WITHIN DIMENSIONS		THIS DRAWING CONTAINS INFORMATION THAT IS PROPRIETARY TO MOLEX INCORPORATED AND SHOULD NOT BE USED WITHOUT WRITTEN PERMISSION.			SHEET NO. 1 OF 1 SIZE C

NOTES:

- ① MAT'L: COPPER (STOCK TRN. $\frac{.040}{1.02}$)
 - ② PLATING: ELECTRO TIN (.0003 MIN) TIN-PLATED BRASS NON-FUNNEL FERRULE
 - ③ NYLON INSULATION (COLOR CODED YELLOW)
- STUD SIZES: ($\pm .005$)
- | | |
|------------|-----------|
| 02 = .094 | 413 = 413 |
| 04 = .119 | 76 = 453 |
| 06 = .146 | 12 = 515 |
| 08 = .173 | |
| 10 = .198 | |
| 14 = .265 | |
| 56 = .328 | |
| 38 = .390 | |
| 209 = .209 | |

FILE NO. C-CD-801-05



"UL" LISTING #E32244
 "CSA" LISTING #18689
 WIRE SIZE: 12 - 10 AWG²
 4.0 - 6.0 MM²

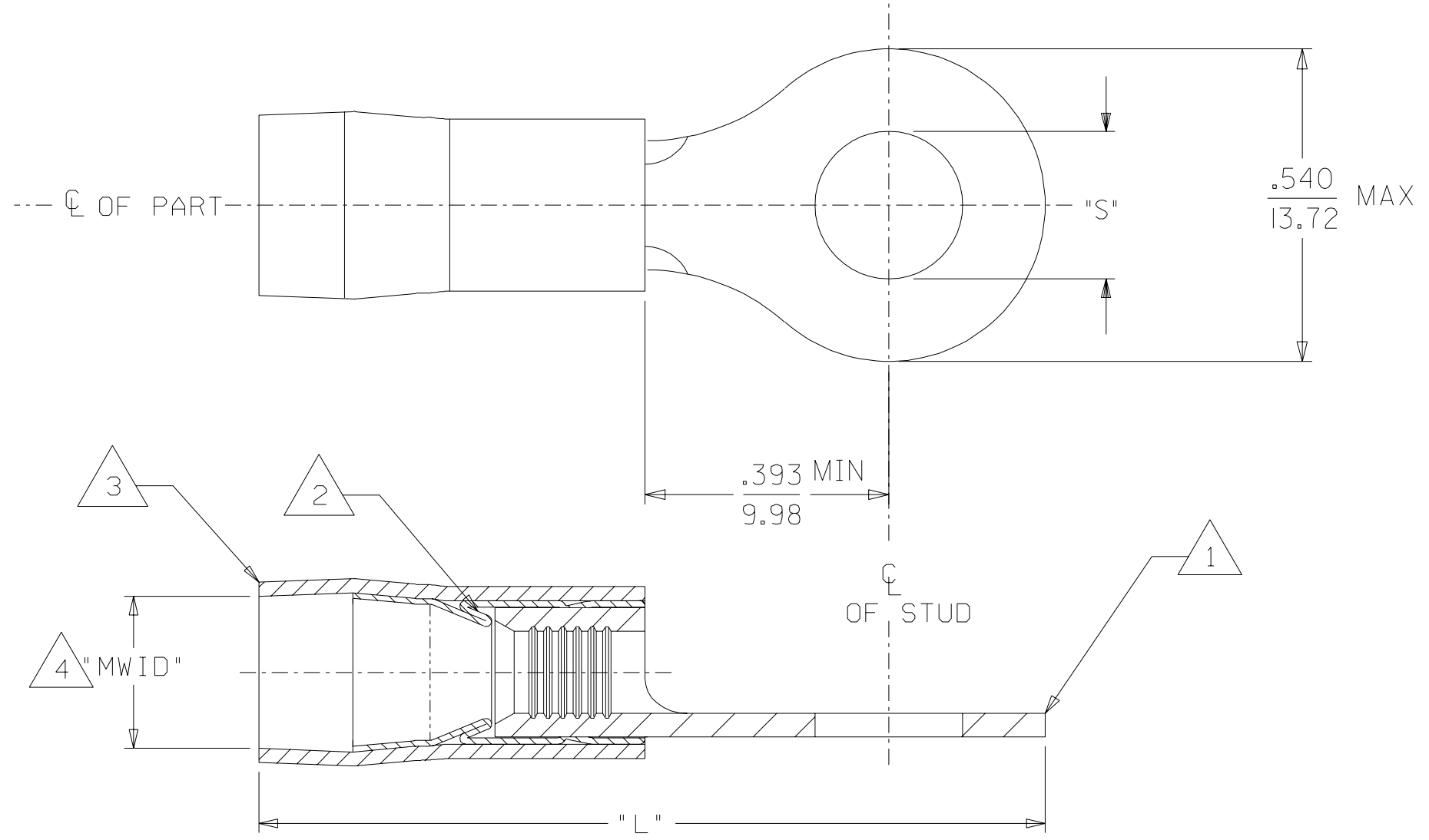
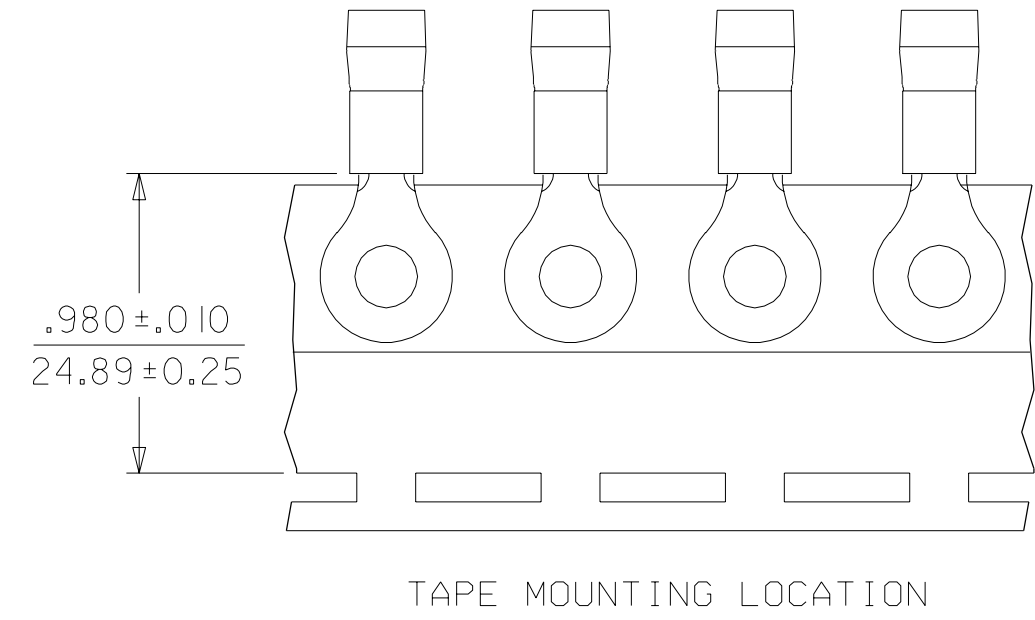
ALL DIMENSIONS = $\frac{\text{INCHES}}{\text{MM}}$ (MWID) = DENOTES MAXIMUM WIRE INSULATION DIAMETER

PART NUMBER	"W" $\pm .010$	"C" MIN.	"L" MAX.	SCALE:	DATE	TITLE:	DWG. NO.	CUSTOMER DWG.
C-801-	.750 19.05	.611 15.51	1.580 40.13	DRWN. BY: EMF CHKD. BY:	9-22-87	RING TONGUE TERMINAL AVIKRIMP 800-SERIES	A	
C-828-	.375 9.53	.303 7.70	1.091 27.71	NTS				
C-830-	.530 13.46	.393 9.98	1.258 31.95	DATE				
C-836-	.282 7.16	.306 7.77	1.047 26.59	DATE				
C-840-	.592 15.04	.466 11.83	1.362 34.59	DATE				



INCORPORATED

MATERIAL NUMBER	ENGINEERING NUMBER	STUD SIZE	MAX "S"	"MWID"	MAX "L"	PACKAGING
190730182	C-830-10XLBK	10	.214	.233	1.36	LOOSE PIECE
190730192	C-830-14XLBK	*	.278			
190730203	C-830-56XLBK	*	.340			
190730272	C-830-10XXBX	10	.214	.320	1.34	LOOSE PIECE
190730273	C-830-14XXBK	*	.278			
190730274	C-830-56XXBK	*	.340			
190730185	C-830-10XX	10	.214	.320	1.34	LOOSE PIECE
190730195	C-830-14XX	*	.278			
190730206	C-830-56XX	*	.340			
190730183	C-830-10XLBKT	10	.214	.233	1.36	TAPE MOUNT
190730193	C-830-14XLBKT	*	.278			
190730204	C-830-56XLBKT	*	.340			
190730272	C-830-10XXBXT	10	.214	.320	1.34	TAPE MOUNT
190730273	C-830-14XXBKT	*	.278			
190730274	C-830-56XXBKT	*	.340			
190730185	C-830-10XXT	10	.214	.320	1.34	TAPE MOUNT
190730195	C-830-14XXT	*	.278			
190730206	C-830-56XXT	*	.340			



SALES DRAWING

- NOTES:
1. TERMINAL MATERIAL: BRASS
FINISH: ELECTRO-TIN
 2. FERRULE MATERIAL: BRASS
FINISH: ELECTRO-TIN.
 3. INSULATION MATERIAL: BLACK NYLON
 4. "MWID" = MAXIMUM WIRE INSULATION DIAMETER.

NEW RELEASE EC NO: ETC2002-0191 DRWN: BRE 02/01/18 CHK: HEB 02/01/18 APPR: RWD 02/01/18	QUALITY SYMBOLS MAJOR = 0 CRITICAL = 0	GENERAL TOLERANCES: (UNLESS SPECIFIED)	SCALE: NO: NE DESIGN UNITS: <input type="checkbox"/> mm <input checked="" type="checkbox"/> INCH	DIMENSIONS: <input type="checkbox"/> mm <input checked="" type="checkbox"/> INCH <input type="checkbox"/> mm ONLY	SHT REV	
	4 PLACES ±0. ±. 3 PLACES ±0. ±. 2 PLACES ±0. ±. 1 PLACE ±0. ±.	ANGULAR: ± °	DRAFT WHERE APPLICABLE MUST REMAIN WITHIN DIMENSIONS	DRAWN BY & DATE BRE 02/01/16	CHECKED BY & DATE HEB 02/01/16	APPROVED BY & DATE RWD 02/01/16
	TITLE: AVIKRIMP RAILROAD RING TONGUE TERMINALS 12-10 AWG			MOLEX INCORPORATED		
	CAD FILENAME: SD-19058-006 .DGN			MATERIAL NO. SEE CHART	DRAWING NO. SD-19058-006	SHEET NO. 1 OF 1

THIS DRAWING CONTAINS INFORMATION THAT IS PROPRIETARY TO MOLEX INCORPORATED AND SHOULD NOT BE USED WITHOUT WRITTEN PERMISSION.