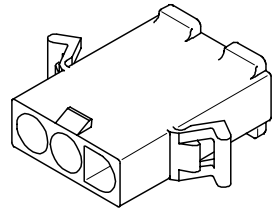
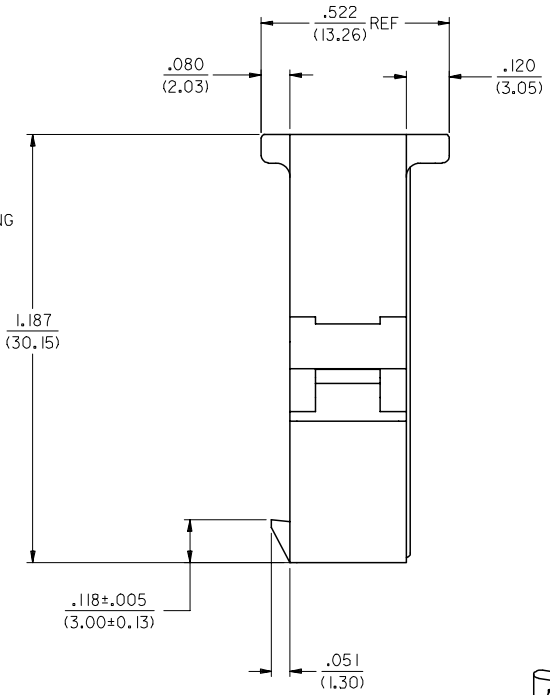
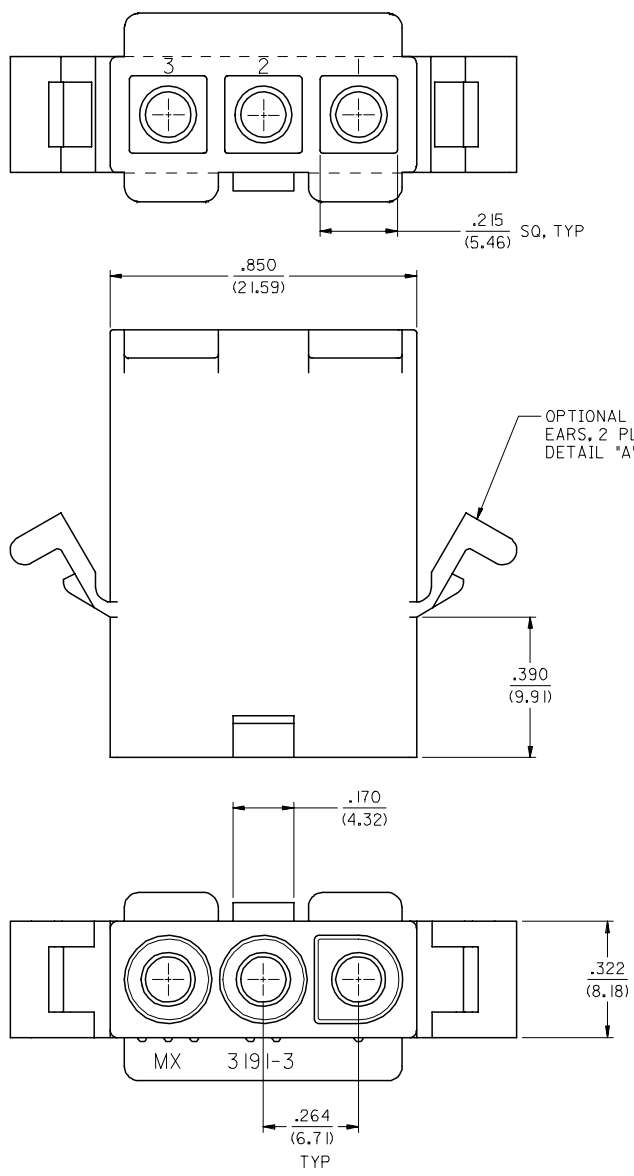


13 12 11 10 9 8 7 6 5 4 3 2 1

J
I
H
G
F
E
D
C
B
A



PLUG

3	K
2	K
1	K
SHT. REV.	

UPDATE REVISIONS EC NO: UCP2007-2085 DRAWN/PR/DER 2007/04/13 CHKD: AEL/HAG 2007/04/16 APPR: FSM/TH 2007/04/19 REV DESCRIPTION	QUALITY SYMBOLS = 0 = 0	GENERAL TOLERANCES (UNLESS SPECIFIED) <table border="1"> <thead> <tr> <th></th> <th>mm</th> <th>INCH</th> </tr> </thead> <tbody> <tr> <td>4 PLACES</td> <td>± .010</td> <td>± .0004</td> </tr> <tr> <td>3 PLACES</td> <td>± .015</td> <td>± .0006</td> </tr> <tr> <td>2 PLACES</td> <td>± 0.25</td> <td>± .010</td> </tr> <tr> <td>1 PLACE</td> <td>± 0.38</td> <td>± .015</td> </tr> </tbody> </table> ANGULAR ±1/2°		mm	INCH	4 PLACES	± .010	± .0004	3 PLACES	± .015	± .0006	2 PLACES	± 0.25	± .010	1 PLACE	± 0.38	± .015	DIMENSION STYLE IN/MM DRAWN BY DATE JWC 1996/01/08 CHECKED BY DATE RW 1996/01/08 APPROVED BY DATE RAS 1996/01/08 MATERIAL NO. DOCUMENT NO.	SCALE 4:1 DESIGN UNITS INCH THIRD ANGLE PROJECTION	TITLE .093/(2.36) HOUSING PLUG AND RECEPTACLE, 3 CKT .264/(6.71) CTRS. molex MOLEX INCORPORATED	SHEET NO. 1 OF 3
		mm	INCH																		
	4 PLACES	± .010	± .0004																		
	3 PLACES	± .015	± .0006																		
2 PLACES	± 0.25	± .010																			
1 PLACE	± 0.38	± .015																			
DRAFT WHERE APPLICABLE MUST REMAIN WITHIN DIMENSIONS		SEE CHART	SD-3191-3*	THIS DRAWING CONTAINS INFORMATION THAT IS PROPRIETARY TO MOLEX INCORPORATED AND SHOULD NOT BE USED WITHOUT WRITTEN PERMISSION																	

12 11 10 9 8 7 6 5 4 3 2 1

13 12 11 10 9 8 7 6 5 4 3 2 1

PLUG	
PART NO.	ENG. NO.
19-09-2038	3191-3P
19-09-2039	3191-3P1
19-09-2037	3191-3P-201
19-09-2036	3191-3P1-201
19-09-1038	3191-3P1RD OBSOLETE
19-09-3032	3191-3PRD OBSOLETE
19-09-3033	3191-3PBU

RECEPTACLE	
PART NO.	ENG. NO.
19-09-1039	3191-3R1
19-09-1036	3191-3R1-201
19-09-3030	3191-3R1RD OBSOLETE

LEGEND

3191-3****-*

CIRCUIT SIZE

P = PLUG
R = RECEPTACLE

EARS: BLANK = WITH PREBENT EARS (PLUG ONLY)
I = WITHOUT EARS

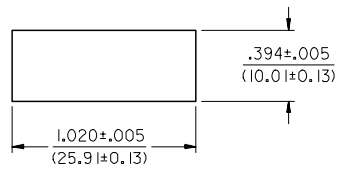
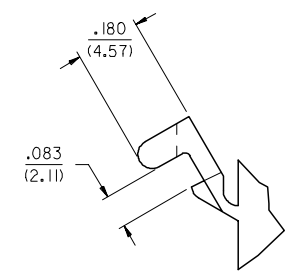
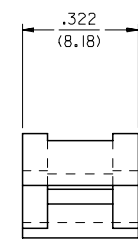
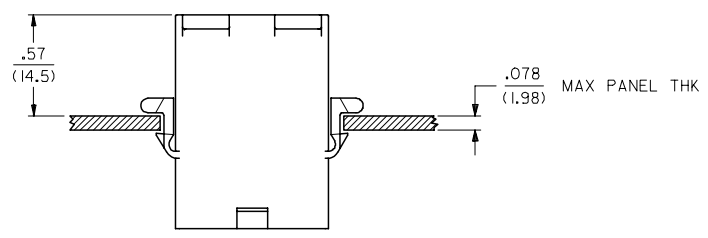
NOTES:

1. MATERIAL: SEE LEGEND
2. FINISH: NONE
3. PRODUCT SPECIFICATION: PS-02-08
4. PACKAGING SPECIFICATION: PK-3191-001
5. PARTS CONFORM TO CLASS B REQUIREMENTS OF COSMETIC SPECIFICATION PS-45499-002.

COLOR: BLANK = NATURAL COLOR

AM=AMBER BK=BLACK BU=BLUE
BN=BROWN GY=GRAY GN=GREEN
OR=ORANGE RD=RED YW=YELLOW
COLORS AVAILABLE ONLY IN 94V-2 MATERIAL

MATERIAL: BLANK=NYLON TYPE 6/6,94V-2
201=NYLON TYPE 6/6, 94V-0



RECOMMENDED HOLE CUTOUT

DETAIL "A"
PREBENT MOUNTING EAR
(SCALE 4:1)

OBS. - 1088/008/2007/04/13 EC NO: UICP2007-2085 DRAWN BY: UICP2007-2085 CHKD: AELHAG 2007/04/16 APPR: FSM TH 2007/04/19 REV: K	QUALITY SYMBOLS	GENERAL TOLERANCES (UNLESS SPECIFIED) <table border="1"> <tr><th colspan="2">mm</th><th colspan="2">INCH</th></tr> <tr><td>4 PLACES</td><td>± .010</td><td>± .004</td><td>± .001</td></tr> <tr><td>3 PLACES</td><td>± .015</td><td>± .005</td><td>± .002</td></tr> <tr><td>2 PLACES</td><td>± .025</td><td>± .010</td><td>± .004</td></tr> <tr><td>1 PLACE</td><td>± 0.38</td><td>± .015</td><td>± .006</td></tr> </table> ANGULAR ±1/2°	mm		INCH		4 PLACES	± .010	± .004	± .001	3 PLACES	± .015	± .005	± .002	2 PLACES	± .025	± .010	± .004	1 PLACE	± 0.38	± .015	± .006	DIMENSION STYLE IN/MM DRAWN BY: JWC DATE: 1996/01/08 CHECKED BY: RW DATE: 1996/01/08 APPROVED BY: RAS DATE: 1996/01/08	SCALE: --- DESIGN UNITS: INCH THIRD ANGLE PROJECTION	TITLE: .093/(2.36) HOUSINGS, PLUG AND RECEPTACLE, 3 CKT .264/(6.71) CTRS.
	mm		INCH																						
	4 PLACES		± .010	± .004	± .001																				
	3 PLACES		± .015	± .005	± .002																				
2 PLACES	± .025	± .010	± .004																						
1 PLACE	± 0.38	± .015	± .006																						
MATERIAL NO. SEE CHART	DOCUMENT NO. SD-3191-3*	SHEET NO. 3 OF 3																							
DRAFT WHERE APPLICABLE MUST REMAIN WITHIN DIMENSIONS			THIS DRAWING CONTAINS INFORMATION THAT IS PROPRIETARY TO MOLEX INCORPORATED AND SHOULD NOT BE USED WITHOUT WRITTEN PERMISSION																						
MOLEX INCORPORATED																									

12 11 10 9 8 7 6 5 4 3 2 1