

Series image - Reference only

EU RoHS ELV and RoHS Compliant	China RoHS
---	-------------------

Search Parts in this Series

19193 Series

Application Tooling

Global

Description

Putt Pump Dieless Head System

Manual Putt Pump Hydraulic System with Dies

Die Set (large) for the HHLS Hydraulic Crimper

Hand Crimp Tool

Product

0192860065

0192860117

0192900010

0640013900

Part Number: **0191930307**

Status: **Active**

Description: VersaKrimp™ Ring Tongue Terminal for 2 AWG Wire

Documents:

- Drawing (PDF)
- Related Catalog Page (PDF)

Order Products:

- Check Distributor Inventory
- Request Samples

○

Part Detail: [\(show all\)](#)

○ **General**

○ **Physical**

○ **Electrical**

○ **Material Info**

○ **Reference - Drawing Numbers**

General

Product Family	Ring and Spade Terminals
Series	19193
Comments	Type I Noninsulated; Class 2
Material - Plating Mating	Tin
Mil-Spec	AS20659-114
Mil-Spec	MS20659-114
Plating min: Mating (uin)	100
Plating min: Mating (um)	2.5
Plating min: Termination (uin)	100
Plating min: Termination (um)	2.5
Product Name	VersaKrimp™
Termination Interface: Style	Crimp or Compression
Type	Ring

Physical

Barrel Type	Closed - Brazed
Insulation	None
Material - Metal	Copper
Packaging Type	Box
Stud Size	3/8" (M9)
Wire Size AWG	2

Electrical

CSA	LR18689
UL	E32244

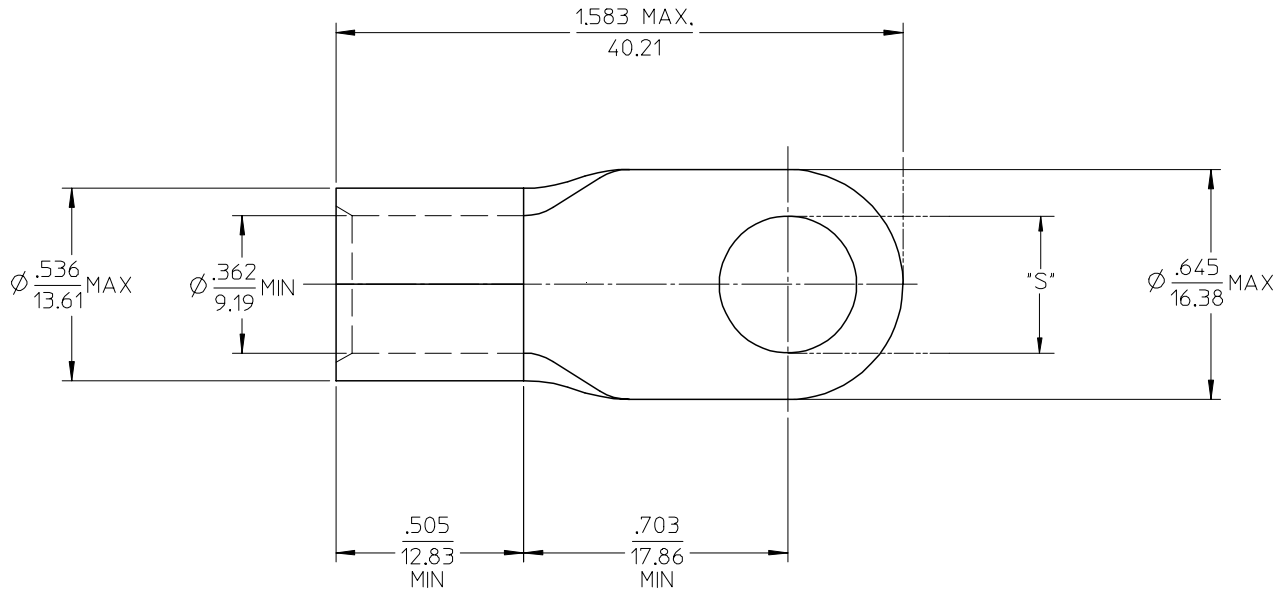
Material Info

Old Part Number	G-375-38
-----------------	----------

Reference - Drawing Numbers

Sales Drawing	SD-19193-028
---------------	--------------

MATERIAL NO. LOOSE PIECE	ENG. NO.	STUD SIZE	±.003 "S"	STOCK THICKNESS
191930303	G-375-10	10	.198	.075 (1.90)
191930305	G-375-14	1/4	.265	
191930309	G-375-56	5/16	.328	
191930307	G-375-38	3/8	.390	
191930311	G-375-76	7/16	.453	



SALES DRAWING

NOTE(S):

1. MATERIAL: COPPER
2. PLATING: ELECTROPLATE TIN
3. ALL DIMENSIONS IN INCHES/(MM).
4. WIRE SIZE: 2 AWG
35 MM²

REVISED/UPDATE TO MK STDS EC NO: ETC2003-0315 DRWN:DMYRICK 2003/08/20 CHKD:HEB 2003/08/21 APPR:RDEROSS 2003/08/21	DESCRIPTION	QUALITY SYMBOLS	GENERAL TOLERANCES (UNLESS SPECIFIED)	SCALE	DESIGN UNITS	THIRD ANGLE PROJECTION	REVISE ON CAD ONLY
		▼ = 0		mm	INCH		
		▽ = 0		4 PLACES ± --- ± ---	DIMENSION STYLE	TITLE	
				3 PLACES ± --- ± .005	IN/MM	RING TONGUE TERMINAL VERSAKRIMP 2 AWG	
	2 PLACES ± 0.13 ± .01	DRAWN BY	DATE	MATERIAL NO.	DOCUMENT NO.	SHEET NO.	
	1 PLACE ± 0.25 ± ---	DLM	03/07/11				MOLEX INCORPORATED
	ANGULAR ± 1/2°	CHECKED BY	DATE	THIS DRAWING CONTAINS INFORMATION THAT IS PROPRIETARY TO MOLEX INCORPORATED AND SHOULD NOT BE USED WITHOUT WRITTEN PERMISSION			
	DRAFT WHERE APPLICABLE	HEB	03/07/11				B
	MUST REMAIN WITHIN DIMENSIONS	APPROVED BY	DATE				
		RWD	03/07/11				