

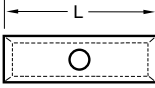
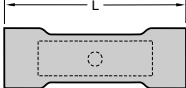
Distributed by:

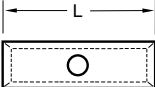
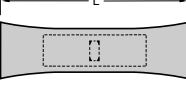
**JAMECO**<sup>®</sup>  
ELECTRONICS

**www.Jameco.com ♦ 1-800-831-4242**

The content and copyrights of the attached  
material are the property of its owner.

Jameco Part Number 516613

								
<b>Material:</b>						<b>Insulkrimp®</b>		
<b>Copper</b>						(PVC Insulation)		
Wire Range AWG	Loose Piece Order No.	Mylar Tape Order No.	ID	OD	Maximum Length	Loose Piece Order No.	Mylar Tape Order No.	Maximum Length
18-22 (0.80-0.35)	19189-0002	19189-0004	1.40 (.056)	3.40 (.135)	14.70 (.580)	19154-0004	19154-0006	24.40 (.960)
						19154-0011*	19154-0012*	26.30 (1.035)
14-16 (2.00-1.30)	19189-0008	19189-0010	2.10 (.083)	4.10 (.160)	14.70 (.580)	19154-0015	19154-0017	24.80 (.975)
						19154-0023*	19154-0024*	27.40 (1.080)
10-12 (5.00-3.30)	19189-0015	19189-0017	3.30 (.129)	5.60 (.220)	14.90 (.585)	19154-0028	19154-0030	28.80 (1.135)
						19154-0037*	19154-0038*	33.10 (1.305)

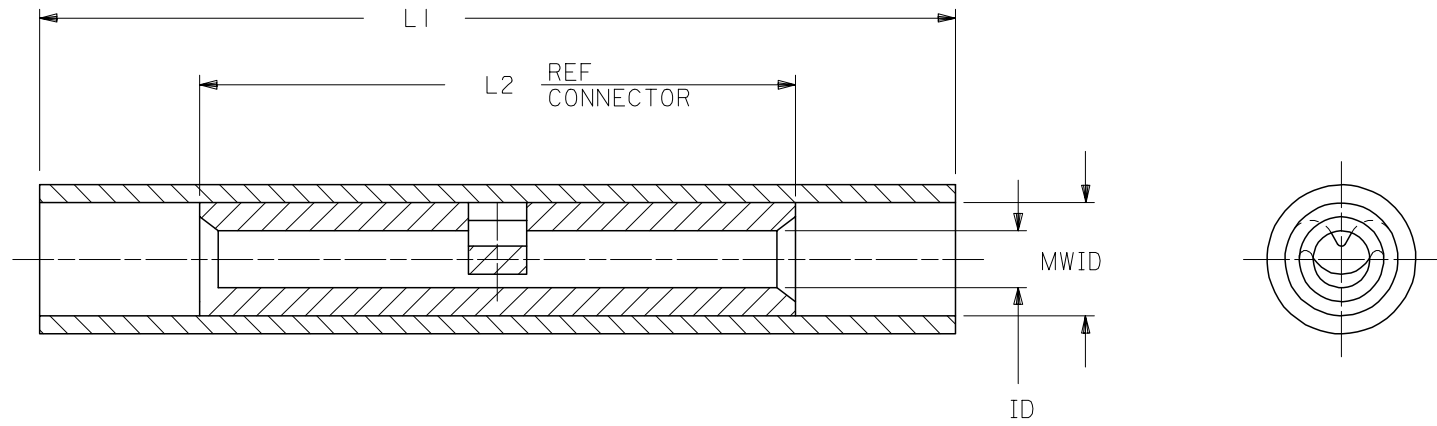
								
<b>Material:</b>						<b>Nylakrimp®</b>		
<b>Copper</b>						(Nylon Insulation)		
Wire Range AWG	Loose Piece Order No.	Mylar Tape Order No.	ID	OD	Maximum Length	Loose Piece Order No.	Mylar Tape Order No.	Maximum Length
18-22 (0.80-0.35)	19215-0009*	19215-0011*	1.50 (.059)	3.30 (.130)	17.10 (.675)	19202-0013*	19202-0016*	26.30 (1.035)
14-16 (2.00-1.30)	19215-0018*	19215-0115*	2.30 (.091)	4.10 (.160)	17.10 (.675)	19202-0031*	19202-0035*	27.40 (1.080)
10-12 (5.00-3.30)	19215-0028*	19215-0030*	3.50 (.138)	5.70 (.223)	21.00 (.827)	19202-0049*	19202-0051*	33.00 (1.300)

\* Part has seamless barrel instead of butted seam.

PART NO.	INSULATION COLOR	WIRE SIZE	ID	L1 MAX	L2 MAX.	MWID
AS-N-345	RED	22-18	.059	1.035	.675	.130
BS-N-331	BLUE	16-14	.091	1.080	.675	.140
CS-N-346	YELLOW	12-10	.138	1.300	.827	.223

ⓑ

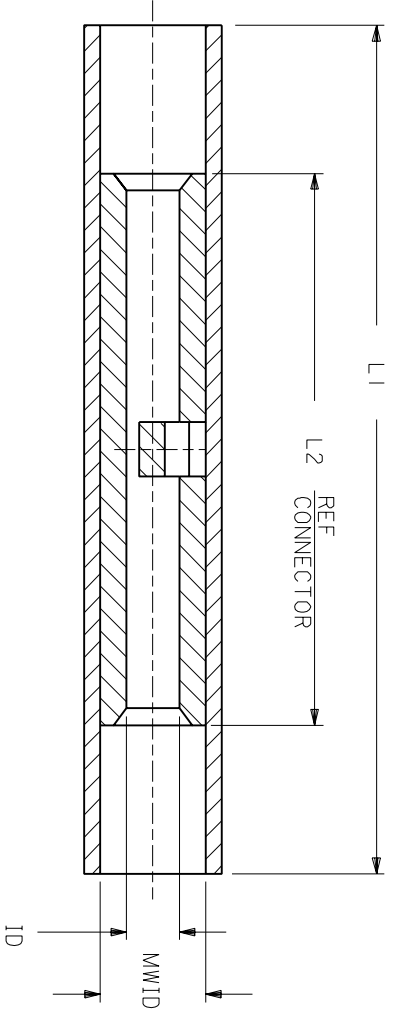
NOTES:  
 1. MATERIAL:  
 INSULATION: NYLON  
 CONNECTOR: TIN PLATED SEAMLESS COPPER  
 3. IF NECESSARY: SLIGHT FLARE ON ONE END  
 ACCEPTABLE FOR ASSEMBLY PURPOSES.



# CUSTOMER DRAWING

REVISED & REDRAWN EC NO: B DRWN: SHADECK 2005/06/13 CHKD: RDEROSS 2005/06/21 APPR: RDEROSS 2005/06/21	DESCRIPTION REV	QUALITY SYMBOLS ▽=0 ▽=0	GENERAL TOLERANCES (UNLESS SPECIFIED) <table border="1"> <thead> <tr> <th></th> <th>mm</th> <th>INCH</th> </tr> </thead> <tbody> <tr> <td>4 PLACES</td> <td>± ---</td> <td>± ---</td> </tr> <tr> <td>3 PLACES</td> <td>± ---</td> <td>± ---</td> </tr> <tr> <td>2 PLACES</td> <td>± ---</td> <td>± ---</td> </tr> <tr> <td>1 PLACE</td> <td>± ---</td> <td>± ---</td> </tr> </tbody> </table>		mm	INCH	4 PLACES	± ---	± ---	3 PLACES	± ---	± ---	2 PLACES	± ---	± ---	1 PLACE	± ---	± ---	DIMENSION STYLE IN/MM	SCALE 4:1	DESIGN UNITS INCH	THIRD ANGLE PROJECTION
			mm	INCH																		
		4 PLACES	± ---	± ---																		
		3 PLACES	± ---	± ---																		
2 PLACES	± ---	± ---																				
1 PLACE	± ---	± ---																				
DRAFT WHERE APPLICABLE MUST REMAIN WITHIN DIMENSIONS			DRAWN BY EMF	DATE 07/03/91	TITLE NYLAKRIMP BUTT CONNECTOR																	
			CHECKED BY JM	DATE 07/03/91																		
			APPROVED BY FP	DATE 07/03/91	MOLEX INCORPORATED																	
			MATERIAL NO. SEE TABLE	DOCUMENT NO. 60002-11C				SHEET NO. 1 OF 1														

PART NO.	INSULATION COLOR	WIRE SIZE	ID	L1 MAX	L2 MAX	MWID
AS-N-345	RED	22-18	.059	1.035	.675	.130
BS-N-331	BLUE	16-14	.091	1.080	.675	.160
CS-N-346	YELLOW	12-10	.138	1.300	.827	.223



NOTES:  
 1. MATERIAL:  
 INSULATION: NYLON  
 CONNECTOR: TIN PLATED SEAMLESS COPPER  
 3. IF NECESSARY: SLIGHT FLARE ON ONE END ACCEPTABLE FOR ASSEMBLY PURPOSES.

# CUSTOMER DRAWING

DIMENSIONS SHOWN (METRIC) INCH  
 UNLESS OTHERWISE SPECIFIED  
 TOLERANCES: ANGULAR = 1/2°

PLACE	INCH	METRIC
3 PLACE	± .005	± 0.13
2 PLACE	± .01	± 0.25
1 PLACE	± ---	± ---

DRAFT WHERE APPLICABLE MUST REMAIN WITHIN DIMENSIONS

DRWG. BY	EMF	CHK'D. BY	JM
APP'D. BY	FP	SCALE	NO: NE

DRWG. NO. 60002-11C

REVISE ONLY ON CAD SYSTEM

NYLAKRIMP BUTT CONNECTOR

molex **ETC INC.** PINELLAS PARK, FLA. 33781 U.S.A. SHEET NO. 1 OF 1 DATE 91/07/03

PART NO. 60002-11C

FILE NAME: SEE TABLE  
 THIS DRAWING CONTAINS INFORMATION THAT IS PROPRIETARY TO MOLEX-ETC INC. AND SHOULD NOT BE USED WITHOUT WRITTEN PERMISSION.  
 DRWG. NO. 60002-11C  
 DIV. ET  
 SIZE A

LTR.	REVISIONS
A	ADD P/N AND UPDATE DRAWINGS ET80539 12/18 HEB