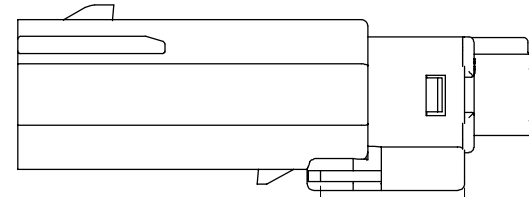
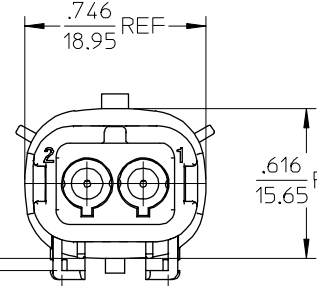


.230
5.84 REF



.591
15.00 REF

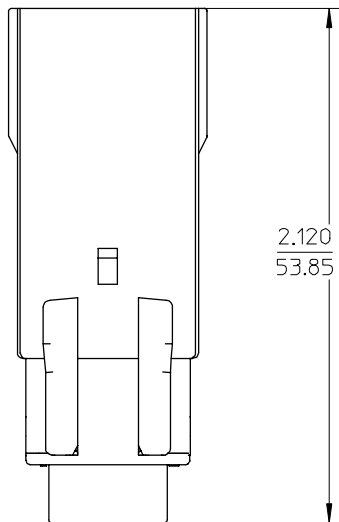


.746
18.95 REF

.616
15.65 REF

.048
1.23

.438
11.13 REF



2.120
53.85 REF

NOTES:

1. ASSEMBLY BULK PACKAGED PER PK-19417-001.
2. MOUNTING SLOT DIMENSIONS.
3. USE CONNECTOR WITH MALE CRIMP TERMINAL: SERIES 19417.

19419-0007	2	16-14
19419-0008	2	22-18
MATERIAL NUMBER	CIRCUIT SIZE	UL WIRE AWG

EC NO: ETC2003-0150 DRWN:BRUPERT 2002/12/16 CHKD:JPAWLIC 2002/12/17 APPR:RDEROSS 2002/12/17	QUALITY SYMBOLS	GENERAL TOLERANCES (UNLESS SPECIFIED)		SCALE 1:1	DESIGN UNITS INCH	THIRD ANGLE PROJECTION	REVISE ON CAD ONLY	
	DESCRIPTION ▽ = 0 ◁ = 0		mm	INCH	DIMENSION STYLE IN/MM		TITLE 2 WAY PLUG ASSEMBLY	
		4 PLACES	± ---	± ---	DRAWN BY B.RUPERT	DATE 12/05/02	MATERIAL NO. SEE CHART	
		3 PLACES	± ---	± .005	CHECKED BY J.PAWLIC	DATE 12/06/02	DOCUMENT NO. SD-19419-002	SHEET NO. 1 OF 1
	2 PLACES	± 0.13	± .01	APPROVED BY R.DEROSS DATE 12/06/02				
	1 PLACE	± 0.25	± ---	THIS DRAWING CONTAINS INFORMATION THAT IS PROPRIETARY TO MOLEX INCORPORATED AND SHOULD NOT BE USED WITHOUT WRITTEN PERMISSION				
	ANGULAR ± 1/2°		DRAFT WHERE APPLICABLE					
	MUST REMAIN WITHIN DIMENSIONS							