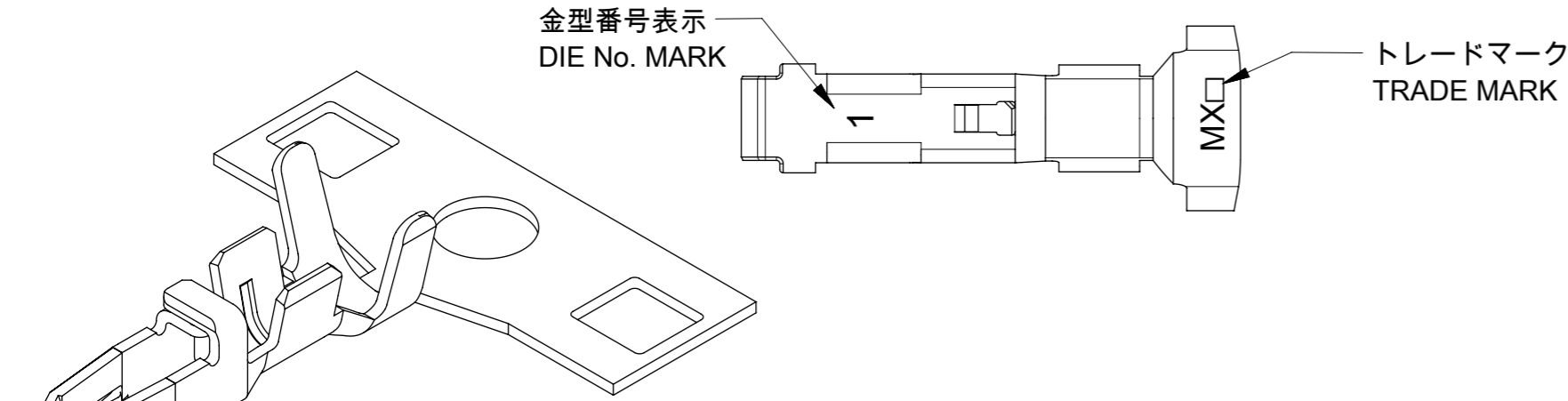
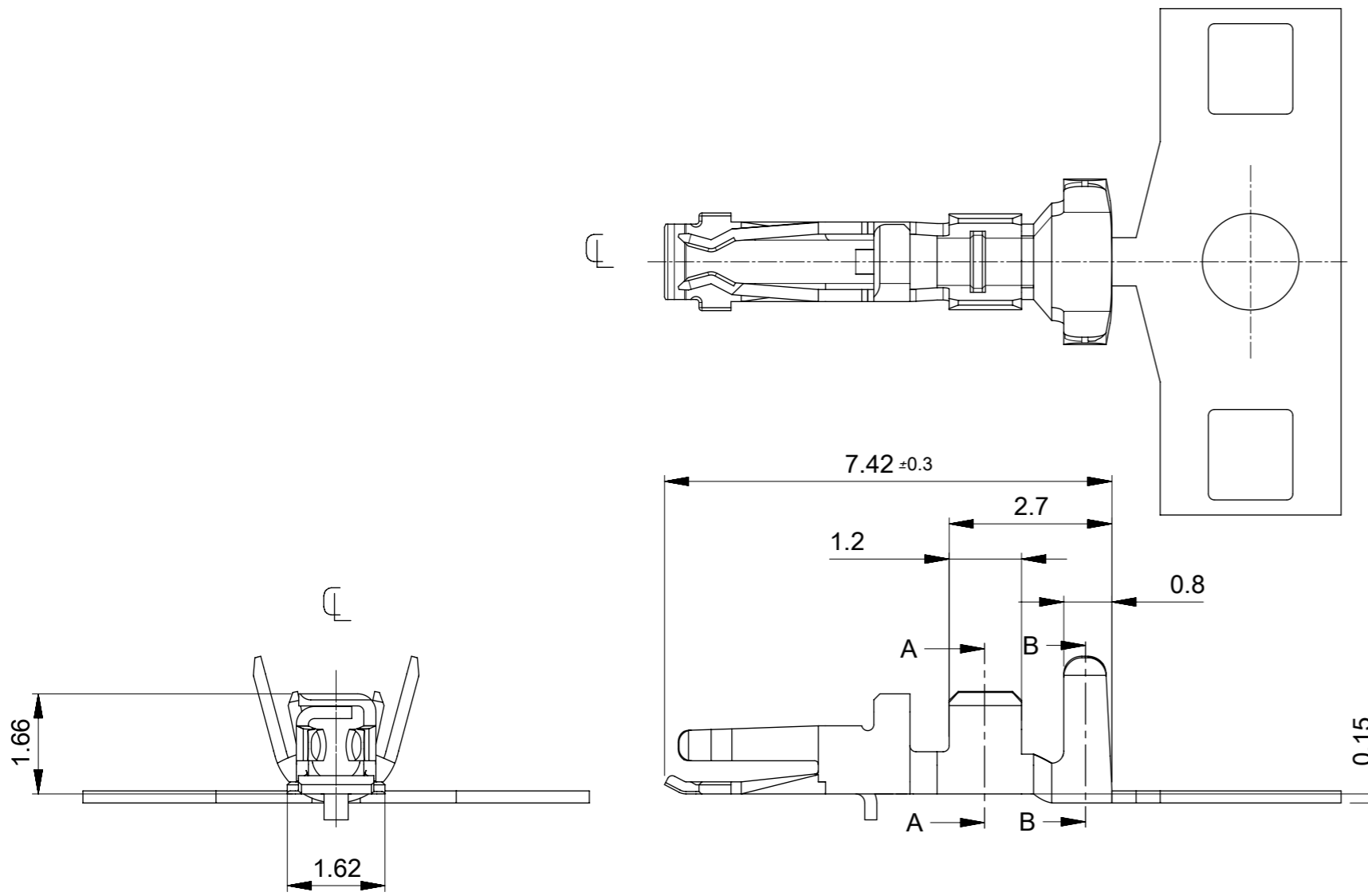


NOTE

- 1.適合ハウジング : 201196,201200シリーズ
APPCABLE HOUSING : 201196,201200SERIES.
- 2.圧着条件については、圧着仕様書(2011956000_PS_C00)を参照願います。
PLEASE REFER TO CRIMP SPECIFICATION (2011956000_PS_C00).
- 3.製品の取扱いについては、コネクタ取扱い説明書(2011960000_PS_A00)を参照願います。
PLEASE REFER TO INSTRUCTION MANUAL(2011960000_PS_A00).



201195 6000	連鎖状 CHAIN
オーダー番号 ORDER No.	端子形状 FORM

部品 PART	材質 MATERIAL
ターミナル TERMINAL	銅合金 錫めっき、リフロー処理(前めっき) : 0.7µm以上 COPPER ALLOY PRE-TIN PLATED(HEAT TREATED MATTE TIN): 0.7 micro-meter MIN.
適用電線範囲 WIRE RANGE	絶縁被覆外形 INSURATION RANGE
AWG:#22~#26	φ1.25 ~ φ1.6

QUALITY SYMBOLS		THIS DRAWING CONTAINS INFORMATION THAT IS PROPRIETARY TO MOLEX ELECTRONIC TECHNOLOGIES, LLC AND SHOULD NOT BE USED WITHOUT WRITTEN PERMISSION		DIMENSION UNITS		SCALE		 SPOT-ON 2.0 RECEPTACLE CRIMP TERMINAL PRODUCT CUSTOMER DRAWING						
▽A	= 0	EC NO: 119240 DRWN: MHAYASHI CHK'D: KOMURAKAMI APPR: TKANEKO	2017/07/07 2017/07/14 2017/07/24	GENERAL TOLERANCES (UNLESS SPECIFIED)		MM	10:1					DRWN BY		DATE
▽E	= 0			ANGULAR TOL ± 3.0 °		SNAKAMURA08						2016/11/29		
▽F	= 0			4 PLACES ± 0.2	CHK'D BY		DATE							
▽D	= 0			3 PLACES ± 0.2	KOMURAKAMI		2017/03/23							
▽	= 0	2 PLACES ± 0.2	APPR BY		DATE		TKANEKO		2017/03/24					
▽C	= 0	1 PLACE ± 0.2	DRAWING SIZE		THIRD ANGLE PROJECTION		SERIES		MATERIAL NUMBER		CUSTOMER			
▽	= 0	0 PLACES ± 0.2	A3				201195		SEE CHART					
▽	= 0	DRAFT WHERE APPLICABLE MUST REMAIN WITHIN DIMENSIONS		DOCUMENT NUMBER		DOC TYPE		DOC PART		SHEET NUMBER				
▽	= 0			2011956000		PSD		000		1 OF 1				