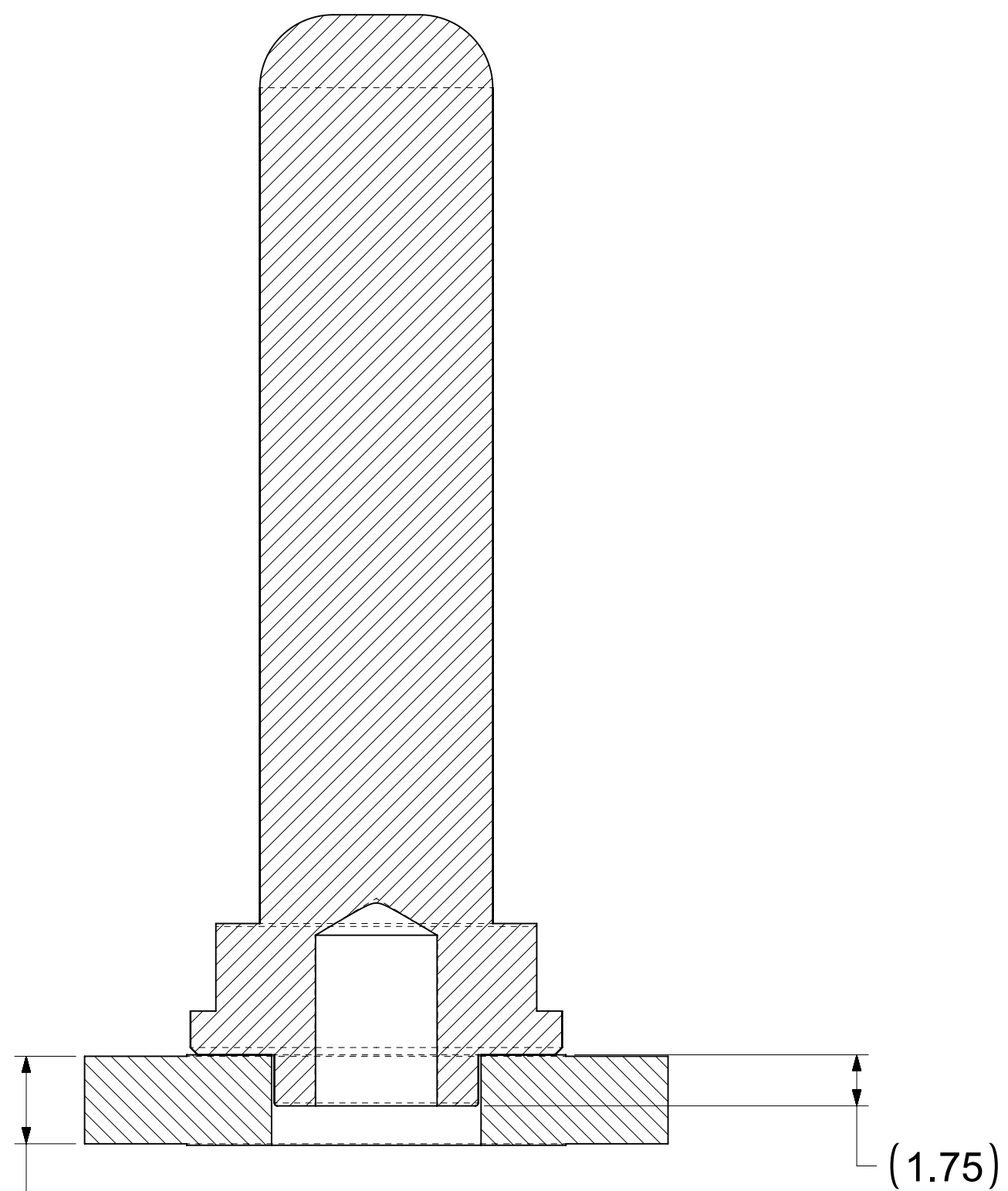
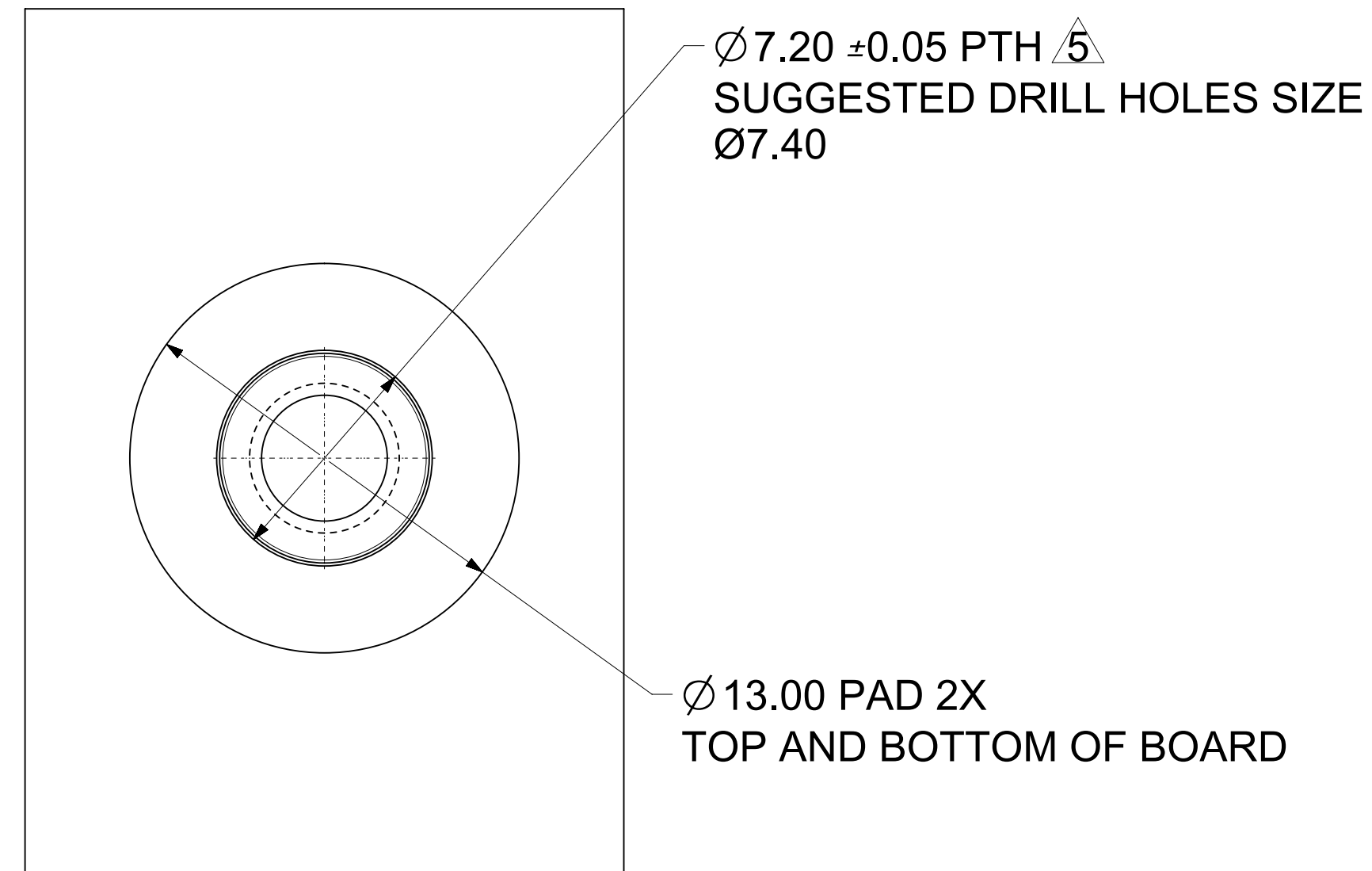


MINIMUM BOARD THICKNESS IS 2.00mm

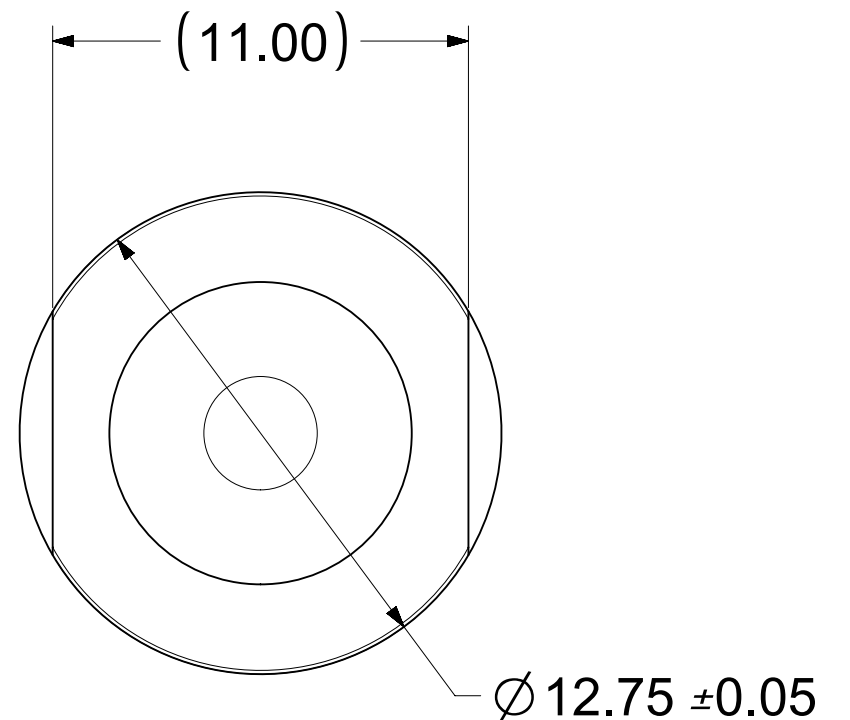


SECTION A-A

PART NUMBER	DIMENSION "L"
2032634085	45.65
2032634185	35.65
2032634285	20.65
2032634385	30.65
2032634485	29.15
2032634585	25.50
2032634685	43.65
2032634785	40.35
2032634885	16.65
2032634985	66.50



RECOMMENDED PCB LAYOUT



NOTES:

- MATERIALS:
BASE METAL: HIGH CONDUCTIVE COPPER ALLOY
PLATING ON BODY: 3.18 MICRON MIN SILVER OVER 1.27 MICRON MIN NICKEL
- PRODUCT SPECIFICATION: PS-204313-001
- APPLICATION SPECIFICATION: AS-204313-001
- PACKAGING SPECIFICATION: 2032630006-PK
- SILVER COMPONENTS WILL BE SUPPLIED TARNISH FREE BUT MAY TARNISH OVER TIME.
- PART TO BE MOUNTED WITH CONDUCTIVE M5x6mm SCREW AND CONDUCTIVE BELLEVILLE WASHER FOR OPTIMAL PERFORMANCE
- SCREW LENGTH TO BE DETERMINED BY CUSTOMER, SCREWS AND WASHERS ARE NOT SUPPLIED BY MOLEX.

THIS DRAWING CONTAINS INFORMATION THAT IS PROPRIETARY TO MOLEX ELECTRONIC TECHNOLOGIES, LLC AND SHOULD NOT BE USED WITHOUT WRITTEN PERMISSION			
DIMENSION UNITS mm	SCALE 5:1	CURRENT REV DESC: TYPO CORRECTION	
GENERAL TOLERANCES (UNLESS SPECIFIED)		<p>molex</p> <p>CST 8MM SCREW MOUNTED MALE TERMINAL</p> <p>PRODUCT CUSTOMER DRAWING</p>	
ANGULAR TOL	± 0.5°		
4 PLACES	±		
3 PLACES	±		
2 PLACES	± 0.2		
1 PLACE	± 0.25	EC NO: 624981 DRWN: JJONIAK 2019/09/19 CHK'D: BPISZCZOR 2019/10/03 APPR: BPISZCZOR 2019/10/03 INITIAL REVISION: DRWN: JJONIAK 2018/10/10 APPR: BPISZCZOR 2019/03/22	
0 PLACES	±	DOCUMENT NUMBER: 2032634185-SD DOC TYPE: PSD DOC PART: 000 REVISION: C	
DRAFT WHERE APPLICABLE MUST REMAIN WITHIN DIMENSIONS	THIRD ANGLE PROJECTION	DRAWING D-SIZE	SERIES 203263
		MATERIAL NUMBER SEE CHART	CUSTOMER GENERAL MARKET
		SHEET NUMBER 1 OF 1	