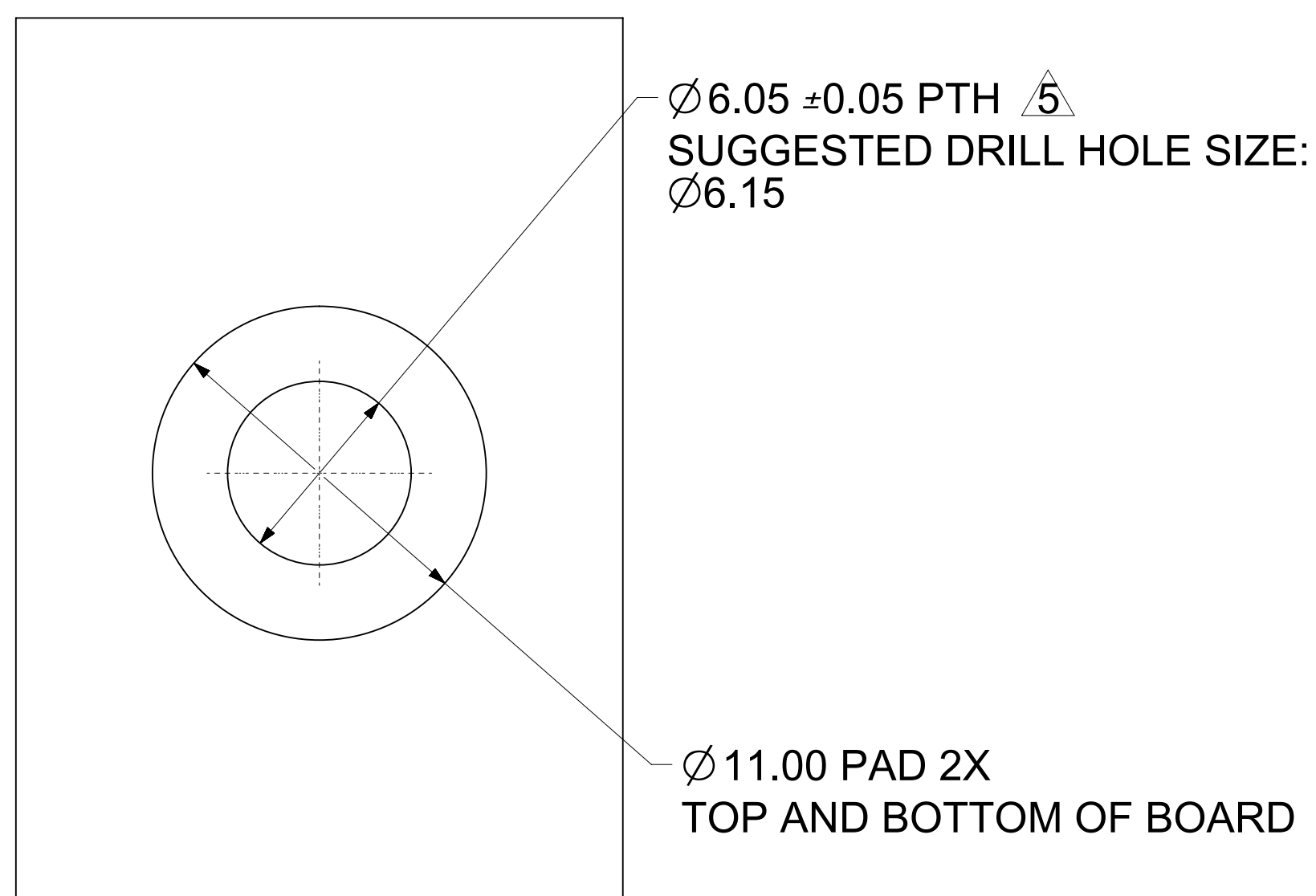
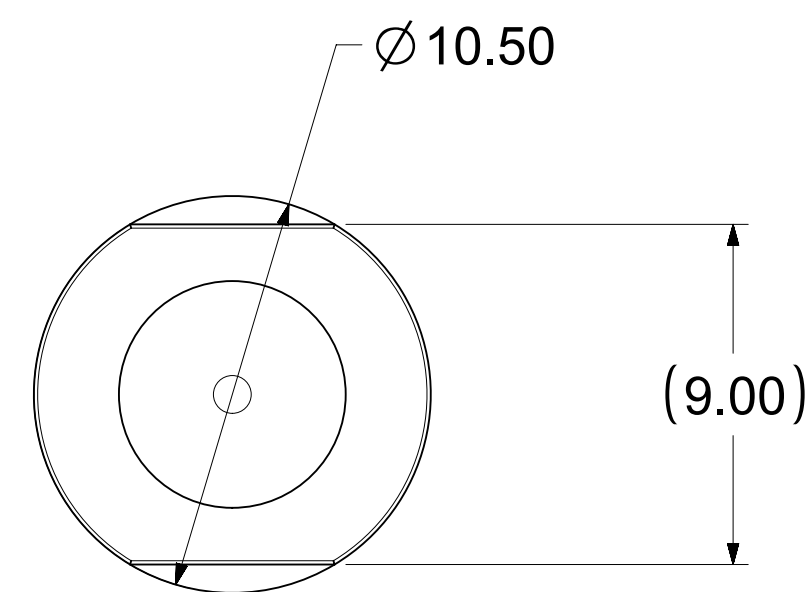


SECTION A-A



RECOMMENDED PCB LAYOUT



NOTES:

1. MATERIALS:
BASE METAL: HIGH CONDUCTIVE COPPER ALLOY
PLATING ON BODY: 3.18 MICRON MIN SILVER OVER 1.27 MICRON MIN NICKEL
2. PRODUCT SPECIFICATION: 2043130006-PS
3. APPLICATION SPECIFICATION: 2043130006-AS
4. PACKAGING SPECIFICATION: 2032630006-PK
5. SILVER COMPONENTS WILL BE SUPPLIED TARNISH FREE BUT MAY TARNISH OVER TIME.
6. PART MOUNTED WITH CONDUCTIVE M4 SCREW AND CONDUCTIVE BELLEVILLE WASHER FOR OPTIMAL PERFORMANCE
7. SCREW LENGTH TO BE DETERMINED BY CUSTOMER, SCREWS AND WASHERS ARE NOT SUPPLIED BY MOLEX.

PART NUMBER	DIMENSION "L"
2032636085	18.52
2032636185	25.52
2032636285	20.92
2032636385	30.92
2032636485	29.42
2032636585	23.77
2032636685	40.00
2032636785	51.52

THIS DRAWING CONTAINS INFORMATION THAT IS PROPRIETARY TO MOLEX ELECTRONIC TECHNOLOGIES, LLC AND SHOULD NOT BE USED WITHOUT WRITTEN PERMISSION									
DIMENSION UNITS mm	SCALE 5:1	CURRENT REV DESC: PLATING SPEC UPDATED			molex				
GENERAL TOLERANCES (UNLESS SPECIFIED)		EC NO: 623154							
ANGULAR TOL	± 0.5°	DRWN: RLOW 2019/08/14							
4 PLACES	±	CHK'D: BPISZCZOR 2019/09/04			PRODUCT CUSTOMER DRAWING				
3 PLACES	±	APPR: BPISZCZOR 2019/09/04							
2 PLACES	± 0.15	INITIAL REVISION:			DOCUMENT NUMBER 2032636185-SD				
1 PLACE	± 0.25	DRWN: JJONIAK 2018/10/10							
0 PLACES	±	APPR: BPISZCZOR 2019/03/22			DOC PART 000				
DRAFT WHERE APPLICABLE MUST REMAIN WITHIN DIMENSIONS		THIRD ANGLE PROJECTION	DRAWING	SERIES					
			D-SIZE	203263	MATERIAL NUMBER SEE CHART				
					SHEET NUMBER 1 OF 1				