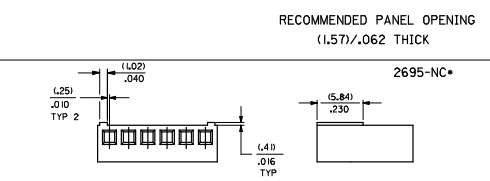
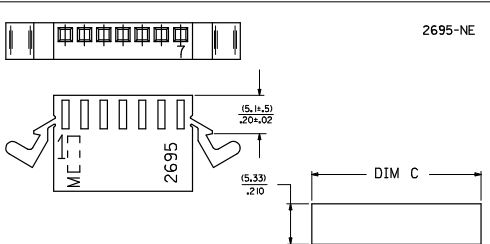
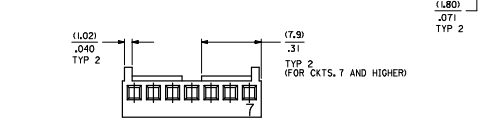
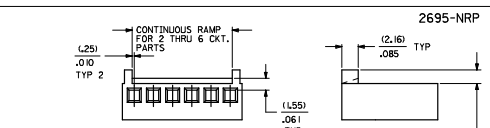
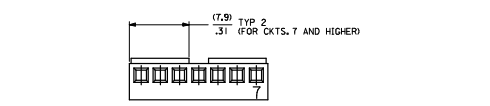
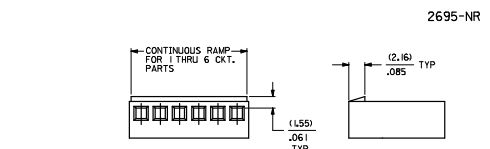
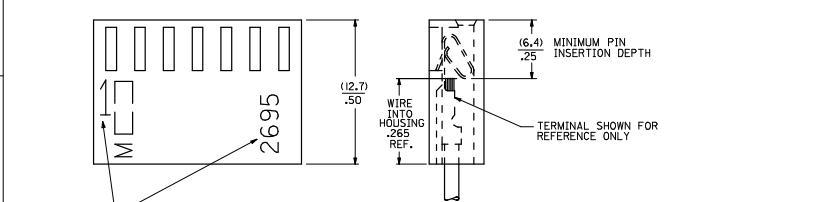
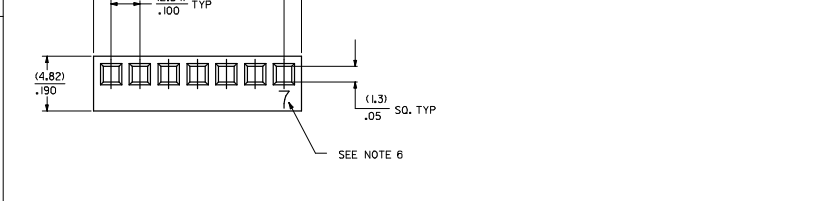


NO. OF CKT'S.	DIM. A	DIM. B	DIM. C
1	N/A	(3.10)	(7.18)
2	(2.54±.05)	.122	(9.70)
3	.100±.002	.222	(3.82)
4	(5.08±.05)	(8.18)	(12.24)
5	(7.62±.05)	.322	(4.82)
6	(3.00±.002)	.422	(14.78)
7	(10.16±.05)	(13.26)	(17.52)
8	.400±.002	.522	(6.82)
9	(12.70±.08)	(18.34)	(19.86)
10	.500±.003	.622	(4.78)
11	(15.24±.08)	(18.34)	(22.40)
12	.600±.003	.722	(8.82)
13	(17.78±.08)	(20.88)	(24.84)
14	.700±.003	.822	(9.82)
15	(20.32±.10)	(23.42)	(27.48)
16	.800±.004	.922	(10.82)
17	(22.86±.10)	(25.96)	(30.02)
18	.900±.004	1.022	(11.82)
19	(25.40±.10)	(28.50)	(32.56)
20	L000±.004	L122	L282
21	(27.94±.13)	(31.04)	(35.10)
22	L100±.005	L222	L382
23	(30.48±.15)	(33.58)	(37.64)
24	L200±.005	L322	L482
25	(33.02±.15)	(36.12)	(40.18)
26	L300±.005	L422	L582
27	(35.56±.15)	(38.66)	(42.72)
28	L400±.005	L522	L682
29	(38.10±.15)	(41.20)	(45.26)
30	L500±.006	L622	L782
31	(40.64±.15)	(43.74)	(47.80)
32	L600±.006	L722	L882
33	(43.18±.15)	(46.28)	(50.34)
34	L700±.006	L822	L982
35	(45.72±.15)	(48.82)	(52.88)
36	L800±.006	L922	L1082
37	(48.26±.15)	(51.36)	(55.42)
38	L900±.006	L1022	L1182
39	(50.80±.18)	(53.90)	(57.96)
40	2.000±.007	2.122	2.282
41	(53.34±.18)	(56.44)	(60.50)
42	2.100±.007	2.222	2.382
43	(55.88±.18)	(58.98)	(63.04)
44	2.200±.007	2.322	2.482
45	(58.42±.18)	(61.52)	(65.58)
46	2.300±.007	2.422	2.582
47	(60.96±.20)	(64.06)	(68.12)
48	2.400±.008	2.522	2.682
49	(63.50±.20)	(66.60)	(70.66)
50	2.500±.008	2.622	2.782
51	(66.04±.20)	(69.14)	(73.20)
52	2.600±.008	2.722	2.882
53	(68.58±.20)	(71.68)	(75.74)
54	2.700±.008	2.822	2.982
55	(71.12±.23)	(74.22)	(78.28)
56	2.800±.009	2.922	3.082
57	(73.66±.23)	(76.76)	(80.82)
58	2.900±.009	3.022	3.182
59	(76.20±.23)	(79.30)	(83.36)
60	3.000±.009	3.122	3.282
61	(78.74±.23)	(81.84)	(85.90)
62	3.100±.009	3.222	3.382
63	(81.28±.25)	(84.38)	(88.44)
64	3.200±.010	3.322	3.482
65	(83.82±.25)	(86.92)	(90.98)
66	3.300±.010	3.422	3.582
67	(86.36±.25)	(89.46)	(93.52)
68	3.400±.010	3.522	3.682
69	(88.90±.25)	(92.00)	(96.06)
70	3.500±.010	3.622	3.782
71	(91.44±.28)	(94.54)	(98.60)
72	3.600±.011	3.722	3.882
73	(93.98±.28)	(97.08)	(101.14)
74	3.700±.011	3.822	3.982
75	(96.52±.28)	(99.62)	(103.68)
76	3.800±.011	3.922	4.082
77	(99.06±.28)	(102.16)	(106.22)
78	3.900±.011	4.022	4.182



OPTION CODE	MOUNTING EARS	RAMP	POLARIZING RIBS	DYED	MAT'L	RETENTION PEG
BLANK	NO	NO	NO	NO	NO	NO
E	YES	NO	NO	NO	NOTE 1A	NO
R	NO	YES	NO	NO	NOTE 1A	NO
RP	NO	YES	YES	NO	NOTE 1A	NO
RPD	NO	YES	YES	YES	NOTE 1A	NO
C	NO	NO	NO	NO	NOTE 1A	YES
RP-BK	NO	YES	YES	NO	NOTE 1B	NO



- NOTES
- MATERIAL A - NYLON UL94V-0, COLOR WHITE  
B - NYLON UL94V-0, COLOR BLACK
  - FINISH SEE TERMINAL DRAWING
  - THIS HOUSING CONFORMS TO MOLEX PRODUCT SPECIFICATION PS-10-07.
  - PACKAGING N/A
  - HOUSING TO BE USED WITH CRIMP TYPE TERMINAL NUMBER 2759, 22-30 GAUGE WIRE WITH (1.57)±.062 DIAMETER MAXIMUM WIRE INSULATION.
  - LAST CIRCUIT NUMBER TO BE DESIGNATED ON 7 CKTS. AND HIGHER, EXCEPT WHEN 'N'X' APPEARS.
  - CIRCUIT NUMBER 'N' AND ENGINEERING NUMBER TO APPEAR ON PARTS 3 CKTS. AND HIGHER.

<p>REVISIONS</p> <table border="1"> <tr><td>3</td><td>AM3</td><td>REVISE CAVITY BOX</td></tr> <tr><td>2</td><td>AM3</td><td>REVISE CAVITY BOX</td></tr> <tr><td>1</td><td>AM4</td><td>REVISE CAVITY BOX</td></tr> <tr><td>SHT. REV.</td><td></td><td></td></tr> </table>	3	AM3	REVISE CAVITY BOX	2	AM3	REVISE CAVITY BOX	1	AM4	REVISE CAVITY BOX	SHT. REV.			<p>QUALITY SYMBOLS</p> <p>GENERAL TOLERANCES (UNLESS SPECIFIED)</p> <table border="1"> <tr><td>4 PLACES ±</td><td>-.005</td><td>INCH</td></tr> <tr><td>3 PLACES ±</td><td>-.010</td><td>INCH</td></tr> <tr><td>2 PLACES ±</td><td>-.015</td><td>INCH</td></tr> <tr><td>1 PLACE ±</td><td>-.020</td><td>INCH</td></tr> </table> <p>ANGULAR ±1/2°</p> <p>DRAFT WHERE APPLICABLE MUST REMAIN WITHIN DIMENSIONS</p>	4 PLACES ±	-.005	INCH	3 PLACES ±	-.010	INCH	2 PLACES ±	-.015	INCH	1 PLACE ±	-.020	INCH	<p>DIMENSION STYLE</p> <p>SCALE</p> <p>DESIGN UNITS</p> <p>THIRD ANGLE PROJECTION</p> <p>DRAWN BY PEREZ-ARGUET 1988/02/25</p> <p>CHECKED BY PATEL 1988/02/25</p> <p>APPROVED BY LENZ 1988/02/25</p> <p>MATERIAL NO. MOLEX INCORPORATED</p> <p>SEE CHART</p> <p>THIS DRAWING CONTAINS INFORMATION THAT IS PROPRIETARY TO MOLEX INCORPORATED AND SHOULD NOT BE USED WITHOUT WRITTEN PERMISSION</p>
3	AM3	REVISE CAVITY BOX																								
2	AM3	REVISE CAVITY BOX																								
1	AM4	REVISE CAVITY BOX																								
SHT. REV.																										
4 PLACES ±	-.005	INCH																								
3 PLACES ±	-.010	INCH																								
2 PLACES ±	-.015	INCH																								
1 PLACE ±	-.020	INCH																								

	2695-N			2695-NE			2695-NR			2695-NRP			2695-NRPD			2695-NRP-BK		
	PART NO.	ENG NO.	VOID	PART NO.	ENG NO.	VOID	PART NO.	ENG NO.	VOID	PART NO.	ENG NO.	VOID	PART NO.	ENG NO.	VOID	PART NO.	ENG NO.	VOID
M	22-01-2011	2695-1		22-01-2022	2695-2E		22-01-2027	2695-2R		N/A	2695-RR		N/A	2695-IRPD		50-29-1557	2695-2RP-BK	
	22-01-2021	2695-2		22-01-2032	2695-3E		22-01-2037	2695-3R		22-01-3027	2695-2RP		22-01-3037	2695-3RP		50-29-1558	2695-3RP-BK	
	22-01-2031	2695-3			2695-4E		22-01-2047	2695-4R		22-01-3047	2695-4RP			2695-4RPD		50-29-1559	2695-4RP-BK	
	22-01-2041	2695-4			2695-5E		22-01-2057	2695-5R		22-01-3057	2695-5RP		22-32-2051	2695-5RPD		50-29-1560	2695-5RP-BK	
L	22-01-2051	2695-5			2695-6E		22-01-2067	2695-6R		22-01-3067	2695-6RP			2695-6RPD		50-29-1561	2695-6RP-BK	
	22-01-2061	2695-6		22-01-2072	2695-7E		22-01-2077	2695-7R		22-01-3077	2695-7RP			2695-7RPD		50-29-1562	2695-7RP-BK	
	22-01-2071	2695-7			2695-8E		22-01-2087	2695-8R		22-01-3087	2695-8RP			2695-8RPD		50-29-1563	2695-8RP-BK	
	22-01-2081	2695-8			2695-9E		22-01-2097	2695-9R		22-01-3097	2695-9RP		22-32-2101	2695-9RPD		50-29-1564	2695-9RP-BK	
	22-01-2091	2695-9			2695-10E		22-01-2107	2695-10R		22-01-3107	2695-10RP			2695-10RPD		50-29-1565	2695-10RP-BK	
	22-01-2101	2695-10			2695-11E		22-01-2117	2695-11R		22-01-3117	2695-11RP			2695-11RPD		50-29-1566	2695-11RP-BK	
K	22-01-2111	2695-11			2695-12E		22-01-2127	2695-12R		22-01-3127	2695-12RP			2695-12RPD		50-29-1567	2695-12RP-BK	
	22-01-2121	2695-12			2695-13E		22-01-2137	2695-13R		22-01-3137	2695-13RP			2695-13RPD		50-29-1568	2695-13RP-BK	
	22-01-2131	2695-13			2695-14E		22-01-2147	2695-14R		22-01-3147	2695-14RP			2695-14RPD		50-29-1569	2695-14RP-BK	
	22-01-2141	2695-14			2695-15E		22-01-2157	2695-15R		22-01-3157	2695-15RP			2695-15RPD		50-29-1570	2695-15RP-BK	
	22-01-2151	2695-15			2695-16E		22-01-2167	2695-16R		22-01-3167	2695-16RP			2695-16RPD		50-29-1571	2695-16RP-BK	
	22-01-2161	2695-16			2695-17E		22-01-2177	2695-17R		22-01-3177	2695-17RP			2695-17RPD		50-29-1572	2695-17RP-BK	
	22-01-2171	2695-17			2695-18E		22-01-2187	2695-18R		22-01-3187	2695-18RP			2695-18RPD		50-29-1573	2695-18RP-BK	
	22-01-2181	2695-18			2695-19E		22-01-2197	2695-19R		22-01-3197	2695-19RP			2695-19RPD		50-29-1574	2695-19RP-BK	
	22-01-2191	2695-19			2695-20E		22-01-2207	2695-20R		22-01-3207	2695-20RP			2695-20RPD		50-29-1575	2695-20RP-BK	
J	22-01-2201	2695-20			2695-21E		22-01-2217	2695-21R		22-01-3217	2695-21RP			2695-21RPD		50-29-1576	2695-21RP-BK	
	22-01-2211	2695-21			2695-22E		22-01-2227	2695-22R		22-01-3227	2695-22RP			2695-22RPD		50-29-1577	2695-22RP-BK	
	22-01-2221	2695-22			2695-23E		22-01-2237	2695-23R		22-01-3237	2695-23RP			2695-23RPD		50-29-1578	2695-23RP-BK	
	22-01-2231	2695-23			2695-24E		22-01-2247	2695-24R		22-01-3247	2695-24RP			2695-24RPD		50-29-1579	2695-24RP-BK	
	22-01-2241	2695-24			2695-25E		22-01-2257	2695-25R		22-01-3257	2695-25RP			2695-25RPD		50-29-1580	2695-25RP-BK	
I	22-01-2251	2695-25			2695-26E		22-01-2267	2695-26R		22-01-3267	2695-26RP			2695-26RPD		50-29-1581	2695-26RP-BK	
	22-01-2261	2695-26			2695-27E		22-01-2277	2695-27R		22-01-3277	2695-27RP			2695-27RPD		50-29-1582	2695-27RP-BK	
	22-01-2271	2695-27			2695-28E		22-01-2287	2695-28R		22-01-3287	2695-28RP			2695-28RPD		50-29-1583	2695-28RP-BK	
	22-01-2281	2695-28			2695-29E		22-01-2297	2695-29R			2695-29RP			2695-29RPD				
	22-01-2291	2695-29			2695-30E			2695-30R			2695-30RP			2695-30RPD				
	22-01-2301	2695-30			2695-31E			2695-31R			2695-31RP			2695-31RPD				
	22-01-2311	2695-31			2695-32E			2695-32R			2695-32RP			2695-32RPD				
	22-01-2321	2695-32			2695-33E		22-01-2337	2695-33R			2695-33RP			2695-33RPD				
	22-01-2331	2695-33			2695-34E			2695-34R			2695-34RP			2695-34RPD				
	22-01-2341	2695-34			2695-35E			2695-35R			2695-35RP			2695-35RPD				
	22-01-2351	2695-35			2695-36E			2695-36R			2695-36RP			2695-36RPD				
	22-01-2361	2695-36			2695-37E			2695-37R			2695-37RP			2695-37RPD				
	22-01-2371	2695-37			2695-38E			2695-38R			2695-38RP			2695-38RPD				
	22-01-2381	2695-38			2695-39E			2695-39R			2695-39RP			2695-39RPD				
	22-01-2391	2695-39			2695-40E			2695-40R			2695-40RP			2695-40RPD				
	22-01-2401	2695-40					22-01-2062	2695-06R-5	5	22-01-5102	2695-IORP-2	2						
										22-01-5044	2695-4RP-3	3						
										22-01-5103	2695-IORP-5	5						
										22-01-5111	2695-IORP-5	5						
										22-01-5104	2695-IORP-9	9						

ADD. P/IN 22-01-2032 EC. NO. LCP2006-1024 2005/11/02 2007/11/02 LAMCHOLSCHMIDT LCP2006-1024 2007/11/02 AM	QUALITY SYMBOLS 	GENERAL TOLERANCES (UNLESS SPECIFIED) mm ±--- ±--- INCH ±--- ±--- ANGULAR ±1/2° ±---	DIMENSION STYLE MM/IN	SCALE ---	DESIGN UNITS INCH	THIRD ANGLE PROJECTION 
		DRAWN BY PEREZ-ARGUET CHECKED BY PATEL APPROVED BY LENZ DATE 1988/02/25 DATE 1988/02/25 DATE 1988/02/25	TITLE (2.54)/.100 HOUSING FOR KK CRIMP TYPE TERMINALS 2695 SERIES DRAWING	MATERIAL NO. SD-2695 DOCUMENT NO. SD-2695	SHEET NO. 2 OF 3	

DRAFT WHERE APPLICABLE MUST REMAIN WITHIN DIMENSIONS  
 THIS DRAWING CONTAINS INFORMATION THAT IS PROPRIETARY TO MOLEX INCORPORATED AND SHOULD NOT BE USED WITHOUT WRITTEN PERMISSION

2695-NC*																	
PART NO.	ENG. NO.	VOIDS	PART NO.	ENG. NO.	VOIDS	PART NO.	ENG. NO.	VOIDS	PART NO.	ENG. NO.	VOIDS	PART NO.	ENG. NO.	VOIDS	PART NO.	ENG. NO.	VOIDS
N/A																	
	2695-1C																
	2695-2C																
	2695-3C																
	2695-4C																
	2695-5C																
	2695-6C																
	2695-7C																
	2695-8C																
	2695-9C																
	2695-10C																
	2695-11C																
	2695-12C																
	2695-13C																
	2695-14C																
	2695-15C																
	2695-16C																
	2695-17C																
	2695-18C																
	2695-19C																
	2695-20C																
	2695-21C																
	2695-22C																
	2695-23C																
	2695-24C																
	2695-25C																
	2695-26C																
	2695-27C																
	2695-28C																
	2695-29C																
	2695-30C																
	2695-31C																
	2695-32C																
	2695-33C																
	2695-34C																
	2695-35C																
	2695-36C																
	2695-37C																
	2695-38C																
	2695-39C																
	2695-40C																

UPDATE TITLE BLOCK REC. NO. LCP2006-1024 2005/11/01 DRAWN BY AM LCP2006-1024 2005/11/01 CHECKED BY AM LCP2006-1024 2005/11/01 APPROVED BY AM LCP2006-1024 2005/11/01	QUALITY SYMBOLS 	GENERAL TOLERANCES (UNLESS SPECIFIED) <table border="1"> <tr><th></th><th>mm</th><th>INCH</th></tr> <tr><td>4 PLACES</td><td>±.0125</td><td>±.0005</td></tr> <tr><td>3 PLACES</td><td>±.0150</td><td>±.0006</td></tr> <tr><td>2 PLACES</td><td>±.0175</td><td>±.0007</td></tr> <tr><td>1 PLACE</td><td>±.0200</td><td>±.0008</td></tr> </table>		mm	INCH	4 PLACES	±.0125	±.0005	3 PLACES	±.0150	±.0006	2 PLACES	±.0175	±.0007	1 PLACE	±.0200	±.0008	DIMENSION STYLE MM/IN DRAWN BY DATE SAM IEC 1989/10/30 CHECKED BY DATE PATEL 1989/10/30 APPROVED BY DATE LENZ 1989/10/30	SCALE --- DESIGN UNITS INCH THIRD ANGLE PROJECTION 	TITLE (2.54)/.100 HOUSING FOR KK CRIMP TYPE TERMINALS 2695 SERIES DRAWING MOLEX INCORPORATED MATERIAL NO. LCP2006-1024 DOCUMENT NO. SD-2695 SHEET NO. 3 OF 3
		mm	INCH																	
	4 PLACES	±.0125	±.0005																	
	3 PLACES	±.0150	±.0006																	
2 PLACES	±.0175	±.0007																		
1 PLACE	±.0200	±.0008																		
DRAFT WHERE APPLICABLE MUST REMAIN WITHIN DIMENSIONS		SEE CHART THIS DRAWING CONTAINS INFORMATION THAT IS PROPRIETARY TO MOLEX INCORPORATED AND SHOULD NOT BE USED WITHOUT WRITTEN PERMISSION																		