

E

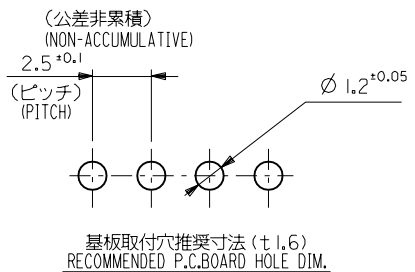
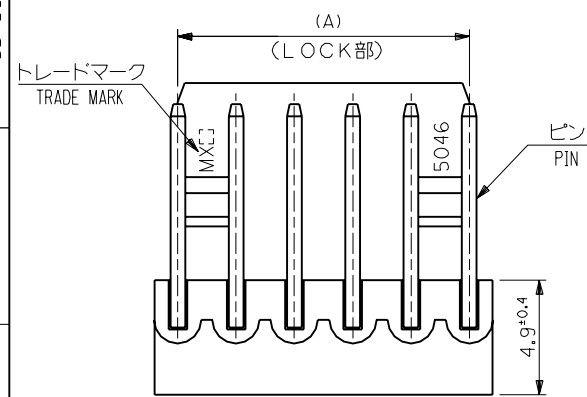
D

C

B

A

MM DIMENSIONS IN METRIC DO NOT SCALE DRAWING

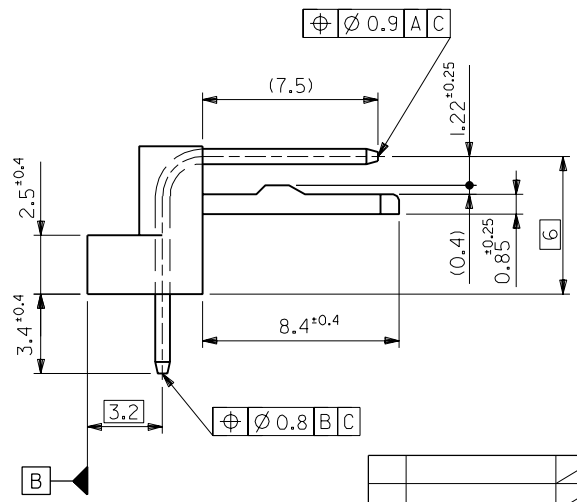
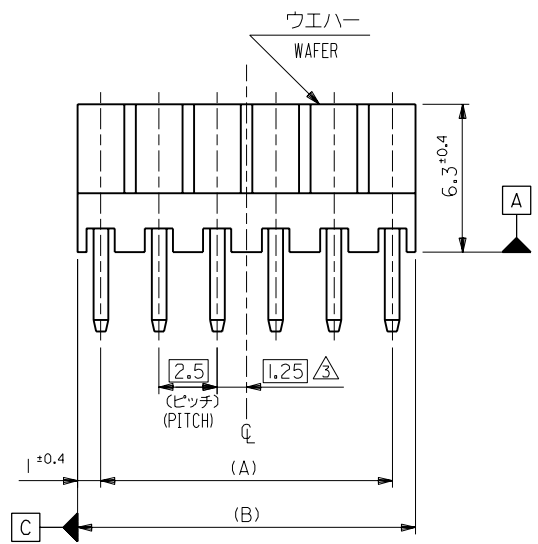


注記 NOTES :

- それは長さ25.4に対して0.2MAX. CAMBER MUST BE WITHIN 0.2MAX. PER 25.4 .
- 材料 (MATERIAL)
 ウエハー : 66ナイロン, UL94V-0
 WAFER: 66NYLON, UL94V-0
 ピン : φ0.635 黄銅, 銅下地錫メッキ
 PIN: φ0.635 BRASS, TIN OVER COPPER PLATING.

△ 全極数が偶数の場合のみ適用。 APPLY FOR EVEN CIRCUITS PRODUCT ONLY.

| | | | | |
|------|------|------------|----------|------------|
| 49.5 | 47.5 | 22-05-1202 | 5046-20A | 20 |
| 47 | 45 | -1192 | -19A | 19 |
| 44.5 | 42.5 | -1182 | -18A | 18 |
| 42 | 40 | -1172 | -17A | 17 |
| 39.5 | 37.5 | -1162 | -16A | 16 |
| 37 | 35 | -1152 | -15A | 15 |
| 34.5 | 32.5 | -1142 | -14A | 14 |
| 32 | 30 | -1132 | -13A | 13 |
| 29.5 | 27.5 | -1122 | -12A | 12 |
| 27 | 25 | -1112 | -11A | 11 |
| 24.5 | 22.5 | -1102 | -10A | 10 |
| 22 | 20 | -1092 | -09A | 9 |
| 19.5 | 17.5 | -1082 | -08A | 8 |
| 17 | 15 | -1072 | -07A | 7 |
| 14.5 | 12.5 | -1062 | -06A | 6 |
| 12 | 10 | -1052 | -05A | 5 |
| 9.5 | 7.5 | -1042 | -04A | 4 |
| 7 | 5 | -1032 | -03A | 3 |
| 4.5 | 2.5 | 22-05-1022 | 5046-02A | 2 |
| (B) | (A) | EDP NO. | ENG.NO. | 極数 CKT. |



| | | | | | |
|-------------------------|-------|--------|----------------------------------|----------|---------|
| 角度 ANGLE | ±3° | | | | |
| 30以上 OVER | +0.3 | | | | |
| 10以上 30未満 OVER UNDER | +0.25 | H | 変更 REVISD (40895) | N.S | H.H |
| 10未満 UNDER | +0.2 | G | 変更及び再作図 REVISD & REDRAWN (20018) | Y.M | H.H |
| 一般公差 GENERAL TOLERANCES | | 記号 LTR | 変更内容 REVISION RECORD | DR. DATE | 日付 DATE |

| | |
|------------------------------|-------------------------------|
| 材料 MATERIAL | 注記参照 SEE NOTE |
| 仕上げ FINISH | --- |
| 適用電線範囲 WIRE RANGE | --- |
| 被覆外径 INS. RANGE | --- |
| DRAWN BY '92/1/3 Y.MIZUNO | CHK'D BY '94/1/1 Y.M.HIRAMOTO |
| APP'D BY '94/1/1 M.FUKUSHIMA | 尺度 SCALE 5 : 1 |

MOLEX-JAPAN CO.,LTD.
 日本モレックス株式会社

REVISE ONLY ON CAD SYSTEM

TITLE 名称
 KK2.5 RIGHT ANGLE
 WAFER ASS'Y

DWG. NO. SD-5046-NA

REV H